

Product datasheet for **VC100907**

UL42 (NC_001798) Virus Tagged ORF Clone

Product data:

Product Type:	Expression Plasmids
Product Name:	UL42 (NC_001798) Virus Tagged ORF Clone
Tag:	Myc-DDK
Symbol:	UL42
Mammalian Cell Selection:	Neomycin
Vector:	pCMV6-Entry (PS100001)
E. coli Selection:	Kanamycin (25 ug/mL)



[View online »](#)

ORF Nucleotide Sequence:

>The Viral ORF clone VC100907 represents NCBI reference of NP_044512 with codon optimized for human cell expression
 Red=Cloning site Blue=ORF Green=Tags(s)

GACGTTGTATACGACTCCTATAGGGCGGCCGGAATTCGTCGACTGGATCCGGTACCGAGGAGATCTGCC
 GCC**CGGATCGCC**

ATGGCTCACTTGCCCGGGGGCCGCTGCAGCCCACTGTCTGAAGACGGATCCCTAGCCCCCGGAAC
 GCACCGAGGACTGGCCTCCTTGTGATCGTTCTGCAGGGCGCTGAGCTTAATGGAATACTGCAAGCCTT
 CGCACCCCTCAGGACTAGCCTCCTGGATAGTTTGTCTTGTGGTGGCGATAGGGGCATCCTGGTTCACAAC
 GCGATCTTCGGAGAACAGGTCTTTTTGCCACTGGATCATTCTCAATTTTCACGCTACAGGTGGGAGGTC
 CAACAGCTGCTTTCTGAGTCTCGTAGATCAGAAGCGGAGCCTGTTGTCCGTGTTTCGGGCAATCAGTA
 TCCCGACCTGAGGCGGTTGAAGTACCCTGACAGGGCAGGCACCCTCAGAACATTGGTCCAGCGCATC
 TGGACTACAGCAAGTATGGAGAGGCCGTGGAGCTTGCCTCCGAACTCTGATGAAACGGAACTACTA
 GCTTTGCTGTTTTGCTTCCCGAGGGGACCCAGACGTGCAACTGAGACTCACAAAACCTCAGCTGACCAA
 GGTCTGCAACGCGGTGGGCGATGAGACTGCCAAGCCACTACGTTTGTAGCTCGGCCCAATGAAAGTTC
 AGCGTTTTTAATGCTCGCACATGCGTTACTTTCCGAGCTCGGGAAGAAGGGGCCAGTAGCTCAACATCTG
 CGCAGGTCAGATCCTCACCTCAGCCTTGAAGAAGGCTGGCCAGGCGGCCCAACGCCAAAACCGTGTG
 TGGCGAAAACACCACCGAACCTTCTCCGTGGTTGTGGACGATTGTTCTATGAGAGCGGTTCTGCGGCGG
 CTGCAGGTGGGAGGCGGTACCCTCAAGTCTTCTCACCAGCGATGTGCCATCCGTCTGCGTCACTGCCA
 CAGGACCGAATGCGGTTTCCGCCGTGTTCTGCTCAAGCCTCAACGAGTGTGCCTGAATTGGCTCGGGAG
 GTCTCCCGGTTCTAGCACAGGATCACTTGCCTCACAGGACTCTCGCGCAGGCCCTACCGATAGCCAAGT
 AGCTCAAGTGAAGCCGACGCGCGGATCGGGGCGCTCCAGAAGAGGAAGGCTTGAAGGTCAAGCTCGGG
 TACCCCGGCCTTCCAGAACCGCCGCAAAAAGCAGAACATCCAGGCGCCGAGGTTGTACCCGCCGA
 TGACGCCACAAAACGACCAAAAACCGGAGTGCCCGCAGCTCCGACTCGGGCTGAGAGTCTCCCTTGTG
 GCCAGGTACGGACCCGAAGCCGCTGAGGGAGGCGGCGATGGGGGACGATATGCATGTTATTTAGAGACC
 TCCAGACAGGAGATGCCAGCCCTTCTCCTGAGTGCCTTCCAGAGGCCCAACGCGCCCTACGGTTT
 TGGCCTGCC

ACGCGTACGCGGCGGCTCGAGCAGAACTCATCTCAGAAGAGGATCTGGCAGCAATGATATCTGGATT
 ACAAGGATGACGACGATAAGGTTTAA

Protein Sequence:

>VC100907 representing NP_044512
 Red=Cloning sites Green=Tags

MAHLPGGAAAAPLSEDAIPSPRERTEDWPPCQIVLQGAELNGILQAFAPLRTSLLDSELLVVGDRGILVHN
 AIFGEQVFLPLDHSQFSRYRWGGPTAAFLSLVDQKRSLLSVFRANQYPDLRRVELTVTQAPFRTLQVRI
 WTTASDGEAVELASETLMKRELTSFAVLLPQGDPDVQLRLTKPQLTKVVNAVGDETAKPTTFELGPNKGF
 SVFNARTCVTFAAREEGASSSTSAQVQILTSALKKAGQAAANAKTVYGENTHRTFSVVVDDCSMRAVLR
 LQVGGGTLKFFLTADVPSVCVTATGPNVAVFLLKQVCLNWLGRSPGSSTGSLASQDSRAGPTDSQD
 SSSEPDAGDRGAPPEEEGLEQARVPPAFPEPPGTRRRHPGAEVVPADDATKRPKTGVPAAPTRAESPPLS
 ARYGPEAAEGGDGGRYACYFRDLQTDASPSLSAFRGPQRPYPYGFGLP

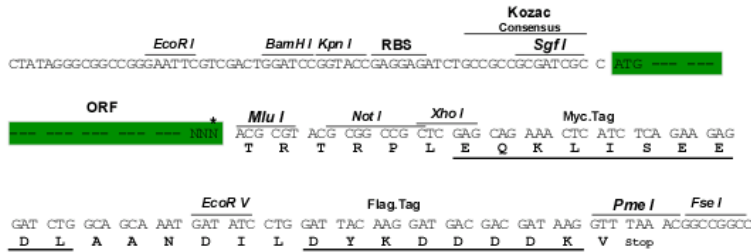
TRTRRLEQKLISEEDLAANDILDYKDDDDKV

Restriction Sites:

Sgfl-MluI

Cloning Scheme:

Cloning sites used for ORF Shuttling:



* The last codon before the Stop codon of the ORF

ACCN: NC_001798

ORF Size: 1410 bp

OTI Disclaimer: The molecular sequence of this clone can be viewed by clicking the "ORF Nucleotide Sequence" link above. This sequence represents the NCBI reference after codon optimization for human cell expression, and retaining the same decoded protein sequence. The stop codon in the native sequence was removed to create the in-frame c-terminal fusion with a Myc-DDK tag.

Components: The ORF clone is ion-exchange column purified and shipped in a 2D barcoded Matrix tube containing 10ug of transfection-ready, dried plasmid DNA (reconstitute with 100 ul of water).

Reconstitution Method:

1. Centrifuge at 5,000xg for 5min.
2. Carefully open the tube and add 100ul of sterile water to dissolve the DNA.
3. Close the tube and incubate for 10 minutes at room temperature.
4. Briefly vortex the tube and then do a quick spin (less than 5000xg) to concentrate the liquid at the bottom.
5. Store the suspended plasmid at -20°C. The DNA is stable for at least one year from date of shipping when stored at -20°C.

RefSeq: [NC_001798.1](#), [NP_044512](#)
RefSeq ORF: 1410 bp

Locus ID: 1487329

MW: 49.9 kDa