

Product datasheet for **VC100906**

UL41 (NC_001798) Virus Tagged ORF Clone

Product data:

Product Type:	Expression Plasmids
Product Name:	UL41 (NC_001798) Virus Tagged ORF Clone
Tag:	Myc-DDK
Symbol:	UL41
Mammalian Cell Selection:	Neomycin
Vector:	pCMV6-Entry (PS100001)
E. coli Selection:	Kanamycin (25 ug/mL)



[View online »](#)

ORF Nucleotide Sequence:

>The Viral ORF clone VC100906 represents NCBI reference of NP_044511 with codon optimized for human cell expression

Red=Cloning site Blue=ORF Green=Tags(s)

GACGTTGTATACGACTCCTATAGGGCGGCCGGAATTCGTCGACTGGATCCGGTACCGAGGAGATCTGCC
GCC**CGATCGCC**

ATGGGTCTGTTTGGCATGATGAAATTTGCCAGACGCACCATCTTGTTAAACGGCGGGCCCTGCGAGCAC
CAGAGGGCTACTTCACACCAATAGCAGTCGATCTGTGGAACGTTATGTACACACTTGTGGTTAAATATCA
GCGGAGGTATCCTTCTTACGATCGCGAGGCAATAACCCTGCACTGCCTCTGTTCTATGCTTAGGGTCTTT
ACTCAAAGTCACCTTTTCCAATATTTGTCAGTATCGCGGGTTCGAGTGCACAGAACCCGTGGTGTTCG
GTGCAAAGCAATCCTGGCTCGCACTACGGCACAATGCAGGACGGACGAGGAGGCATCTGATGTTGACGC
CTCACCTCACCCAGTCTATCACAGATAGTAGGCCCTCTTTGCTTTCAGCAACATGAGAAGACGCGGG
CATGCTTTCGCCCCAGGCGACCGCGGGACTAGAGCAGCAGGCCCGGCCAGCTGCACCTCTGGCGCTC
CTTCTAAACCAGCCCTGAGGTTGGCCACCTTTTCTGCATCAGAGTGTGCGCGCTCTGGGATACGCTA
TATTAACCTCTGGACAACCTGGAGGAGATGATGCTTGCCTAATCTGTATCATACTAATACAGTCCGATAC
GTGCATACGACCGATACAGATCTGCTCCTTATGGGATGCGATATTGTAATGATATCAACAGGGTATA
TTCCCACTATCCACTGCCGCGACCTGCTGCAGTACTTCAAGATGTCTTACCCCGAGTTCTTGGCCCTGTT
CGTGAGATGTCATACTGACCTGCACCCTAATAACCTATGCCTCTGTGGAAGATGTGCTCCGCGAGTGC
CACTGGACCGCCCCAAGCAGAAGTCAAGCACGGAGGGCCCGCCGGAGAGAACCGCAAACCTACGGTCTC
TGGAAAGCATGCCGACTCTGACTGCCGCTCCTGTGGGCTGGAGACTAGGATCTCTTGGACTGAGATCCT
TGCACAGCAAATAGCCGGGGAGGACGATTATGAGGAGGATCCCCCTCTGCAACCACCGGACGTCCGAGGA
GGCCCCAAGAGATGGCGCGAGAAGCAGTTCTTCCGAAATTTACCCCCAGAACTTGTGCAGGTGCCAA
ATGCCCCAGAGAGTTGCCGAACACAGGGGATACGTTGCCGGAAGAAGGCGGCACGTATCCATGATGCCCC
TGAAGCACTGGACTGGCTGCCTGACCCTATGACGATCGCCGAGCTGTAGAACATCGATATGCAAATAC
GTGATATCACTGATTTACCAAAGGAGCGCGGACCATGGACGCTGCTGAAGAGGTTGCCAATCTACCAGG
ACCTCCGGGATGAAGATCTCGCCGAAGTATCGTAACTCGGCACATCACAGCTCCCGACATCGCTGACCG
ATTTTTGGCACAACCTGTGGGCACACGCTCCACCCCGAGCTTCTATAAGGATGTCTTGGCCAAGTTCTGG
GATGAG

ACGCGTACGCGGCCGCTCGAGCAGAAACTCATCTCAGAAGAGGATCTGGCAGCAAATGATATCCTGGATT
ACAAGGATGACGACGATAAGGTTTAA

Protein Sequence:

>VC100906 representing NP_044511

Red=Cloning sites Green=Tags

MGLFGMMKFAQTHHLVRRRLRAPEGYFTPIAVDLWNVMYTLVVKYQRRYPSYDREAITLHCLCSMLRVF
TQKSLFPIFVTDGVECTEPVVFCAKAILARTTAQCRTDEEASDVASPPSPITDSRPSFAFSNMRRRG
HAFAPGDRGTRAAGPGAAPSGAPSKPALRLAHLFCIRVLRALGYAYINSQLEADDACANLYHTNTVAY
VHTTDTDLLMGCDIVLDISTGYIPTIHCARDLLQYFKMSYPQFLALFVRCHDLHPNNTYASVEDVLR
HWTAPSRSQARRAARRERANSRLESMPPLTAAPVGLETRISWTEILAQQIAGEDDYEDPPLQPPDVAG
GPRDGARSSSEILTPPELVQVPNAQRVAEHRGYVAGRRRHVIHDAPEALDWLPDPMTIAELVEHRYVKY
VISLISPKEGPWTLKRLPIYQDLRDEDLARSIVTRHITAPDIADRFLAQLWAHAPPPAFYKDVLAKEFW
DE

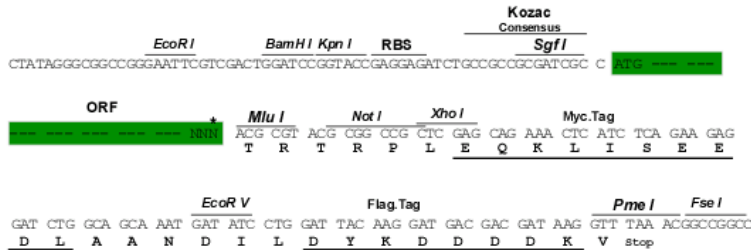
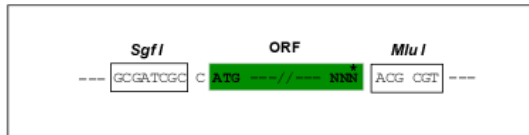
TRTRRLEQKLISEEDLAANDILDYKDDDDKV

Restriction Sites:

Sgfl-MluI

Cloning Scheme:

Cloning sites used for ORF Shuttling:



* The last codon before the Stop codon of the ORF

ACCN: NC_001798

ORF Size: 1476 bp

OTI Disclaimer: The molecular sequence of this clone can be viewed by clicking the "ORF Nucleotide Sequence" link above. This sequence represents the NCBI reference after codon optimization for human cell expression, and retaining the same decoded protein sequence. The stop codon in the native sequence was removed to create the in-frame c-terminal fusion with a Myc-DDK tag.

Components: The ORF clone is ion-exchange column purified and shipped in a 2D barcoded Matrix tube containing 10ug of transfection-ready, dried plasmid DNA (reconstitute with 100 ul of water).

Reconstitution Method:

1. Centrifuge at 5,000xg for 5min.
2. Carefully open the tube and add 100ul of sterile water to dissolve the DNA.
3. Close the tube and incubate for 10 minutes at room temperature.
4. Briefly vortex the tube and then do a quick spin (less than 5000xg) to concentrate the liquid at the bottom.
5. Store the suspended plasmid at -20°C. The DNA is stable for at least one year from date of shipping when stored at -20°C.

RefSeq: [NC_001798.1, NP_044511](#)
RefSeq ORF: 1476 bp

Locus ID: 1487328

MW: 55.2 kDa