

## Product datasheet for **VC100889**

### UL25 (NC\_001798) Virus Tagged ORF Clone

#### Product data:

Product Type:	Expression Plasmids
Product Name:	UL25 (NC_001798) Virus Tagged ORF Clone
Tag:	Myc-DDK
Symbol:	UL25
Mammalian Cell Selection:	Neomycin
Vector:	pCMV6-Entry (PS100001)
E. coli Selection:	Kanamycin (25 ug/mL)



[View online »](#)

**ORF Nucleotide Sequence:**

>The Viral ORF clone VC100889 represents NCBI reference of NP\_044494 with codon optimized for human cell expression

Red=Cloning site Blue=ORF Green=Tags(s)

GACGTTGTATACGACTCCTATAGGGCGGCCGGAATTCGTCGACTGGATCCGGTACCGAGGAGATCTGCC  
GCC**CGATCGCC**

ATGGATCCTTATTATCCCTTCGACGCTCTCGACGTGTGGGAACACCGCGATTTCATCGTTGCCGATAGTC  
GCAGCTTTATCACACCCGAATCCCCAGAGATTTTGGATGCTTCCAGTTTTCAACATCCCACGGGAAAC  
TGCTGCCGAGCGGGCTGCCGTGCTGCAGGCACAGCGGACAGCTGCGGCCGCTGCATTGGAGAACGCGGCT  
CTTCAAGCCGCTGAGCTGCCAGTGGATATCGAACGCAGAATCCGGCCTATTGAACAGCAGGTGCACCATA  
TCGCGGACGCTTTGGAGGCGCTCGAAACAGCTGCAGCTGCAGCTGAGGAAGCCGACGCAGCTCGAGATGC  
CGAAGCTAGAGGAGAGGGAGCCCGCATGGTGTGCCCATCCCCACAGCCGGGCTGCTGCCGCAGAG  
ATGGAAGTCCAGATAGTGCAGGAATGATCCACCCTCAGATATGACACAAACCTGCCTGTGGATCTCTTGC  
ATATGGTCTATGCAGGACGCGGGCCCGCGGATCCAGTGGCGTCTTTCGGAACATGGTACCGGACTAT  
ACAGGAGCGCACCATCGCTGATTTCCCTCTTACCACCCGACGCGCGATTCCGAGATGGAAGAATGTCC  
AAGACATTCATGACCGCCTTGGTACTCAGCCTCAGAGCTGCGGTGCGACTCTACGTCGGACAAAGACT  
ACTCTGCCTTCGAGTGCAGATTCTCTGCCTCTACCTCCTTTACAGGACTACACAGAGTCATCCCTGA  
TCGGGACCGCGCCCACTGGCTTTCGGCGACTTGTGGCTAGGCTCCCCAGGTACCTTGCCAGACTCGCT  
GCCGTGATAGGGGACGAGAGCGGGAGGCCCTCAGTACAGATACCGGGATGACAAGTCCCCAAAGCCCAAT  
TCGCCGCTGTGGCGGACAGTACGAGCACGGGCGCTCGCCACACATGTGGTCAATCGAACCCCTGTTAG  
ACATGGGGTCTTCTGCCGCCCGGAGATGTTCCACGCGATACCTCCACACGGGTTAATCCTGACGAT  
GTCCGCCATCGAGACGATGTGAACAGGGCAGCCGCCCTTCTGCCCCGCGGACACAACCTTTTTCTCT  
GGGAGGACAGACACTCCTCAGGGCCACAGCTAATACTATTACTGCACTGGCTGTGTTGGCGAGGTGCT  
GGCAAATGGTAACGTCTATGCCGACAGACTGGACAACAGACTGCAGCTGGGCATGCTCATCCCCGGGCT  
GTGCCTGCTGAAGCCATTGCCAGAGGAGCCAGCGGATTGGATAGCGGTGCTATAAAGTCCGGAGACAACA  
ACCTGGAAGCCTTGTGCGTGAATATGCTCTGCCCTCTATCAGGCCGATCCCACCGTGGAACTTACACA  
ATTGTTCCCCGGGCTGGCTGCACTCTGCCTGGATGCACAGGCCGACGCCCTGGCATCTACACGCCGG  
GTAGTCGACATGAGTTCTGGAGCACGGCAAGCTGCTCTCGTCCGGCTGACTGCCCTCGAAGTATAAACC  
GAACACGAACCAACCACCCCGTTGGCGAGATCATAAAGCTCATGACGCCCTCGGGATTCAGTACGA  
GCAAGGTCCCGGTTGCTTGACAGCAGGCCAGAATTGGCTGGCTCCAATACCAAACGATTTGCCACG  
TTAATGTAGGAAGCGACTATGACCTGCTATTTTCTTGTCTCGGCTTATACCGCAGTACCTGTCCG  
TCGCA

**ACGCGT**ACGCGGCCGCTCGAGCAGAACTCATCTCAGAAGAGGATCTGGCAGCAAATGATATCCTGGATT  
ACAAGGATGACGACGATAAGGTTTAA

**Protein Sequence:**

>VC100889 representing NP\_044494

Red=Cloning sites Green=Tags

MDPYYPFDALDVWEHRRFIVADSRSFITPEFPRDFWMLPVFNIPRETAERAAYLQAQRTAAAAALENAA  
LQAAELPVDIERRIRPIEQVHHIADALEALETAAAAEEADAARDAEARGEGAADGAAPSPTAGPAAAE  
MEVQIVRNDPPLRYDTNLPVDLLHMVYAGRGAAGSSGVVFGTWYRTIQERTIADFPLTTRSADFRDGRMS  
KTFMTALVLSLQSCGRLYVQQRHYSFAFCAVLCLYLLYRTTHESSPDRDRAPVAFGDLLARLPRYLARLA  
AVIGDESGRPQYRYRDDKLPKAQFAAAGGRYEHGALATHVVIATLVRHGVLPAPGDVPRDTSTRVNPDD  
VAHRDDVNRAAAFLARGHNLFLWEDQTLRATANTITALAVLRRLLANGNVYADRLDNRLQLGMLIPGA  
VPAAEIARGASGLDSGAIKSGDNNLEALCVNYVLPYQADPTVELTQLFPGLAALCLDAQGRPLASTRR  
VYDMSSGARQAALVRLTALELINRTRTNTTPVGEIINAHDALGIQYEQGPGLLAQQAIRIGLASNTKRFAT  
FNVGSDYDLLYFLCLGFIPQYLSVA

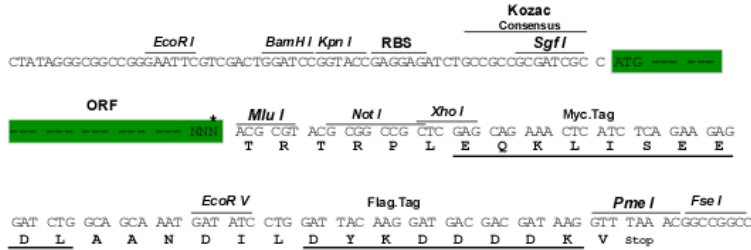
**TR**TRRLEQKLISEEDLAANDILDYKDDDDKV

**Restriction Sites:**

Sgfl-MluI

**Cloning Scheme:**

Cloning sites used for ORF Shuttling:



\* The last codon before the Stop codon of the ORF

**ACCN:** NC\_001798

**ORF Size:** 1755 bp

**OTI Disclaimer:** The molecular sequence of this clone can be viewed by clicking the "ORF Nucleotide Sequence" link above. This sequence represents the NCBI reference after codon optimization for human cell expression, and retaining the same decoded protein sequence. The stop codon in the native sequence was removed to create the in-frame c-terminal fusion with a Myc-DDK tag.

**Components:** The ORF clone is ion-exchange column purified and shipped in a 2D barcoded Matrix tube containing 10ug of transfection-ready, dried plasmid DNA (reconstitute with 100 ul of water).

- Reconstitution Method:**
1. Centrifuge at 5,000xg for 5min.
  2. Carefully open the tube and add 100ul of sterile water to dissolve the DNA.
  3. Close the tube and incubate for 10 minutes at room temperature.
  4. Briefly vortex the tube and then do a quick spin (less than 5000xg) to concentrate the liquid at the bottom.
  5. Store the suspended plasmid at -20°C. The DNA is stable for at least one year from date of shipping when stored at -20°C.

**RefSeq:** [NC\\_001798.1](#), [NP\\_044494](#)
**RefSeq ORF:** 1755 bp

**Locus ID:** 1487309

**MW:** 63.6 kDa