

Product datasheet for **VC100885**

UL21 (NC_001798) Virus Tagged ORF Clone

Product data:

Product Type:	Expression Plasmids
Product Name:	UL21 (NC_001798) Virus Tagged ORF Clone
Tag:	Myc-DDK
Symbol:	UL21
Mammalian Cell Selection:	Neomycin
Vector:	pCMV6-Entry (PS100001)
E. coli Selection:	Kanamycin (25 ug/mL)



[View online »](#)

ORF Nucleotide Sequence:

>The Viral ORF clone VC100885 represents NCBI reference of NP_044490 with codon optimized for human cell expression

Red=Cloning site Blue=ORF Green=Tags(s)

GACGTTGTATACGACTCCTATAGGGCGGCCGGAATTCGTCGACTGGATCCGGTACCGAGGAGATCTGCCGCC**CGCATCGC**

ATGGAACCTAGCTATGCTACGACCTTGACCACCGAGATGTGGTATTCTATGTGACTGCTGATAGGAATCGCGCTATTTTGTGGCGCGGAAGCGTCTACTCCGTCGGCCGACCGAGAGACTCCAGCCCGCGAAATGCCAAGTTTGGGCTTGTGTTGCGGGGACCGGCCAAAGGACCGGATGGTCGCCAATTATGTTAGATCCGAACCTCAGACAGAGAGGTCTGAGAGACGTCGGCCAGTGGGCGAAGATGAGGTGTTTCTGGACTCAGTGTCTGTGCTTAACCCAAATGTTTCATCCGAGCGGACGCTGATTAATACCAACGACGTCGAAGTCTGGATGATGCTCGCCGAATACTGTACTAGCCTCAGAACCTCCCCGGCGTTCTGGTGACAGGTGTGCGGGTTAGGCCAGGGATCGGGTATCGAGTTGTTGAGCATCCGGCGATCGTGAACATCTCTCCAGGTTTGCTTATACCCAAAGCCCTATGTGTTGCGCCTGGCACAAGCCACCTGCCAGATTGCCATCATCACTGGAACCGCTGGTCTCTGGCCTGTTTCGATGGGATACCTGCCCAAGGCAACCACTCGACGCACGGGATCGGCGGACAGAGTTGTGATAACAGGTACGAGAGCTCCGCGCCCAATGGCCGGTACCGGAGCCGCGCGCTGGGGCAAAACGCGCCACCGTTTCTGAATTTGTGCAGGTCAAACATATCGATCGAGTAGTTAGCCCTTCAGTGTCAAGTGC CCCCCACCATCCGCTCCCGATGCAAGTCTGCCTCCGCGCGCCTGCAGGAGGCTGCCCTCCAGGCCCACTCTCAGAGAGCTTTGGTGGGTTTTCTATGCTGGGGATCGAGCCTTGGAAAGAGCCTCATGCAGAAAGCGGTCTTACTCGCGAGGAAGTGCAGCGCTTTCATGGCTTCCGGGAACAGGCTGGAAGCTTTTCGGCTCAGTAGGAGCACCGGCATTTCTGGGAGCAGCTCTGGCCCTGTCTCCTACGCAGAAATGGCGGTGATTATATCTGATTATAGGGAGAGCGGATGTCCCATTCGCCGACTCGTGGGCTCGTGGGAAGATATATTCAGAGGCACGGCCTGTACGTCCCTGCCCTGATGAACCCACCTCGCAGATGCTATGAACGACTCTTTCGAGACGCCCTCGCCGCGCACAGTGGCCGAGCAGCTTCTCATGTTTGACCTCTTGCCTAAAGATGTGCCAGTGGGATCCGACGCACGCGCTGATTCTGCCGCTCTGCTGAGGTTCTGGATTCTCAGCGCTTACACTGGCGGATCTGTCTCTCCGAGCAGTGTACCTGGGAGCCTTCTGGGTGTCTTACGCTGGCCACGGCCGACTGGCAGCCGCTACACACCCGCAAGATTGACCGGAGTCACTTCTTGTCTTACCGTGGCGATGTGGACAGGATGAGTGCCTTTGATCGCGTCCAGCTGGCGCCGCGGACGGACCAGGACAGCGGGATATCTGGATGCTCTTTGACAGTGTGTTGGCAAGAGCACAGCACGACAGTCCGTG

ACGCGTACGCGCGCGCTCGAGCAGAAACTCATCTCAGAAGAGGATCTGGCAGCAAATGATATCCTGGATTACAAGGATGACGACGATAAGGTTTAA

Protein Sequence:

>VC100885 representing NP_044490

Red=Cloning sites Green=Tags

MELSYATTLHHRDVVFYVADNRNAYFVCGGSVSVGRPRDSQPGEIAKFGLVVRGTGPKDRMVANYVRS ELRQRGLRDVVRVGEDEVFLDSVCLLNPNVSSERDVINTNDVEVLDECLAEYCTSLRTSPGVLVTGVRVR ARDRVIELFEHPAIVNISSRFAYTPSPYVFAALQAHLPRLPSSLEPLVSGLFDGIPAPRQPLDARDRRTD VVITGTRAPRPMAGTGAGGAGAKRATVSEFVQVKHIDRVVSPSVSSAPPPSAPDASLPPPGQEAAPPGP PLRELWWVFYAGDRALEEPHAESGLTREEVRAVHGFREQAWKLFSGVAPRAFLGAALALSPQKLA VYYL IHRERRMSPFPALVRLVGRYIQRHGLYVPAPDEPTLADAMNGLFRDALAAGTVAEQLLMFDLLP PKDVPVGSARADSAALLRFVDSQRLTPGGSVSPEHVMYLGAFGLVLYAGHGRLAAATHARLTGVTSLVLT VGDVDRMSAFDRGPAGAAGRTRTAGYLDALLTVCLARAQHGQSV

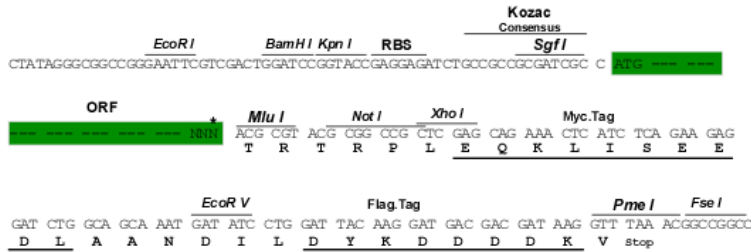
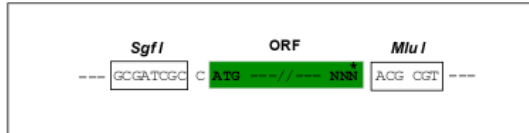
TRTRRLEQKLISEEDLAANDILDYKDDDDKV

Restriction Sites:

Sgfl-MluI

Cloning Scheme:

Cloning sites used for ORF Shuttling:



* The last codon before the Stop codon of the ORF

ACCN: NC_001798

ORF Size: 1596 bp

OTI Disclaimer: The molecular sequence of this clone can be viewed by clicking the "ORF Nucleotide Sequence" link above. This sequence represents the NCBI reference after codon optimization for human cell expression, and retaining the same decoded protein sequence. The stop codon in the native sequence was removed to create the in-frame c-terminal fusion with a Myc-DDK tag.

Components: The ORF clone is ion-exchange column purified and shipped in a 2D barcoded Matrix tube containing 10ug of transfection-ready, dried plasmid DNA (reconstitute with 100 ul of water).

Reconstitution Method:

1. Centrifuge at 5,000xg for 5min.
2. Carefully open the tube and add 100ul of sterile water to dissolve the DNA.
3. Close the tube and incubate for 10 minutes at room temperature.
4. Briefly vortex the tube and then do a quick spin (less than 5000xg) to concentrate the liquid at the bottom.
5. Store the suspended plasmid at -20°C. The DNA is stable for at least one year from date of shipping when stored at -20°C.

RefSeq: [NC_001798.1](#), [NP_044490](#)
RefSeq ORF: 1596 bp

Locus ID: 1487305

MW: 57.5 kDa