

Product datasheet for **VC100808**

UL21 (NC_001806) Virus Tagged ORF Clone

Product data:

Product Type:	Expression Plasmids
Product Name:	UL21 (NC_001806) Virus Tagged ORF Clone
Tag:	Myc-DDK
Symbol:	UL21
Mammalian Cell Selection:	Neomycin
Vector:	pCMV6-Entry (PS100001)
E. coli Selection:	Kanamycin (25 ug/mL)



[View online »](#)

ORF Nucleotide Sequence:

>The Viral ORF clone VC100808 represents NCBI reference of NP_044622 with codon optimized for human cell expression

Red=Cloning site Blue=ORF Green=Tags(s)

GACGTTGTATACGACTCCTATAGGGCGGCCGGGAATTCGTCGACTGGATCCGGTACCGAGGAGATCTGCC
GCC**CGCATCGC**C

ATGGAACTCTCCTACGCAACTACAATGCATTACAGAGACGTGGTCTTTTATGTGACAACCGATCGGAATC
GGGCTATTTCTGTGTGGCGGTTGCGTGTATTCAATTGGGCGCCCTTGTGCCTCCCAACCGAGGGAAAT
CGTAAGTTTGGGCTCGTAGGAGGTACCGGCCAGACGATCGCGTGGTGGCAACTACGTCAGATCT
GAGCTGAGACAGCGCGTCTTCAGGACGTGCGACCTATTGGCGAGGATGAGGTTTTTCTCGATTCTGTTT
GTCTGCTCAACCTAACGTGTCCAGCGAGCTGGATGTTAATAACCAACGATGTGGAAGTCTTGATGA
ATGTTTGGCGGAATACTGCACGAGTTTGGGACCTCACCTGGTGTCTCATCAGTGGGCTGAGGGTCCGG
GCACAGGATAGGATCATCGAACTCTTTGAGCATCTACGATAGTGAACGTGAGCTCCATTTTGTATACA
CTCCAAGCCCTACGTGTTCCGCTGGCCAGGCGCACCTCCCAAGACTTCCAGCTCCCTGGAAGCACT
CGTTTCTGGCCTTTTCGATGGCATAACCCGCCCCCGCCAACTCTCGACGCTCATATCCACGCACAGAC
GTGGTGATCACCGGAAGAAGAGCACCCCGGCCATTGCTGGTCTGGTGCAGGATCTGGAGTGGCGGTG
CGAAGCGCGCACTGTTAGCGAGTTCGTGCAGGTAACATATTGACAGAGTTGGACCCGCGGGGTTTC
ACCCGCCCCCTCCCCAAATAACTGACTCCTCCAGTCTCGTCCAGGTGCTCAGGATCCGCTCCTCCA
GGACCCACCTCCCGAACTGTGGTGGGCTTCTATGCCCGCGATAGAGCCCTCGAGGAACCACGGGCTG
ACTCTGGCCTTACTCGAGAAGAAGTTCGCGCCGTAAGGGGATCCGAGAGCAGGCTGGAAGCTGTTTGG
ATCAGCAGGGGCTCCACGAGCGTTCATTGGGCTGCACCTGGTCTGTCTCACTGCAGAACTTGGGCTG
TACTACTACATAATCCACCGAGAACGACGTTGTACCCCTCCCGCTCTGGTGGGCTCGTGGGCTGCT
ACACTCAGAGGCACGGGCTGTATGTTCCAAGACCGATGATCCTGTACTTGGCGATGCTATCAATGGACT
GTTCAGGATGCCTGGCTGCCGCGACAACGGCTGAACAGCTTCTGATGTTTCGATTTGCTCCCCAAAG
GATGTGCCAGTGGGTCCGATGTCCAGGCAGACTCCACAGCACTGCTGAGATTCATCGAGAGTCAGCGCC
TGGCAGTCCCGGTGGAGTTATTTACCAGAACATGTCGCTTATCTCGGAGCATTCTGAGTGTCTTTA
CGCGGGAAGGGCAGGATGTGAGCCGCTACTCACAGGCTCGGTTGACTGGGTCACAAGTCTGTTTTG
GCTGTAGGGGACGTCGACCGGCTGTCCGATTTGACAGGGGGCAGCTGGAGCCGCCAGCAGAACCAGG
CCGCCGATACTTGGACGCTCCTCTACGGTGAAGTGGCCGGAGCCAGCACGGTCACTCGTG

ACGCGTACGCGGCCGCTCGAGCAGAACTCATCTCAGAAGAGGATCTGGCAGCAAATGATATCCTGGATT
ACAAGGATGACGACGATAAGGTTTAA

Protein Sequence:

>VC100808 representing NP_044622

Red=Cloning sites Green=Tags

MELSYATTMHYRDVVFYVTTDRNRAYFVCGGCVYVGRPCASQPGEIAKFGLVVRGTGPDDRNVANYVRS
ELRQRGLQDVRPIGEDEVFLDSVCLLNPNVSSSELDVINTNDVEVLDECLAEYCTSLRTSPGVLISGLRVR
AQDRIIELEFHEPTIVNVSSHVYTPSPYVVALAQAHLPRLPSSLEALVSGLFDGIPAPRQPLDAHNPRTD
VYITGRRAPRPIAGSGAGSGGAGAKRATVSEFVQVKHIDRVGPAGVSPAPPNNNTDSSSLVPGAQDSAPP
GPTLRELWWVFYAADRAL EEPRA DSGLTREEVRAVRGFRQAWKLFSGAGAPRAFIGAALGLSPLQKLAV
YYYIIHRERRLSPFPALVRLVGRYTRHGLYVPRPDDPVLADAINGLFRDALAAGTTAEQLLMFDLLPPK
DVPVGSVDQADSTALLRFIESQRLAVPGGVI SPEHVAYLGAFLSVLYAGRGRMSAATHTARLTGVTSLVL
AVGDVDRLSAFDRGAAGAASRTRAAGYLDVLLTVRLARSQHGSV

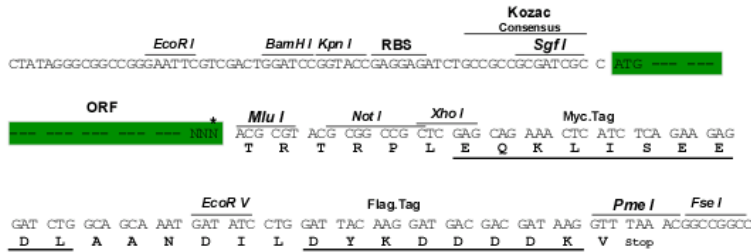
TRTRRLEQKLISEEDLAANDILDYKDDDDKV

Restriction Sites:

Sgfl-MluI

Cloning Scheme:

Cloning sites used for ORF Shuttling:



* The last codon before the Stop codon of the ORF

ACCN: NC_001806

ORF Size: 1605 bp

OTI Disclaimer: The molecular sequence of this clone can be viewed by clicking the "ORF Nucleotide Sequence" link above. This sequence represents the NCBI reference after codon optimization for human cell expression, and retaining the same decoded protein sequence. The stop codon in the native sequence was removed to create the in-frame c-terminal fusion with a Myc-DDK tag.

Components: The ORF clone is ion-exchange column purified and shipped in a 2D barcoded Matrix tube containing 10ug of transfection-ready, dried plasmid DNA (reconstitute with 100 ul of water).

Reconstitution Method:

1. Centrifuge at 5,000xg for 5min.
2. Carefully open the tube and add 100ul of sterile water to dissolve the DNA.
3. Close the tube and incubate for 10 minutes at room temperature.
4. Briefly vortex the tube and then do a quick spin (less than 5000xg) to concentrate the liquid at the bottom.
5. Store the suspended plasmid at -20°C. The DNA is stable for at least one year from date of shipping when stored at -20°C.

RefSeq: [NC_001806.1](#), [NP_044622](#)
RefSeq ORF: 1605 bp

Locus ID: 2703372

UniProt ID: [P04413](#)
MW: 57.6 kDa