

## Product datasheet for **VC100789**

### UL2 (NC\_001806) Virus Tagged ORF Clone

#### Product data:

Product Type:	Expression Plasmids
Product Name:	UL2 (NC_001806) Virus Tagged ORF Clone
Tag:	Myc-DDK
Symbol:	UL2
Mammalian Cell Selection:	Neomycin
Vector:	pCMV6-Entry (PS100001)
E. coli Selection:	Kanamycin (25 ug/mL)
ORF Nucleotide Sequence:	>The Viral ORF clone VC100789 represents NCBI reference of NP_044603 with codon optimized for human cell expression Red=Cloning site Blue=ORF Green=Tags(s)

GACGTTGTATACGACTCCTATAGGGCGGCCGGGAATTCGTCGACTGGATCCGGTACCGAGGAGATCTGCC  
GCC**CGATCGCC**

ATGAAACGAGCTTGTTCACGGTCCCCGAGCCCGAGGCGCCGCCCATCTTCACCCGGCGGACCCCTCCAC  
GCGATGGAACACCCACAGAAAGCTGATGCCGATGATCCAACACCCGGTGCTTCAAACGATGCTTCTAC  
TGAACCTAGACCCGGGTCTGGCGCGAGCCAGCCGCATGCCGATCAAGTGGGCCAGCCGCATCTCGCT  
GCGCTCGAGGCAGGACCAGCTGGGGTGACATTTCCAGTTCTGCCCGCCAGATCCTCTATGGATCTGA  
CCAATGGTGCGTTTTACCTGCTGCTACTTCTGCCCTCTGGACTGGACTACCTTCAGGCGAGTGTCTCT  
TATTGACGATGCGTGGCGCCTCTCATGGAGCCAGAATTGGCCAACCACTTACAGCTCATCTCCTCGCA  
GAGTATAACCGGAGGTGCCAAACGGAGGAGGACTGCCTCCCAGAGAGGACGTTTTTCAGCTGGACTAGAT  
ATTGCACCCCTGATGAAGTCCGCGTGGTGATTATCGGTCAGGACCCATATCACCACCCGGCCAGGCTCA  
TGGTCTGGCCTTCTCCGTGCGAGCTAATGTCCCTCCCCCTCCGTCTCTGCGCAACGTGCTGGCTGCCGTG  
AAGAACTGCTATCCAGAGGCTAGAATGTCAGGCCACGGGTGCCTGAAAAGTGGGCTCGGGATGGCGTGC  
TGCTCCTGAACACTACACTCACAGTAAAAAGAGGCGCCGCTGCCAGTACAGCCGGATTGGCTGGGATCG  
CTTCGTTGGCGGTGTTATTCGCCGGCTGGCTGCTCGACGCCCTGGGCTGGTCTTTATGCTGTGGGGCACC  
CAGCCCCAGAATGCGATCAGGCCTGACCCCGCGTGCAGTGCAGTCAAGTTTTCCCATCCATCACCTC  
TCTCTAAAGTGCCATTTGGAACCTGTCAGCACTTCTTGGTGGCGAACAGATACCTTGAGACACGATCCAT  
TAGTCCCATTGATTGGTCTGTT

**ACGCGT**ACGCGGCCGCTCGAGCAGAACTCATCTCAGAAGAGGATCTGGCAGCAAATGATATCCTGGATT  
ACAAGGATGACGACGATAAGGTTTAA



[View online >](#)

**Protein Sequence:** >VC100789 representing NP\_044603  
 Red=Cloning sites Green=Tags

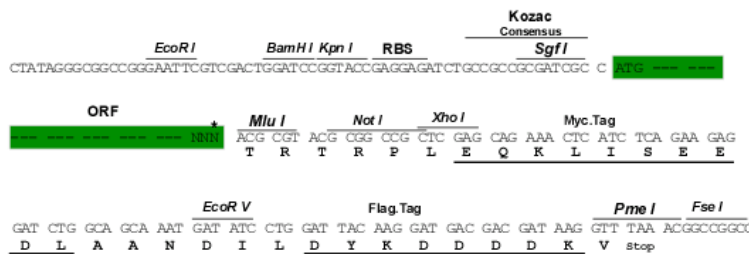
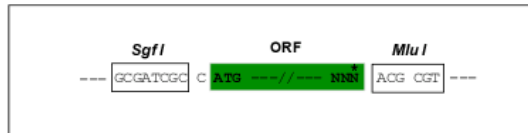
MKRACSRSPSPRRRPSSPRRTPPRDGTPPQKADADDPTPGASNDASTETRPGSGGEPAAACRSSGPAALLA  
 ALEAGPAGVTFSSAPPDPPMDLTNGGVSPAATSAPLDWTTFRRVFLIDDAWRPLMEPELANPLTAHLLA  
 EYNRRQCQTEEVLPREDVFSWTRYCTPDEVRVVIIGQDPYHHPGQAHGLAFSVRANVPPPSLRNVLAAV  
 KNCYPEARMSGHGCLKWARDGVLLNTTLTVKRGAAASHSRIGWDRFVGGVIRRLAARRPGLVFMLWGT  
 HAQNAIRPDPRVHCVLKFSHPSPLSKVFPFGTCQHFLVANRYLETRSISPIDWSV

TRTRRLEQKLISEEDLAANDILDYKDDDDKV

**Restriction Sites:** SgfI-MluI

**Cloning Scheme:**

Cloning sites used for ORF Shuttling:



\* The last codon before the Stop codon of the ORF

**ACCN:** NC\_001806

**ORF Size:** 1002 bp

**OTI Disclaimer:** The molecular sequence of this clone can be viewed by clicking the "ORF Nucleotide Sequence" link above. This sequence represents the NCBI reference after codon optimization for human cell expression, and retaining the same decoded protein sequence. The stop codon in the native sequence was removed to create the in-frame c-terminal fusion with a Myc-DDK tag.

**Components:** The ORF clone is ion-exchange column purified and shipped in a 2D barcoded Matrix tube containing 10ug of transfection-ready, dried plasmid DNA (reconstitute with 100 ul of water).

- Reconstitution Method:**
1. Centrifuge at 5,000xg for 5min.
  2. Carefully open the tube and add 100ul of sterile water to dissolve the DNA.
  3. Close the tube and incubate for 10 minutes at room temperature.
  4. Briefly vortex the tube and then do a quick spin (less than 5000xg) to concentrate the liquid at the bottom.
  5. Store the suspended plasmid at -20°C. The DNA is stable for at least one year from date of shipping when stored at -20°C.

RefSeq: [NC\\_001806.1](#), [NP\\_044603](#)  
RefSeq ORF: 1002 bp  
Locus ID: 2703370  
UniProt ID: [P04413](#)  
MW: 36.3 kDa