

## Product datasheet for **VC100774**

### NTPase 2C (NC\_001430) Virus Tagged ORF Clone

#### Product data:

Product Type:	Expression Plasmids
Product Name:	NTPase 2C (NC_001430) Virus Tagged ORF Clone
Tag:	Myc-DDK
Symbol:	NTPase 2C
Mammalian Cell Selection:	Neomycin
Vector:	pCMV6-Entry (PS100001)
E. coli Selection:	Kanamycin (25 ug/mL)
ORF Nucleotide Sequence:	>The Viral ORF clone VC100774 represents NCBI reference of NP_740744 with codon optimized for human cell expression <b>Red</b> =Cloning site <b>Blue</b> =ORF <b>Green</b> =Tags(s)

GACGTTGTATACGACTCCTATAGGGCGGCCGGGAATTCGTCGACTGGATCCGGTACCGAGGAGATCTGCC  
GCC**CGATCGCC**

ATGAGCGACAGTTGGCTGAAGAAGTTCACCGAAGCTTGAATGCCCTTCGCGGGTTGGACTGGCTGGCTC  
AAAAGATAGACAAATTTATCAACTGGCTGAAAACCAAATCCTTCCTGAGGCTCGGGAGAAGCAGCAATT  
TGTGCAGAAGCTTAAACAGCTGCCCGTGATCGAATCTCAGATCAACACGATTGAGCATAGTTGCCAAAT  
TCCGAGNNCAGCAAGCCTTGTCAACAATGTCCAGTATTATTCTCACTATTGTAAAAAATACGCTCCTC  
TTTATGCGTTGGAGGCAAAAAGAGTGTCCGCACTTGAAAGAAAGATTAACAATTATATCCAGTTTAAATC  
AAAGAGTCGGATTGAACCTGTCTGCCTGATCATTATGATCTCCAGGAACAGGCAAATCAGTGGCTTCT  
AACCTTATTGCCAGGGCCATCACCGAAAAGCTGGGCGGGACAGCTATTCACTGCCACCCGATCCAAAGT  
ACTTCGACGGTTATAAGCAACAGACCGTCGTCCTCATGGATGACCTTATGCAAAATCCAGACGGAATGA  
TATTGCCATGTTTGTGATGGTGGTACCCTGGACTTATCCCCCAATGGCTAGCCTGGAGGAGAAG  
GGCAGTTGTATACGAGCCGTTTTTGTGCTACAATAACGCAGGGAGTATCCATGCCCTACAGTCT  
CTGACTCTAAGGCTTTGGCACGGCGATTTAAGTTCGATATGGAGATAGAGAGCATGGAATCTTATAAGGA  
CGGTGTGCGATTGGACATGTTTAAAGCTGTGGAGCTCTGTAACCCTGAAAAGTGCCGGCCACTAATAT  
AAAAAATGCTGCCCACTGATATGCGGAAAGGCAATCCAGTTTCGCGACAACGCACTAACGTCGGATACT  
CAGTCGACATGCTGGTGACCGAGATGATTAAGGAATATCGCATCAGGAACTCCACTCAGGACAAGCTCGA  
AGCCTTGTTCAA

**ACGCGT**ACGCGGCCGCTCGAGCAGAACTCATCTCAGAAGAGGATCTGGCAGCAAATGATATCCTGGATT  
ACAAGGATGACGACGATAAGGTTTAA



[View online »](#)

**Protein Sequence:** >VC100774 representing NP\_740744  
 Red=Cloning sites Green=Tags

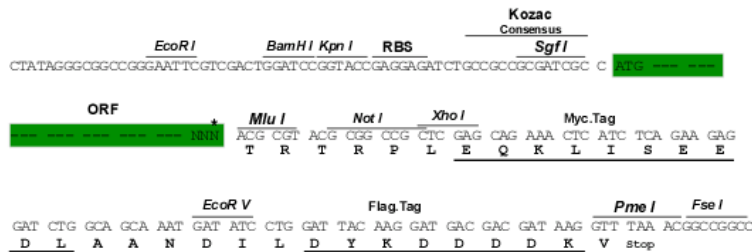
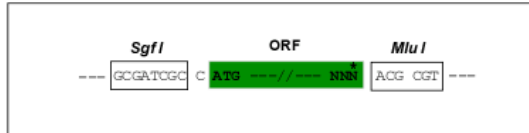
MDSWLKKFTEACNALRGLDWLAQKIDKFINWLKTKILPEAREKHEFVQKLKQLPVIESQINTIEHSCPN  
 SEXQQALFNNVQYYSHYCKKYAPLYALEAKRVSALEKINNYIQFKSKSRIEPVCLIIHGSPGTGKSVAS  
 NLIARAITEKLGDSYSLPPDPKYFDGYKQQTIVLMDLQNPDPGNDIAMFCQMVSTVDFIPPMASLEEK  
 GTLYTSPFLIATTNAGSIHAPTVDSDSKALARRFKFDMEIESMESYKDGVRLLDMFKAVELCNPEKCRPTNY  
 KKCCPLICGKAIQFRDKRTNVRYSVDMLVTEMIKEYRIRNSTQDKLEALFQ

TRTRRLEQKLISEEDLAANDILDYKDDDDKV

**Restriction Sites:** SgfI-MluI

**Cloning Scheme:**

Cloning sites used for ORF Shuttling:



\* The last codon before the Stop codon of the ORF

**ACCN:** NC\_001430

**ORF Size:** 993 bp

**OTI Disclaimer:** The molecular sequence of this clone can be viewed by clicking the "ORF Nucleotide Sequence" link above. This sequence represents the NCBI reference after codon optimization for human cell expression, and retaining the same decoded protein sequence. The stop codon in the native sequence was removed to create the in-frame c-terminal fusion with a Myc-DDK tag.

**Components:** The ORF clone is ion-exchange column purified and shipped in a 2D barcoded Matrix tube containing 10ug of transfection-ready, dried plasmid DNA (reconstitute with 100 ul of water).

- Reconstitution Method:**
1. Centrifuge at 5,000xg for 5min.
  2. Carefully open the tube and add 100ul of sterile water to dissolve the DNA.
  3. Close the tube and incubate for 10 minutes at room temperature.
  4. Briefly vortex the tube and then do a quick spin (less than 5000xg) to concentrate the liquid at the bottom.
  5. Store the suspended plasmid at -20°C. The DNA is stable for at least one year from date of shipping when stored at -20°C.

RefSeq: NC\_001430.1, NP\_740744  
RefSeq ORF: 993 bp  
MW: 37.9 kDa