

Product datasheet for **VC100771**

capsid protein 1D version 3 (NC_001430) Virus Tagged ORF Clone

Product data:

Product Type:	Expression Plasmids
Product Name:	capsid protein 1D version 3 (NC_001430) Virus Tagged ORF Clone
Tag:	Myc-DDK
Symbol:	capsid protein 1D version 3
Mammalian Cell Selection:	Neomycin
Vector:	pCMV6-Entry (PS100001)
E. coli Selection:	Kanamycin (25 ug/mL)
ORF Nucleotide Sequence:	>The Viral ORF clone VC100771 represents NCBI reference of NP_740743 with codon optimized for human cell expression Red=Cloning site Blue=ORF Green=Tags(s)

GACGTTGTATACGACTCCTATAGGGCGGCCGGAATTCGTCGACTGGATCCGGTACCGAGGAGATCTGCC
GCC**CGATCGCC**

ATGATCGGTGAGATCGTTAAGACAGTGGCTAACACAGTGGAAAGCGAAATCAAGGCAGAATTGGGGTGA
TACCTAGTTTGAACGCAGTGGAGACCGGAGCGACATCTAATACAGAACCAGAGGAGGCCATCCAGACGCG
CACTGTCAATATGCACGGTACGGCCGAATGCTTGGTCGAAAATTCCTCGGCCGGTCTGCACCTGGTG
TGTATGGGAGTTTTGAATACAAGAACCATTCAACCTCCACATCATCTATCCAGAAGAATTTTTATCT
GGACTCTGAATACCCGAGAGCTGGTGCAGATTCGACGAAAATGGAAGTTCACCTACCTGAGGTTTGA
CACAGAAATTACGATTGTGCTACTTTGCGCTGTTTAGTAGCTCCAACGTATCTTTTTCAGGACTGCCA
AATTTGACGTTGCAGGCTATGTATGTGCCAACCGGCGCAAGGAAGCCTTCTCCAGGATAGTTTTGAGT
GGCAGAGTGCCTGAACCCAGCGTTTTTTTTAAATTAACGACCCTCCAGCACGCTCACTATTCCTT
TATGTCCATAAATAGCGTTATGCTAATTCTACGACGGTTCGCAGTTTTGAGAAGAAGGCAACCGTA
CTCTACGGCATTAAACCCGGCTAACACAATGGGGAACCTGTGCTGCGGTTGTCAACTCTACCAGCCTG
TTCAGTACACTCTGACGGTTCGGGTTTACATGAAGCCAAAACACATTAAGGCGTGGGCTCCCGAGCACC
TCGGACAATGCCTTACACAAACATTCTTAACAACAATTACGCTGGACGCTCCGCAGCACCTAATGCCCC
ACCGCAATCGTTTCCACAGTCCACTATTAAGACGATGCCGAATGACATCAACCTTACCACCGCTGCC
CAGGTTAC

ACGCGTACGCGGCCGCTCGAGCAGAACTCATCTCAGAAGAGGATCTGGCAGCAAATGATATCCTGGATT
ACAAGGATGACGACGATAAGGTTTAA



[View online »](#)

Protein Sequence: >VC100771 representing NP_740743
 Red=Cloning sites Green=Tags

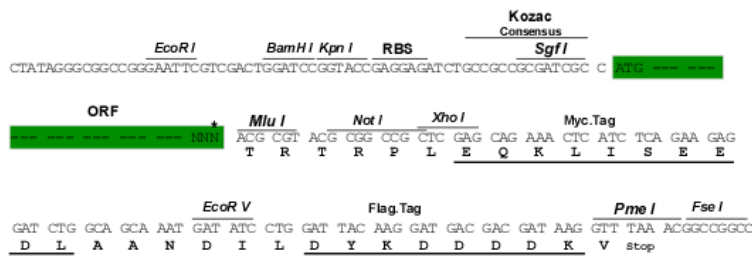
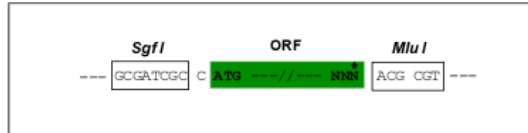
MIGEIVKTVANTVESEIKAELGVIPSLNAVETGATSNTEPEEAIQTRTVINMHGTAECLVENFLGRSALV
 CMRSFEYKNHSTSTSSIQKNFFIWTLNRELVQIRRMELFTYLRFDTEITIVPTLRLFSSSNVFSGLP
 NLTLQAMYVPTGARKPSSQDSFEWQSACNPSVFFKINDPPARLTIPFMSINSAYANFYDGFAGFEKKATV
 LYGINPANTMGNLCLRVVNSYQPVQYTLTVRVYMKPKHIKAWAPRAPRTMPYTNILNNNYAGRSAAPNAP
 TAIVSHRSTIKTMPNDINLTTAGPGY

TRTRRLEQKLISEEDLAANDILDYKDDDDKV

Restriction Sites: SgfI-MluI

Cloning Scheme:

Cloning sites used for ORF Shuttling:



* The last codon before the Stop codon of the ORF

ACCN: NC_001430

ORF Size: 918 bp

OTI Disclaimer: The molecular sequence of this clone can be viewed by clicking the "ORF Nucleotide Sequence" link above. This sequence represents the NCBI reference after codon optimization for human cell expression, and retaining the same decoded protein sequence. The stop codon in the native sequence was removed to create the in-frame c-terminal fusion with a Myc-DDK tag.

Components: The ORF clone is ion-exchange column purified and shipped in a 2D barcoded Matrix tube containing 10ug of transfection-ready, dried plasmid DNA (reconstitute with 100 ul of water).

- Reconstitution Method:**
1. Centrifuge at 5,000xg for 5min.
 2. Carefully open the tube and add 100ul of sterile water to dissolve the DNA.
 3. Close the tube and incubate for 10 minutes at room temperature.
 4. Briefly vortex the tube and then do a quick spin (less than 5000xg) to concentrate the liquid at the bottom.
 5. Store the suspended plasmid at -20°C. The DNA is stable for at least one year from date of shipping when stored at -20°C.

RefSeq: [NC_001430.1](#), [NP_740743](#)

RefSeq ORF: 918 bp

MW: 34.0 kDa