

Product datasheet for **VC100770**

capsid protein 1D version 1 (NC_001430) Virus Tagged ORF Clone

Product data:

Product Type:	Expression Plasmids
Product Name:	capsid protein 1D version 1 (NC_001430) Virus Tagged ORF Clone
Tag:	Myc-DDK
Symbol:	capsid protein 1D version 1
Mammalian Cell Selection:	Neomycin
Vector:	pCMV6-Entry (PS100001)
E. coli Selection:	Kanamycin (25 ug/mL)
ORF Nucleotide Sequence:	>The Viral ORF clone VC100770 represents NCBI reference of NP_740742 with codon optimized for human cell expression Red=Cloning site Blue=ORF Green=Tags(s)

GACGTTGTATACGACTCCTATAGGGCGGCCGGGAATTCGTCGACTGGATCCGGTACCGAGGAGATCTGCC
GCC**CGATCGCC**

ATGGCTGCCACTACGCAATCGGGGAGATCGTCAAGACCGTCGCAACACGGTGGAGAGTGAAATTAAGG
CCGAACGGGGCGTGATCCCCTCCCTTAATGCTGTGCAACCGGGGCAACTTCCAACACCGAACCCAGAAGA
GGCTATTCAGACCCGAACCGTAATCAATATGCATGGTACCGCCGAGTGTCTCGTGGAAAACCTTCTGGGC
CGGAGCGCCCTTGTGTATGCGGTCTTTCGAATATAAGAATCATTCAACCTCAACCTCTTCTATCCAGA
AGAACTTCTTCACTGGACACTCAACACGCGGGAGCTCGTGCAGATTCGGCGAAAAATGGAACCTGTTTCA
ATATCTGCGCTTTGATACTGAGATTACCATCGTACCGACCTTGGCGCTCTTCTCAAGTAGCAACGTCTCA
TTCTCCGGCCTTCCCAACCTGACCTTGCAAGCCATGTACGTTCCACCGGAGCTAGGAAGCCTAGTAGCC
AGGATTCTTTCGAGTGGCAGAGCGGTGCAACCCATCCGTTTTCTTTAAAATCAACGATCTCCAGCTAG
ACTGACTATACCGTTTATGTCTATCAATAGTGCCTACGCTAATTTTTATGACGGGTTTGGCGGCTTCGAA
AAGAAAGCGACGGTATTGTACGGGATTAACCCTGCCAACACGATGGGGAACCTCTGTCTTAGAGTGGTTA
ATAGCTATCAGCCAGTTCAGTACACTCTTACAGTACGAGTCTATATGAAACCGAAGCACATCAAGGCCTG
GGCACCAAGAGCCCAAGGACCATGCCCTACACCAATATTCTGAATAATAATTACGCCGGGCGCAGCGCT
GCACCTAATGCCCAACTGCTATAGTGTACACCGCAGCACTATTAACCAATATGCCCAATGACATAAATC
TTACGACTGCTGGCCAGGCTAT

ACGCGTACGCGGGCGCTCGAGCAGAACTCATCTCAGAAGAGGATCTGGCAGCAATGATATCCTGGATT
ACAAGGATGACGACGATAAGGTTTAA



Protein Sequence: >VC100770 representing NP_740742
 Red=Cloning sites Green=Tags

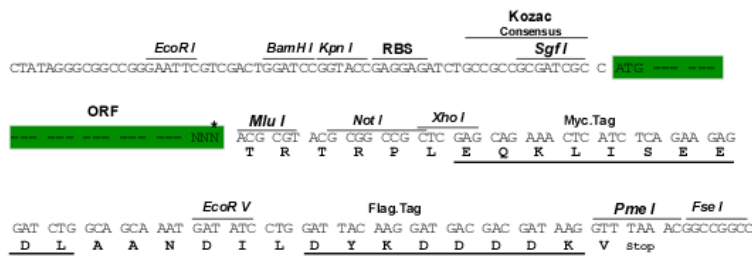
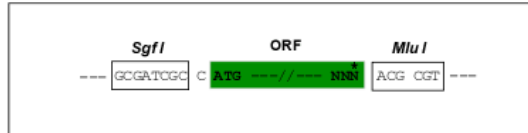
MAATTQIGEIVKTVANTVESEIKAELGVIPSLNAVETGATSNTEPEEAIQTRTVINMHGTAECLVENFLG
 RSALVCMRSFEYKNHSTSTSSIQKNFFIWTLNRELTVQIRRMELFTYLRFDTEITIVPTLRLFSSSNVS
 FSGLPNLTLQAMYVPTGARKPSSQDSFEWQSACNPSVFFKINDPPARLTIPFMSINSAYANFYDGFAGFE
 KKATVLYGINPANTMGNLCLRVVNSYQPVQYTLTVRVYMKPKHIKAWAPRAPRTMPYTNILNNNYAGRSA
 APNAPTAIVSHRSTIKTMPNDINLTTAGPGY

TRTRRLEQKLISEEDLAANDILDYKDDDDKV

Restriction Sites: SgfI-MluI

Cloning Scheme:

Cloning sites used for ORF Shuttling:



* The last codon before the Stop codon of the ORF

ACCN: NC_001430

ORF Size: 933 bp

OTI Disclaimer: The molecular sequence of this clone can be viewed by clicking the "ORF Nucleotide Sequence" link above. This sequence represents the NCBI reference after codon optimization for human cell expression, and retaining the same decoded protein sequence. The stop codon in the native sequence was removed to create the in-frame c-terminal fusion with a Myc-DDK tag.

Components: The ORF clone is ion-exchange column purified and shipped in a 2D barcoded Matrix tube containing 10ug of transfection-ready, dried plasmid DNA (reconstitute with 100 ul of water).

- Reconstitution Method:**
1. Centrifuge at 5,000xg for 5min.
 2. Carefully open the tube and add 100ul of sterile water to dissolve the DNA.
 3. Close the tube and incubate for 10 minutes at room temperature.
 4. Briefly vortex the tube and then do a quick spin (less than 5000xg) to concentrate the liquid at the bottom.
 5. Store the suspended plasmid at -20°C. The DNA is stable for at least one year from date of shipping when stored at -20°C.

RefSeq: [NC_001430.1](#), [NP_740742](#)
RefSeq ORF: 933 bp
MW: 34.5 kDa