

## Product datasheet for **VC100769**

### capsid protein 1D version 2 (NC\_001430) Virus Tagged ORF Clone

#### Product data:

Product Type:	Expression Plasmids
Product Name:	capsid protein 1D version 2 (NC_001430) Virus Tagged ORF Clone
Tag:	Myc-DDK
Symbol:	capsid protein 1D version 2
Mammalian Cell Selection:	Neomycin
Vector:	pCMV6-Entry (PS100001)
E. coli Selection:	Kanamycin (25 ug/mL)
ORF Nucleotide Sequence:	>The Viral ORF clone VC100769 represents NCBI reference of NP_740741 with codon optimized for human cell expression Red=Cloning site Blue=ORF Green=Tags(s)

GACGTTGTATACGACTCCTATAGGGCGGCCGGAATTCGTCGACTGGATCCGGTACCGAGGAGATCTGCC  
GCC**CGATCGCC**

ATGAGCGCAATCTTGCCGGAGCAAGCCGCCACCACCCAAATTGGCGAAATCGTGAAGACAGTCGCAATA  
CAGTCGAAAGTGAAATAAAGGCTGAGCTGGGCGTGATCCCTTCCCTGAATGCGGTGGAGACTGGGGCTAC  
GTCAAATACTGAGCCCGAGGAAGCAATCCAAACCCGCACCGTCATCAATATGCACGGCACAGCAGAGTGT  
CTCGTTGAAAACCTTCTTGGAAAGTCCGCCTTGGTATGTATGCGCTCATTCGAGTATAAGAAATCATAGTA  
CTTCAACTAGCTCCATCCAAAAGAACTTCTTTATCTGGACTGAACACACGCGAGCTTGTGCAGATAAG  
GAGGAAGATGGAGCTCTTACATACCTGAGGTTGACACCGAGATTACAATTGTGCCAACCTGAGACTC  
TTTTCCAGCAGCAACGTAAGCTTCTCTGGACTCCCAACCTTACCCTTCAGGCCATGTATGTGCCAACTG  
GAGCCCGCAAGCCTAGCTCACAGGATTCCTTTGAATGGCAAAGTGCCTGCAACCCAGCGTGTTTTTTAA  
GATTAACGATCCGCCAGCAGGCTTACCATTCCCTTCATGTCTATTAAGTACAGCCTATGCGAACTTTTAT  
GATGGATTTGCTGGGTTTAAAAGAAGGCAACAGTCTCTATGGGATCAATCCCGCAATACCATGGGAA  
ATCTTTGTCTCCGAGTGGTGAATTCATACCAGCCTGTTGAGTACAGTTCAGGTTGACAGTTCGGGTGACATGAA  
ACCAAGCACATCAAAGCTTGGGCGCCCGGGCTCCCCGCACTATGCCTTATACCAACATATTGAATAAC  
AACTATGCCGGCAGGTCTGCCGCACCGAACCAACCGCCATCGTATCACACCGATCCACCATCAAAA  
CGATGCCTAATGACATCAACCTTACTACTGCAGGTCGGGATAT

**ACGCGT**ACGCGGCCGCTCGAGCAGAACTCATCTCAGAAGAGGATCTGGCAGCAAATGATATCCTGGATT  
ACAAGGATGACGACGATAAGGTTTAA



[View online »](#)

**Protein Sequence:** >VC100769 representing NP\_740741  
 Red=Cloning sites Green=Tags

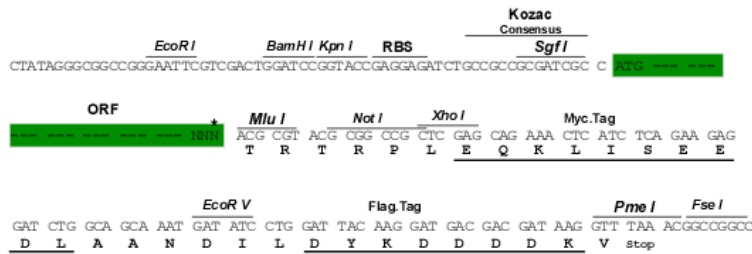
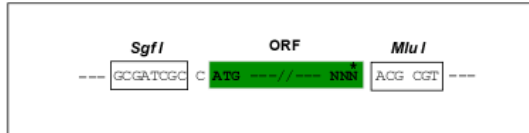
MSAILPEQAATTQIGEIVKTVANTVESEIKAELGVIPSLNAVETGATSNTPEEEAIQTRTVINMHGTAEC  
 LVENFLGRSALVCMRSFEYKNHSTSTSSIQKNFFIWTLNRELQVIRRMELFTYLRFDTEITIVPTLRL  
 FSSSNVSFSGLPNLTLQAMYVPTGARKPSSQDSFEWQSACNPSVFFKINDPPARLTIPFMSINSAYANFY  
 DGFAGFEKKATVLYGINPANTMGNLCLRVVNSYQPVQYTLTVRVYMKPKHIKAWAPRAPRTMPYTNILNN  
 NYAGRSAAPNAPTAIVSHRSTIKTMPNDINLTTAGPGY

TRTRRLEQKLISEEDLAANDILDYKDDDDKV

**Restriction Sites:** SgfI-MluI

**Cloning Scheme:**

Cloning sites used for ORF Shuttling:



\* The last codon before the Stop codon of the ORF

**ACCN:** NC\_001430

**ORF Size:** 954 bp

**OTI Disclaimer:** The molecular sequence of this clone can be viewed by clicking the "ORF Nucleotide Sequence" link above. This sequence represents the NCBI reference after codon optimization for human cell expression, and retaining the same decoded protein sequence. The stop codon in the native sequence was removed to create the in-frame c-terminal fusion with a Myc-DDK tag.

**Components:** The ORF clone is ion-exchange column purified and shipped in a 2D barcoded Matrix tube containing 10ug of transfection-ready, dried plasmid DNA (reconstitute with 100 ul of water).

- Reconstitution Method:**
1. Centrifuge at 5,000xg for 5min.
  2. Carefully open the tube and add 100ul of sterile water to dissolve the DNA.
  3. Close the tube and incubate for 10 minutes at room temperature.
  4. Briefly vortex the tube and then do a quick spin (less than 5000xg) to concentrate the liquid at the bottom.
  5. Store the suspended plasmid at -20°C. The DNA is stable for at least one year from date of shipping when stored at -20°C.

RefSeq: NC\_001430.1, NP\_740741  
RefSeq ORF: 954 bp  
MW: 35.3 kDa