

Product datasheet for **VC100672**

2A (NC_009887) Virus Tagged ORF Clone

Product data:

Product Type: Expression Plasmids
Product Name: 2A (NC_009887) Virus Tagged ORF Clone
Tag: Myc-DDK
Symbol: 2A
Mammalian Cell Selection: Neomycin
Vector: pCMV6-Entry (PS100001)
E. coli Selection: Kanamycin (25 ug/mL)
ORF Nucleotide Sequence: >The Viral ORF clone VC100672 represents NCBI reference of YP_001497167 with codon optimized for human cell expression
 Red=Cloning site Blue=ORF Green=Tags(s)

GACGTTGTATACGACTCCTATAGGGCGGCCGGGAATTCGTCGACTGGATCCGGTACCGAGGAGATCTGCC
 GCC**CGATCGCC**

ATGGGCGCCTTCGGGCAGCAGAGCGGGCAGTTTATGTTGGGAGCTACCGCATTGTGAATAGGCACCTCG
 CAACCTACACAGATTGGCAGAAGTGTATCTGGGAGGACTATAATAGGGATCTGCTGGTCTCCACCACCAC
 AGCTCAGGGCTGTGACATTATTGCCCGCTGCCAGTGCACCACCGGAATTTACTTCTGTAGAGCAAAAAA
 AAACACTATCCAGTCTCTTTTGAAGGCCCGCCCTTGTAGAGGTCCAGGAATCCGAGTATTACCCTAAAC
 GCTACCAGAGTCATGTATTGTTGGCCGCCGATTCAAGTGTAGCCAGGAGACTGCGGGGCATCCTGAGGTG
 CGAGCACGGCGTTATCGGCGTGGTTACGATGGGAGGCGAGGGAGTGTGGCTTCGCCGATGTCCGGGAC
 CTCCTCTGGTTGGAGGACGATGCGATGGAGCAA

ACGCGTACGCGGCCGCTCGAGCAGAAACTCATCTCAGAAGAGGATCTGGCAGCAATGATATCCTGGATT
 ACAAGGATGACGACGATAAGGTTTAA

Protein Sequence: >VC100672 representing YP_001497167
 Red=Cloning sites Green=Tags

MGAFGQQSGAVYVGSYRIVNRHLATYTDWQNCIWEDYNRDLLVSTTTAQGCDIIARCQCTTGIYFCQSKN
 KHYPVSFEGPGLVEVQESEYYPKRYQSHVLLAAGFSEPGDCGILRCEHGVIQVVTMGEGVVFADVRD
 LLWLEDDAMEQ

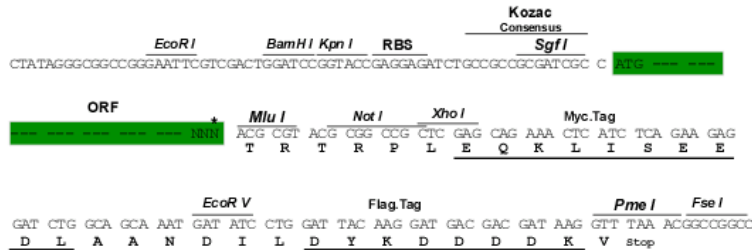
TRTRRLEQKLISEEDLAANDILDYKDDDDKV

Restriction Sites: SgfI-MluI



Cloning Scheme:

Cloning sites used for ORF Shuttling:



* The last codon before the Stop codon of the ORF

ACCN: NC_009887

ORF Size: 453 bp

OTI Disclaimer: The molecular sequence of this clone can be viewed by clicking the "ORF Nucleotide Sequence" link above. This sequence represents the NCBI reference after codon optimization for human cell expression, and retaining the same decoded protein sequence. The stop codon in the native sequence was removed to create the in-frame c-terminal fusion with a Myc-DDK tag.

Components: The ORF clone is ion-exchange column purified and shipped in a 2D barcoded Matrix tube containing 10ug of transfection-ready, dried plasmid DNA (reconstitute with 100 ul of water).

Reconstitution Method:

1. Centrifuge at 5,000xg for 5min.
2. Carefully open the tube and add 100ul of sterile water to dissolve the DNA.
3. Close the tube and incubate for 10 minutes at room temperature.
4. Briefly vortex the tube and then do a quick spin (less than 5000xg) to concentrate the liquid at the bottom.
5. Store the suspended plasmid at -20°C. The DNA is stable for at least one year from date of shipping when stored at -20°C.

RefSeq: [NC_009887.1](#), [YP_001497167](#)
RefSeq ORF: 453 bp

MW: 16.7 kDa