

Product datasheet for VC100587

HCoV-HKU1 nsp15 Gene Tagged ORF Clone

Product data:

Product Type:	Expression Plasmids
Product Name:	HCoV-HKU1 nsp15 Gene Tagged ORF Clone
Tag:	Myc-DDK
Symbol:	nsp15
Mammalian Cell Selection:	Neomycin
Vector:	pCMV6-Entry (PS100001)
E. coli Selection:	Kanamycin (25 ug/mL)
ORF Nucleotide Sequence:	>The Viral ORF clone VC100587 represents NCBI reference of YP_460022 with codon optimized for human cell expression Red=Cloning site Blue=ORF Green=Tags(s)

GACGTTGTATACGACTCCTATAGGGCGGCCGGGAATTCGTCGACTGGATCCGGTACCGAGGAGATCTGCC
GCC**CGATCGCC**

ATGTCCCTTGAGAACGTGATCTACAACCTGGTGAATGTTGGACACTACGACGGGAGGACCGGCGAGCTGC
CGTGTGCTATCATGAATGACAAAGTGGTGGTAAAAATCAATAACGTCGATACTGTTATTTTCAAGAACAA
TACCTCCTCCCAACTAACATAGCCGTGGAGCTGTTTACTAAAAGGAGTATACGGCACCACCCCGAGCTG
AAGATACTCCGGAACCTGAACATAGACATCTGTTGAAACACGTGCTGTGGGACTATGTCAAGGATTCTC
TGTTTTGCAGCAGTACTTACGGAGTGTGCAAGTACACAGATCTTAAGTTCATCGAGAATCTGAACATCCT
GTTTGATGGCAGAGATACCGGGCTCTCGAGGCCCTTCGGAAGGCTAGGAATGGTGTCTTTATATCTACT
GAGAAGCTGAGCCGGCTGAGCATGATTAAGGACCCCAAAGAGCAGATCTGAACGGCGTCATCGTCGACA
AAGTGGGCGAACTCAAAGTGGAATTCTGGTTTGAATGAGAAAAGACGGAGATGACGTGATCTTCTCTCG
AACCGACAGCCTGTGTTCTAGCCACTATTGGTACCTCAGGGCAACCTTGGTGGCAACTGCGCCGGGAAT
GTCATTGGTAATGACGCACTGACACGCTTTACCATATCCACAGTCACGGGTGCTCTCATCTTTGAAC
CACGGTCAGACCTTGAAGAGACTTCATCGATATGGATGACAATCTGTTTATTGCAAAATACGGCCTGGA
GGACTATGCATTTGATCAGATAGTTTATGGTAGCTTCAACCACAAAGTGATCGGAGGGCTTCATCTCTTG
ATCGGCCTGTTTCAAGAAAAAAGAAGAGTAACCTGCTGATACAGGAATTTCTGCAGTATGATTCAGCA
TCCACAGCTACTTTATACGGATCAGGAGTGCGGATCCTCAAAGAGCGTCTGCACTGTATCGATCTGCT
GTTGGATGATTTTGTGTCATTGTGAAAAGTTGAACCTGAGCTGTGTGCTAAGGTGGTGAACATAAAT
GTGGACTTCAAGGACTTCCAGTTTATGCTTTGGTGAATGATAATAAAATAATGACATTTTATCCCAAGA
TGCAA

ACGCGTACGCGGCCGCTCGAGCAGAACTCATCTCAGAAGAGGATCTGGCAGCAATGATATCCTGGATT
ACAAGGATGACGACGATAAGGTTTAA



[View online »](#)

Protein Sequence: >VC100587 representing YP_460022
Red=Cloning sites Green=Tags

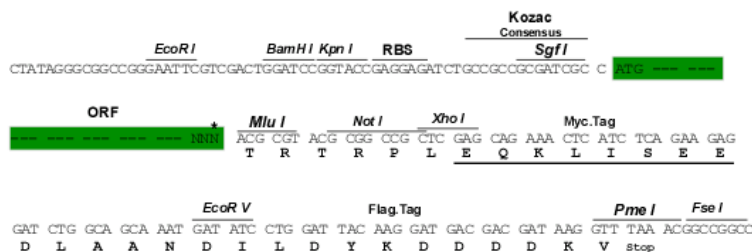
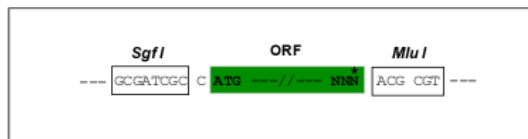
MSLENIYNLVNVGHYDGRTEGELPCAIMNDKVVVKINNVDTVIFKNNTSFPTNIAVELFTKRSIRHHPEL
 KILRNLNIDICWKHVLWDYVKDSLFCSSSTYGVCKYTDLKFIEENLNILFDGRDTGALEAFRKARNGVFIST
 EKL SRLSMIKGPQRADLNGVIVDKV GELKVEFWFAMRKGDDVIF SRTDSLCS SHYWSPQGNLGGNCAGN
 VIGNDAL TRFTIF TQSRVLS SFEP RSDLERDFIDMDDNLFIAKYGL EDYAFDHI VYGSFNHKVIGGLHLL
 IGLFRRKKSNLLIQEFLQYDSSIHSYFITDQECGSSKSVCTVIDLLLDFFVSI VSKLNLSCVSKVVNIN
 VDFKDFQFMLWCNDNKIMTFYPKMQ

TRTRRLEQKLISEEDLAANDILDYKDDDDKV

Restriction Sites: SgfI-MluI

Cloning Scheme:

Cloning sites used for ORF Shuttling:



* The last codon before the Stop codon of the ORF

ACCN: NC_006577

ORF Size: 1125 bp

OTI Disclaimer: The molecular sequence of this clone can be viewed by clicking the "ORF Nucleotide Sequence" link above. This sequence represents the NCBI reference after codon optimization for human cell expression, and retaining the same decoded protein sequence. The stop codon in the native sequence was removed to create the in-frame c-terminal fusion with a Myc-DDK tag.

Components: The ORF clone is ion-exchange column purified and shipped in a 2D barcoded Matrix tube containing 10ug of transfection-ready, dried plasmid DNA (reconstitute with 100 ul of water).

Reconstitution Method:

1. Centrifuge at 5,000xg for 5min.
2. Carefully open the tube and add 100ul of sterile water to dissolve the DNA.
3. Close the tube and incubate for 10 minutes at room temperature.
4. Briefly vortex the tube and then do a quick spin (less than 5000xg) to concentrate the liquid at the bottom.
5. Store the suspended plasmid at -20°C. The DNA is stable for at least one year from date of shipping when stored at -20°C.

RefSeq: [NC_006577.2](#), [YP_460022](#)

RefSeq ORF: 1125 bp

MW: 42.9 kDa