

Product datasheet for **VC100516**

E2A (NC_001454) Virus Tagged ORF Clone

Product data:

Product Type:	Expression Plasmids
Product Name:	E2A (NC_001454) Virus Tagged ORF Clone
Tag:	Myc-DDK
Symbol:	E2A
Mammalian Cell Selection:	Neomycin
Vector:	pCMV6-Entry (PS100001)
E. coli Selection:	Kanamycin (25 ug/mL)



[View online »](#)

ORF Nucleotide Sequence:

>The Viral ORF clone VC100516 represents NCBI reference of NP_040864 with codon optimized for human cell expression

Red=Cloning site Blue=ORF Green=Tags(s)

GACGTTGTATACGACTCCTATAGGGCGGCCGGAATTCGTCGACTGGATCCGGTACCGAGGAGATCTGCC
GCC**CGATCGCC**

ATGGCCGGTAGACAGCAGGAGCTCCCTACTATCACACCTTATCTCCAGGAAACTCCCTGAAAGAGCCC
CTAGCCTGCCACCGAAGAAAAACTGCGAAAAACGTCCAGGTCCCGGACAGGGTCCCCGTACTCCACCC
TCCCCCTGAAGTGGTGCCAGACTCTGAAGAGGAGGAAGAGGAAGTGGTGTACACCGGCTTTTCTCACCCA
GGCGTTACAGTGGTTCAGAAGGCCTCCGAAAAGAGGTATGTTAGGCGGCTGGAGCCTAAGGGTGTGCCAC
CTCCCAGTGAGGAGAACAACGAGGAGGAGGAACCTCTACGTCCAAGGCCGTGACGAGCGTCGTTTTGAA
CCCACAGGCGGAACCCCTTGTCTCTGCCTGGGAAAAGGGATGGATCTGATGATTAACATGAAAAAG
TACCATGTGGAGCAGAGGAGAAAAACGGCTTCAAATTTCTGCCGAACAGTCAAACGTTTATAGAAGA
TCTGTACAGCTGGTTGAACGAAGAGCATCGAGGCTGCCACTGACATTCAGTCTCATAAACTTTCTGT
TGAAATGATGGGTAGATTCTGAGAGCATACGTAGAATCATATGCAGGTGTCAAGAAACAATGAGTGGGAG
CCCACTGGCTGTGCCATCTGTTGCATGGGTGCACCGAGCAGGAGGGCGTACTGAGGTGCTACCACGGGC
TGGAAATGATACAGAAAGAACAGTTGGTGGAGATGGACGTTGCCAGTGAGAACGCCACGCGCCCTGAA
AGAGCACCCAGTAGGGCGAAAGTTGTACAGAACCAGTGGGGTCGATCAGTGGTCCAGCTCAAGAACGAT
GACGCTCGGTGTTGCGTGGAGGACGTGTCTGTGCCACCAATGTGTTCTCTGCCAAATCATGCGGACTGT
TCTTTAGCGAGGGAACCAAAGCTCAGACAGCTTCTCCTGCAGATTGAAGCATTTATGCAGGCTGAATACCC
CAAAATGCAGAACGGTCTGAAAAGATTGCTTATGGTTCATGAGGTGTGATTGCCTCTACAAGCCGACCGGG
GTGCCCCAGCTCGGTAGACAGATGTGTAAGCCACCCCTTCGCCCTTAGTAACGTGGACTCCCTGCGGG
CCGAGGAGGTAACCGATAAGGTGGCTCTCGCCAGCATTACAGTATCCGTGGTCTGGTATATCAGTGGC
TAATCCCGTCTACCGAAATTCGCCGAGGTCAAGGTCCCAATTGCGACTTCAAGATAAGTGCACCCGAC
CTGCTGGGCGCCCTTCAAGTGGTGGCGGACTCTGGGGTGAAGACGTTGATGGCCCCCTGCCAAGATGC
TGATCCCAGAGTTAAGTGGAGCTCTAGGTTGCAGTATAGAAATGTTGCCTTGCCTGCCAGCCATGGCGA
TGGCGAAAAGAGCCTTTT

ACGCGTACGCGGCCGCTCGAGCAGAAACTCATCTCAGAAGAGGATCTGGCAGCAAATGATATCCTGGATT
ACAAGGATGACGACGATAAGGTTTAA

Protein Sequence:

>VC100516 representing NP_040864

Red=Cloning sites Green=Tags

MAGRQQELPTITPYLQETSPERAPSLPPKKLRKNVQVPDRVPVLPSPPEVVPDSEEEEEVVYTGFSHP
GVQVVQKASGKRYVRRLEPKGVPPPSEENNEEEEPSTSKAVTSVVLNPQAEPLVSAWEKGMMLIKLMEK
YHVEAEEKNGFKFLPEQSNVYRICKQTLNNEHRGLPLTFTSHKTFVEMMGRFLRAYVESYAGVKNNWE
PTGCAIWLHGCTEQEGLRCYHGLEMIIQKEQLVEMDVAENARALKEHPSRAKVQNRWGRSVVQLKND
DARCCVEDVSCATNVFSAKSCGLFFSEGKAQTAFLQIEAFMQAEYPKMQNGLKRLMLVMRCDCLYKPTG
VPQLGRQMCKATPFALSNVDSLRAEEVTDKVALASIQYPCVLVYQCANPVYRNSRGGQGNPCDFKISAPD
LLGALQLVRRLLWGENVDGPLPKMLIPEFKWSSRLQYRNVALPASHGDGEKEPF

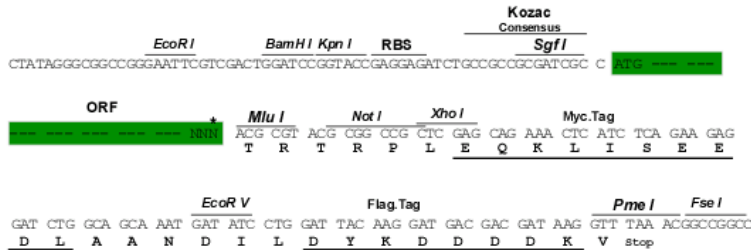
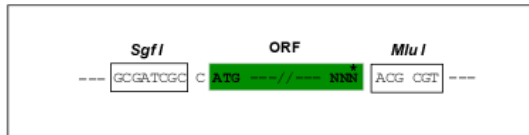
TRTRRLEQKLISEEDLAANDILDYKDDDDKV

Restriction Sites:

Sgfl-MluI

Cloning Scheme:

Cloning sites used for ORF Shuttling:



* The last codon before the Stop codon of the ORF

ACCN: NC_001454

ORF Size: 1419 bp

OTI Disclaimer: The molecular sequence of this clone can be viewed by clicking the "ORF Nucleotide Sequence" link above. This sequence represents the NCBI reference after codon optimization for human cell expression, and retaining the same decoded protein sequence. The stop codon in the native sequence was removed to create the in-frame c-terminal fusion with a Myc-DDK tag.

Components: The ORF clone is ion-exchange column purified and shipped in a 2D barcoded Matrix tube containing 10ug of transfection-ready, dried plasmid DNA (reconstitute with 100 ul of water).

Reconstitution Method:

1. Centrifuge at 5,000xg for 5min.
2. Carefully open the tube and add 100ul of sterile water to dissolve the DNA.
3. Close the tube and incubate for 10 minutes at room temperature.
4. Briefly vortex the tube and then do a quick spin (less than 5000xg) to concentrate the liquid at the bottom.
5. Store the suspended plasmid at -20°C. The DNA is stable for at least one year from date of shipping when stored at -20°C.

RefSeq: [NC_001454.1](#), [NP_040864](#)
RefSeq ORF: 1419 bp

Locus ID: 2715921

MW: 53.3 kDa