

## Product datasheet for **VC100438**

### L3 (NC\_010956) Virus Tagged ORF Clone

#### Product data:

Product Type:	Expression Plasmids
Product Name:	L3 (NC_010956) Virus Tagged ORF Clone
Tag:	Myc-DDK
Symbol:	L3
Mammalian Cell Selection:	Neomycin
Vector:	pCMV6-Entry (PS100001)
E. coli Selection:	Kanamycin (25 ug/mL)
ORF Nucleotide Sequence:	>The Viral ORF clone VC100438 represents NCBI reference of YP_001974429 with codon optimized for human cell expression Red=Cloning site Blue=ORF Green=Tags(s)

GACGTTGTATACGACTCCTATAGGGCGGCCGGAATTCGTCGACTGGATCCGGTACCGAGGAGATCTGCC  
GCC**CGATCGC**C

ATGGAGGACATAAACTTTGCTAGTCTCGCTCCCCGCCATGGCACCAGACCTTTTATGGGGACTTGGAAACG  
AGATCGGGACGTCACAGCTGAACGGTGGCGCTTCAACTGGAGCAGCGTGTGGTCCGGGCTCAAAAATTT  
TGGTCCACTCTGCGGACATACGGGAATAAGGCCTGGAATAGTTCAACCGCCAACCTCCTCAGGGAAAA  
TTGAAGGACCAGAACTTTCAGCAAAAGGTTGTGGACGGTTGGCAAGCGGGATCAATGGTGTGTAGATA  
TTGCAAACCAGGCAGTGCAGCGGAAATCAATTCTAGGTTGGACCCTCGCCCCCACAGTGGTGGAAAT  
GGAAGACGCTACTCTGCCCCACCTAAGGGGAAAAACGGCCAAGGCCAGATGCTGAAGAAACCATCCTG  
CAGGTGGATGAGCCCCGAGCTATGAGGAGGCGGTGAAAGCTGGGATGCCAACAACCCGGATCATTGCC  
CCCTCGCCACTGGCGTGATGAAACCCGCCACCCTGGATCTGCCTCCTCCCCTGCTCCAGCACCTCCCAA  
GGCCGCACCTGCAGTTGTTCCAGGCTCCACCAGTGGCCACTGCCGTAAGGCGGGTTCTGCCAGGAGACAA  
GCTCAGAACTGGCAGTCAACCCTGCATTCTATAGTCGGCTTGGGGTTAAGTCTCTGAAGAGGCGCAGGT  
GCTAC

**ACGCGT**ACGCGGCCGCTCGAGCAGAAACTCATCTCAGAAGAGGATCTGGCAGCAAATGATATCCTGGATT  
ACAAGGATGACGACGATAAGGTTTAA



[View online »](#)

**Protein Sequence:** >VC100438 representing YP\_001974429

Red=Cloning sites Green=Tags

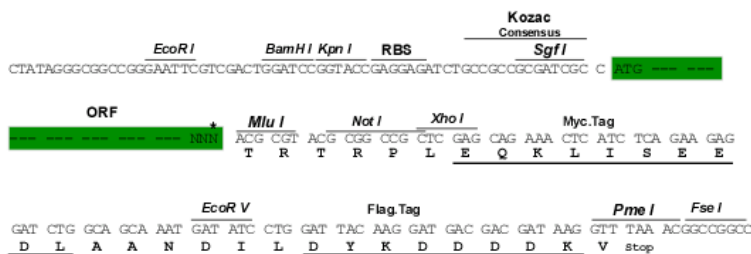
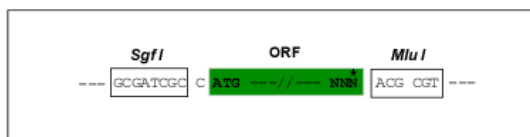
MEDINFASLAPRHGTRPFMGTWNEIGTSQLNGGAFNWSSVWSGLKNFGSTLRTYGNKAWNSSTGQLLREK  
 LKDQNFQQKVVVDGLASGINGVVDIANQAVQREINSRLDPRPPTVVEMEDATLPPPKGEKRPRPDAEETIL  
 QVDEPPSYEEAVKAGMPTTRIIAPLATGVMKPATLDLPPPPAPAPPKAAAPAVVQAPPVATAVRRVPARRQ  
 AQNWQSTLHSIVGLGVKSLKRRRCY

TRTRRLEQKLISEEDLAANDILDYKDDDDKV

**Restriction Sites:** SgfI-MluI

**Cloning Scheme:**

Cloning sites used for ORF Shuttling:



\* The last codon before the Stop codon of the ORF

**ACCN:** NC\_010956

**ORF Size:** 705 bp

**OTI Disclaimer:** The molecular sequence of this clone can be viewed by clicking the "ORF Nucleotide Sequence" link above. This sequence represents the NCBI reference after codon optimization for human cell expression, and retaining the same decoded protein sequence. The stop codon in the native sequence was removed to create the in-frame c-terminal fusion with a Myc-DDK tag.

**Components:** The ORF clone is ion-exchange column purified and shipped in a 2D barcoded Matrix tube containing 10ug of transfection-ready, dried plasmid DNA (reconstitute with 100 ul of water).

- Reconstitution Method:**
1. Centrifuge at 5,000xg for 5min.
  2. Carefully open the tube and add 100ul of sterile water to dissolve the DNA.
  3. Close the tube and incubate for 10 minutes at room temperature.
  4. Briefly vortex the tube and then do a quick spin (less than 5000xg) to concentrate the liquid at the bottom.
  5. Store the suspended plasmid at -20°C. The DNA is stable for at least one year from date of shipping when stored at -20°C.

RefSeq: [NC\\_010956.1](#), [YP\\_001974429](#)  
RefSeq ORF: 705 bp  
Locus ID: 6386283  
MW: 25.6 kDa