

## Product datasheet for **VC100405**

### E1B 19K (AC\_000006) Virus Tagged ORF Clone

#### Product data:

**Product Type:** Expression Plasmids  
**Product Name:** E1B 19K (AC\_000006) Virus Tagged ORF Clone  
**Tag:** Myc-DDK  
**Symbol:** E1B 19K  
**Mammalian Cell Selection:** Neomycin  
**Vector:** pCMV6-Entry (PS100001)  
**E. coli Selection:** Kanamycin (25 ug/mL)  
**ORF Nucleotide Sequence:** >The Viral ORF clone VC100405 represents NCBI reference of AP\_000142 with codon optimized for human cell expression  
Red=Cloning site Blue=ORF Green=Tags(s)

GACGTTGTATACGACTCCTATAGGGCGGCCGGGAATTCGTCGACTGGATCCGGTACCGAGGAGATCTGCCGCCCGATCGCC

ATGGACGTGTGGACAATCCTGGCCGACTTTTTCAAAAACACGGCGGCTGGTTGAAGACAGTTCTGACGGATGCTCTGGATTTTGGAGGCATTGGTTTGGGACCCCACTCAGTCGACTCGTTTATACCGTTAAGAAAGACTACAACGAAGAGTTCGAGAATCTCTTTGCCGACTGCAGCGGTTTGTGGACTCACTCAATCTCGGGCATCAATCCCTGTCCAAGAAAGGTTCTCCATTCCTCGACTTCAGTAGCCAGCCGGACCCTGCCGGAGTGGCCTTCGTGTTTTCTCGTGGACAAATGGTCTCAGAATACACAGCTGTCTCGAGGCTATATACTTGACTTCGCCGAATGCACCTGTGGCGAGCCTGGGTGCGGCAGCGCGACAGCGGATTCTGAATTATTGGCTCCTCAGCCTGCCGCCCGGTCTCCTGAGACTGCATAGGCAAACATCAATGTTGAAGAAGAGATGAGACAGGCGATGGACGAAAACCCCGATCTGGACTCGACCCCTCCGAAGAAGAACTCGAC

ACGCGTACGCGGCCGCTCGAGCAGAAACTCATCTCAGAAGAGGATCTGGCAGCAATGATATCCTGGATTACAAGGATGACGACGATAAGGTTTAA

**Protein Sequence:** >VC100405 representing AP\_000142  
Red=Cloning sites Green=Tags

MDVWTILADFSKTRRLVEDSSDGC SGFWRHWFGTPLSRLVYTVKKDYNEEFENLFADCSGLLDSLNLGHQSLFQERVLHSLDFSSPGRRTTAGVAVVFLVDKWSQNTQLSRGYILDFAAMHLWRAVVRQRGQRILNYWLLQPAAPGLLRLHRQTSMLLEEEMRQAMDENPRSGLDPPSEEEED

TRTRRLEQKLI SEEDLAANDILDYKDDDDKV

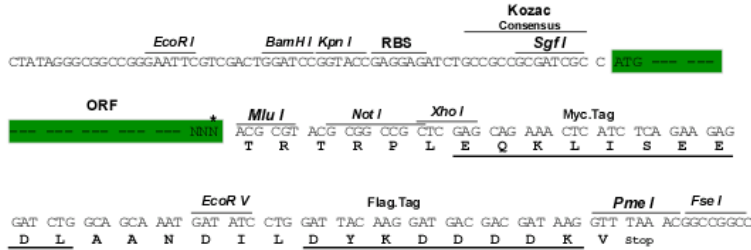
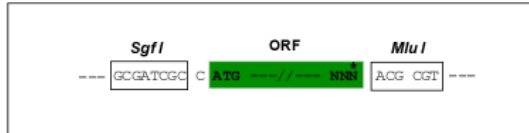
**Restriction Sites:** SgfI-MluI



[View online »](#)

**Cloning Scheme:**

Cloning sites used for ORF Shutting:



\* The last codon before the Stop codon of the ORF

**ACCN:** AC\_000006

**ORF Size:** 546 bp

**OTI Disclaimer:** The molecular sequence of this clone can be viewed by clicking the "ORF Nucleotide Sequence" link above. This sequence represents the NCBI reference after codon optimization for human cell expression, and retaining the same decoded protein sequence. The stop codon in the native sequence was removed to create the in-frame c-terminal fusion with a Myc-DDK tag.

**Components:** The ORF clone is ion-exchange column purified and shipped in a 2D barcoded Matrix tube containing 10ug of transfection-ready, dried plasmid DNA (reconstitute with 100 ul of water).

**Reconstitution Method:**

1. Centrifuge at 5,000xg for 5min.
2. Carefully open the tube and add 100ul of sterile water to dissolve the DNA.
3. Close the tube and incubate for 10 minutes at room temperature.
4. Briefly vortex the tube and then do a quick spin (less than 5000xg) to concentrate the liquid at the bottom.
5. Store the suspended plasmid at -20°C. The DNA is stable for at least one year from date of shipping when stored at -20°C.

**RefSeq:** [AC\\_000006.1](#), [AP\\_000142](#)
**RefSeq ORF:** 546 bp

**MW:** 21.1 kDa