

## Product datasheet for **VC100346**

### L4 (NC\_011203) Virus Tagged ORF Clone

#### Product data:

Product Type:	Expression Plasmids
Product Name:	L4 (NC_011203) Virus Tagged ORF Clone
Tag:	Myc-DDK
Symbol:	L4
Mammalian Cell Selection:	Neomycin
Vector:	pCMV6-Entry (PS100001)
E. coli Selection:	Kanamycin (25 ug/mL)



[View online »](#)

**ORF Nucleotide Sequence:**

>The Viral ORF clone VC100346 represents NCBI reference of YP\_002213782 with codon optimized for human cell expression

Red=Cloning site Blue=ORF Green=Tags(s)

GACGTTGTATACGACTCCTATAGGGCGGCCGGAATTCGTCGACTGGATCCGGTACCGAGGAGATCTGCC  
GCC**CGGATCGCC**

ATGGAGACACAGCCTAGTCTGCCTACCAGCCTGCAAGCACCTCACATCTGGCCCCCTCATCCGACGAGG  
AGGAGTCTCTGACTACGCCTCCCCCTAGCCAGCTACGACCACGTCCACCCTGGACGATGAGGAGGAGGT  
CGACGCTGCCAGGAAATGCAGGCACAAGACAACGTAAAGACAGAGGAGATCGAGGCTGACGTTGAGCAG  
GATCCGGGATATGTGACACCGGCCGAACACCAGGAGGAGCTGAAACGCTTTCTGGATAGAGAGGACGACG  
ATAGGCCCGAGCACAGGCCGATGGCGTCTATCAAGAAGCCGGAATCAGAGACCACGTGGCGGACTACCT  
GACGGGTCTGGGGGTGAGGACGTTCTGCTGAAACATCTCGCTAGACAAAGTATCATTGTGAAGGACGCT  
CTGTTGGACCTCACCGAGGTGCCTATTAGCGTTGAGGAACTGTCCAGGGCTACGAACTGAACCTTTTCA  
GCCCTCAGGTGCCCTAAGAGGCAGCCAATGGCACATGCGAGGCTAACCCAGACTCAACTTCTACCC  
AGCCTTTACTATTCCTGAGGTTCTGGCAACGTACCACATATTCTTCAAGAACCAGAAGATTCCAGTCAGC  
TGTAGAGCCAATAGAACAAGAGCCGATGCTCTGTTGAACCTTGGACCTGGGGCCAGATTGCCAGACATTG  
CATCTTTGGAGGAAGTGCCGAAGATATTCGAGGGTCTGGGCTCAGATGAAACCAGAGCAGCAATGCACT  
GCAACAAGGAGAGAACGCATGGATGAGCATCACAGTGCCTTGTGGAGCTCGAGGGAGACAATGCATAGG  
ATCGCAGTTCTGAAGCGCTCCATCGTGGTGACACATTCGCTTATCCTGCAGTTAACCTGCCTCCCAAAG  
TTATGTCTGCTGCATGGATCACCTGCTTATAAGCGCGCGGCCACTGAGTGAGAATCAGAACATGCA  
GGATCCGGATGCTCCGATGAAGGTAACCTGTGGTCTCTGATGAACAGCTGTCAAGGTGGCTTGGAACT  
AATTCCTCAGAGATCTTGAGGAGCGCGAAAACCTTATGATGGCTCGTTTTGGTCACCCTGGAGCTCG  
AATGCCTCCGCAGGTTTTTACCAGCCAGAGACCCTCCGCAAACCTTGAAGAAAATCTTCACTACACTTT  
CCGCCACGGATTCTGCGCCAAGCCTGCAAGATTTCTAACGTCGAGCTGACTAATCTGGTGTCTTACATG  
GGTATCTGCACGAGAACAGACTCGGCCAATCAGTACTGCATACGACACTGAAGGGCAGGCACGCCGGG  
ATTATATCAGGGACTGCGTATATTTGTACCTTTGTACATCCTGGCAGACCGGCATGGGGGTATGGCAGCA  
GTGTCTGGAAGAGCAAACTGAAAGAGCTTGATAAACTTCTCCAACGGTCTTGAAGGCCTTGTGGACT  
GGATTCGATGAACGCACAGTGGCATCAGACCTGGCTGATATTATTTCTGAACGGCTGCGGGTTACGC  
TGCGGAACGGCTCCCGACTTCATGTCACAGAGTATGCTCAACAATTTCCGGAGCTTTACTGGAAG  
ATCTGGGATCCTGCCCGCACTTGTGCGCCCTCCCTCTGATTTGTGCCACTGACCTACAGAGAATGC  
CCACCCCTCTGTGGTCACTGCTATCTTCCGGCTGGCCAATTATCTGAGCTATCACTCTGATGTGA  
TTGAAGACGTGTCTGGGGATGGATTGCTGGAGTGCCACTGCCGGTGCAACCTCTGTACACCTCATAGGTC  
TCTTGGCTGCAATCCCCAGCTGTGAGTGAAACACAGATTATAGGAACCTTTGAGCTGCAAGGACCCAGA  
TCCAAAGGGGAGGGAAGCAGTCCCGGCCAAGCCTTAACTTACTCTGGGCTGTGGACAAGTGCCTATC  
TGCGGAAATCCACCCGGAAGATTACCACCATATGAAATCCGCTTTTATGAGGACCAGAGTCAACCCACC  
CAAAGTGGAGCTTTCAGCATGCGTTATCACCCAGGAGCCATCCTTGCACAGCTGCAGGCAATCCAGAAG  
TCTAGGCAGGAGTTCCTCTCAAAAAGGTAATGGCGTGTACCTCGATCCACAGACTGGTGAAGAGCTCA  
ACACTAGGTTCCACAGGACGTGCCTAGCCACGGAAGCAGGAGGTGGAAGGCGCTGCTGTTGCTCCCAG  
GGGTACGAGGGGAGACTCGGACAATCCGGTAGAGGTGGTGTGACTTGGCAACCTGGGAGAGGG  
GGGGGCCAGCCTGGAGGCAGACAATTTGGAGGGGTAGGCGCGGTGGAAGAGGAGGTGGACGATCAAAC  
GCAGGCAGACGGTGGTATTGGCGCGGGGATAAACAGGTGCCAAGGCAGCAACATGGATATCATCTCCG  
GTCCGGCTCTGGCGGACCAGCTGCTGCCAGCAG

**ACGCGT**ACGCGGCCGCTCGAGCAGAAAACCTCATCTCAGAAGAGGATCTGGCAGCAATGATATCCTGGATT  
ACAAGGATGACGACGATAAGGTTTAA

Protein Sequence: >VC100346 representing YP\_002213782  
Red=Cloning sites Green=Tags

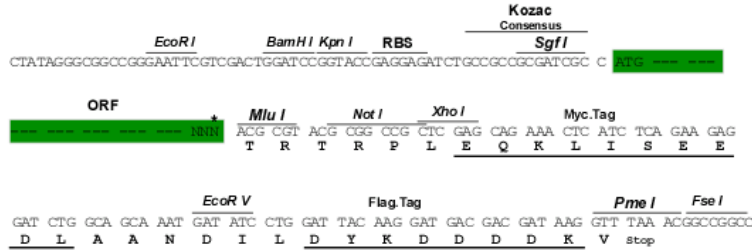
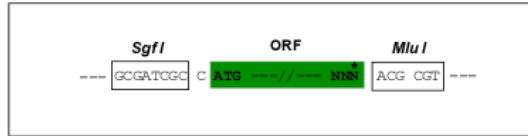
METQPSLPTSLQAPSHLAPSSDEEESLTPPPSPATTTSTLDDEEEVDAAQEMQAQDNVKTEEIEADVEQ  
DPGYVTPAEHQEELKRFLDREDDDRPEHQADGVYQEAGIRDHVADYL TGLGGEDVLLKHLARQSIIVKDA  
LLDLTEVPISVEELSRAYELNLFSPQVPPKRQPNGTCEANPRLNFYPAFTIPEVLATYHIFFKNQKIPVS  
CRANRTRADALLNLGPGARLPDIASLEEVPKIFEGLGSDETRAANALQQGENDMDEHHSALVELEGDNAR  
IAVLKRSIVVTHFAYPAVNLPPKVMSAVMDHLLIKRARPLENQNMQDPDASDEGKPVVSDQLSRWLT  
NSPRDLEERRKLMMAVVLVTVELECLRFFTDPELTRKLEENLHYTFRHGFVRQACKISNVELTNLVSYM  
GILHENRLGQSVLHTTLKGEARRDYIRDCVYLYLCHTWQTMGVWQQCLEEQNLKELDKLLQRSKALWT  
GFDERTVASDLADIIFPERLRVTLRNLPDFMSQSMLNNFRSFI LERSGILPATCCALPSDFVPLTYREC  
PPPLWSHCYLFR LANYLSYHSDVIEDVSGDGLLECHCRCNLCTPHRSLACNPQLLSETQIIGTFELQGPR  
SKGEGSSPGQSLKLTPLGLWTSAYLRKFHPEDYHPYEIRFYEDQSHPPKVELSACVITQGAILAQLQAIQK  
SRQEFLLKKGNGVYLDPQTGEELNTRFPQDVSPRKQVEGA AVAPRGYEGRLGQSGRGGDGR LGQPGRG  
GGQP GGRQFGGRRRGGRRGGRSRRRQTVVIGGGDKQVPRQQHGYHLRSGSGGPAAAQQ

TRTRRLEQKLI SEEDLAANDILDYKDDDDKV

Restriction Sites: Sgfl-Mlul

**Cloning Scheme:**

Cloning sites used for ORF Shutting:



\* The last codon before the Stop codon of the ORF

**ACCN:** NC\_011203

**ORF Size:** 2484 bp

**OTI Disclaimer:** The molecular sequence of this clone can be viewed by clicking the "ORF Nucleotide Sequence" link above. This sequence represents the NCBI reference after codon optimization for human cell expression, and retaining the same decoded protein sequence. The stop codon in the native sequence was removed to create the in-frame c-terminal fusion with a Myc-DDK tag.

**Components:** The ORF clone is ion-exchange column purified and shipped in a 2D barcoded Matrix tube containing 10ug of transfection-ready, dried plasmid DNA (reconstitute with 100 ul of water).

**Reconstitution Method:**

1. Centrifuge at 5,000xg for 5min.
2. Carefully open the tube and add 100ul of sterile water to dissolve the DNA.
3. Close the tube and incubate for 10 minutes at room temperature.
4. Briefly vortex the tube and then do a quick spin (less than 5000xg) to concentrate the liquid at the bottom.
5. Store the suspended plasmid at -20°C. The DNA is stable for at least one year from date of shipping when stored at -20°C.

**RefSeq:** [NC\\_011203.1](#), [YP\\_002213782](#)

**RefSeq ORF:** 2484 bp

**Locus ID:** 6870520

**MW:** 92.3 kDa