

Product datasheet for **VC100163**

DNA binding protein (NC_012959) Virus Tagged ORF Clone

Product data:

Product Type:	Expression Plasmids
Product Name:	DNA binding protein (NC_012959) Virus Tagged ORF Clone
Tag:	Myc-DDK
Symbol:	DNA binding protein
Mammalian Cell Selection:	Neomycin
Vector:	pCMV6-Entry (PS100001)
E. coli Selection:	Kanamycin (25 ug/mL)



[View online »](#)

ORF Nucleotide Sequence:

>The Viral ORF clone VC100163 represents NCBI reference of YP_003038614 with codon optimized for human cell expression
 Red=Cloning site Blue=ORF Green=Tags(s)

GACGTTGTATACGACTCCTATAGGGCGGCCGGAATTCGTCGACTGGATCCGGTACCGAGGAGATCTGCC
 GCC**CGATCGCC**

ATGGCTGGGGTAGTCAGGACGTTAGAAGTTCATGGACAGGGAAGCAACACCACCAGGGGACACGGGA
 GCGCCAGGTATCCCCCTGAACAGGAGAGATCCCCATCACCACCACTCCCACCTCTCCCTACTAAACGGCG
 CAAGTATCAAAGGGTGGGCTCTGGATCTCCGAGGAGGACGTAGTGCCCTGGACAGTCCCCCAAAAAG
 AAACAGCCTCGGAAGACCAAGCATGTGACGAAAGTGAACCCGATGAAGAGATGCCCCAGGAGGACGCTG
 TGATCGTTGGGGTCGGTTTTAGCCAGCCTCCCGTGTGTTGAAGGAAGGCAAGGATGGCAAGCGGATAGT
 CCAGCCCCCACCCTCGCATTCTGAATGTTTGAATCCACTGTCCTTGGCCCTGGTGTCAAGCTGGGAA
 AAGGGTATGGACACAATGAATGTGCTCATGGAACGATATAGAGTGGATCCGGGCTGAGGGACGCCTATA
 AGCTTATGCCGGAACAGACAGAGATTTTTCAGAAGATGTGTCAGACATGGATAAACGAAGAGGCACGGGG
 AATGCAGCTGACGTTACCACCCAAAAAGTTTCTCAACAGTTATGGGGCGGCTGCTCCAAGGCTATATT
 TTTTCTCACTCAGGTATCGCCATAAAGAACTGGGAGTGCACCCGGTAGCGCTCTGTGGGATCACGGATGCG
 CCGAGGTGGAGGGCCAGCTGAAGTGTCTCCATGGCACCCTGATGATCCATAAAGATCACGTAGTGGAAAT
 GGACGTTACAAGTGAAAAATGGGCAGCGGCCCTCAAGGAACAGCCCTCCAAGGCTAAGGTGACTCAGAAC
 CGCTGGGGGAGGTCAAGTGGTCCAGCTCACCTCCCACGACGCCCGCTGCTGTGTGCAGGATGCAGGGTGGC
 GTAACAATCAGTTTTCCGGTAAAAGCTGCGGGCTGTTCTTCTCCGAAGGCGCTAAAGCACAAACAGGCTTT
 TAAACAGATCATGGCCTTCATTAAGCGCTGACCCAAATATGCAGCGCGGCGCCGGCATGATGCTCATG
 CCTGTGCATTGTGAGTGCAACCAAGCCTCACAGCGTGCCTTCCCTTGAAGACAGCTGTGCAAGATGA
 CCCCTTCGGGCTTAGCAACGCAGAAAGACCTTGACAAAGACCAGATAAGTGACAAAATCCGTGCTGGCATC
 CGTGAAGTATCCCTCCCTGATGGTCTTCCAGTGTGCAACCCGGTCTACCGAATTCCTGGGCTCAAAGT
 ACGGGGCTAATTGCGACTTCAAGATCAGCGCCCCGACATGCTCGGGGCTCTGCAGATGAGCCGGAGAA
 TGTGGAGCGAGACCTTCCCGAAATCGCGGTTCTAAGCTCGTTATCCCGAATTCAGTGGCAACCAAAA
 ATACCAGTACAGGAACGTCGCCCTCCCTCCGCTGCCACAACGATGAGCGGGAGAATCCTTTCGATTTT

ACGCGTACGCGGCGGCTCGAGCAGAAACTCATCTCAGAAGAGGATCTGGCAGCAAATGATATCCTGGATT
 ACAAGGATGACGACGATAAGGTTTAA

Protein Sequence:

>VC100163 representing YP_003038614
 Red=Cloning sites Green=Tags

MAGGSQDVRRFMDREATPPRGHGSARYPPEQERSPPPLPPLPTKRRKYQRVGSGSSEEDVVPLDSPPKK
 KQPRKTKHVTKVNPDEEMPQEDAVIVGVGFSQPPVLLKEGKDGKRIVQPATPGILNVCNPLSLPLVSSWE
 KGMDTMNVLMERYRVDGLRDAYKLMPEQTEIFQKMCQTWINEEARGMQLTFTTQKSFSTVMGRLLQGYI
 FSHSGIAHKNWECTGSALWDHGCAEVEGQLKCLHGTVMIHKDHVEMDVTSENGQRALKEQPSKAKVTQN
 RWGRSVVQLTSHDARCCVQDAGCGNQNFSKSCGLFFSEGAQAQAFKQIMAFIKALYPNMQRGAGMMLM
 PVHCECNHKPHSVPLGRQLCKMTPFGLSNAEDLDKDQISDKSVLASVKYPSLMVFQCCNPVYRNSRAQS
 TGPNCDFKISAPDMLGALQMSRRMWSSETFPEIAVPKLVIPEFKWQPKYQYRNVALPSAAHNDERENPFDF

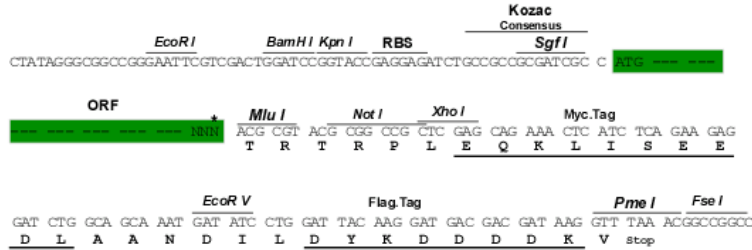
TRTRRLEQKLISEEDLAANDILDYKDDDDKV

Restriction Sites:

Sgfl-MluI

Cloning Scheme:

Cloning sites used for ORF Shuttling:


ACCN: NC_012959

ORF Size: 1470 bp

OTI Disclaimer: The molecular sequence of this clone can be viewed by clicking the "ORF Nucleotide Sequence" link above. This sequence represents the NCBI reference after codon optimization for human cell expression, and retaining the same decoded protein sequence. The stop codon in the native sequence was removed to create the in-frame c-terminal fusion with a Myc-DDK tag.

Components: The ORF clone is ion-exchange column purified and shipped in a 2D barcoded Matrix tube containing 10ug of transfection-ready, dried plasmid DNA (reconstitute with 100 ul of water).

Reconstitution Method:

1. Centrifuge at 5,000xg for 5min.
2. Carefully open the tube and add 100ul of sterile water to dissolve the DNA.
3. Close the tube and incubate for 10 minutes at room temperature.
4. Briefly vortex the tube and then do a quick spin (less than 5000xg) to concentrate the liquid at the bottom.
5. Store the suspended plasmid at -20°C. The DNA is stable for at least one year from date of shipping when stored at -20°C.

RefSeq: [NC_012959.1](#), [YP_003038614](#)
RefSeq ORF: 1470 bp

MW: 54.9 kDa