

Product datasheet for **VC100158**

pV (NC_012959) Virus Tagged ORF Clone

Product data:

Product Type:	Expression Plasmids
Product Name:	pV (NC_012959) Virus Tagged ORF Clone
Tag:	Myc-DDK
Symbol:	pV
Mammalian Cell Selection:	Neomycin
Vector:	pCMV6-Entry (PS100001)
E. coli Selection:	Kanamycin (25 ug/mL)
ORF Nucleotide Sequence:	>The Viral ORF clone VC100158 represents NCBI reference of YP_003038609 with codon optimized for human cell expression Red=Cloning site Blue=ORF Green=Tags(s)

GACGTTGTATACGACTCCTATAGGGCGGCCGGGAATTCGTCGACTGGATCCGGTACCGAGGAGATCTGCC
GCC**CGATCGCC**

ATGTCTAAACGCAAAATCAAGGAGGAGATGCTTCAGGTGGTAGCTCCAGAAATCTACGGCCTCCAGCTG
ACCAGAAGCCTCGGAAGATAAAGAGAGTAAAGAAAAAGATGAAGTAGGCGAGGGAGCCGTTGAGTTTGT
ACGGGAGTTTGTCCACGACGCCGCGTGAATTGAAAAGGCCGACGGTGCAGCGGTTCTGAGGCCCGGA
ACTGCCGTTGTGTTACACCCGGCAACGGTCTCTGTTAGGTCTAAGCGCTCTTACGATGAAGTGTACG
GCGATAATGATATCCTGGACCAGGCGGCCGAACGCGCGGGAATTCGCGTACGGTAAACGCTCTCGGGA
GGAGGAGCTTATCAGTCTGCCCTTGATGAATCTAACCCGACTCCGAGTCTCAAGCCAGTGACCCTCCAG
CAGGTGCTGCCACAGGCCGTTGTTGCTGCCATCCCGGGCGTAAAAAGGAAGGCGAAAAATATGTACCCAA
CTATGCAATAATGGTTCCTAAGCGGCGCCGCTAGAAGATGTCCTCGACACTGTTAAGATGGATGTGCA
ACCTGAGGTTAAAGTTAGACCGATTAAGCAGGTTGCCCCAGGCCCTCGGAGTACAGACCGTGGACATCCAA
ATACCGACGGATATGGATGTGGATAAAAAACCCAGCACAAGCATCGAGGTCCAGACGGACCCTGGCTGC
CCGCTCCACAGCCTTTACAAGTACTGCCACGGAACCGAGTCGCCGAAGGAGTGGGGACCGGCCAACCG
ATTGATGCCCAATTACGTTCTTACCCAAGCATATCCCTACCCGGGGTACCGCGCACTAGGTACTAT
GCATCAAGAAGAAGACCGCAGGAAAACGGCGAAGACGGACCACACCGCGGAGGCTGGCCCCCGCCC
GAGTCCCGCGTGAACAACGACAGGGTCTGAAGCTTCTGTTCTGCCAACAGTGCGGTACCATCCGAGTAT
TCTT

ACGCGTACGCGGCCGCTCGAGCAGAAACTCATCTCAGAAGAGGATCTGGCAGCAAATGATATCCTGGATT
ACAAGGATGACGACGATAAGGTTTAA



[View online »](#)

Protein Sequence: >VC100158 representing YP_003038609
 Red=Cloning sites Green=Tags

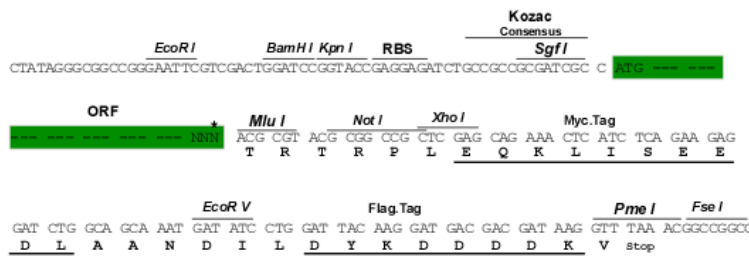
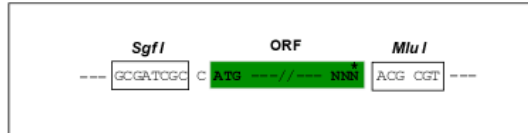
MSKRKIKEEMLQVVAPEIYGPPADQKPRKIKRVKKKDEVGEGAVEFVREFAPRRRVNWKGRRVQRVLRPG
 TAVVFTPGERSVRSKRSYDEVYGDNDILDQAERAGEFAYGKRSREELISLPLDESNPSPSLKPVTLQ
 QVLPQAVLLPSRGVVKREGENMYPTMQIMVPKRRRVEDVLDTVKMDVEPEVKVVRPIKQVAPGLGVQTVDIQ
 IPTDMDVDKKPSTSIEVQTDPLPASTAFTSTATEPSRRRRWGPANRLMPNYVLHPSIIPTPGYRGTRY
 ASRRRPAGKRRRRTRRRRLAPARVRRVTTRQGRSFVLPVRYHPSIL

TRTRRLEQKLISEEDLAANDILDYKDDDDKV

Restriction Sites: SgfI-MluI

Cloning Scheme:

Cloning sites used for ORF Shuttling:



* The last codon before the Stop codon of the ORF

ACCN: NC_012959

ORF Size: 984 bp

OTI Disclaimer: The molecular sequence of this clone can be viewed by clicking the "ORF Nucleotide Sequence" link above. This sequence represents the NCBI reference after codon optimization for human cell expression, and retaining the same decoded protein sequence. The stop codon in the native sequence was removed to create the in-frame c-terminal fusion with a Myc-DDK tag.

Components: The ORF clone is ion-exchange column purified and shipped in a 2D barcoded Matrix tube containing 10ug of transfection-ready, dried plasmid DNA (reconstitute with 100 ul of water).

- Reconstitution Method:**
1. Centrifuge at 5,000xg for 5min.
 2. Carefully open the tube and add 100ul of sterile water to dissolve the DNA.
 3. Close the tube and incubate for 10 minutes at room temperature.
 4. Briefly vortex the tube and then do a quick spin (less than 5000xg) to concentrate the liquid at the bottom.
 5. Store the suspended plasmid at -20°C. The DNA is stable for at least one year from date of shipping when stored at -20°C.

RefSeq: NC_012959.1, YP_003038609
RefSeq ORF: 984 bp
MW: 37.6 kDa