

Product datasheet for **VC100047**

100K (AC_000007) Virus Tagged ORF Clone

Product data:

Product Type:	Expression Plasmids
Product Name:	100K (AC_000007) Virus Tagged ORF Clone
Tag:	Myc-DDK
Symbol:	100K
Mammalian Cell Selection:	Neomycin
Vector:	pCMV6-Entry (PS100001)
E. coli Selection:	Kanamycin (25 ug/mL)



[View online »](#)

ORF Nucleotide Sequence:

>The Viral ORF clone VC100047 represents NCBI reference of AP_000178 with codon optimized for human cell expression

Red=Cloning site Blue=ORF Green=Tags(s)

GACGTTGTATACGACTCCTATAGGGCGGCCGGGAATTCGTCGACTGGATCCGGTACCGAGGAGATCTGCC
GCC**CGCATCGCC**

ATGGAATCTGTGAAAAAGAAGATAGTCTGACTGCTCCATTTCGAGTTCGCAACCACCGCCAGTACTGATG
CCGCTAATGCACCCACAACCTTTCCCGTGGAGGCCACCCCTTGAGGAAGAGGAAGTTATAATTGAACA
GGATCCTGGGTTTGTAGCGAGGACGATGAAGATCGGTCCGTACCCACAGAAGACAAGAAGCAGGACCAG
GACGATGCCGAGGCCAATGAGGAGCAGGTGGGAGAGGCGACCAGCGGCACGGTACTACCTGGATGTTG
GCGATGATGTCTTGTGAAGCATCTGCAGCGCCAGTGTGCGATAATTTGTGATGCTTTCAGGAACGAAG
CGATGTCCATTGGCCATCGGGACGTTCCCTGGCATAACGAGCGCCACCTGTTACGCCCTAGAGTGCTT
CCCAAGCGACAGGAGAACGGGACTTGTGAGCCAAACCCGGGCTGAATTTCTACCCGGTCTTCGCCGTTT
CTGAAGTCTTGAACCTATCACATATTCTCCAGAATTGCAAGATCCCTCTCAGCTGTAGACCCAACAG
ATCAAGAGCCGATAAACAGCTCGCTCTGCGCCAGGGGGCTGTAATTCGGATATCGCAAGTCTGGACGAG
GTCCCTAAGATCTTCGAGGGTCTGGGAAGAGATGAAAAGCGGGCCGAAACGCCCTTCAGCAGGAGAATA
GCGAAAATGAGTCCCATTGCGGGGTCTTGTGAGCTGGAAGGAGACAACGCACGACTGGCAGTCCCTCAA
ACGGAGCATCGAGGTGACCCACTTCGCCTACCCTGCACTGAATCTGCCTCCCAAGGTAATGAGCAGAGTG
ATGTCTGAACTCATCGTTCGAGAGCCAGACCATTGGAACGCGACGCTAACCTGCAGGAACAGACTGAGG
AAGGGCTGCCAGCCGTGCGCGATGAACAATTGGCCAGGTGGCTTGTGACTGTGCAACTGGAATGTATGAGAG
GGAAAGACGAAAGCTCATGATGGCCGCCGTGCTTGTGACTGTGCAACTGGAATGTATGAGAGATCTTT
GCAGATCCAGAAATGCAGCGAAAACCTCGAAGAACTCTCCATTATACATTTGCCAGGGCTATGTGAGGC
AAGCCTGTAAAAATTTCCAATGTGGAGCTGTGCAATCTGGTGTCTTATCTCGGGATCTTGCATGAAAATAG
GCTCGGCCAGAACGTAAGTACTGCACTCTACTTTGAAAGGGGAGGCTAGACGAGATTATGTGCGAGATTGCGT
TATCTCTTCTGTGTACTACTTGGCAAACCTGCAATGGGGGTATGGCAGCAATGCTTGGAGGAACGCAACC
TGAAGGAACTGCAAAAGCTCCTAAGCAGAACTTGAAGGATCTGTGGACCGCTTCAATGAAAGAAGTGT
GGCCGCTCATCTGGCGGATATTATCTTTCCGAGAGACTGCTCAAAACCTGCAACAGGGGCTGCCCGAT
TTCACAAGCCAGAGTATGCTCCAGAATTTCCGGAACCTTATTCTGGAGCGATCTGGCATCTGCCAGCTA
CATGCTGCGCCCTTCTAGCGACTTCGTCCTCAATCAAGTACCGGGAGTGGCCACCACCACCTGTGGGGCCA
CTGTTATCTGCTGCGAGTTGGCGAACTACCTCGCATACCATTCCGATATAATGGAAGATGTTAGCGGTGAT
GGACTGCTTGAATGCCATTGTGCTGCAATCTGTGTACACCACATCGGTCTCTGGTTTGCAACTCACAGC
TGCTCTCCGAATCACAGATTATAGGCACATTGCAATTGCAAGGACCTAGCCCCGACGAAAAGTCTGCAGC
ACCAGGTCTGAAGCTCACCCAGGGCTTTGGACATCCGCCTATCTGCGGAAATTCGTACCAGAAGATTAC
CACGCTCATGAGATTAGGTTCTATGAGGATCAGTACGACCCCCCAATGCTGAACTGACAGCCTGCGTGA
TCACACAAGGGCATATCCTGGGGCAACTCCAAGCAATAAACAAAGCCGACAGGAGTTTCTGCTCAGGAA
GGGAAGAGGAGTTTATCTTGACCCACAGAGTGGGAGGAACTGAATCCTATCCCCCACCTCCCCAACCT
TATCAACAGCCAAGAGCCCTGGCAAGTCAGGACGGAACACAGAAAGAGGCTGCAGCAGCCGCCGCTGCGA
CGCATGGTAGGGGAGGAATCCTTGGCCAGAGTGAAGAGGGGGCTTTGGCAGAGGTGGGGGTGACGACGG
CCGCCTTGGGCAGCCACGAGATCCTTCAGGGCCGAGAGGTGTGAGACGGAACACGGTACATTTGGGC
CGCATACCTTTGCCGGTCCCCGAAATAGGAAATAGATCTCAGCATAGGTACAACCTGCGCTCAAGCG
GCGCGGCCGGAACCGGTGTTACCTACCCAGCCT

ACGCGTACGCGGCCGCTCGAGCAGAAAACCTATCTCAGAAGAGGATCTGGCAGCAATGATATCTGGATT
ACAAGGATGACGACGATAAGGTTTAA

Protein Sequence: >VC100047 representing AP_000178
 Red=Cloning sites Green=Tags

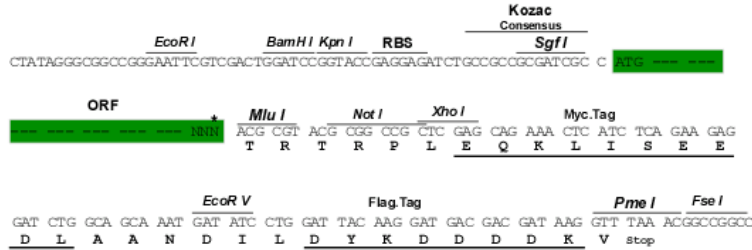
MESVEKEDSLTAPFEFATTASTDAANAPTTFPVEAPPLEEEEEVIEQDPGFVSEDEDRSVPTEDKKQDQ
 DDAEANEQVGRGDQRHGDYLDVGDDVLLKHLQRQCAIICDALQERSDVPLAIADVSLAYERHLFSRVP
 PKRQENGTCENPRLNFYPVFAVPEVLATYHIFQNCIPLSCRANRSRADKQLALRQGAVIPDIASLDE
 VPKIFEGLGRDEKRAANALQQENSENESHCGVLVELEGDNARLAVLKRSIEVTHFAYPALNLPKVMSTV
 MSELIVRRARPLERDANLQEQTTEGLPAVGDEQLARWLETREPADLEERRKLMMAAVLVTVELECMQRFF
 ADPEMQRKLEETLHYTFRQGYVRQACKISNVELCNLVSYLGILHENRLGQNVLHSTLKGEARRDYVRDCV
 YLFLCYTWQTAMGVWQQCLEERNLKEKLLKQNLKDLWTFNERSVAAHLADIIFPERLLKTLQQGLPD
 FTSQSMQNFILERSGILPATCCALPSDFVPIKYRECPPPLWGHCYLLQLANYLAYHSDIMEDVSGD
 GLLLECHCRCNLCTPHRSLVCNSQLLSESQIIGTFELQGSPDEKSAAPGLKLTPLWTSAYLRKFVPEDY
 HAHEIRFYEDQSRPPNAELTACVITQGHILGQLQAINKARQEFLLRKGRGVYLDPQSGEELNPIPPPPQP
 YQQPRALASQDGTQKEAAAAAATHGRGGILGQSGRGGFGRGGGDDGRLGQPRRSFRGRRGVRNTVTLG
 RIPLAGAPEIGNRSQHRYNLRSSGAAGTACSPTQP

TRTRRLEQKLISEEDLAANDILDYKDDDDKV

Restriction Sites: Sgfl-Mlul

Cloning Scheme:

Cloning sites used for ORF Shuttling:



* The last codon before the Stop codon of the ORF

ACCN: AC_000007

ORF Size: 2415 bp

OTI Disclaimer: The molecular sequence of this clone can be viewed by clicking the "ORF Nucleotide Sequence" link above. This sequence represents the NCBI reference after codon optimization for human cell expression, and retaining the same decoded protein sequence. The stop codon in the native sequence was removed to create the in-frame c-terminal fusion with a Myc-DDK tag.

Components: The ORF clone is ion-exchange column purified and shipped in a 2D barcoded Matrix tube containing 10ug of transfection-ready, dried plasmid DNA (reconstitute with 100 ul of water).

Reconstitution Method:

1. Centrifuge at 5,000xg for 5min.
2. Carefully open the tube and add 100ul of sterile water to dissolve the DNA.
3. Close the tube and incubate for 10 minutes at room temperature.
4. Briefly vortex the tube and then do a quick spin (less than 5000xg) to concentrate the liquid at the bottom.
5. Store the suspended plasmid at -20°C. The DNA is stable for at least one year from date of shipping when stored at -20°C.

RefSeq: [AC_000007.1, AP_000178](#)

RefSeq ORF: 2415 bp

UniProt ID: [P03254](#)

MW: 90.1 kDa