

Product datasheet for **UM900006**

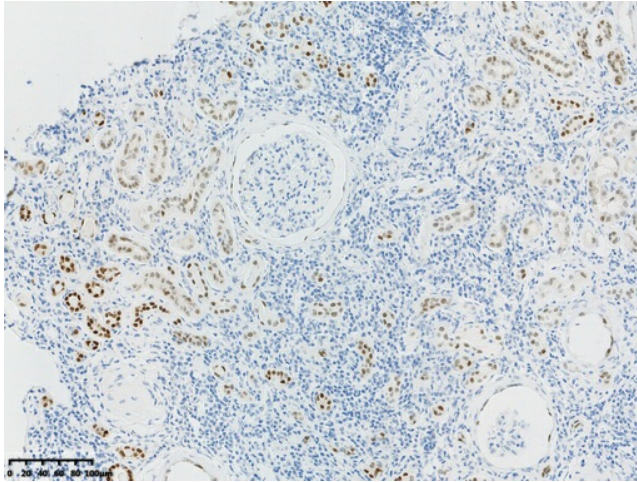
PAX2 Rabbit Monoclonal Antibody [Clone ID: UMAB301]

Product data:

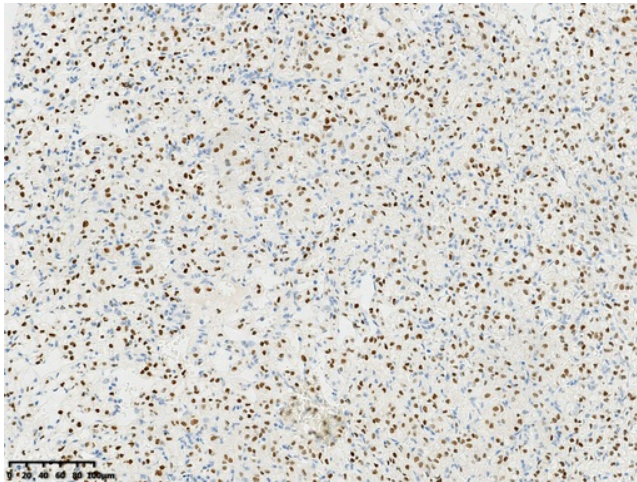
Product Type:	Primary Antibodies
Clone Name:	UMAB301
Applications:	IHC
Recommended Dilution:	IHC 1:250
Reactivity:	Human
Host:	Rabbit
Isotype:	IgG
Clonality:	Monoclonal
Immunogen:	Human recombinant protein fragment of human PAX2 (NP_003978) produced in E.coli.
Formulation:	PBS (pH 7.3) containing 1% BSA, 50% glycerol and 0.02% sodium azide.
Concentration:	1.00mg/ml
Purification:	Purified from cell culture supernatant by affinity chromatography(protein A/G)
Conjugation:	Unconjugated
Predicted Protein Size:	44.5 kDa
Gene Name:	paired box 2
Database Link:	NP_003978 Entrez Gene 5076 Human Q02962
Background:	PAX2 encodes paired box gene 2, one of many human homologues of the Drosophila melanogaster gene prd. The central feature of this transcription factor gene family is the conserved DNA-binding paired box domain. PAX2 is believed to be a target of transcriptional suppression by the tumor suppressor gene WT1. Mutations within PAX2 have been shown to result in optic nerve colobomas and renal hypoplasia. Alternative splicing of this gene results in multiple transcript variants. [provided by RefSeq, Dec 2014]
Synonyms:	FSGS7; PAPRS
Protein Families:	Druggable Genome



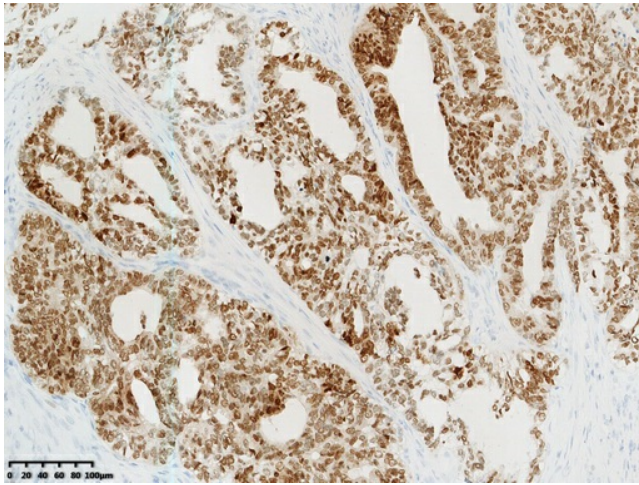
[View online »](#)

Product images:

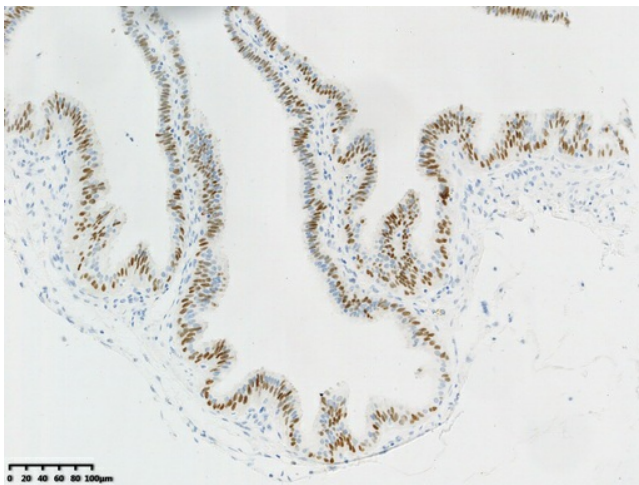
IHC staining of FFPE human kidney tissue within the normal limits using anti-PAX2 rabbit monoclonal antibody (UM900006) and Polink-2 HRP polymer detection kit ([D22-110]). Heat-induced epitope retrieval by EDTA solution buffer pH 9.0 ([B06C-50]) at 120°C for 3 min. The brown stain indicates positive stain, blue is the counter stain.



IHC staining of FFPE human renal cancer tissue using anti-PAX2 rabbit monoclonal antibody (UM900006) and Polink-2 HRP polymer detection kit ([D22-110]). Heat-induced epitope retrieval by EDTA solution buffer pH 9.0 ([B06C-50]) at 120°C for 3 min. The brown stain indicates positive stain, blue is the counter stain.



IHC staining of FFPE human endometrial carcinoma tissue using anti-PAX2 rabbit monoclonal antibody (UM900006) and Polink-2 HRP polymer detection kit ([D22-110]). Heat-induced epitope retrieval by EDTA solution buffer pH 9.0 ([B06C-50]) at 120°C for 3 min. The brown stain indicates positive stain, blue is the counter stain.



IHC staining of FFPE human fallopian tube tissue with in the normal limits using anti-PAX2 rabbit monoclonal antibody (UM900006) and Polink-2 HRP polymer detection kit ([D22-110]). Heat-induced epitope retrieval by EDTA solution buffer pH 9.0 ([B06C-50]) at 120°C for 3 min. The brown stain indicates positive stain, blue is the counter stain.