

## Product datasheet for **UM900005**

### STAT6 Rabbit Monoclonal Antibody [Clone ID: UMAB300]

#### Product data:

Product Type:	Primary Antibodies
Clone Name:	UMAB300
Applications:	IHC
Recommended Dilution:	IHC 1:1000, WB 1:5000
Reactivity:	Human
Host:	Rabbit
Isotype:	IgG
Clonality:	Monoclonal
Immunogen:	Synthetic peptide (the amino acid sequence is considered to be commercially sensitive) within Human STAT6 (NP_003144). The exact sequence is proprietary.
Formulation:	PBS (pH 7.3) containing 1% BSA, 50% glycerol and 0.02% sodium azide.
Concentration:	1.00mg/ml
Purification:	Purified from cell culture supernatant by affinity chromatography(protein A/G)
Conjugation:	Unconjugated
Predicted Protein Size:	94.2 kDa
Gene Name:	signal transducer and activator of transcription 6
Database Link:	<a href="#">NP_003144</a> <a href="#">Entrez Gene 6778 Human</a> <a href="#">P42226</a>
Background:	The protein encoded by this gene is a member of the STAT family of transcription factors. In response to cytokines and growth factors, STAT family members are phosphorylated by the receptor associated kinases, and then form homo- or heterodimers that translocate to the cell nucleus where they act as transcription activators. This protein plays a central role in exerting IL4 mediated biological responses. It is found to induce the expression of BCL2L1/BCL-X(L), which is responsible for the anti-apoptotic activity of IL4. Knockout studies in mice suggested the roles of this gene in differentiation of T helper 2 (Th2) cells, expression of cell surface markers, and class switch of immunoglobulins. Alternative splicing results in multiple transcript variants.[provided by RefSeq, May 2010]



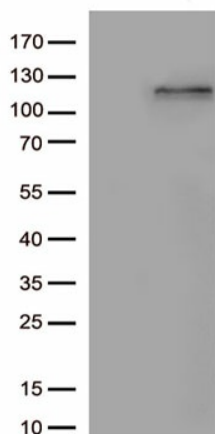
[View online »](#)

**Synonyms:** D12S1644; IL-4-STAT; STAT6B; STAT6C

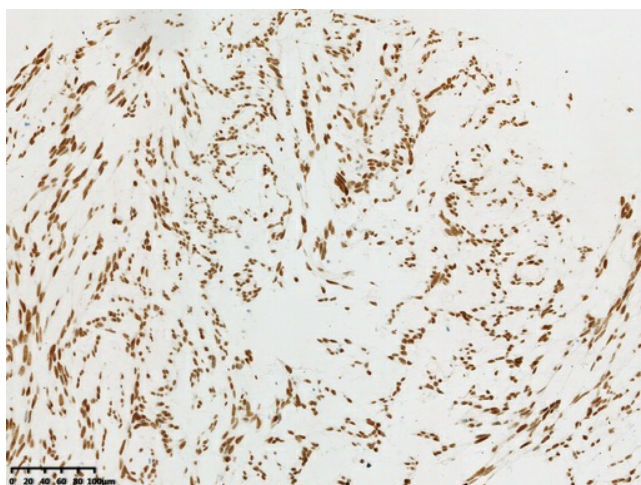
**Protein Families:** Druggable Genome, ES Cell Differentiation/IPS, Stem cell relevant signaling - DSL/Notch pathway, Stem cell relevant signaling - JAK/STAT signaling pathway, Transcription Factors

**Protein Pathways:** Jak-STAT signaling pathway

### Product images:



HEK293T cells were transfected with the pCMV6-ENTRY control (Left lane) or pCMV6-ENTRY STAT6 ([RC210065], Right lane) cDNA for 48 hrs and lysed. Equivalent amounts of cell lysates (5 ug per lane) were separated by SDS-PAGE and immunoblotted with anti-STAT6.(1:5000)



IHC staining of FFPE human solitary fibrous tumor tissue using anti-STAT6 rabbit monoclonal antibody (UM900005) and Polink-2 HRP polymer detection kit ([D22-110]). Heat-induced epitope retrieval by EDTA solution buffer pH 8.0 ([B04C-100]) at 120°C for 3 min. The brown stain indicates positive stain, blue is the counter stain.