

Product datasheet for **UM900003**

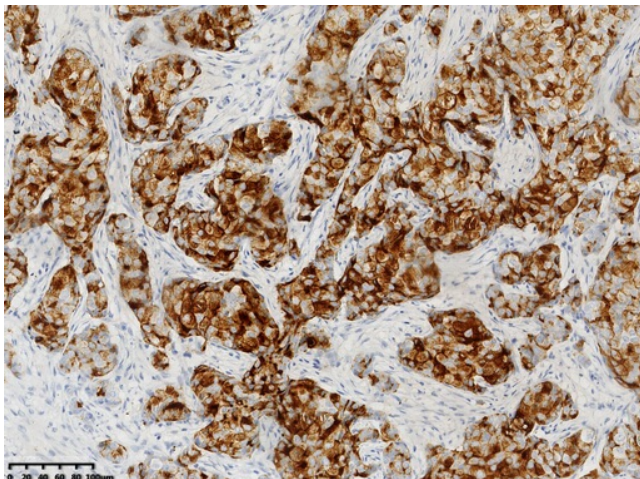
GCDFP 15 (PIP) Rabbit Monoclonal Antibody [Clone ID: UMAB298]

Product data:

Product Type:	Primary Antibodies
Clone Name:	UMAB298
Applications:	IHC
Recommended Dilution:	IHC 1:2400
Reactivity:	Human
Host:	Rabbit
Isotype:	IgG
Clonality:	Monoclonal
Immunogen:	Synthetic peptide (the amino acid sequence is considered to be commercially sensitive) within Human GCDFP-15(PIP) (NP_002643). The exact sequence is proprietary.
Formulation:	PBS (pH 7.3) containing 1% BSA, 50% glycerol and 0.02% sodium azide.
Concentration:	1.00mg/ml
Purification:	Purified from cell culture supernatant by affinity chromatography(protein A/G)
Conjugation:	Unconjugated
Predicted Protein Size:	16.6 kDa
Gene Name:	prolactin induced protein
Database Link:	NP_002643 Entrez Gene 5304 Human P12273
Background:	Belongs to the PIP family. [UniProtKB/Swiss-Prot Function]
Synonyms:	GCDFP-15; GCDFP15; GPIP4
Protein Families:	Secreted Protein



[View online »](#)

Product images:

IHC staining of FFPE human breast cancer tissue using anti-GCDFP-15(PIP) rabbit monoclonal antibody (UM900003) and Polink-2 HRP polymer detection kit ([D22-110]). Heat-induced epitope retrieval by EDTA solution buffer pH 8.0 ([B04C-100]) at 120°C for 3 min. The brown stain indicates positive stain, blue is the counter stain.