

Product datasheet for **UM900002**

Glutamine Synthetase (GLUL) Rabbit Monoclonal Antibody [Clone ID: UMAB297]

Product data:

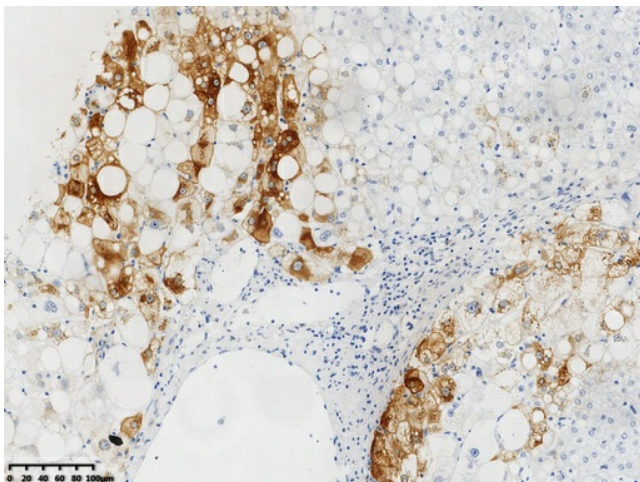
| | |
|-------------------------|--|
| Product Type: | Primary Antibodies |
| Clone Name: | UMAB297 |
| Applications: | IHC |
| Recommended Dilution: | IHC 1:250 |
| Reactivity: | Human |
| Host: | Rabbit |
| Isotype: | IgG |
| Clonality: | Monoclonal |
| Immunogen: | Synthetic peptide (the amino acid sequence is considered to be commercially sensitive) within Human GS(GluI) (NP_001028228). The exact sequence is proprietary. |
| Formulation: | PBS (pH 7.3) containing 1% BSA, 50% glycerol and 0.02% sodium azide. |
| Concentration: | 1.00mg/ml |
| Purification: | Purified from cell culture supernatant by affinity chromatography (protein A/G) |
| Conjugation: | Unconjugated |
| Predicted Protein Size: | 42.1 kDa |
| Gene Name: | glutamate-ammonia ligase |
| Database Link: | NP_001028228 Entrez Gene 2752 Human P15104 |
| Background: | The protein encoded by this gene belongs to the glutamine synthetase family. It catalyzes the synthesis of glutamine from glutamate and ammonia in an ATP-dependent reaction. This protein plays a role in ammonia and glutamate detoxification, acid-base homeostasis, cell signaling, and cell proliferation. Glutamine is an abundant amino acid, and is important to the biosynthesis of several amino acids, pyrimidines, and purines. Mutations in this gene are associated with congenital glutamine deficiency, and overexpression of this gene was observed in some primary liver cancer samples. There are six pseudogenes of this gene found on chromosomes 2, 5, 9, 11, and 12. Alternative splicing results in multiple transcript variants. [provided by RefSeq, Dec 2014] |


[View online »](#)

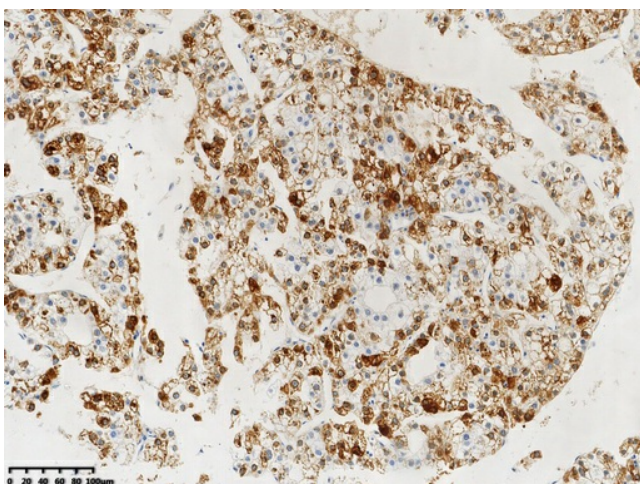
Synonyms: GLNS; GS; PIG43; PIG59

Protein Pathways: Alanine, aspartate and glutamate metabolism, Arginine and proline metabolism, Metabolic pathways, Nitrogen metabolism

Product images:



IHC staining of FFPE human liver tissue with in the normal limits using anti-GS(Glul) rabbit monoclonal antibody (UM900002) and Polink-2 HRP polymer detection kit ([D22-110]). Heat-induced epitope retrieval by EDTA solution buffer pH 8.0 ([B04C-100]) at 120°C for 3 min. The brown stain indicates positive stain, blue is the counter stain.



IHC staining of FFPE human liver cancer tissue using anti-GS(Glul) rabbit monoclonal antibody (UM900002) and Polink-2 HRP polymer detection kit ([D22-110]). Heat-induced epitope retrieval by EDTA solution buffer pH 8.0 ([B04C-100]) at 120°C for 3 min. The brown stain indicates positive stain, blue is the counter stain.