

Product datasheet for **UM870177**

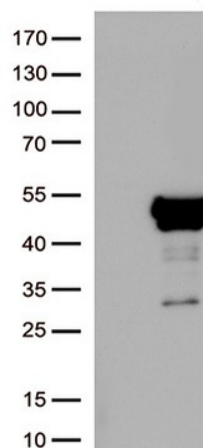
NSE (ENO2) Mouse Monoclonal Antibody [Clone ID: UMAB287]

Product data:

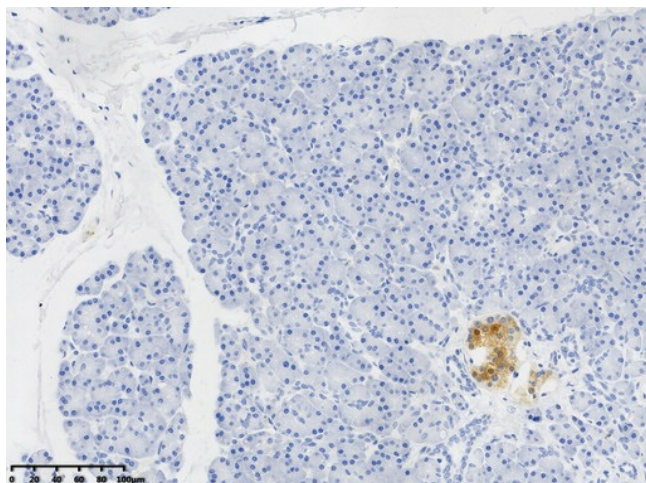
| | |
|--------------------------------|--|
| Product Type: | Primary Antibodies |
| Clone Name: | UMAB287 |
| Applications: | IHC, WB |
| Reactivity: | Mouse, Rat |
| Host: | Mouse |
| Isotype: | IgG2b |
| Clonality: | Monoclonal |
| Immunogen: | Human recombinant protein fragment corresponding to amino acids 188-293 of human NSE (NP_001966) produced in E.coli. |
| Formulation: | PBS (PH 7.3) containing 1% BSA, 50% glycerol and 0.02% sodium azide. |
| Concentration: | 1 mg/ml |
| Purification: | Purified from mouse ascites fluids or tissue culture supernatant by affinity chromatography (protein A/G) |
| Conjugation: | Unconjugated |
| Predicted Protein Size: | 47.3 kDa |
| Gene Name: | Homo sapiens enolase 2 (ENO2), mRNA. |
| Database Link: | NP_001966 Entrez Gene 13807 Mouse Entrez Gene 24334 Rat P09104 |
| Background: | This gene encodes one of the three enolase isoenzymes found in mammals. This isoenzyme, a homodimer, is found in mature neurons and cells of neuronal origin. A switch from alpha enolase to gamma enolase occurs in neural tissue during development in rats and primates. [provided by RefSeq, Jul 2008] |
| Synonyms: | HEL-S-279; NSE |
| Protein Pathways: | Glycolysis / Gluconeogenesis, Metabolic pathways, RNA degradation |



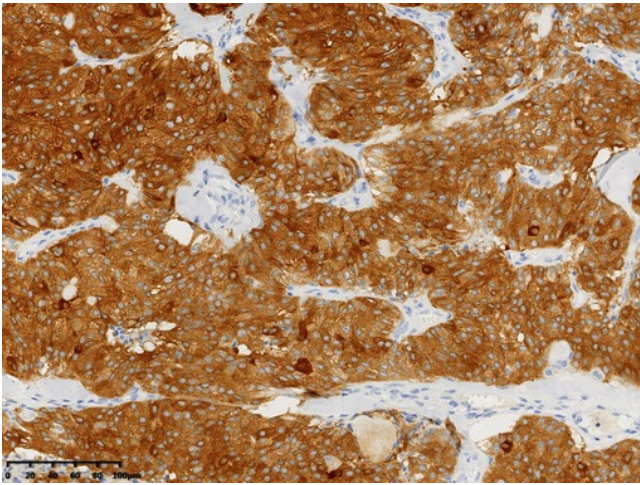
[View online »](#)

Product images:

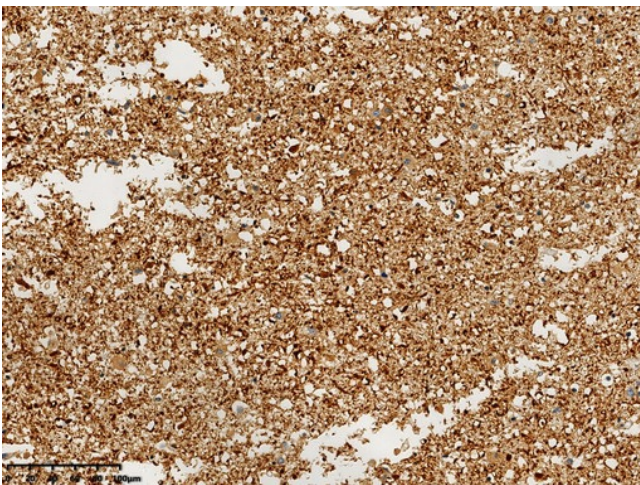
HEK293T cells were transfected with the pCMV6-ENTRY control (Cat# [PS100001], Left lane) or pCMV6-ENTRY NSE (ENO2) (Cat# [RC201085], Right lane) cDNA for 48 hrs and lysed. Equivalent amounts of cell lysates (5 ug per lane) were separated by SDS-PAGE and immunoblotted with anti-NSE(ENO2) antibody (Cat# [UM800177]) (1:1000).



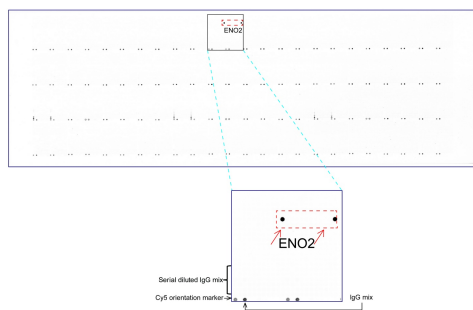
Immunohistochemical staining of paraffin-embedded Human pancreas tissue within the normal limits using anti-NSE (ENO2) mouse monoclonal antibody. (Heat-induced epitope retrieval by 1mM EDTA in 10mM Tris buffer (pH8.0) at 120°C for 3 min, [UM800177]) (1:15000)



Immunohistochemical staining of paraffin-embedded Carcinoma of Human thyroid tissue using anti-NSE (ENO2) mouse monoclonal antibody.(Heat-induced epitope retrieval by 1mM EDTA in 10mM Tris buffer (pH8.0) at 120°C for 3 min, [UM800177]) (1:15000)



Immunohistochemical staining of paraffin-embedded Human adult brain tissue within the normal limits using anti-NSE (ENO2) mouse monoclonal antibody.(Heat-induced epitope retrieval by 1mM EDTA in 10mM Tris buffer (pH8.0) at 120 oC for 3 min, [UM800177]) (1:15000)



OriGene overexpression protein microarray chip was immunostained with UltraMAB anti-NSE (ENO2) mouse monoclonal antibody ([UM800177]). The positive reactive proteins are highlighted with two red arrows in the enlarged subarray. All the positive controls spotted in this subarray are also labeled for clarification. (1:100)