

Product datasheet for **UM870149**

MSH2 Mouse Monoclonal Antibody [Clone ID: UMAB259]

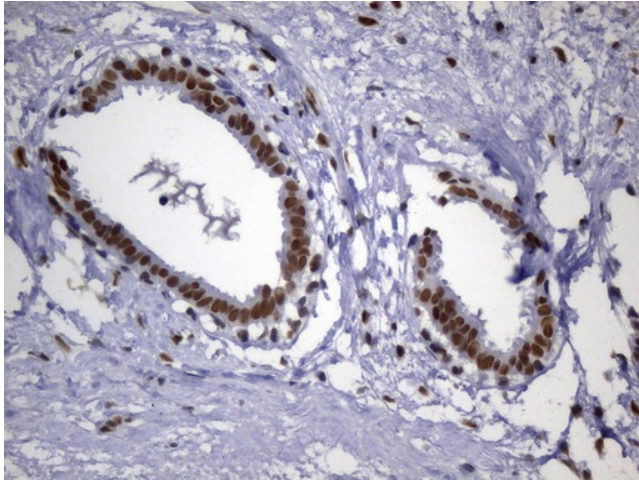
Product data:

| | |
|-------------------------|--|
| Product Type: | Primary Antibodies |
| Clone Name: | UMAB259 |
| Applications: | IHC |
| Recommended Dilution: | IHC 1:2400 |
| Reactivity: | Human, Mouse, Rat |
| Host: | Mouse |
| Isotype: | IgG2b |
| Clonality: | Monoclonal |
| Immunogen: | Human recombinant protein fragment corresponding to amino acids 1-304 of human MSH2 (NP_000242) produced in E.coli. |
| Formulation: | PBS (pH 7.3) containing 1% BSA, 50% glycerol and 0.02% sodium azide. |
| Concentration: | 0.5~1.0 mg/ml (Lot Dependent) |
| Purification: | Purified from mouse ascites fluids or tissue culture supernatant by affinity chromatography (protein A/G) |
| Conjugation: | Unconjugated |
| Storage: | Store at -20°C as received. |
| Stability: | Stable for 12 months from date of receipt. |
| Predicted Protein Size: | 104.6 kDa |
| Gene Name: | mutS homolog 2 |
| Database Link: | NP_000242 Entrez Gene 17685 Mouse Entrez Gene 81709 Rat Entrez Gene 4436 Human P43246 |
| Background: | This locus is frequently mutated in hereditary nonpolyposis colon cancer (HNPCC). When cloned, it was discovered to be a human homolog of the E. coli mismatch repair gene mutS, consistent with the characteristic alterations in microsatellite sequences (RER+ phenotype) found in HNPCC. Two transcript variants encoding different isoforms have been found for this gene. [provided by RefSeq, Apr 2012] |

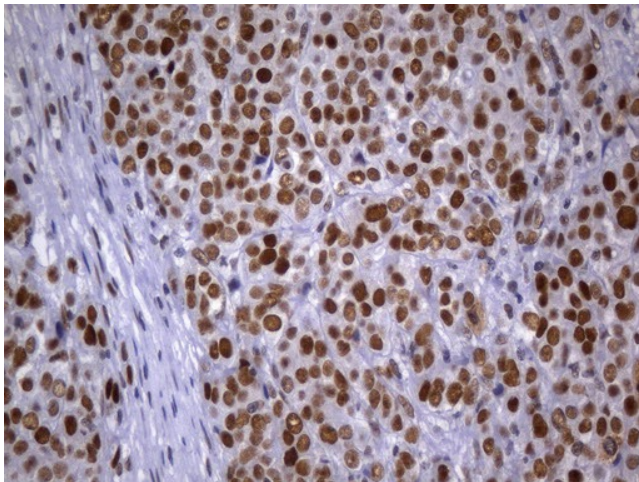


[View online »](#)

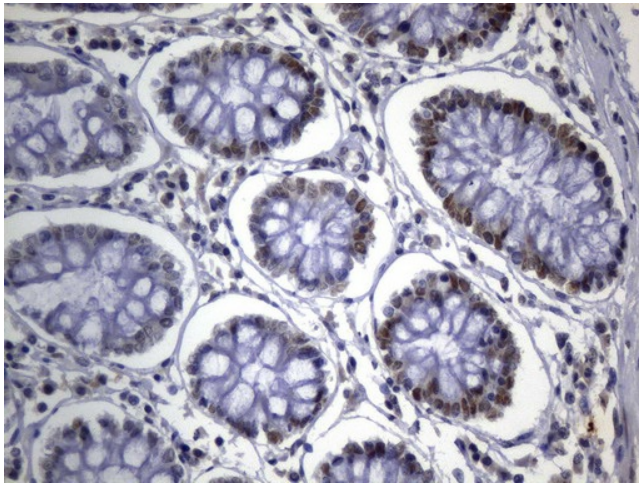
Synonyms: COCA1; FCC1; hMSH2; HNPCC; HNPCC1; LCFS2; MMRCS2
Protein Families: Druggable Genome, Stem cell - Pluripotency
Protein Pathways: Colorectal cancer, Mismatch repair, Pathways in cancer

Product images:

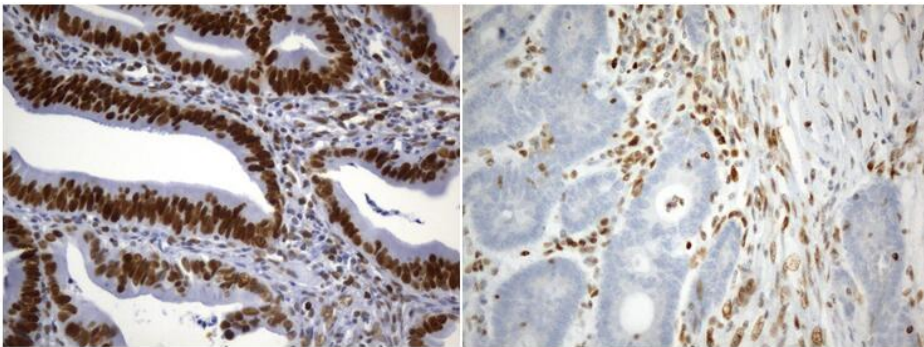
Immunohistochemical staining of paraffin-embedded Human breast tissue within the normal limits using anti-MSH2 mouse monoclonal antibody. (Heat-induced epitope retrieval by 1mM EDTA in 10mM Tris buffer (pH8.0) at 120°C for 2.5 min, [UM800149]) (1:2400)



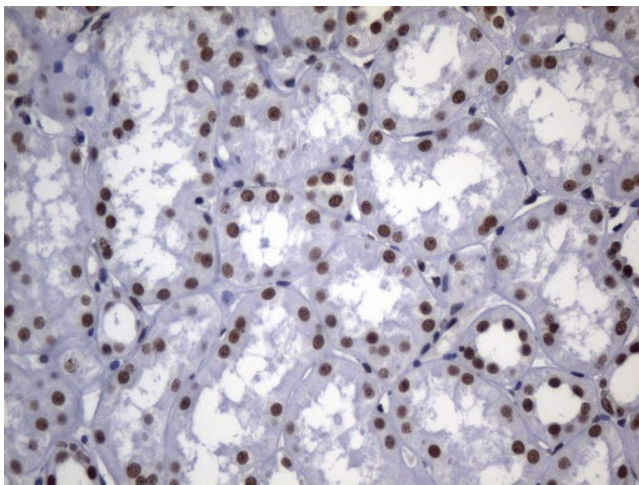
Immunohistochemical staining of paraffin-embedded Adenocarcinoma of Human breast tissue using anti-MSH2 mouse monoclonal antibody. (Heat-induced epitope retrieval by 1mM EDTA in 10mM Tris buffer (pH8.0) at 120°C for 2.5 min, [UM800149]) (1:2400)



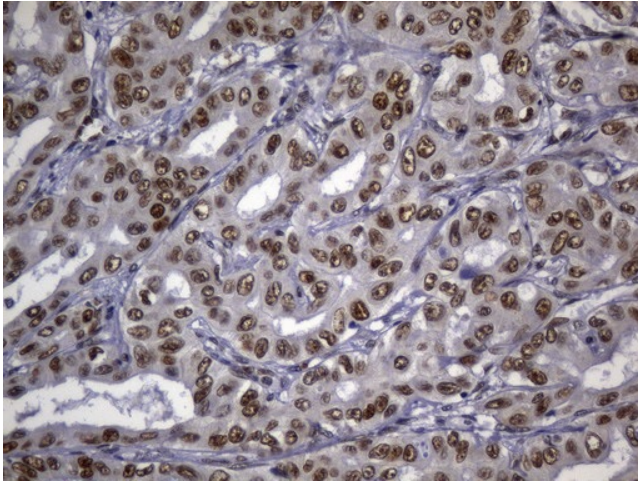
Immunohistochemical staining of paraffin-embedded Human colon tissue within the normal limits using anti-MSH2 mouse monoclonal antibody. (Heat-induced epitope retrieval by 1mM EDTA in 10mM Tris buffer (pH8.0) at 120°C for 2.5 min, [UM800149]) (1:2400)



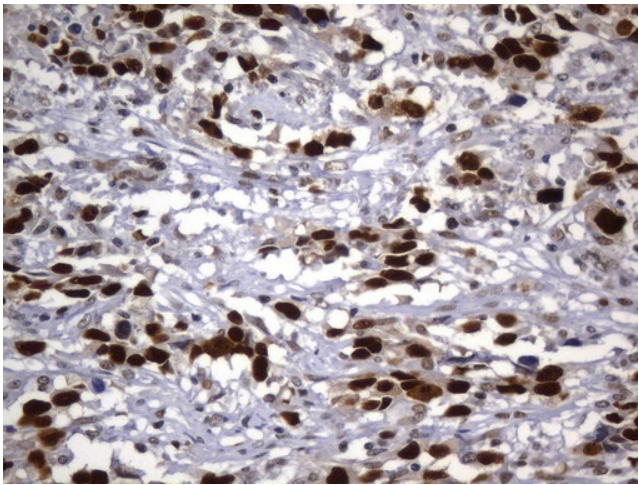
Immunohistochemical staining of paraffin-embedded Adenocarcinoma of Human colon tissue using anti-MSH2 mouse monoclonal antibody. (Heat-induced epitope retrieval by 1mM EDTA in 10mM Tris buffer (pH8.0) at 120°C for 2.5 min, [UM800149]) (1:2400)



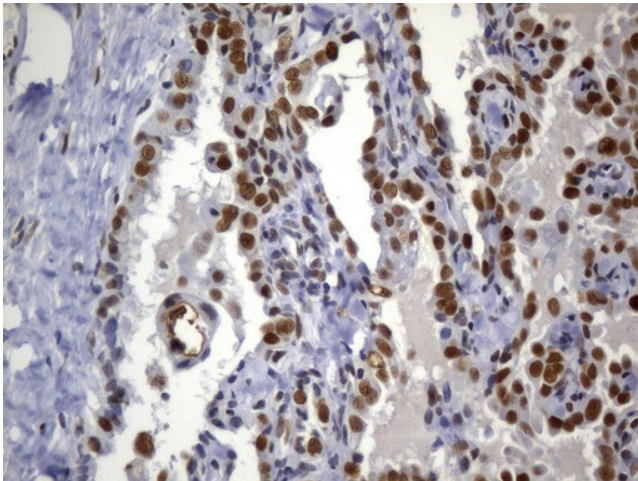
Immunohistochemical staining of paraffin-embedded Human Kidney tissue within the normal limits using anti-MSH2 mouse monoclonal antibody. (Heat-induced epitope retrieval by 1mM EDTA in 10mM Tris buffer (pH8.0) at 120°C for 2.5 min, [UM800149]) (1:2400)



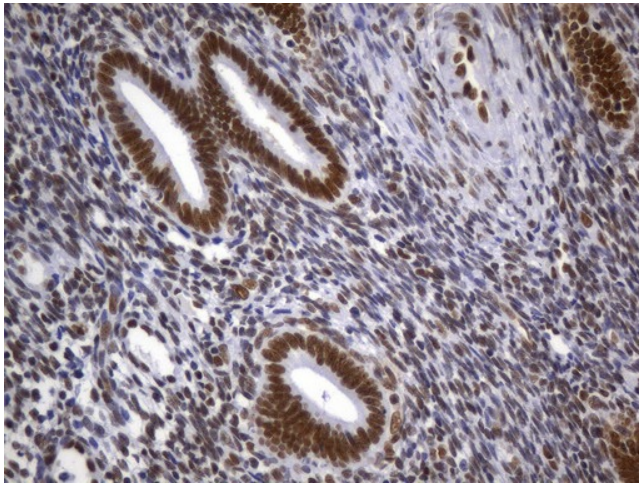
Immunohistochemical staining of paraffin-embedded Carcinoma of Human liver tissue using anti-MSH2 mouse monoclonal antibody. (Heat-induced epitope retrieval by 1mM EDTA in 10mM Tris buffer (pH8.0) at 120°C for 2.5 min, [UM800149]) (1:2400)



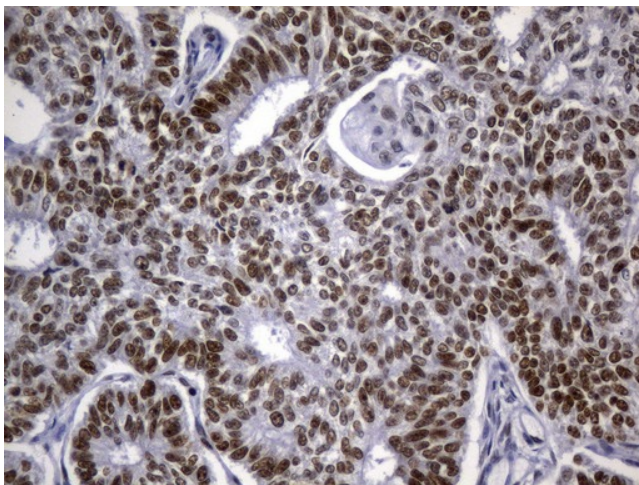
Immunohistochemical staining of paraffin-embedded Adenocarcinoma of Human ovary tissue using anti-MSH2 mouse monoclonal antibody. (Heat-induced epitope retrieval by 1mM EDTA in 10mM Tris buffer (pH8.0) at 120°C for 2.5 min, [UM800149]) (1:2400)



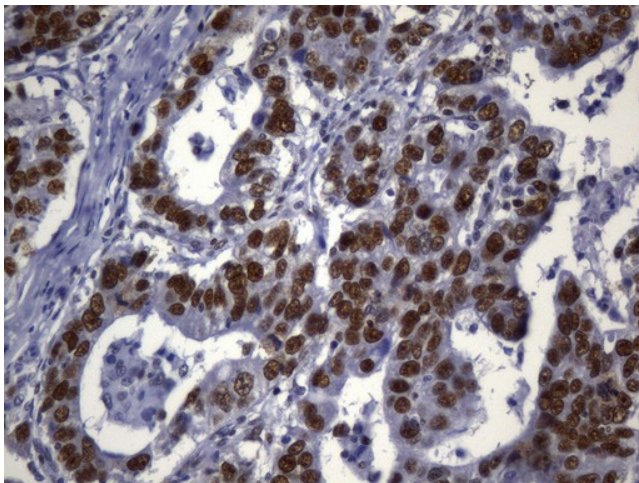
Immunohistochemical staining of paraffin-embedded Carcinoma of Human thyroid tissue using anti-MSH2 mouse monoclonal antibody. (Heat-induced epitope retrieval by 1mM EDTA in 10mM Tris buffer (pH8.0) at 120°C for 2.5 min, [UM800149]) (1:2400)



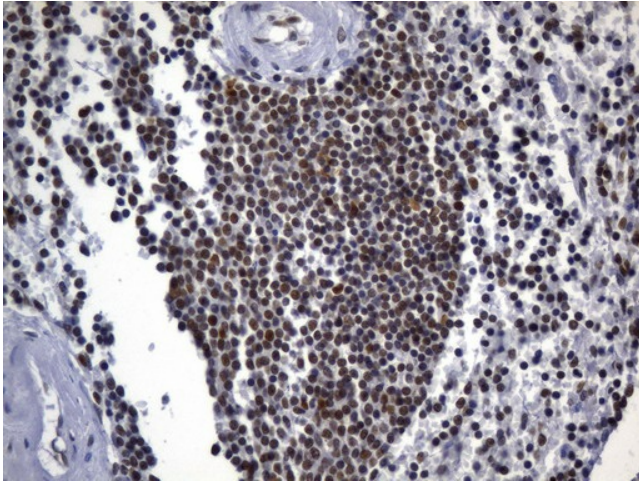
Immunohistochemical staining of paraffin-embedded Human endometrium tissue within the normal limits using anti-MSH2 mouse monoclonal antibody. (Heat-induced epitope retrieval by 1mM EDTA in 10mM Tris buffer (pH8.0) at 120°C for 2.5 min, [UM800149]) (1:2400)



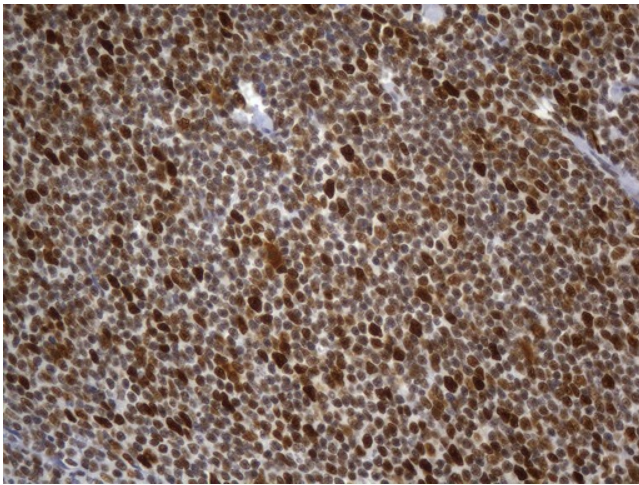
Immunohistochemical staining of paraffin-embedded Adenocarcinoma of Human endometrium tissue using anti-MSH2 mouse monoclonal antibody. (Heat-induced epitope retrieval by 1mM EDTA in 10mM Tris buffer (pH8.0) at 120°C for 2.5 min, [UM800149]) (1:2400)



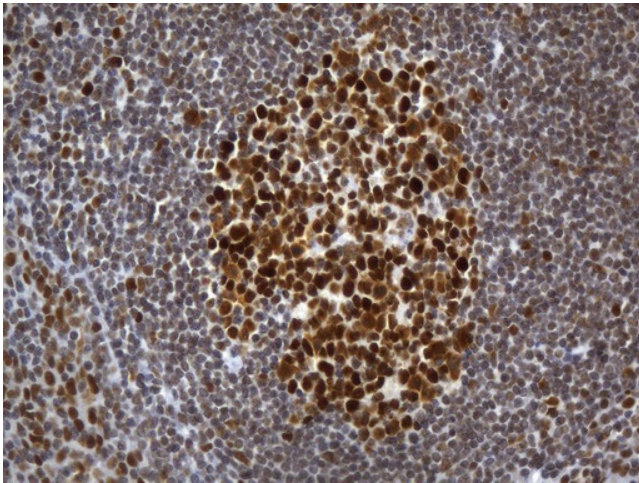
Immunohistochemical staining of paraffin-embedded Carcinoma of Human bladder tissue using anti-MSH2 mouse monoclonal antibody. (Heat-induced epitope retrieval by 1mM EDTA in 10mM Tris buffer (pH8.0) at 120°C for 2.5 min, [UM800149]) (1:2400)



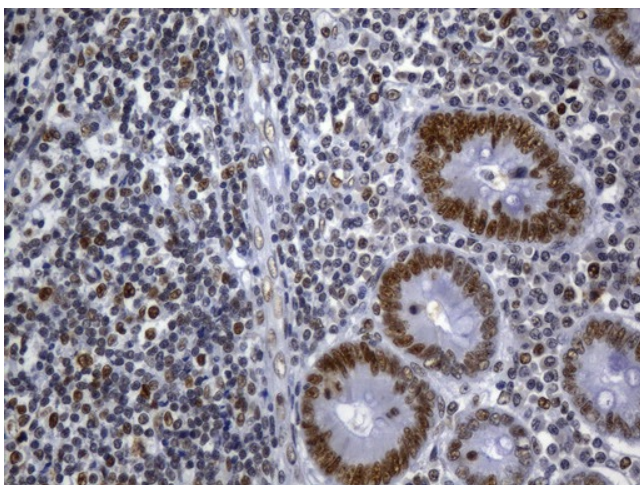
Immunohistochemical staining of paraffin-embedded Human lymph node tissue within the normal limits using anti-MSH2 mouse monoclonal antibody. (Heat-induced epitope retrieval by 1mM EDTA in 10mM Tris buffer (pH8.0) at 120°C for 2.5 min, [UM800149]) (1:2400)



Immunohistochemical staining of paraffin-embedded Human lymphoma tissue using anti-MSH2 mouse monoclonal antibody. (Heat-induced epitope retrieval by 1mM EDTA in 10mM Tris buffer (pH8.0) at 120°C for 2.5 min, [UM800149]) (1:2400)



Immunohistochemical staining of paraffin-embedded Human tonsil within the normal limits using anti-MSH2 mouse monoclonal antibody. (Heat-induced epitope retrieval by 1mM EDTA in 10mM Tris buffer (pH8.0) at 120°C for 2.5 min, [UM800149]) (1:2400)



Immunohistochemical staining of paraffin-embedded Human appendix tissue within the normal limits using anti-MSH2 mouse monoclonal antibody. (Heat-induced epitope retrieval by 1mM EDTA in 10mM Tris buffer (pH8.0) at 120°C for 2.5 min, [UM800149]) (1:2400)