

Product datasheet for **UM870147**

Tyrosinase (TYR) Mouse Monoclonal Antibody [Clone ID: UMAB257]

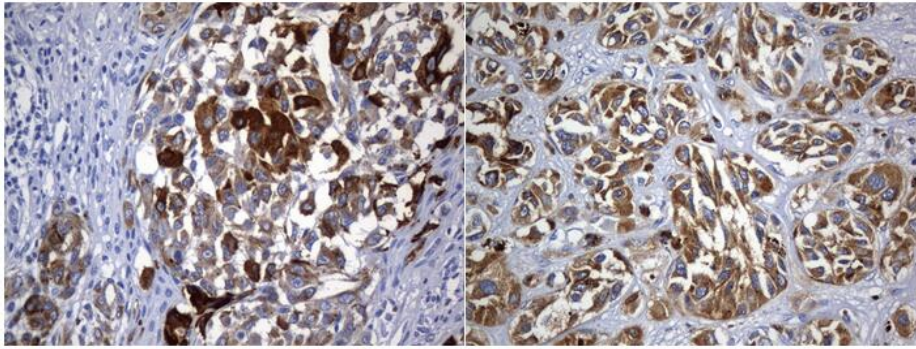
Product data:

Product Type:	Primary Antibodies
Clone Name:	UMAB257
Applications:	IHC, WB
Recommended Dilution:	WB 1:500~2000, IHC 1:1200
Reactivity:	Human, Mouse, Rat
Host:	Mouse
Isotype:	IgG1
Clonality:	Monoclonal
Immunogen:	Human recombinant protein fragment corresponding to amino acids 19-320 of human TYR (NP_000363) produced in E.coli.
Formulation:	PBS (pH 7.3) containing 1% BSA, 50% glycerol and 0.02% sodium azide.
Concentration:	0.5~1.0 mg/ml (Lot Dependent)
Purification:	Purified from mouse ascites fluids or tissue culture supernatant by affinity chromatography (protein A/G)
Conjugation:	Unconjugated
Storage:	Store at -20°C as received.
Stability:	Stable for 12 months from date of receipt.
Predicted Protein Size:	60.39 kDa
Gene Name:	tyrosinase
Database Link:	NP_000363 Entrez Gene 22173 Mouse Entrez Gene 308800 Rat Entrez Gene 7299 Human P14679
Synonyms:	ATN; CMM8; OCA1; OCA1A; OCAIA; SHEP3
Protein Families:	Transmembrane
Protein Pathways:	Melanogenesis, Metabolic pathways, Riboflavin metabolism, Tyrosine metabolism

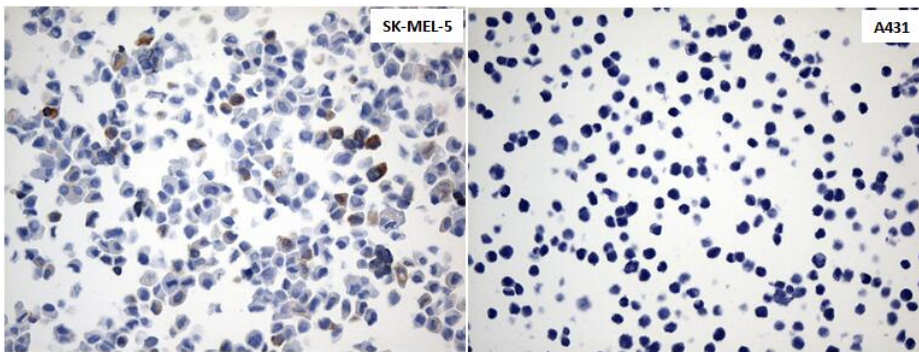


[View online »](#)

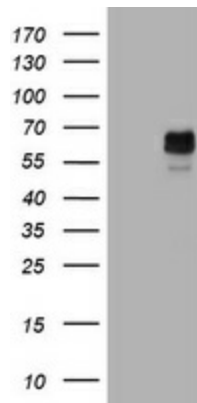
Product images:



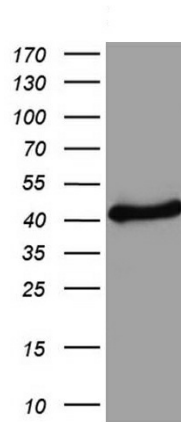
Immunohistochemical staining of paraffin-embedded Human melanoma tissue using anti-TYR (Tyrosinase) mouse monoclonal antibody. (Heat-induced epitope retrieval by 1mM EDTA in 10mM Tris buffer (pH8.0) at 120 oC for 2.5 min, [UM800147]) (1:1200)



Immunohistochemical staining of paraffin-embedded Carcinoma of cell pellets (The left is SK-MEL-5 and the right is A431) using anti-TYR Mouse monoclonal antibody. (Heat-induced epitope retrieval by 1mM EDTA in 10mM Tris buffer (pH8.0) at 120°C for 2.5 min, [UM800147])n (1:1200)



HEK293T cells were transfected with the pCMV6-ENTRY control (Left lane) or pCMV6-ENTRY TYR (Tyrosinase) ([RC221797], Right lane) cDNA for 48 hrs and lysed. Equivalent amounts of cell lysates (5 ug per lane) were separated by SDS-PAGE and immunoblotted with anti-TYR (Tyrosinase) (1:2000).



Western blot analysis of extracts (10ug) from SK-MEL-5 cell line by using anti-IDO1 monoclonal antibody (1:500).