

## Product datasheet for **UM870145**

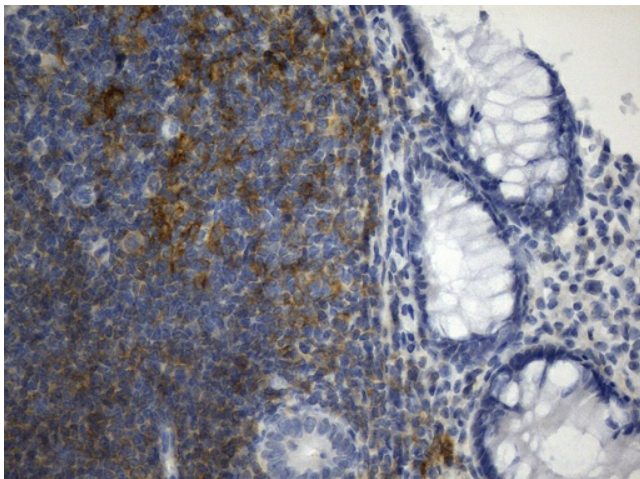
### CD40 Mouse Monoclonal Antibody [Clone ID: UMAB255]

#### Product data:

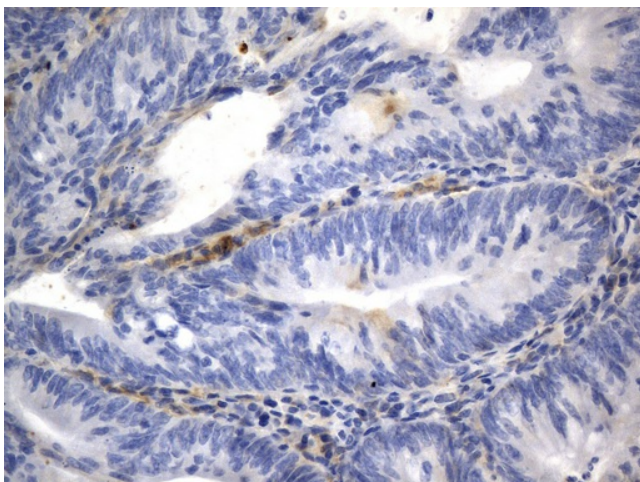
|                         |  |
|-------------------------|--|
| Product Type:           | Primary Antibodies   |
| Clone Name:             | UMAB255  |
| Applications:           | 10k-ChIP, IHC, WB  |
| Recommended Dilution:   | WB 1:500~2000, IHC 1:100~600   |
| Reactivity:             | Human  |
| Host:                   | Mouse  |
| Isotype:                | IgG1   |
| Clonality:              | Monoclonal   |
| Immunogen:              | Human recombinant protein fragment corresponding to amino acids 21-166 of human CD40(NP_001241) produced in E.coli.  |
| Formulation:            | PBS (pH 7.3) containing 1% BSA, 50% glycerol and 0.02% sodium azide.   |
| Concentration:          | 0.5~1.0 mg/ml (Lot Dependent)  |
| Purification:           | Purified from mouse ascites fluids or tissue culture supernatant by affinity chromatography (protein A/G)  |
| Conjugation:            | Unconjugated   |
| Storage:                | Store at -20°C as received.  |
| Stability:              | Stable for 12 months from date of receipt.   |
| Predicted Protein Size: | 30.62 kDa  |
| Gene Name:              | CD40 molecule  |
| Database Link:          | <a href="#">NP_001241</a><br><a href="#">Entrez Gene 958 Human</a><br><a href="#">P25942</a>   |
| Synonyms:               | Bp50; CDW40; p50; TNFRSF5  |
| Protein Families:       | Druggable Genome, Secreted Protein, Transmembrane  |
| Protein Pathways:       | Allograft rejection, Asthma, Autoimmune thyroid disease, Cell adhesion molecules (CAMs), Cytokine-cytokine receptor interaction, Primary immunodeficiency, Systemic lupus erythematosus, Toll-like receptor signaling pathway, Viral myocarditis |



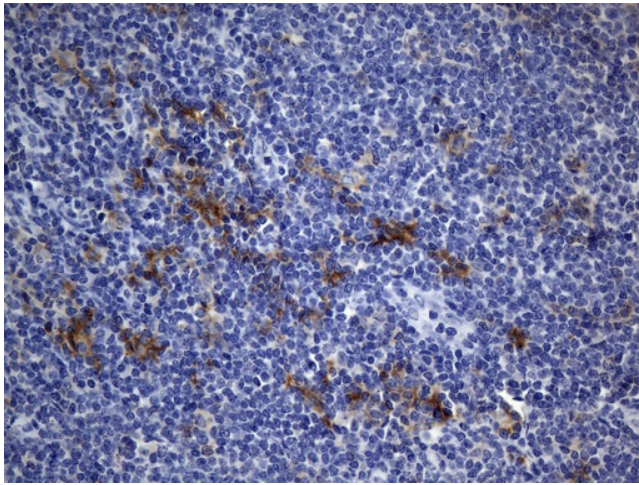
[View online »](#)

**Product images:**

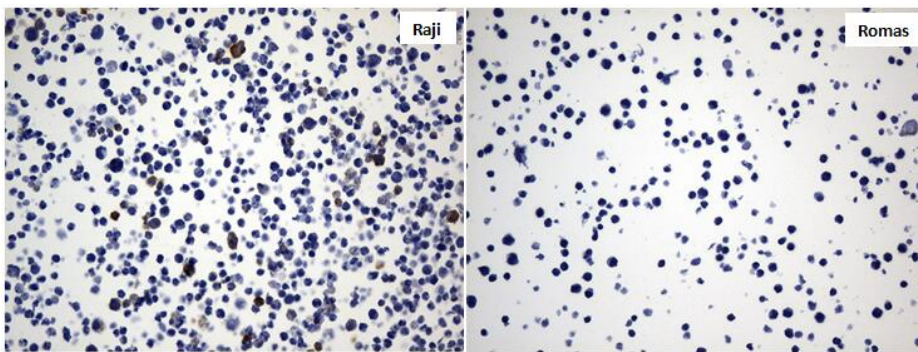
Immunohistochemical staining of paraffin-embedded Human colon tissue within the normal limits using anti-CD40 mouse monoclonal antibody. (Heat-induced epitope retrieval by 1mM EDTA in 10mM Tris buffer (pH8.0) at 120°C for 2.5 min, [UM800145]) (1:600)



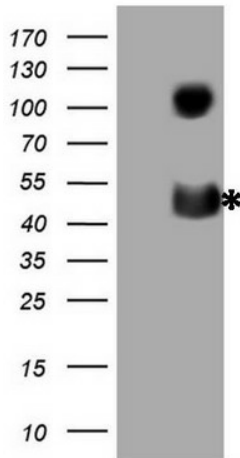
Immunohistochemical staining of paraffin-embedded Adenocarcinoma of Human colon tissue using anti-CD40 mouse monoclonal antibody. (Heat-induced epitope retrieval by 1mM EDTA in 10mM Tris buffer (pH8.0) at 120°C for 2.5 min, [UM800145]) (1:600)



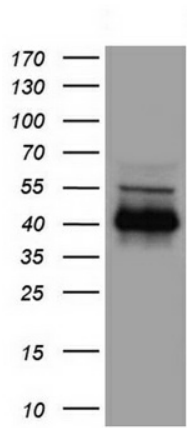
Immunohistochemical staining of paraffin-embedded Human tonsil within the normal limits using anti-CD40 mouse monoclonal antibody. (Heat-induced epitope retrieval by 1mM EDTA in 10mM Tris buffer (pH8.0) at 120°C for 2.5 min, [UM800145]) (1:600)



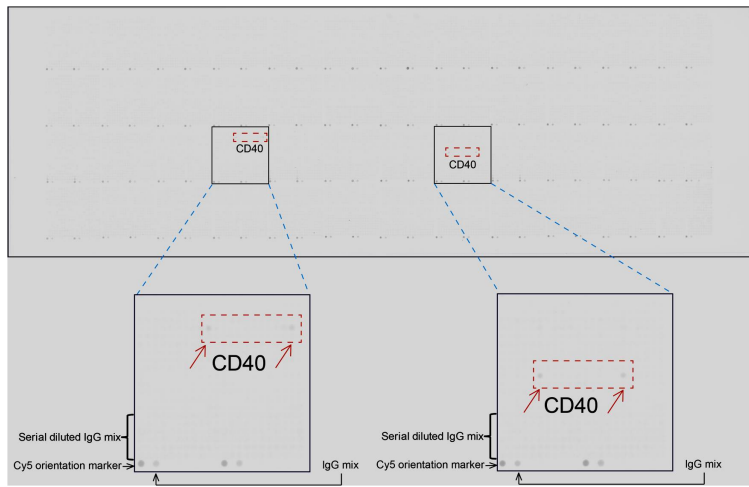
Immunohistochemical staining of paraffin-embedded cell pellets (The left is Raji and the right is Romax) using anti-CD40 Mouse monoclonal antibody. (Heat-induced epitope retrieval by 1mM EDTA in 10mM Tris buffer (pH8.0) at 120°C for 2.5 min, [UM800145]) (1:600).



HEK293T cells were transfected with the pCMV6-ENTRY control (Left lane) or pCMV6-ENTRY CD40 ([RC201977], Right lane) cDNA for 48 hrs and lysed. Equivalent amounts of cell lysates (5 ug per lane) were separated by SDS-PAGE and immunoblotted with anti-CD40 (1:2000).



Western blot analysis of extracts (10ug) from Raji cell line by using anti-CD40 monoclonal antibody (1:500).



OriGene overexpression protein microarray chip was immunostained with UltraMAB anti-CD40 mouse monoclonal antibody (UUM800145). The positive reactive proteins are highlighted with two red arrows in the enlarged subarray. All the positive controls spotted in this subarray are also labeled for clarification (1:100).