

Product datasheet for **UM870141**

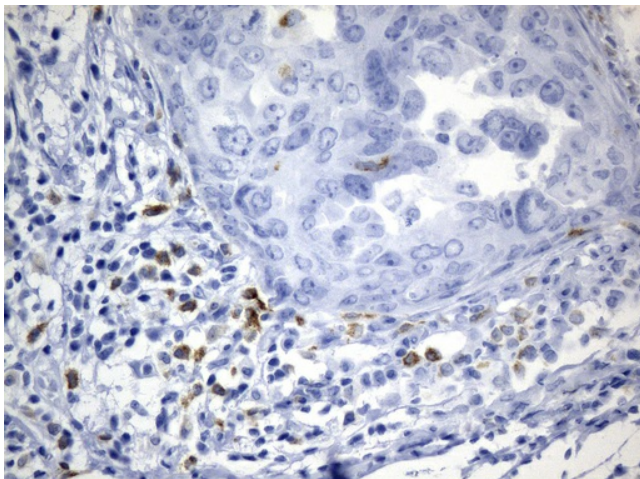
CTLA4 Mouse Monoclonal Antibody [Clone ID: UMAB249]

Product data:

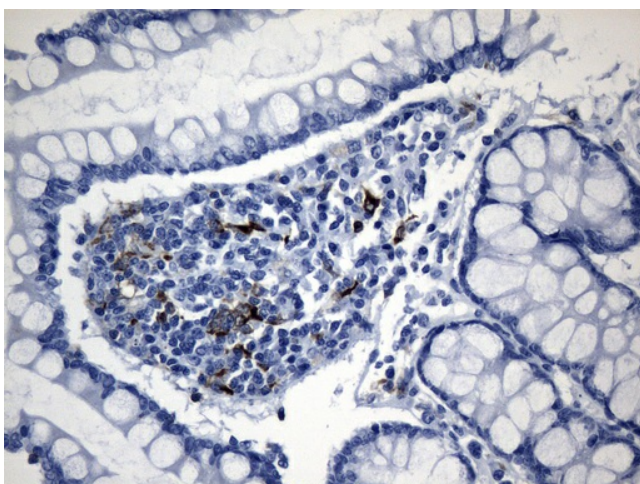
Product Type:	Primary Antibodies
Clone Name:	UMAB249
Applications:	IHC, WB
Recommended Dilution:	IHC 1:200
Reactivity:	Human
Host:	Mouse
Isotype:	IgG1
Clonality:	Monoclonal
Immunogen:	Full length human recombinant protein of human CTLA4 (NP_001032720) produced in HEK293T cell.
Formulation:	PBS (pH 7.3) containing 1% BSA, 50% glycerol and 0.02% sodium azide.
Concentration:	0.5~1.0 mg/ml (Lot Dependent)
Purification:	Purified from mouse ascites fluids or tissue culture supernatant by affinity chromatography (protein A/G)
Conjugation:	Unconjugated
Storage:	Store at -20°C as received.
Stability:	Stable for 12 months from date of receipt.
Predicted Protein Size:	19.15 kDa
Gene Name:	cytotoxic T-lymphocyte associated protein 4
Database Link:	NP_001032720 Entrez Gene 1493 Human P16410
Synonyms:	ALPS5; CD; CD152; CELIAC3; CTLA-4; GRD4; GSE; IDDM12
Protein Families:	Druggable Genome, Transmembrane
Protein Pathways:	Autoimmune thyroid disease, Cell adhesion molecules (CAMs), T cell receptor signaling pathway



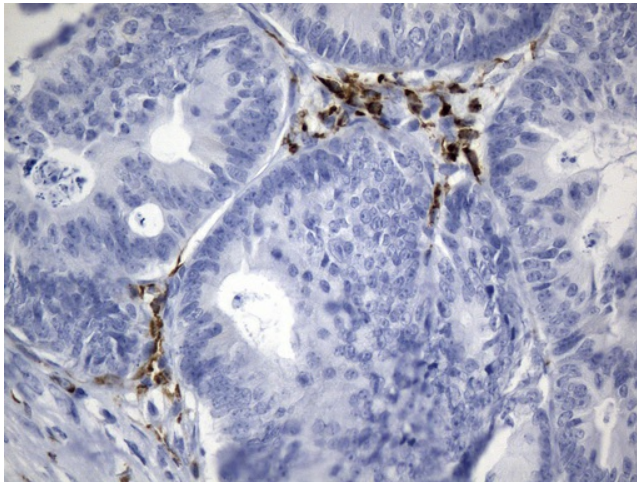
[View online »](#)

Product images:

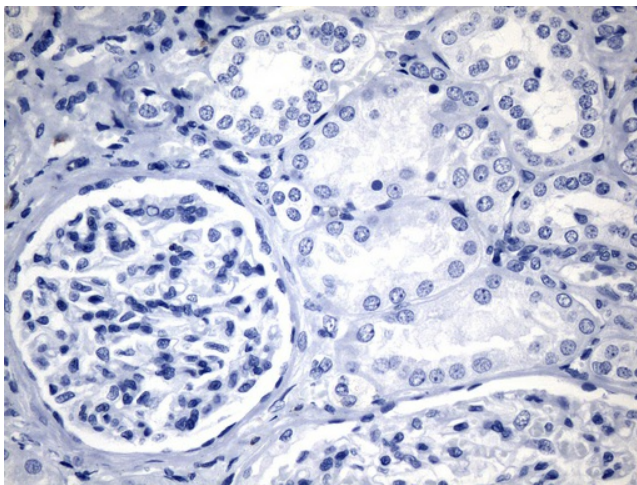
Immunohistochemical staining of paraffin-embedded Adenocarcinoma of Human breast tissue using anti-CTLA4 mouse monoclonal antibody. (Heat-induced epitope retrieval by 1mM EDTA in 10mM Tris buffer (pH8.5) at 120°C for 3min, [UM800141]) (1:200)



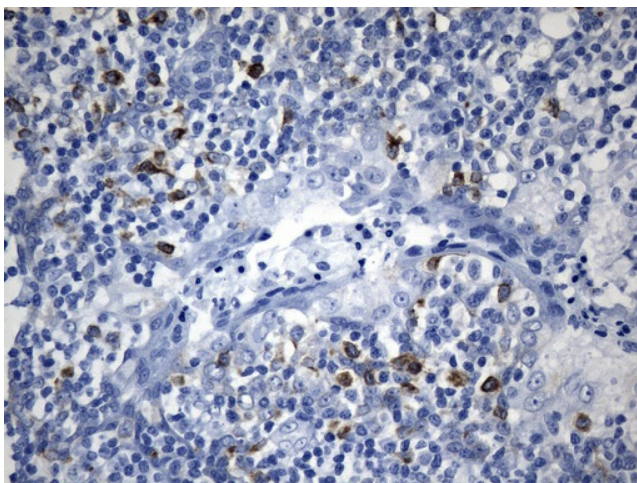
Immunohistochemical staining of paraffin-embedded Human colon tissue within the normal limits using anti-CTLA4 mouse monoclonal antibody. (Heat-induced epitope retrieval by 1mM EDTA in 10mM Tris buffer (pH8.5) at 120°C for 3min, [UM800141]) (1:200)



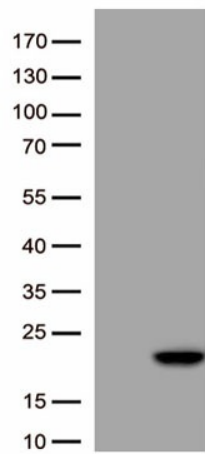
Immunohistochemical staining of paraffin-embedded Adenocarcinoma of Human colon tissue using anti-CTLA4 mouse monoclonal antibody. (Heat-induced epitope retrieval by 1mM EDTA in 10mM Tris buffer (pH8.5) at 120°C for 3min, [UM800141]) (1:200)



Immunohistochemical staining of paraffin-embedded Human Kidney tissue (CTLA4 negative) within the normal limits using anti-CTLA4 mouse monoclonal antibody. (Heat-induced epitope retrieval by 1mM EDTA in 10mM Tris buffer (pH8.5) at 120°C for 3min, [UM800141]) (1:200)



Immunohistochemical staining of paraffin-embedded Human tonsil within the normal limits using anti-CTLA4 mouse monoclonal antibody. (Heat-induced epitope retrieval by 1mM EDTA in 10mM Tris buffer (pH8.5) at 120°C for 3min, [UM800141]) (1:200)



HEK293T cells were transfected with the pCMV6-ENTRY control (Left lane) or pCMV6-ENTRY CTLA4 ([RC213631], Right lane) cDNA for 48 hrs and lysed. Equivalent amounts of cell lysates (25 ug per lane) were separated by SDS-PAGE and immunoblotted with anti-[UM800141].(1:500)