

Product datasheet for **UM870140**

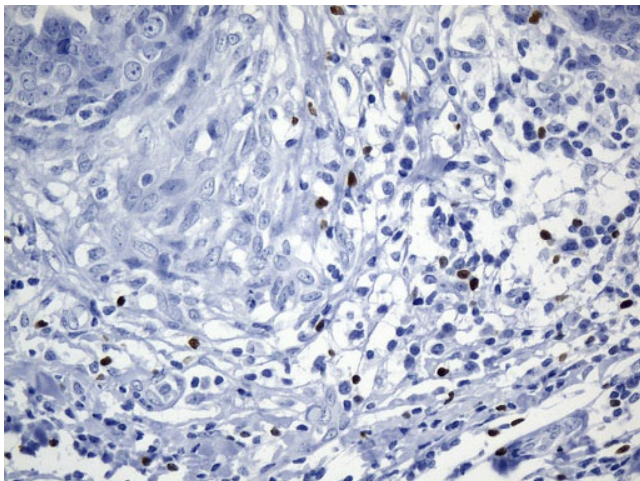
FOXP3 Mouse Monoclonal Antibody [Clone ID: UMAB248]

Product data:

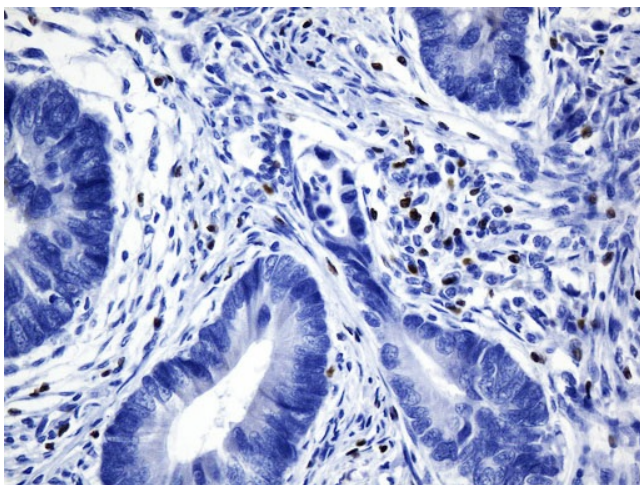
Product Type:	Primary Antibodies
Clone Name:	UMAB248
Applications:	10k-ChIP, IHC, WB
Recommended Dilution:	IHC 1:100~200
Reactivity:	Human, Mouse, Rat
Host:	Mouse
Isotype:	IgG2a
Clonality:	Monoclonal
Immunogen:	Full length human recombinant protein of human FOXP3 (NP_001107849) produced in E.coli.
Formulation:	PBS (pH 7.3) containing 1% BSA, 50% glycerol and 0.02% sodium azide.
Concentration:	0.5~1.0 mg/ml (Lot Dependent)
Purification:	Purified from mouse ascites fluids or tissue culture supernatant by affinity chromatography (protein A/G)
Conjugation:	Unconjugated
Storage:	Store at -20°C as received.
Stability:	Stable for 12 months from date of receipt.
Predicted Protein Size:	43.2 kDa
Gene Name:	forkhead box P3
Database Link:	NP_001107849 Entrez Gene 20371 Mouse Entrez Gene 317382 Rat Entrez Gene 50943 Human Q9BZS1
Synonyms:	AIID; DIETER; IPEX; JM2; PIDX; XPID
Protein Families:	Transcription Factors



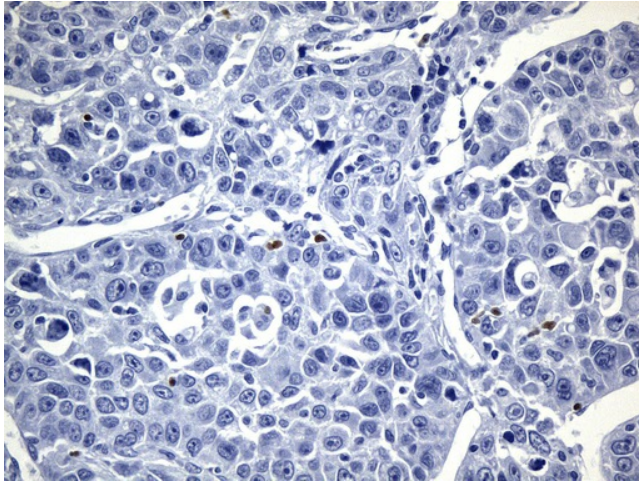
[View online »](#)

Product images:

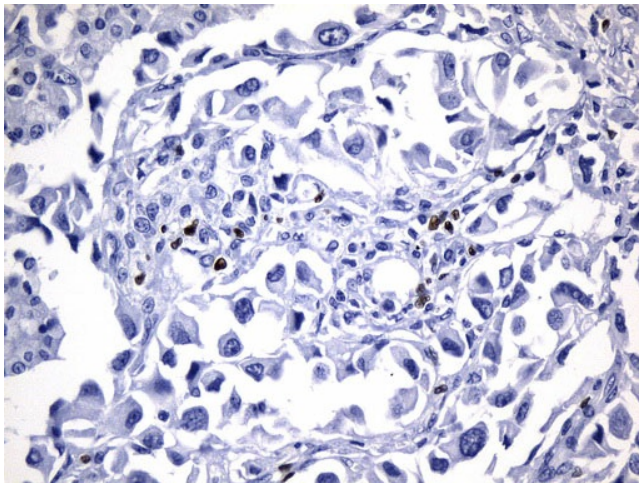
Immunohistochemical staining of paraffin-embedded Adenocarcinoma of Human breast tissue using anti-FOXP3 mouse monoclonal antibody. (Heat-induced epitope retrieval by 1mM EDTA in 10mM Tris buffer (pH8.5) at 120°C for 3min, [UM800140]) (1:200)



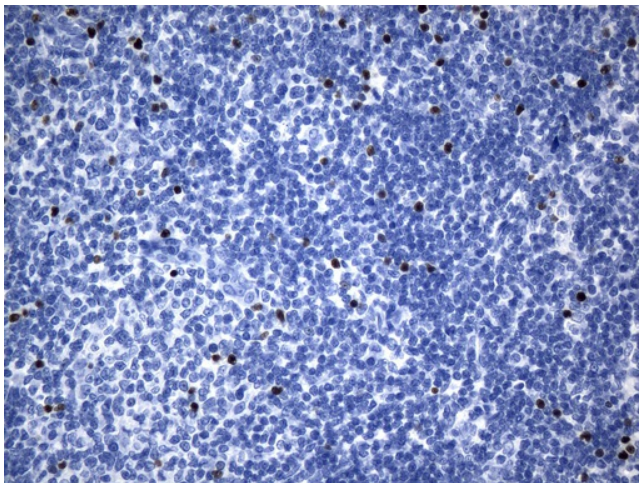
Immunohistochemical staining of paraffin-embedded Adenocarcinoma of Human colon tissue using anti-FOXP3 mouse monoclonal antibody. (Heat-induced epitope retrieval by 1mM EDTA in 10mM Tris buffer (pH8.5) at 120°C for 3min, [UM800140]) (1:200)



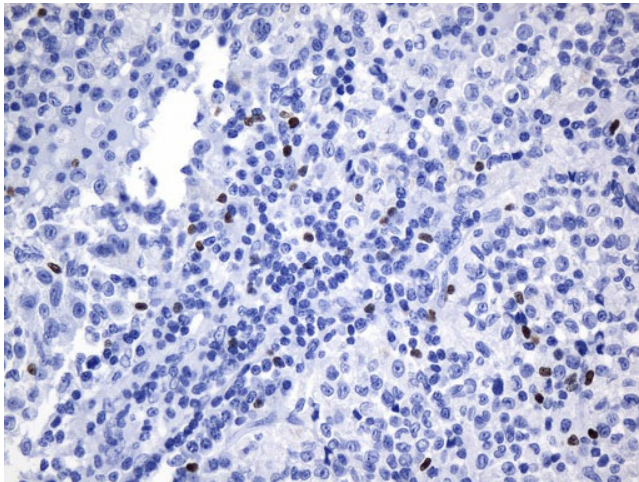
Immunohistochemical staining of paraffin-embedded Carcinoma of Human liver tissue using anti-FOXP3 mouse monoclonal antibody. (Heat-induced epitope retrieval by 1mM EDTA in 10mM Tris buffer (pH8.5) at 120°C for 3min, [UM800140]) (1:200)



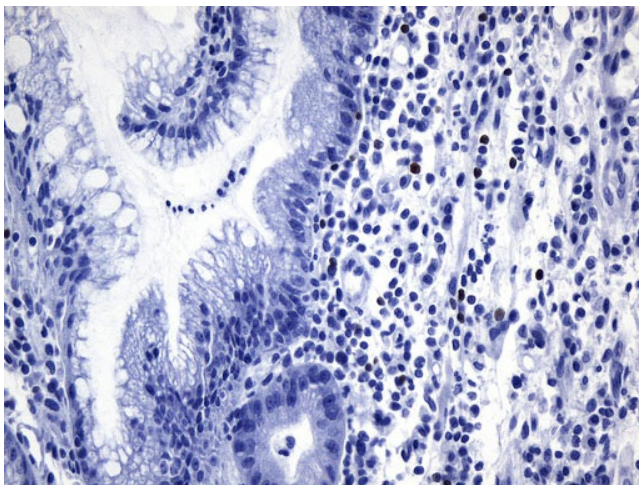
Immunohistochemical staining of paraffin-embedded Carcinoma of Human lung tissue using anti-FOXP3 mouse monoclonal antibody. (Heat-induced epitope retrieval by 1mM EDTA in 10mM Tris buffer (pH8.5) at 120°C for 3min, [UM800140]) (1:200)



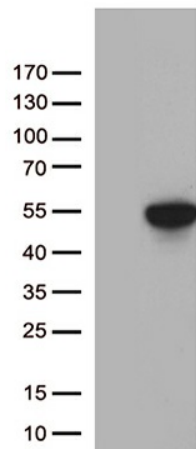
Immunohistochemical staining of paraffin-embedded Human lymphoma tissue using anti-FOXP3 mouse monoclonal antibody. (Heat-induced epitope retrieval by 1mM EDTA in 10mM Tris buffer (pH8.5) at 120°C for 3min, [UM800140]) (1:200)



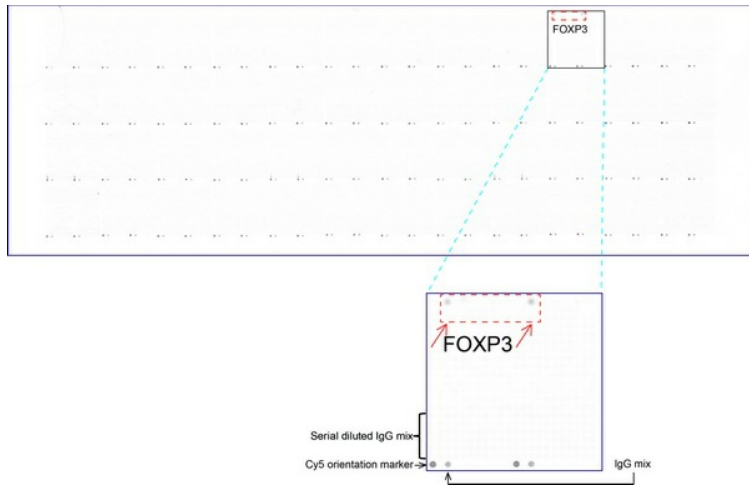
Immunohistochemical staining of paraffin-embedded Human melanoma tissue using anti-FOXP3 mouse monoclonal antibody. (Heat-induced epitope retrieval by 1mM EDTA in 10mM Tris buffer (pH8.5) at 120°C for 3min, [UM800140]) (1:200)



Immunohistochemical staining of paraffin-embedded Human Gastric Carcinoma using anti-FOXP3 mouse monoclonal antibody. (Heat-induced epitope retrieval by 1mM EDTA in 10mM Tris buffer (pH8.5) at 120°C for 3min, [UM800140]) (1:200).



HEK293T cells were transfected with the pCMV6-ENTRY control (Left lane) or pCMV6-ENTRY FOXP3 ([RC217580], Right lane) cDNA for 48 hrs and lysed. Equivalent amounts of cell lysates (5 ug per lane) were separated by SDS-PAGE and immunoblotted with anti-FOXP3 mouse monoclonal antibody.1:500



OriGene overexpression protein microarray chip was immunostained with UltraMAB anti-FOXP3 mouse monoclonal antibody ([UM800140]). The positive reactive proteins are highlighted with two red arrows in the enlarged subarray. All the positive controls spotted in this subarray are also labeled for clarification (1:100).