

Product datasheet for **UM870139**

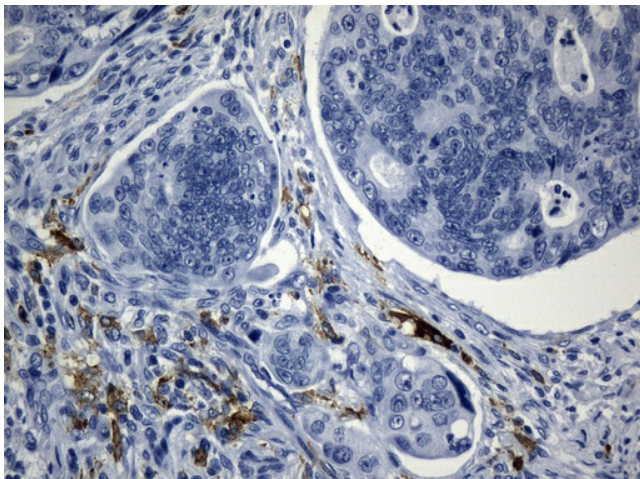
Macrophage Scavenger Receptor I (MSR1) Mouse Monoclonal Antibody [Clone ID: UMAB247]

Product data:

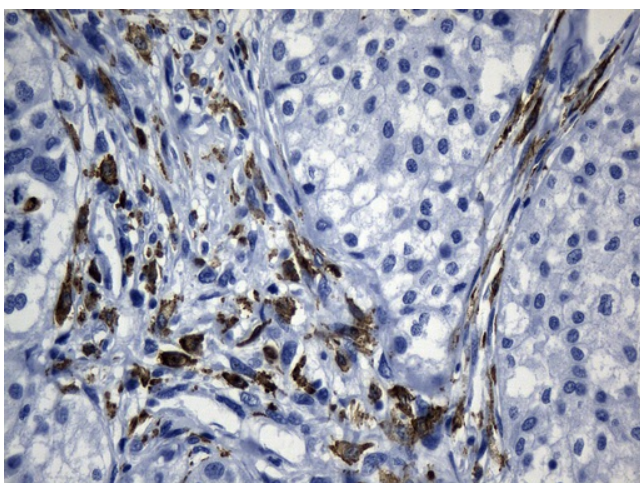
| | |
|-------------------------|--|
| Product Type: | Primary Antibodies |
| Clone Name: | UMAB247 |
| Applications: | 10k-ChIP, IHC |
| Recommended Dilution: | IHC 1:100~1200 |
| Reactivity: | Human |
| Host: | Mouse |
| Isotype: | IgG1 |
| Clonality: | Monoclonal |
| Immunogen: | Human recombinant protein fragment corresponding to amino acids 197-451 of human MSR1(NP_619730) produced in E.coli. |
| Formulation: | PBS (pH 7.3) containing 1% BSA, 50% glycerol and 0.02% sodium azide. |
| Concentration: | 0.5~1.0 mg/ml (Lot Dependent) |
| Purification: | Purified from mouse ascites fluids or tissue culture supernatant by affinity chromatography (protein A/G) |
| Conjugation: | Unconjugated |
| Storage: | Store at -20°C as received. |
| Stability: | Stable for 12 months from date of receipt. |
| Predicted Protein Size: | 42.8 kDa |
| Gene Name: | macrophage scavenger receptor 1 |
| Database Link: | NP_619730 Entrez Gene 4481 Human P21757 |
| Synonyms: | CD204; phSR1; phSR2; SCARA1; SR-A; SRA |
| Protein Families: | Druggable Genome, Transmembrane |



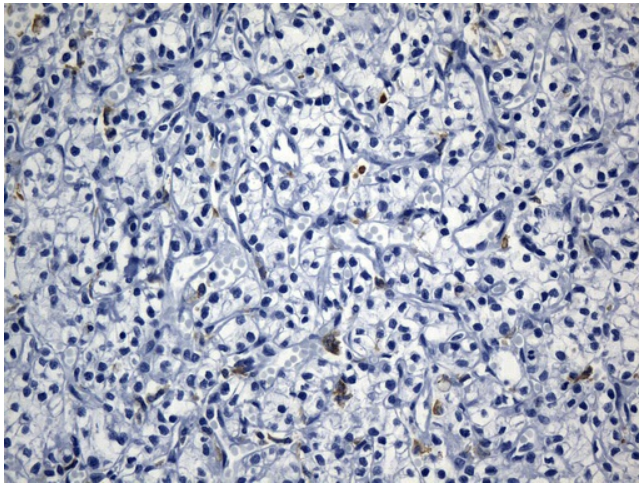
[View online »](#)

Product images:

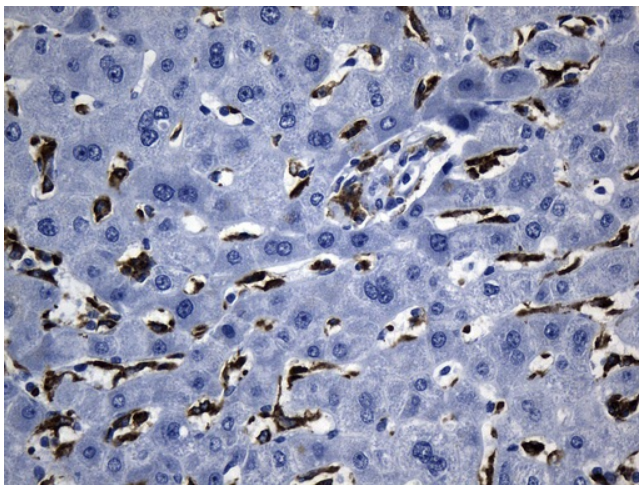
Immunohistochemical staining of paraffin-embedded Adenocarcinoma of Human colon tissue using anti-MSR1 mouse monoclonal antibody. (Heat-induced epitope retrieval by 1mM EDTA in 10mM Tris buffer (pH8.5) at 120°C for 3min, [UM800139]) (1:1200)



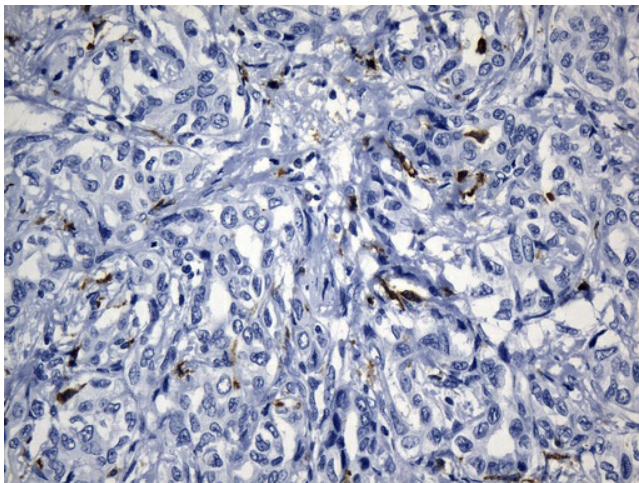
Immunohistochemical staining of paraffin-embedded Human Kidney tissue within the normal limits using anti-MSR1 mouse monoclonal antibody. (Heat-induced epitope retrieval by 1mM EDTA in 10mM Tris buffer (pH8.5) at 120°C for 3min, [UM800139]) (1:1200)



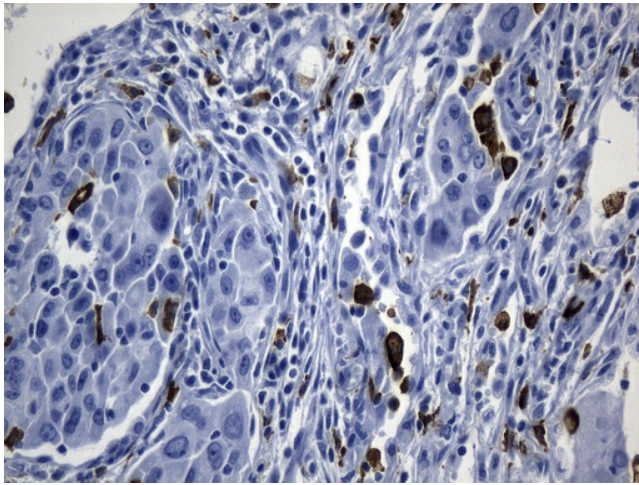
Immunohistochemical staining of paraffin-embedded Carcinoma of Human kidney tissue using anti-MSR1 mouse monoclonal antibody. (Heat-induced epitope retrieval by 1mM EDTA in 10mM Tris buffer (pH8.5) at 120°C for 3min, [UM800139]) (1:1200)



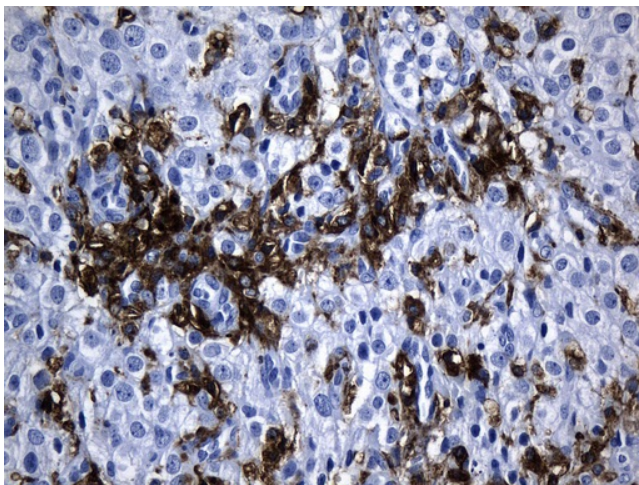
Immunohistochemical staining of paraffin-embedded Human liver tissue within the normal limits using anti-MSR1 mouse monoclonal antibody. (Heat-induced epitope retrieval by 1mM EDTA in 10mM Tris buffer (pH8.5) at 120°C for 3min, [UM800139]) (1:1200)



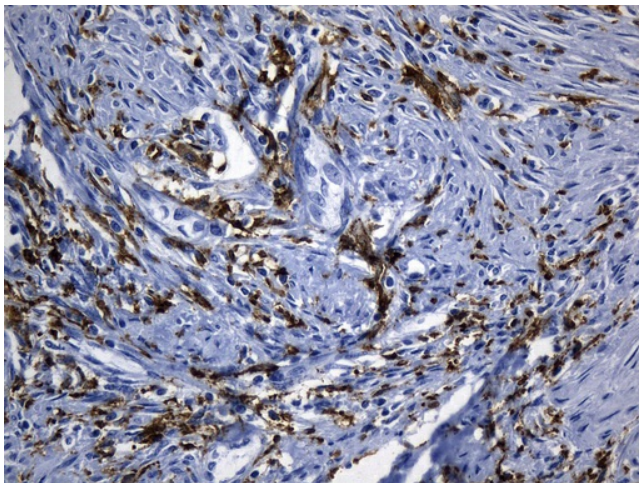
Immunohistochemical staining of paraffin-embedded Carcinoma of Human liver tissue using anti-MSR1 mouse monoclonal antibody. (Heat-induced epitope retrieval by 1mM EDTA in 10mM Tris buffer (pH8.5) at 120°C for 3min, [UM800139]) (1:1200)



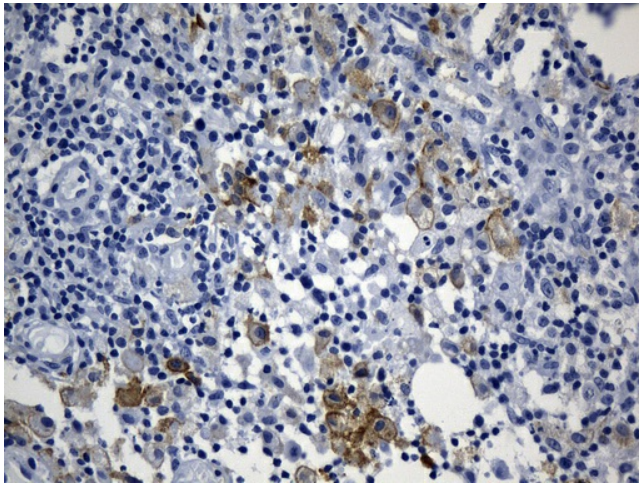
Immunohistochemical staining of paraffin-embedded Carcinoma of Human lung tissue using anti-MSR1 mouse monoclonal antibody. (Heat-induced epitope retrieval by 1mM EDTA in 10mM Tris buffer (pH8.5) at 120°C for 3min, [UM800139]) (1:1200)



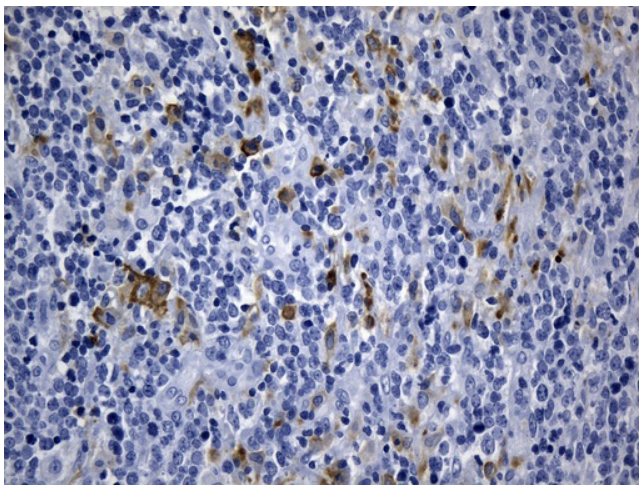
Immunohistochemical staining of paraffin-embedded Human Ovary tissue within the normal limits using anti-MSR1 mouse monoclonal antibody. (Heat-induced epitope retrieval by 1mM EDTA in 10mM Tris buffer (pH8.5) at 120°C for 3min, [UM800139]) (1:1200)



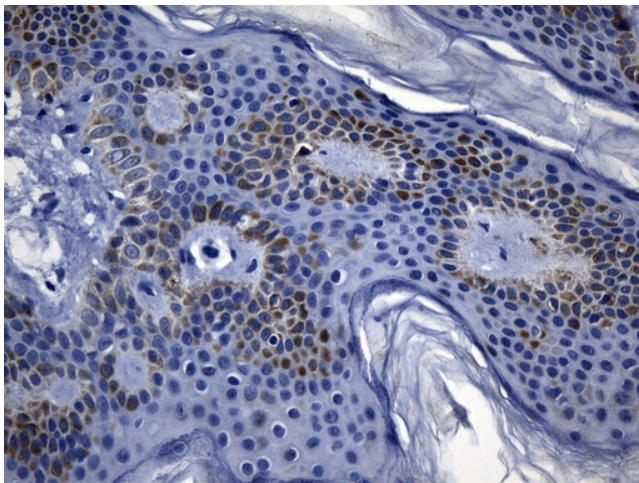
Immunohistochemical staining of paraffin-embedded Adenocarcinoma of Human endometrium tissue using anti-MSR1 mouse monoclonal antibody. (Heat-induced epitope retrieval by 1mM EDTA in 10mM Tris buffer (pH8.5) at 120°C for 3min, [UM800139]) (1:1200)



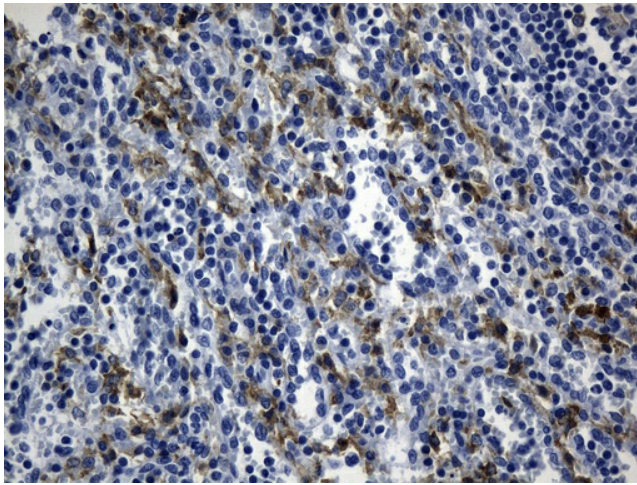
Immunohistochemical staining of paraffin-embedded Carcinoma of Human bladder tissue using anti-MSR1 mouse monoclonal antibody. (Heat-induced epitope retrieval by 1mM EDTA in 10mM Tris buffer (pH8.5) at 120°C for 3min, [UM800139]) (1:1200)



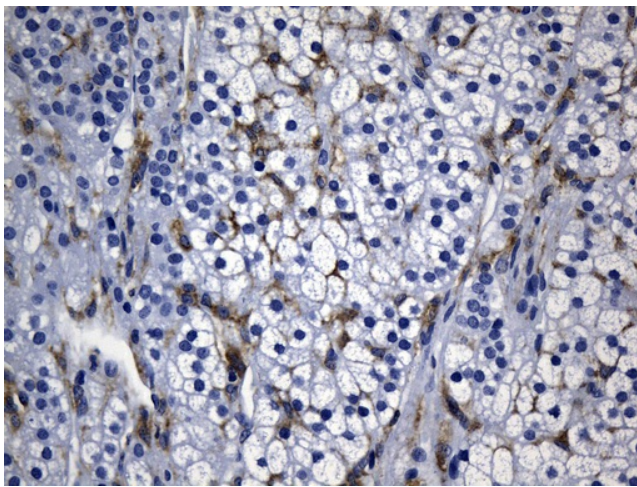
Immunohistochemical staining of paraffin-embedded Human lymphoma tissue using anti-MSR1 mouse monoclonal antibody. (Heat-induced epitope retrieval by 1mM EDTA in 10mM Tris buffer (pH8.5) at 120°C for 3min, [UM800139]) (1:1200)



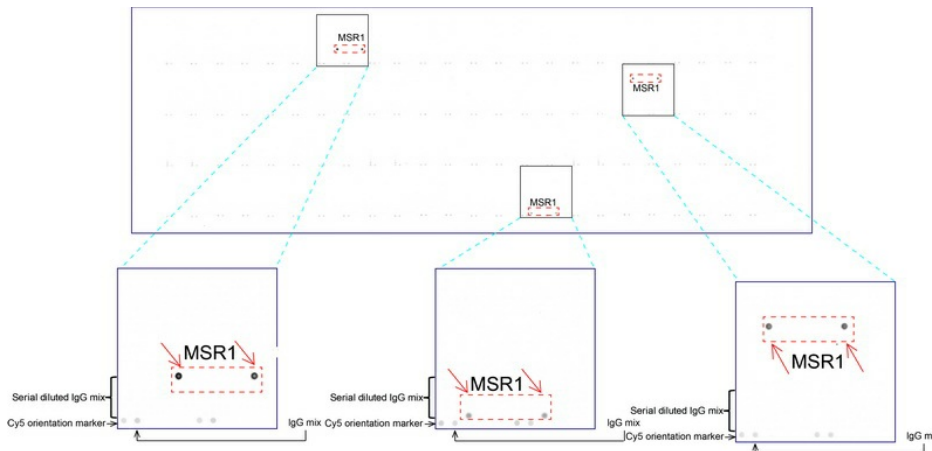
Immunohistochemical staining of paraffin-embedded Human skin tissue within the normal limits using anti-MSR1 mouse monoclonal antibody. (Heat-induced epitope retrieval by 1mM EDTA in 10mM Tris buffer (pH8.5) at 120°C for 3min, [UM800139]) (1:1200)



Immunohistochemical staining of paraffin-embedded Human spleen tissue within the normal limits using anti-MSR1 mouse monoclonal antibody. (Heat-induced epitope retrieval by 1mM EDTA in 10mM Tris buffer (pH8.5) at 120°C for 3min, [UM800139]) (1:1200).



Immunohistochemical staining of paraffin-embedded Human paranephros tissue within the normal limits using anti-MSR1 mouse monoclonal antibody. (Heat-induced epitope retrieval by 1mM EDTA in 10mM Tris buffer (pH8.5) at 120°C for 3min, [UM800139]) (1:1200).



OriGene overexpression protein microarray chip was immunostained with UltraMAB anti-MSR1 mouse monoclonal antibody ([UM800139]). The positive reactive proteins are highlighted with two red arrows in the enlarged subarray. All the positive controls spotted in this subarray are also labeled for clarification (1:100).