

## Product datasheet for **UM870138**

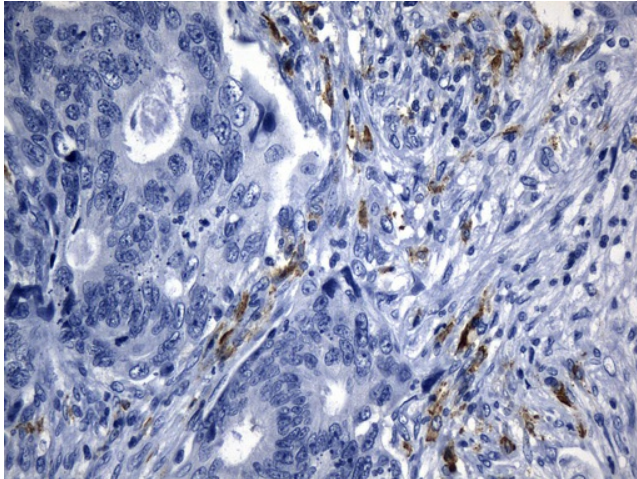
### Macrophage Scavenger Receptor I (MSR1) Mouse Monoclonal Antibody [Clone ID: UMAB246]

#### Product data:

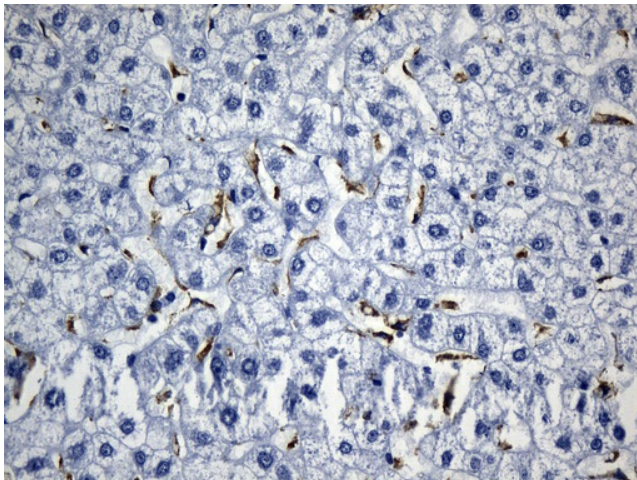
Product Type:	Primary Antibodies
Clone Name:	UMAB246
Applications:	10k-ChIP, IHC
Recommended Dilution:	IHC 1:100~600
Reactivity:	Human
Host:	Mouse
Isotype:	IgG1
Clonality:	Monoclonal
Immunogen:	Human recombinant protein fragment corresponding to amino acids 197-451 of human MSR1(NP_619730) produced in E.coli.
Formulation:	PBS (pH 7.3) containing 1% BSA, 50% glycerol and 0.02% sodium azide.
Concentration:	0.5~1.0 mg/ml (Lot Dependent)
Purification:	Purified from mouse ascites fluids or tissue culture supernatant by affinity chromatography (protein A/G)
Conjugation:	Unconjugated
Storage:	Store at -20°C as received.
Stability:	Stable for 12 months from date of receipt.
Predicted Protein Size:	42.8 kDa
Gene Name:	Homo sapiens macrophage scavenger receptor 1 (MSR1), transcript variant SR-AIII, mRNA.
Database Link:	<a href="#">NP_619730</a> <a href="#">Entrez Gene 4481 Human</a> <a href="#">P21757</a>
Synonyms:	CD204; phSR1; phSR2; SCARA1; SR-A; SRA
Protein Families:	Druggable Genome, Transmembrane



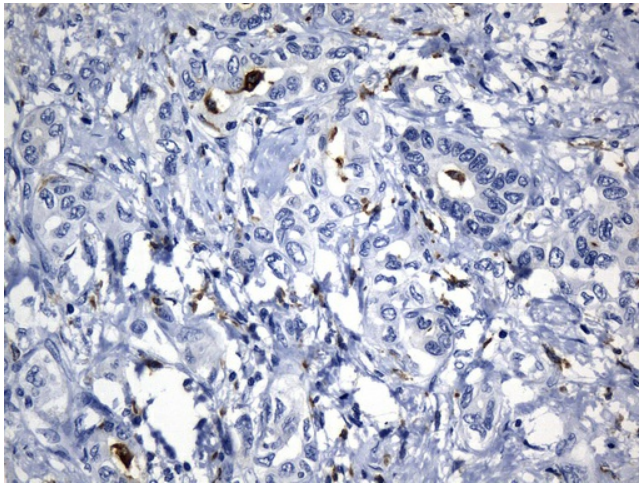
[View online »](#)

**Product images:**

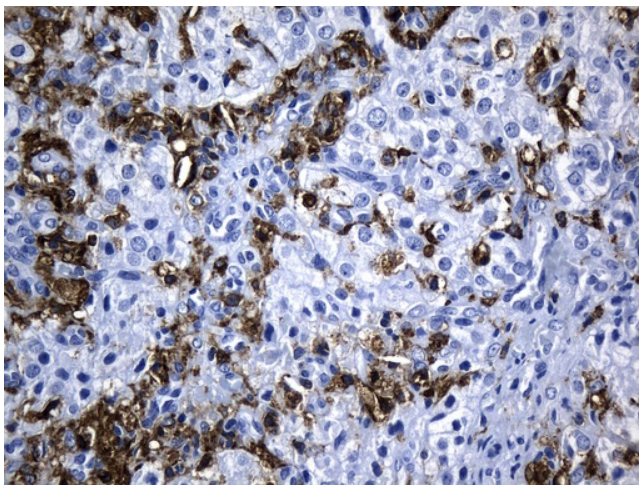
Immunohistochemical staining of paraffin-embedded Adenocarcinoma of Human colon tissue using anti-MSR1 mouse monoclonal antibody. (Heat-induced epitope retrieval by 1mM EDTA in 10mM Tris buffer (pH8.5) at 120°C for 3min, [UM800138]) (1:600)



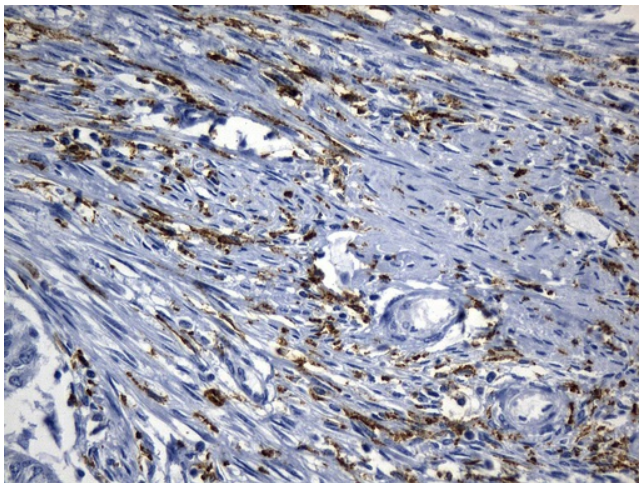
Immunohistochemical staining of paraffin-embedded Human liver tissue within the normal limits using anti-MSR1 mouse monoclonal antibody. (Heat-induced epitope retrieval by 1mM EDTA in 10mM Tris buffer (pH8.5) at 120°C for 3min, [UM800138]) (1:600)



Immunohistochemical staining of paraffin-embedded Carcinoma of Human liver tissue using anti-MSR1 mouse monoclonal antibody. (Heat-induced epitope retrieval by 1mM EDTA in 10mM Tris buffer (pH8.5) at 120°C for 3min, [UM800138]) (1:600)

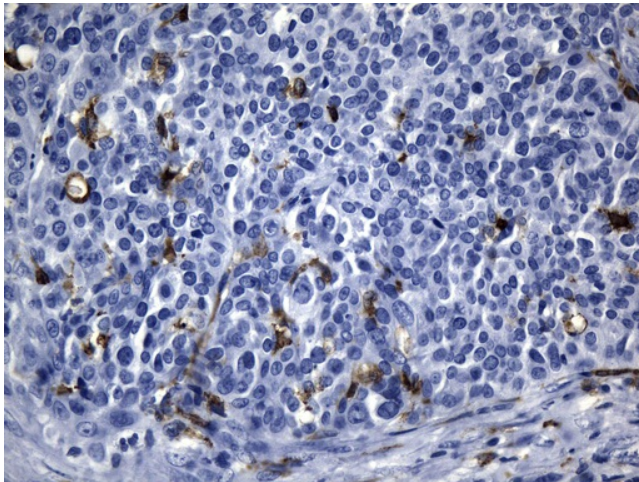


Immunohistochemical staining of paraffin-embedded Human Ovary tissue within the normal limits using anti-MSR1 mouse monoclonal antibody. (Heat-induced epitope retrieval by 1mM EDTA in 10mM Tris buffer (pH8.5) at 120°C for 3min, [UM800138]) (1:600)

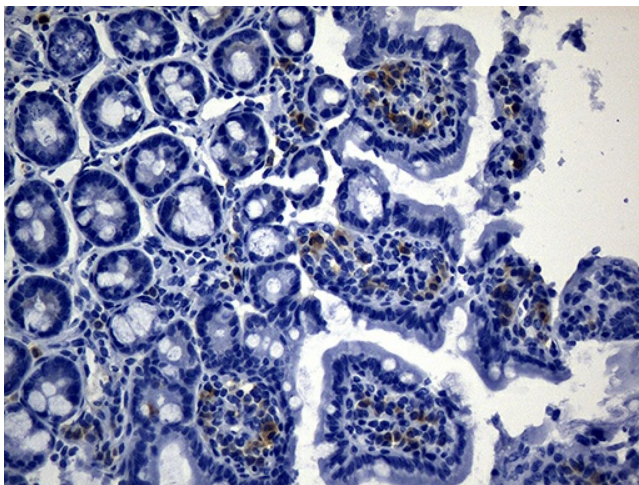


Immunohistochemical staining of paraffin-embedded Adenocarcinoma of Human endometrium tissue using anti-MSR1 mouse monoclonal antibody. (Heat-induced epitope retrieval by 1mM EDTA in 10mM Tris buffer (pH8.5) at 120°C for 3min, [UM800138]) (1:600)

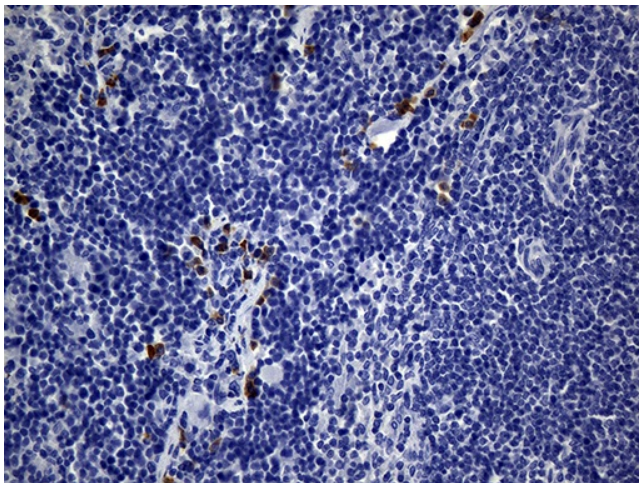




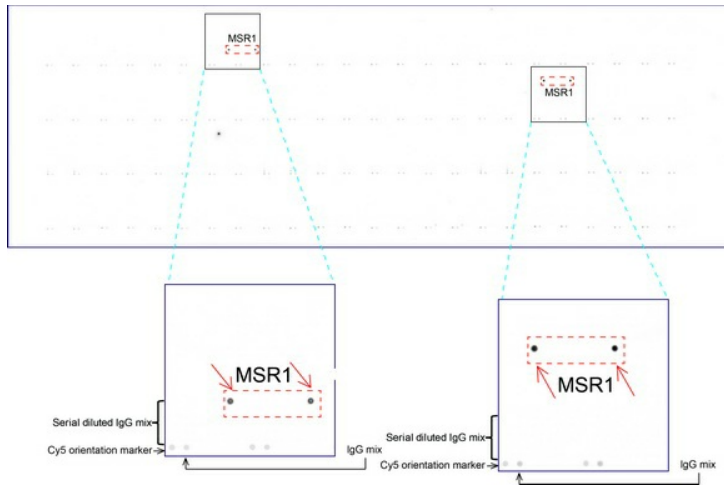
Immunohistochemical staining of paraffin-embedded Carcinoma of Human bladder tissue using anti-MSR1 mouse monoclonal antibody. (Heat-induced epitope retrieval by 1mM EDTA in 10mM Tris buffer (pH8.5) at 120°C for 3min, [UM800138]) (1:600)



Immunohistochemical staining of paraffin-embedded mouse ascending colon tissue using anti-CD204 (MSR1) clone UMAB246 mouse monoclonal antibody. (Heat-induced epitope retrieval by 1mM EDTA in 10mM Tris buffer (pH8.5) at 120°C for 3min, [UM800138]) (1:300).



Immunohistochemical staining of paraffin-embedded mouse spleen tissue using anti-MSR1 (CD204) clone UMAB246 mouse monoclonal antibody. (Heat-induced epitope retrieval by 1mM EDTA in 10mM Tris buffer (pH8.5) at 120°C for 3min, [UM800138]) (1:300).



OriGene overexpression protein microarray chip was immunostained with UltraMAB anti-MSR1 mouse monoclonal antibody ([UM800138]). The positive reactive proteins are highlighted with two red arrows in the enlarged subarray. All the positive controls spotted in this subarray are also labeled for clarification (1:100).