

Product datasheet for **UM870136**

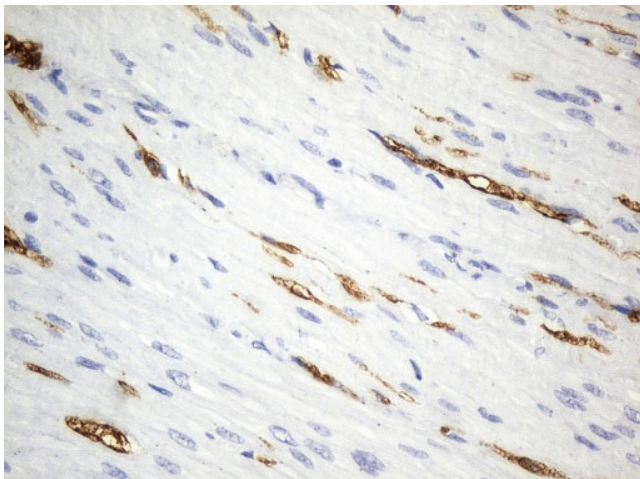
PGP9.5 (UCHL1) Mouse Monoclonal Antibody [Clone ID: UMAB244]

Product data:

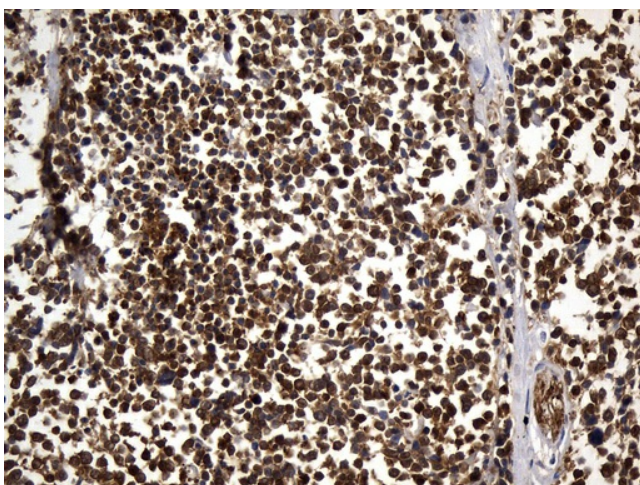
Product Type:	Primary Antibodies
Clone Name:	UMAB244
Applications:	10k-ChIP, IHC, WB
Recommended Dilution:	IHC 1:100~600
Reactivity:	Human, Mouse, Rat
Host:	Mouse
Isotype:	IgG1
Clonality:	Monoclonal
Immunogen:	Full length human recombinant protein of human UCHL1(NP_004172) produced in HEK293T cell.
Formulation:	PBS (pH 7.3) containing 1% BSA, 50% glycerol and 0.02% sodium azide.
Concentration:	0.5~1.0 mg/ml (Lot Dependent)
Purification:	Purified from mouse ascites fluids or tissue culture supernatant by affinity chromatography (protein A/G)
Conjugation:	Unconjugated
Storage:	Store at -20°C as received.
Stability:	Stable for 12 months from date of receipt.
Predicted Protein Size:	24.6 kDa
Gene Name:	ubiquitin C-terminal hydrolase L1
Database Link:	NP_004172 Entrez Gene 22223 Mouse Entrez Gene 29545 Rat Entrez Gene 7345 Human P09936
Synonyms:	HEL-117; NDGOA; PARK5; PGP 9.5; PGP9.5; PGP95; Uch-L1
Protein Families:	Druggable Genome, Protease
Protein Pathways:	Parkinson's disease



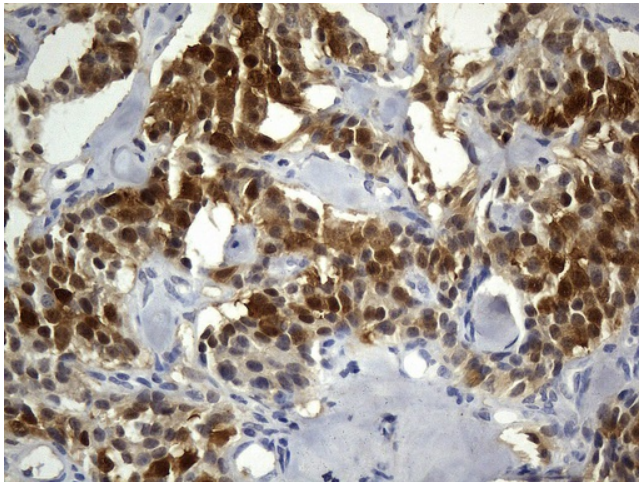
[View online »](#)

Product images:

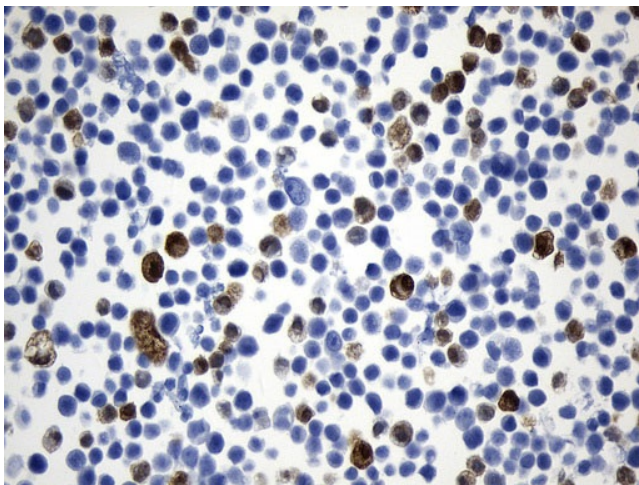
Immunohistochemical staining of paraffin-embedded Human colon tissue within the normal limits using anti-UCLH1 (PGP9.5) mouse monoclonal antibody. (Heat-induced epitope retrieval by 1mM EDTA in 10mM Tris buffer (pH8.5) at 120°C for 3min, [UM800136]) (1:600)



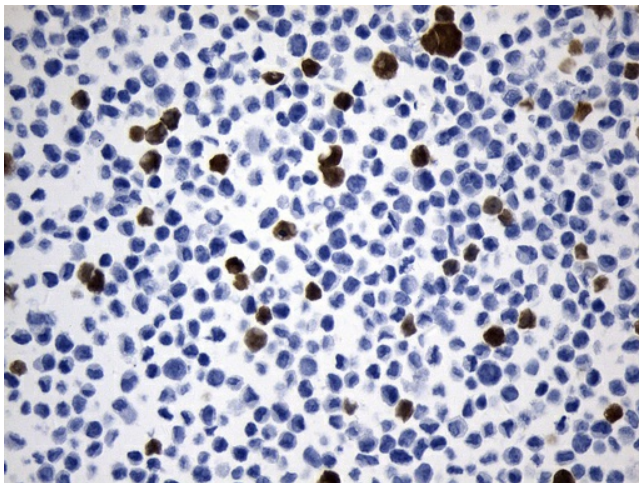
Immunohistochemical staining of paraffin-embedded Carcinoma of Human lung tissue using anti-UCLH1 (PGP9.5) mouse monoclonal antibody. (Heat-induced epitope retrieval by 1mM EDTA in 10mM Tris buffer (pH8.5) at 120°C for 3min, [UM800136]) (1:600)



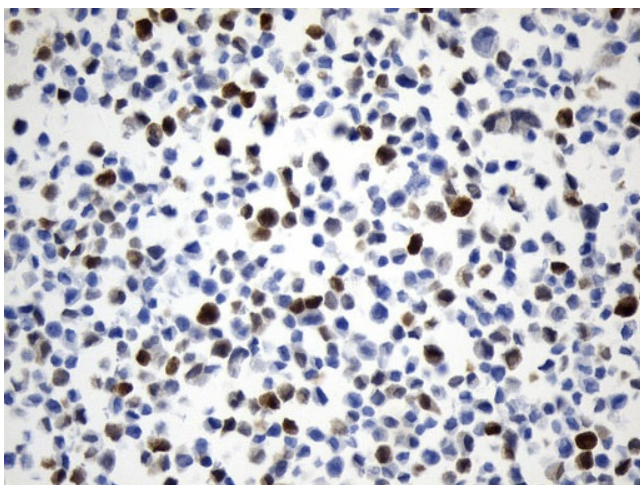
Immunohistochemical staining of paraffin-embedded Carcinoma of Human pancreas tissue using anti-UCLH1 (PGP9.5) mouse monoclonal antibody. (Heat-induced epitope retrieval by 1mM EDTA in 10mM Tris buffer (pH8.5) at 120°C for 3min, [UM800136]) (1:600)



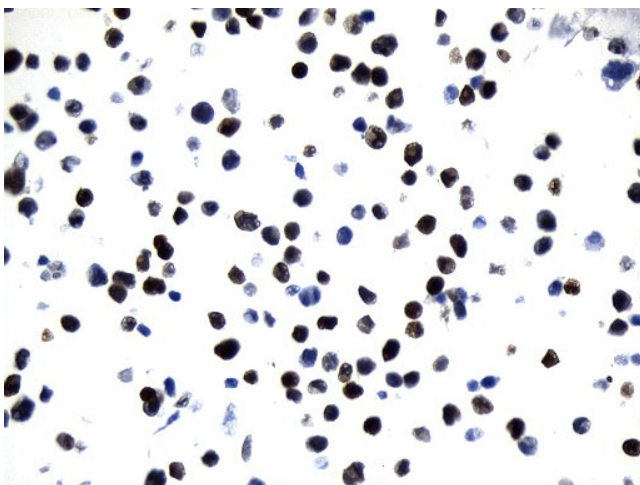
Immunohistochemical staining of paraffin-embedded MCF7 cell pellets using anti-UCLH1 (PGP9.5) mouse monoclonal antibody (Heat-induced epitope retrieval by 1mM EDTA in 10mM Tris buffer (pH8.0) at 120°C for 2.5 min, [UM800136]) (1:600)



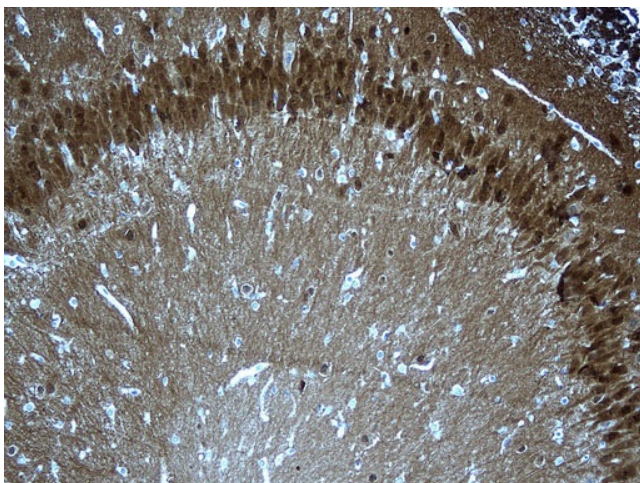
Immunohistochemical staining of paraffin-embedded NIH/3T3 cell pellets using anti-UCLH1 (PGP9.5) mouse monoclonal antibody (Heat-induced epitope retrieval by 1mM EDTA in 10mM Tris buffer (pH8.0) at 120°C for 2.5 min, [UM800136]) (1:600)



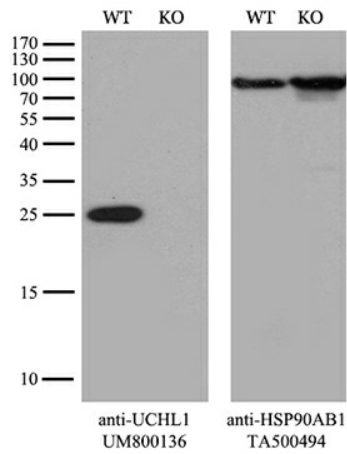
Immunohistochemical staining of paraffin-embedded COS-7 cell pellets using anti-UCLH1 (PGP9.5) mouse monoclonal antibody (Heat-induced epitope retrieval by 1mM EDTA in 10mM Tris buffer (pH8.0) at 120°C for 2.5 min, [UM800136]) (1:600)



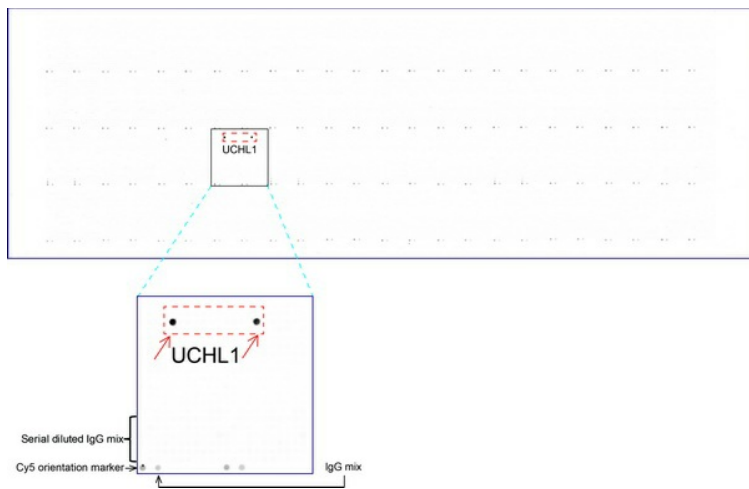
Immunohistochemical staining of paraffin-embedded Huh7 cell pellets using anti-UCLH1 (PGP9.5) mouse monoclonal antibody (Heat-induced epitope retrieval by 1mM EDTA in 10mM Tris buffer (pH8.0) at 120°C for 2.5 min, [UM800136]) (1:600)



Immunohistochemical staining of paraffin-embedded rat cerebrum tissue within the normal limits using anti-UCLH1 (PGP9.5) mouse monoclonal antibody. (Heat-induced epitope retrieval by 1mM EDTA in 10mM Tris buffer (pH8.5) at 120°C for 3min, [UM800136]) (1:150) (1:600)



Equivalent amounts of cell lysates (10 ug per lane) of wild-type 293T cells (WT, Cat# LC810293T) and UCHL1-Knockout 293T cells (KO, Cat# [LC810250]) were separated by SDS-PAGE and immunoblotted with anti-UCHL1 monoclonal antibody [UM800136]. Then the blotted membrane was stripped and reprobed with anti-HSP90AB1 antibody ([TA500494]) as a loading control (1:500).



OriGene overexpression protein microarray chip was immunostained with UltraMAB anti-UCHL1 (PGP9.5) mouse monoclonal antibody ([UM800136]). The positive reactive proteins are highlighted with two red arrows in the enlarged subarray. All the positive controls spotted in this subarray are also labeled for clarification (1:100).