

Product datasheet for **UM870131**

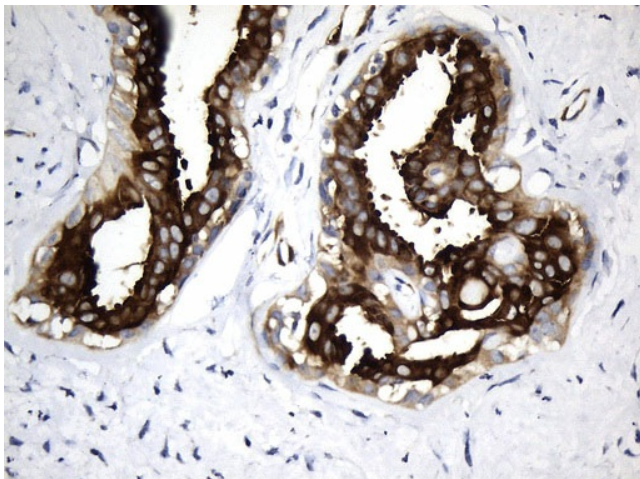
Tau (MAPT) Mouse Monoclonal Antibody [Clone ID: UMAB239]

Product data:

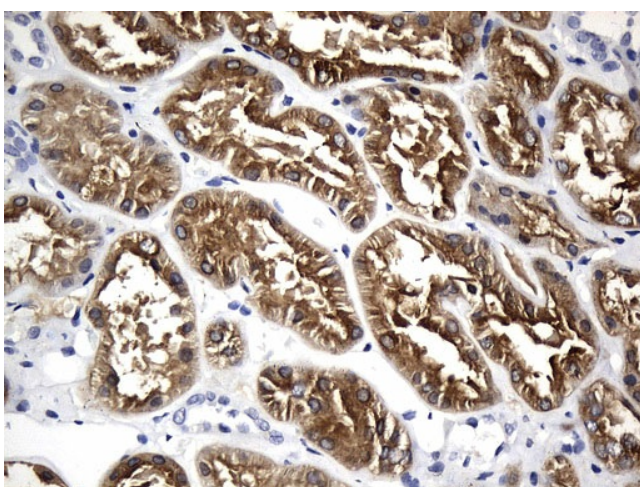
Product Type:	Primary Antibodies
Clone Name:	UMAB239
Applications:	IHC, WB
Recommended Dilution:	IHC 1:300
Reactivity:	Human, Mouse, Rat
Host:	Mouse
Isotype:	IgG1
Clonality:	Monoclonal
Immunogen:	Human recombinant protein fragment corresponding to amino acids 623-758 of human MAPT(NP_058519) produced in E.coli.
Formulation:	PBS (pH 7.3) containing 1% BSA, 50% glycerol and 0.02% sodium azide.
Concentration:	0.5~1.0 mg/ml (Lot Dependent)
Purification:	Purified from mouse ascites fluids or tissue culture supernatant by affinity chromatography (protein A/G)
Conjugation:	Unconjugated
Storage:	Store at -20°C as received.
Stability:	Stable for 12 months from date of receipt.
Predicted Protein Size:	78.7 kDa
Gene Name:	Homo sapiens microtubule associated protein tau (MAPT), transcript variant 1, mRNA.
Database Link:	NP_058519 Entrez Gene 17762 Mouse Entrez Gene 29477 Rat Entrez Gene 4137 Human P10636
Synonyms:	DDPAC; FTDP-17; MAPTL; MSTD; MTBT1; MTBT2; PPND; PPP1R103; TAU; tau-40
Protein Families:	Druggable Genome
Protein Pathways:	Alzheimer's disease, MAPK signaling pathway



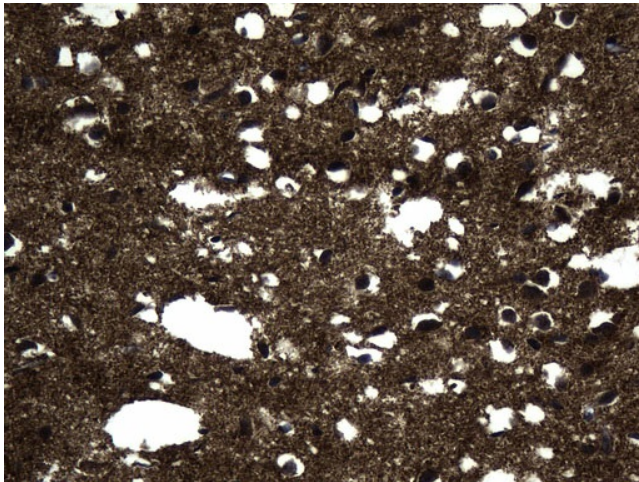
[View online »](#)

Product images:

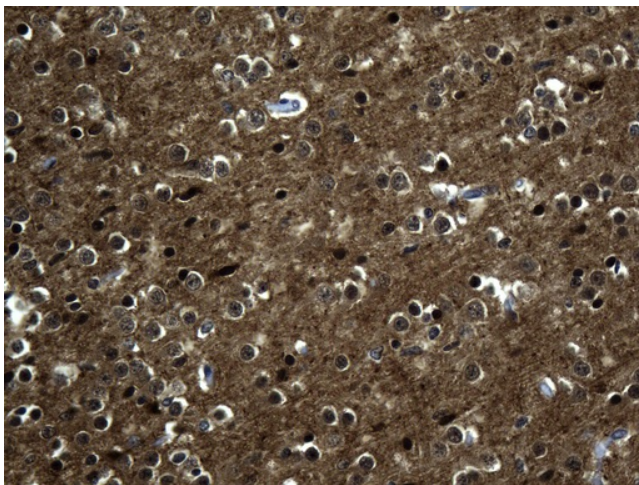
Immunohistochemical staining of paraffin-embedded Human breast tissue within the normal limits using anti-MAPT mouse monoclonal antibody. (Heat-induced epitope retrieval by 1mM EDTA in 10mM Tris buffer (pH8.5) at 120°C for 3min, [UM800131]) (1:300)



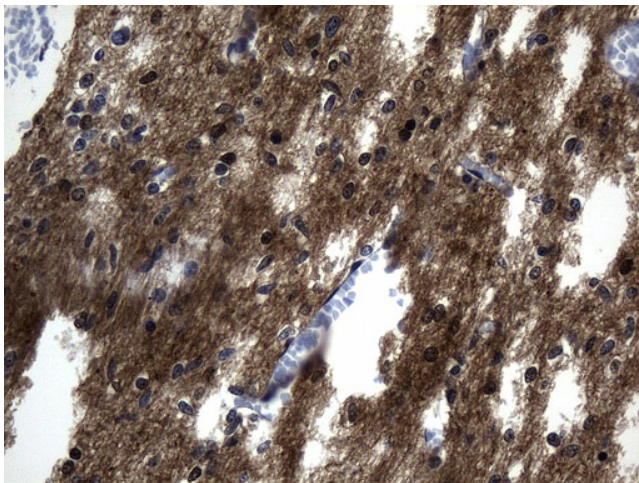
Immunohistochemical staining of paraffin-embedded Human Kidney tissue within the normal limits using anti-MAPT mouse monoclonal antibody. (Heat-induced epitope retrieval by 1mM EDTA in 10mM Tris buffer (pH8.5) at 120°C for 3min, [UM800131]) (1:300)



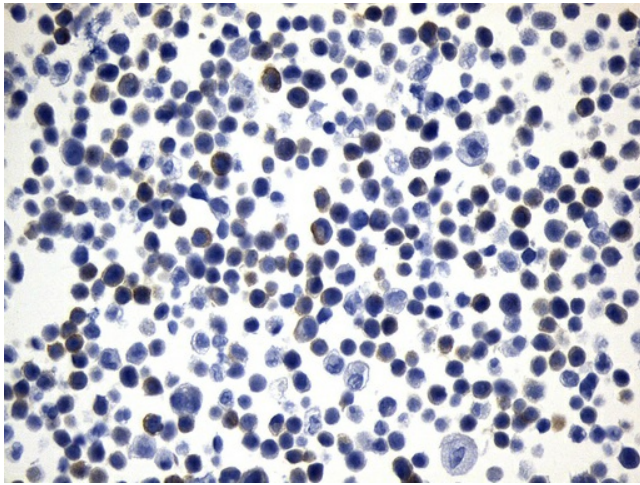
Immunohistochemical staining of paraffin-embedded Human adult brain tissue within the normal limits using anti-MAPT mouse monoclonal antibody. (Heat-induced epitope retrieval by 1mM EDTA in 10mM Tris buffer (pH8.5) at 120°C for 3min, [UM800131]) (1:300)



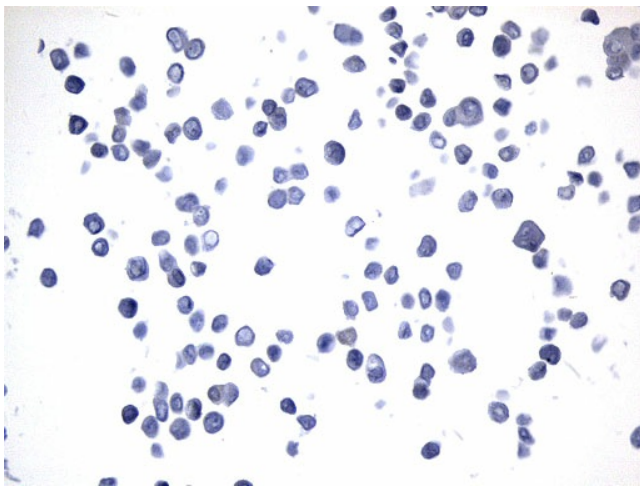
Immunohistochemical staining of paraffin-embedded Human embryonic brain cortex tissue within the normal limits using anti-MAPT mouse monoclonal antibody. (Heat-induced epitope retrieval by 1mM EDTA in 10mM Tris buffer (pH8.5) at 120°C for 3min, [UM800131]) (1:300)



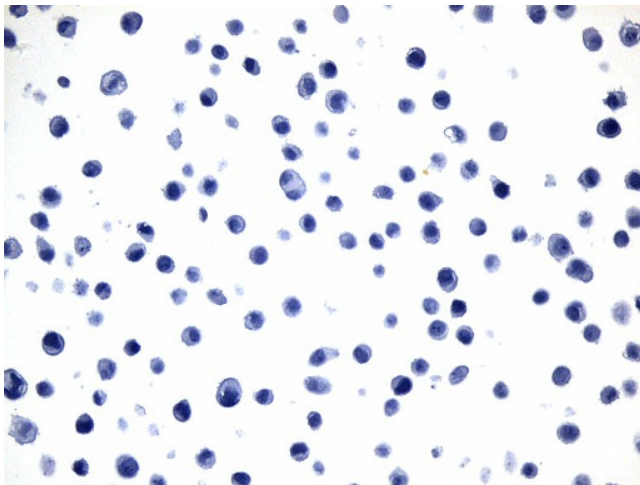
Immunohistochemical staining of paraffin-embedded Human embryonic cerebellum within the normal limits using anti-MAPT mouse monoclonal antibody. (Heat-induced epitope retrieval by 1mM EDTA in 10mM Tris buffer (pH8.5) at 120°C for 3min, [UM800131]) (1:300)



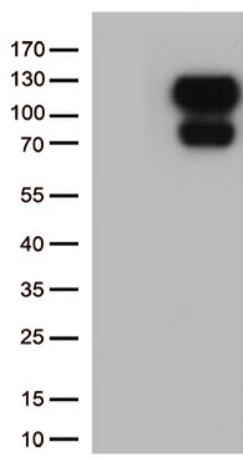
Immunohistochemical staining of paraffin-embedded MCF7 cell pellets using anti-MAPT mouse monoclonal antibody (Heat-induced epitope retrieval by 1mM EDTA in 10mM Tris buffer (pH8.0) at 120°C for 2.5 min, [UM800131]) (1:300)



Immunohistochemical staining of paraffin-embedded T-47D cell pellets using anti-MAPT mouse monoclonal antibody (Heat-induced epitope retrieval by 1mM EDTA in 10mM Tris buffer (pH8.0) at 120°C for 2.5 min, [UM800131]) (1:300)



Immunohistochemical staining of paraffin-embedded HeLa cell pellets using anti-MAPT mouse monoclonal antibody (Heat-induced epitope retrieval by 1mM EDTA in 10mM Tris buffer (pH8.0) at 120°C for 2.5 min, [UM800131]) (1:300)



HEK293T cells were transfected with the pCMV6-ENTRY control (Left lane) or pCMV6-ENTRY MAPT ([RC216166], Right lane) cDNA for 48 hrs and lysed. Equivalent amounts of cell lysates (5 ug per lane) were separated by SDS-PAGE and immunoblotted with anti-MAPT (1:500).