

Product datasheet for **UM870126**

EGFR Mouse Monoclonal Antibody [Clone ID: UMAB234]

Product data:

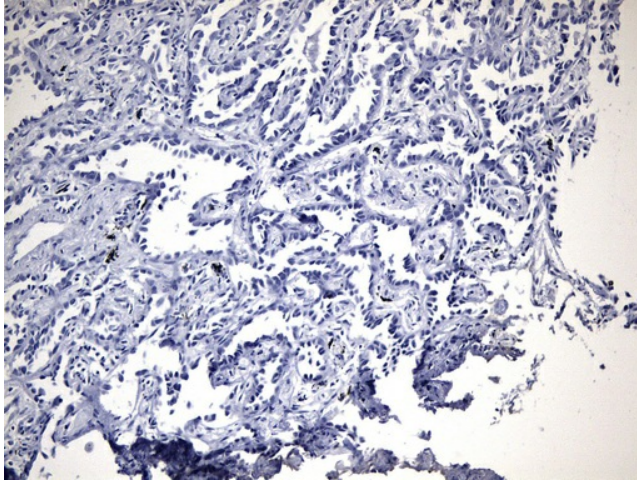
Product Type:	Primary Antibodies
Clone Name:	UMAB234
Applications:	IHC
Recommended Dilution:	IHC 1:300
Reactivity:	Human, Mouse, Rat
Host:	Mouse
Isotype:	IgG2b
Clonality:	Monoclonal
Immunogen:	Synthetic peptide around the L858R mutation region of the human EGFR conjugated to KLH
Formulation:	PBS (pH 7.3) containing 1% BSA, 50% glycerol and 0.02% sodium azide.
Concentration:	0.5~1.0 mg/ml (Lot Dependent)
Purification:	Purified from mouse ascites fluids or tissue culture supernatant by affinity chromatography (protein A/G)
Conjugation:	Unconjugated
Storage:	Store at -20°C as received.
Stability:	Stable for 12 months from date of receipt.
Gene Name:	epidermal growth factor receptor
Database Link:	NP_005219 Entrez Gene 13649 Mouse Entrez Gene 24329 Rat Entrez Gene 1956 Human P00533
Synonyms:	ERBB; ERBB1; ERBP; HER1; mENA; NISBD2; PIG61
Protein Families:	Adult stem cells, Cancer stem cells, Druggable Genome, ES Cell Differentiation/IPS, Protein Kinase, Secreted Protein, Stem cell relevant signaling - JAK/STAT signaling pathway, Transmembrane



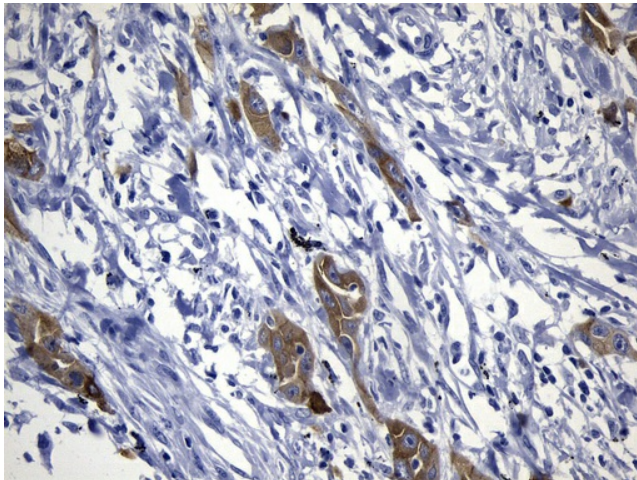
[View online »](#)

Protein Pathways:

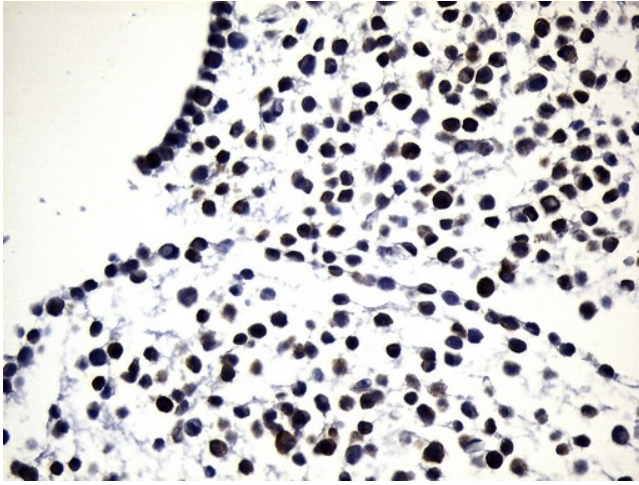
Adherens junction, Bladder cancer, Calcium signaling pathway, Colorectal cancer, Cytokine-cytokine receptor interaction, Dorso-ventral axis formation, Endocytosis, Endometrial cancer, Epithelial cell signaling in Helicobacter pylori infection, ErbB signaling pathway, Focal adhesion, Gap junction, Glioma, GnRH signaling pathway, MAPK signaling pathway, Melanoma, Non-small cell lung cancer, Pancreatic cancer, Pathways in cancer, Prostate cancer, Regulation of actin cytoskeleton

Product images:

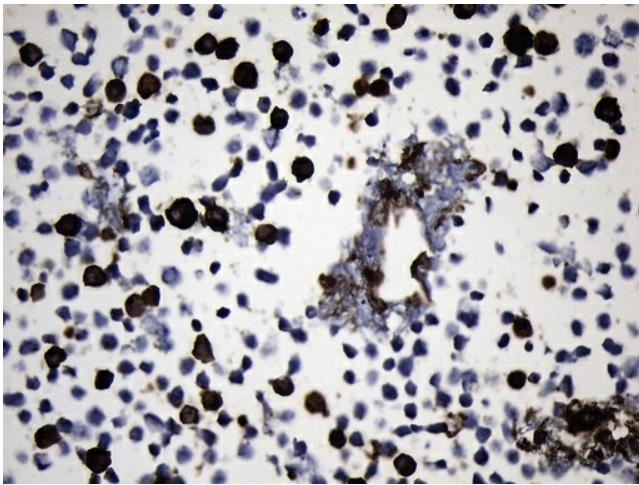
Immunohistochemical staining of paraffin-embedded EGFR L858R negative NSCLC tissue using anti-EGFR L858R mouse monoclonal antibody. (Heat-induced epitope retrieval by 1mM EDTA in 10mM Tris buffer (pH8.5) at 120°C for 3min, [UM800126]) (1:300)



Immunohistochemical staining of paraffin-embedded EGFR L858R positive NSCLC tissue using anti-EGFR L858R mouse monoclonal antibody. (Heat-induced epitope retrieval by 1mM EDTA in 10mM Tris buffer (pH8.5) at 120°C for 3min, [UM800126]) (1:300)



Immunohistochemical staining of paraffin-embedded NCI-H1975 cell pellets using anti-EGFR L858R mouse monoclonal antibody (Heat-induced epitope retrieval by 1mM EDTA in 10mM Tris buffer (pH8.0) at 120°C for 2.5 min, [UM800126]) (1:300)



Immunohistochemical staining of paraffin-embedded 293T transfected with EGFR L858R ([RC400290]) cell pellets using anti-EGFR L858R mouse monoclonal antibody (Heat-induced epitope retrieval by 1mM EDTA in 10mM Tris buffer (pH8.0) at 120°C for 2.5 min, [UM800126]) (1:300)