

Product datasheet for **UM870105**

NAPSIN A (NAPSA) Mouse Monoclonal Antibody [Clone ID: UMAB213]

Product data:

Product Type:	Primary Antibodies
Clone Name:	UMAB213
Applications:	10k-ChIP, IHC
Recommended Dilution:	IHC 1:200~40000
Reactivity:	Human
Host:	Mouse
Isotype:	IgG1
Clonality:	Monoclonal
Immunogen:	Human recombinant protein fragment corresponding to amino acids 64-244 of human NAPSA(NP_004842) produced in E.coli.
Formulation:	PBS (pH 7.3) containing 1% BSA, 50% glycerol and 0.02% sodium azide.
Concentration:	0.5~1.0 mg/ml (Lot Dependent)
Purification:	Purified from mouse ascites fluids or tissue culture supernatant by affinity chromatography (protein A/G)
Conjugation:	Unconjugated
Storage:	Store at -20°C as received.
Stability:	Stable for 12 months from date of receipt.
Predicted Protein Size:	42.7 kDa
Gene Name:	napsin A aspartic peptidase
Database Link:	NP_004842 Entrez Gene 9476 Human O96009
Background:	The activation peptides of aspartic proteinases plays role as inhibitors of the active site. These peptide segments, or pro-parts, are deemed important for correct folding, targeting, and control of the activation of aspartic proteinase zymogens. The pronapsin A gene is expressed predominantly in lung and kidney. Its translation product is predicted to be a fully functional, glycosylated aspartic proteinase precursor containing an RGD motif and an additional 18 residues at its C-terminus. [provided by RefSeq, Jul 2008]



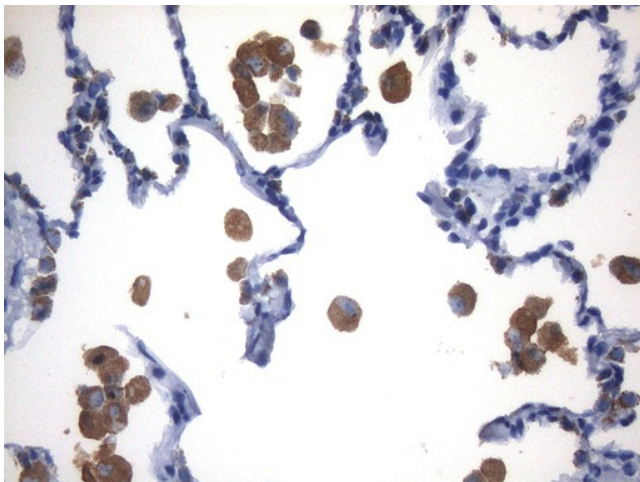
[View online »](#)

Synonyms: KAP; Kdap; NAP1; NAPA; SNAPA

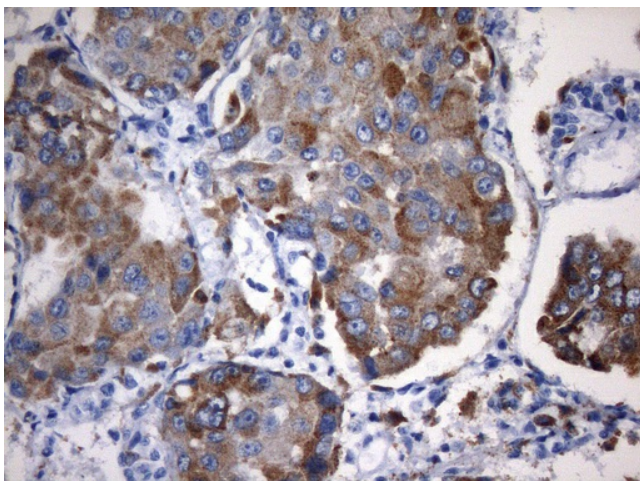
Protein Families: Druggable Genome, Protease

Protein Pathways: Lysosome

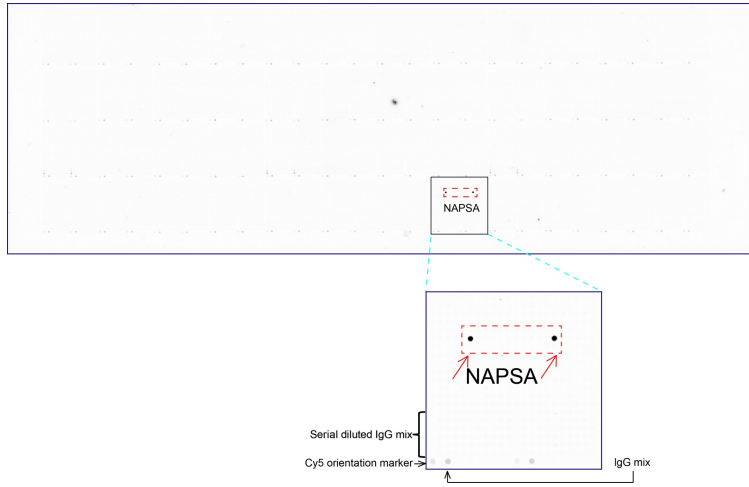
Product images:



Immunohistochemical staining of paraffin-embedded human lung tissue located within the normal limits of tumor using anti-NAPSA mouse monoclonal antibody. HIER pretreatment was with 1mM EDTA in 10mM Tris buffer (pH8.0) at 120°C for 2.5 min, [UM800105] was diluted 1:40000 and detected with HRP-DAB. Strong cytoplasmic and membrane staining seen in the macrophages and pneumocyte. Other cell types in lung are negative.



Immunohistochemical staining of paraffin-embedded carcinoma of human lung tissue using anti-NAPSA mouse monoclonal antibody. HIER pretreatment with 1mM EDTA in 10mM Tris buffer (pH8.0) at 120°C for 2.5 minutes. [UM800105] was diluted 1:40000 and detected with HRP secondary and DAB chromogen. Strong cytoplasmic and membraneous staining seen in the tumor cells.



OriGene overexpression protein microarray chip was immunostained with UltraMAB anti-NAPSA mouse monoclonal antibody ([UM800105]). The positive reactive proteins are highlighted with two red arrows in the enlarged subarray. All the positive controls spotted in this subarray are also labeled for clarification (1:200).