

Product datasheet for **UM870099**

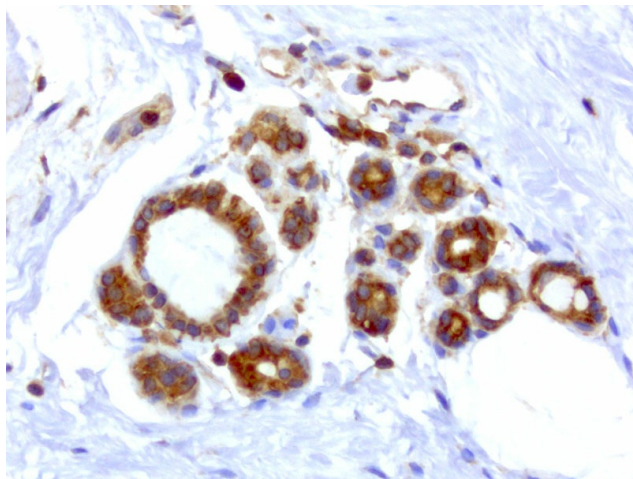
WIBG (PYM1) Mouse Monoclonal Antibody [Clone ID: UMAB207]

Product data:

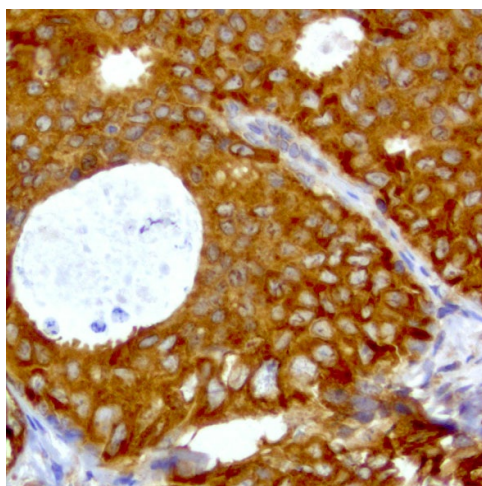
Product Type:	Primary Antibodies
Clone Name:	UMAB207
Applications:	10k-ChIP, IF, IHC, WB
Recommended Dilution:	IHC 1:100~500
Reactivity:	Human
Host:	Mouse
Isotype:	IgG1
Clonality:	Monoclonal
Immunogen:	Full length human recombinant protein of human WIBG (NP_115721) produced in HEK293T cell.
Formulation:	PBS (pH 7.3) containing 1% BSA, 50% glycerol and 0.02% sodium azide.
Concentration:	0.5~1.0 mg/ml (Lot Dependent)
Purification:	Purified from mouse ascites fluids or tissue culture supernatant by affinity chromatography (protein A/G)
Conjugation:	Unconjugated
Storage:	Store at -20°C as received.
Stability:	Stable for 12 months from date of receipt.
Predicted Protein Size:	22.5 kDa
Gene Name:	PYM homolog 1, exon junction complex associated factor
Database Link:	NP_115721 Entrez Gene 84305 Human Q9BRP8
Background:	WIBG (within bgcn homolog (Drosophila)) is a protein-coding gene. Diseases associated with WIBG include mucoepidermoid carcinoma, and tongue cancer. GO annotations related to this gene include ribosome binding and RNA binding.
Synonyms:	PYM; WIBG



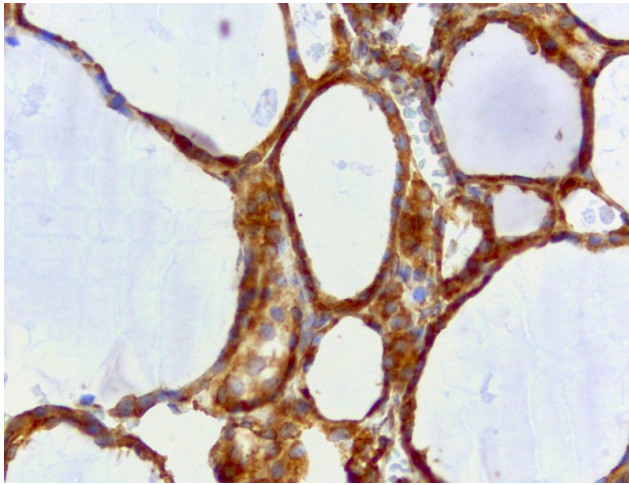
[View online »](#)

Product images:

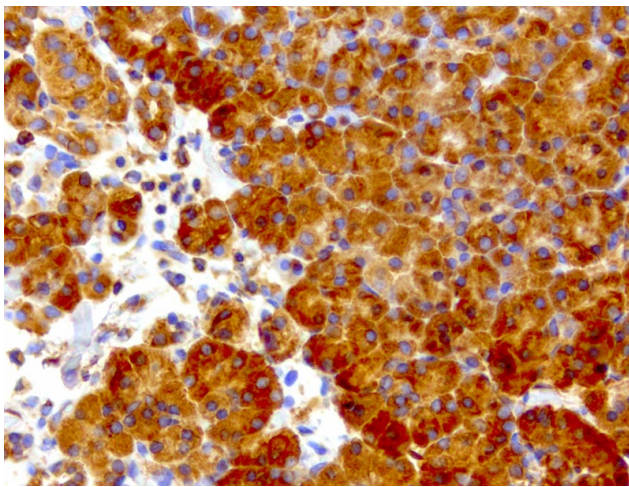
Immunohistochemical staining of paraffin-embedded normal/normal adjacent breast with mouse anti-WIBG clone UMAB207 1:400 of 1mg/mL using HIER TEE pH9.0 [GBI Labs B21-Tris/EDTA HIER]. Expression of WIBG is cytoplasmic and some nuclear in normal/normal adjacent breast tissue.



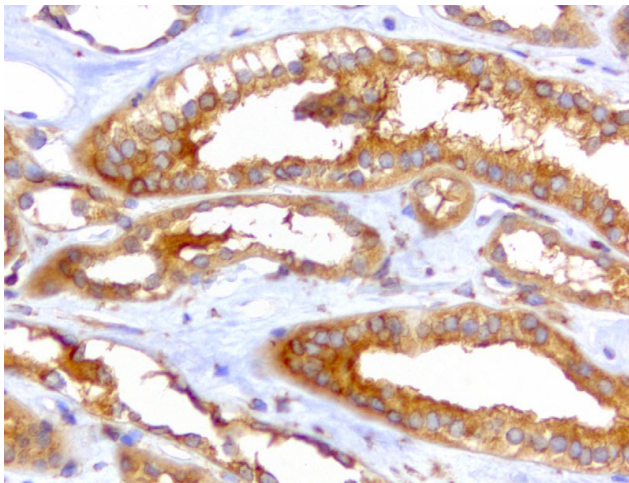
Immunohistochemical staining of paraffin-embedded breast carcinoma with mouse anti-WIBG clone UMAB207 1:400 of 1mg/mL using HIER TEE pH9.0 [GBI Labs B21-Tris/EDTA HIER]. Expression of WIBG is cytoplasmic.



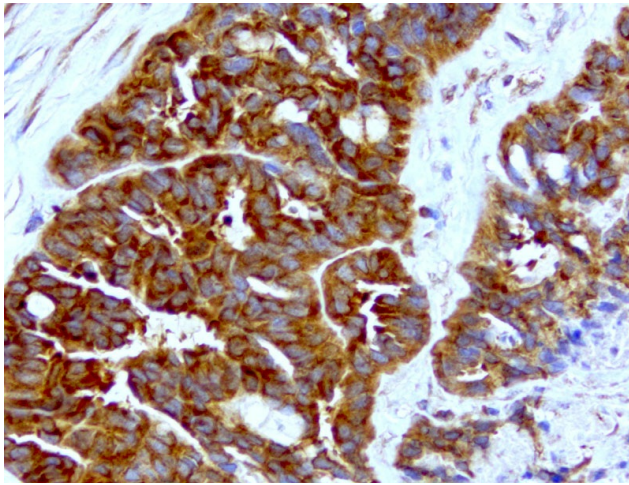
Immunohistochemical staining of paraffin-embedded thyroid with mouse anti-WIBG clone UMAB207 1:400 of 1mg/mL using HIER TEE pH9.0 [GBI Labs B21-Tris/EDTA HIER]. Expression of WIBG is cytoplasmic.



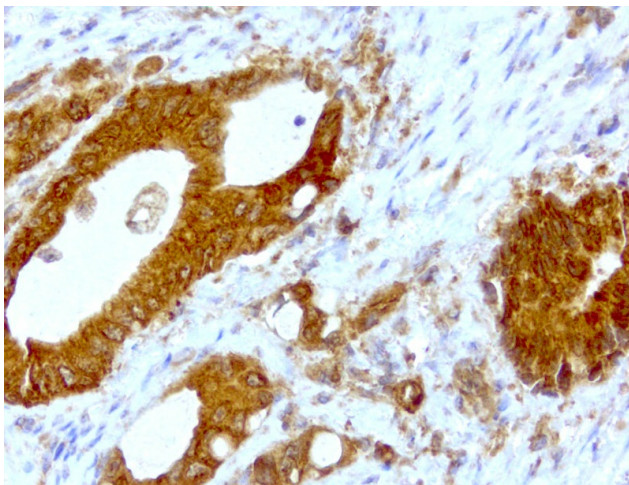
Immunohistochemical staining of paraffin-embedded pancreas with mouse anti-WIBG clone UMAB207 1:400 of 1mg/mL using HIER TEE pH9.0 [GBI Labs B21-Tris/EDTA HIER]. Expression of WIBG is cytoplasmic.



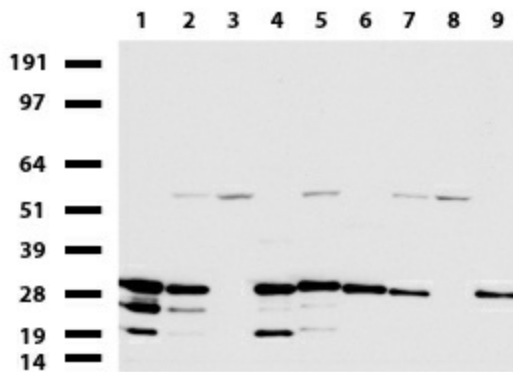
Immunohistochemical staining of paraffin-embedded kidney with mouse anti-WIBG clone UMAB207 1:400 of 1mg/mL using HIER TEE pH9.0 [GBI Labs B21-Tris/EDTA HIER]. Expression of WIBG is cytoplasmic.



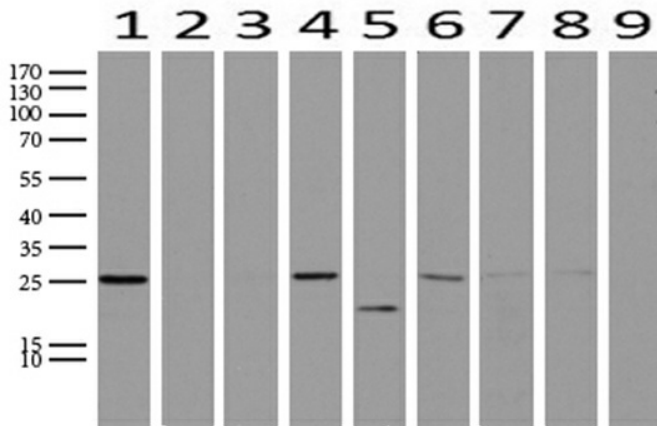
Immunohistochemical staining of paraffin-embedded ovarian cancer with mouse anti-WIBG clone UMAB207 1:400 of 1mg/mL using HIER TEE pH9.0 [GBI Labs B21-Tris/EDTA HIER]. Expression of WIBG is cytoplasmic.



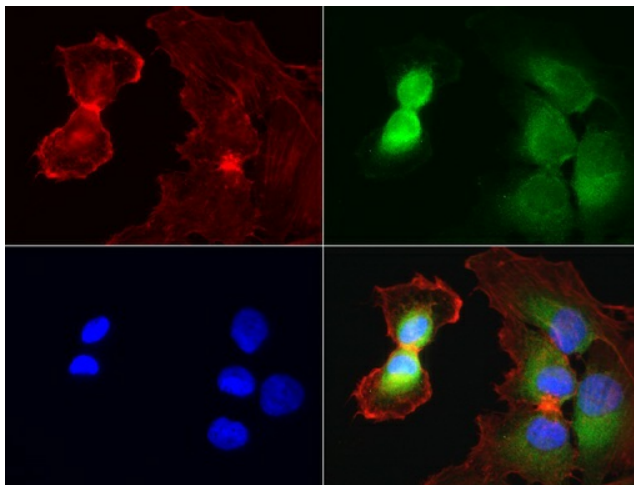
Immunohistochemical staining of paraffin-embedded colon cancer with mouse anti-WIBG clone UMAB207 1:400 of 1mg/mL using HIER TEE pH9.0 [GBI Labs B21-Tris/EDTA HIER]. Expression of WIBG is cytoplasmic.



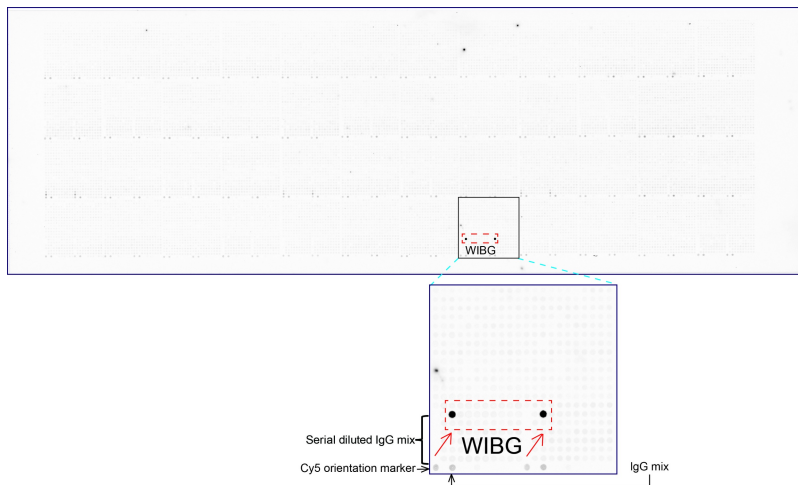
Western blot of cell lysates (35ug) from 9 different cell lines (1: HepG2, 2: HeLa, 3: SV-T2, 4: A549, 5: COS7, 6: Jurkat, 7: MDCK, 8: PC-12, 9: MCF7).



Western blot analysis of extracts (15ug) from 9 Human tissue by using anti-WIBG monoclonal antibody (1: Testis; 2: Uterus; 3: Breast; 4: Brain; 5: Liver; 6: Ovary; 7: Thyroid gland; 8: colon;;9:Spleen). (1:500 Dilution: 1:500



Immunofluorescent staining of HeLa cells using anti-WIBG mouse monoclonal antibody ([UM800099], green, 1:100). Actin filaments were labeled with Alexa Fluor® 594 Phalloidin (red), and nuclear with DAPI (blue).



OriGene overexpression protein microarray chip was immunostained with UltraMAB anti-WIBG mouse monoclonal antibody ([UM800099]). The positive reactive proteins are highlighted with two red arrows in the enlarged subarray. All the positive controls spotted in this subarray are also labeled for clarification (1:100).