

Product datasheet for **UM870080**

Cytokeratin 19 (KRT19) Mouse Monoclonal Antibody [Clone ID: UMAB188]

Product data:

Product Type:	Primary Antibodies
Clone Name:	UMAB188
Applications:	IF, IHC, WB
Recommended Dilution:	IHC 1:200
Reactivity:	Human
Host:	Mouse
Isotype:	IgG2a
Clonality:	Monoclonal
Immunogen:	Human recombinant protein fragment corresponding to amino acids 240-390 of human KRT19 (NP_002267) produced in E.coli.
Formulation:	PBS (pH 7.3) containing 1% BSA, 50% glycerol and 0.02% sodium azide.
Concentration:	0.5~1.0 mg/ml (Lot Dependent)
Purification:	Purified from mouse ascites fluids or tissue culture supernatant by affinity chromatography (protein A/G)
Conjugation:	Unconjugated
Storage:	Store at -20°C as received.
Stability:	Stable for 12 months from date of receipt.
Predicted Protein Size:	43.9 kDa
Gene Name:	keratin 19
Database Link:	NP_002267 Entrez Gene 3880 Human P08727



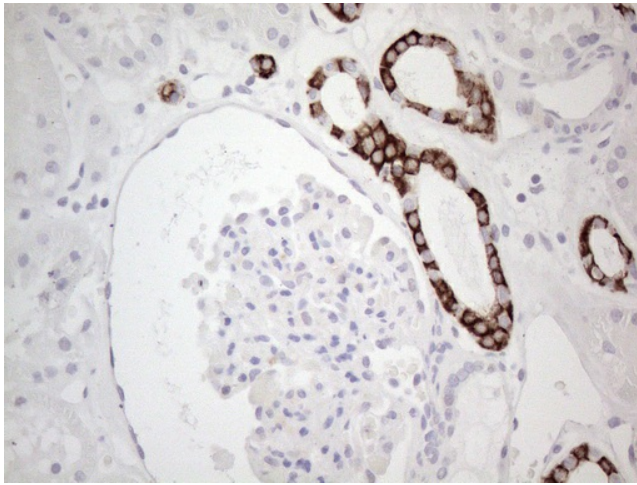
[View online »](#)

Background:

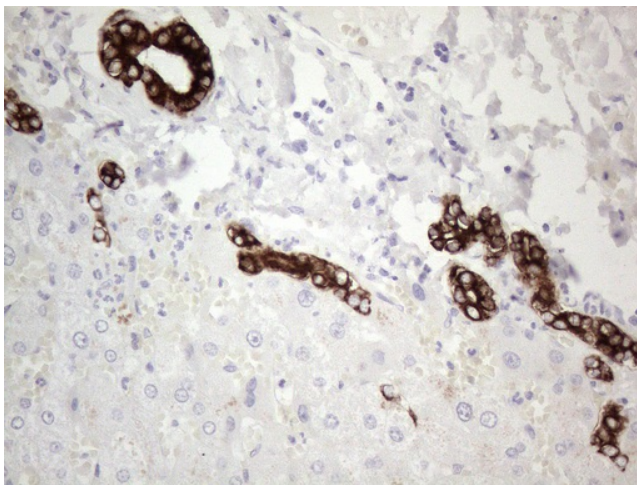
The protein encoded by this gene is a member of the keratin family. The keratins are intermediate filament proteins responsible for the structural integrity of epithelial cells and are subdivided into cytokeratins and hair keratins. The type I cytokeratins consist of acidic proteins which are arranged in pairs of heterotypic keratin chains. Unlike its related family members, this smallest known acidic cytokeratin is not paired with a basic cytokeratin in epithelial cells. It is specifically expressed in the periderm, the transiently superficial layer that envelopes the developing epidermis. The type I cytokeratins are clustered in a region of chromosome 17q12-q21. [provided by RefSeq, Jul 2008]

Synonyms:

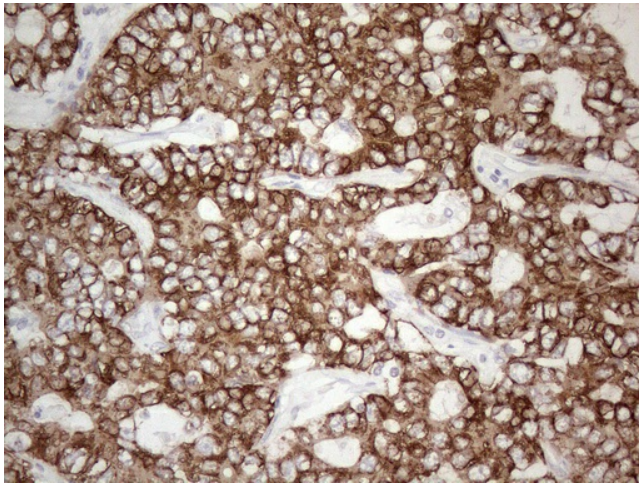
CK19; K1CS; K19

Product images:

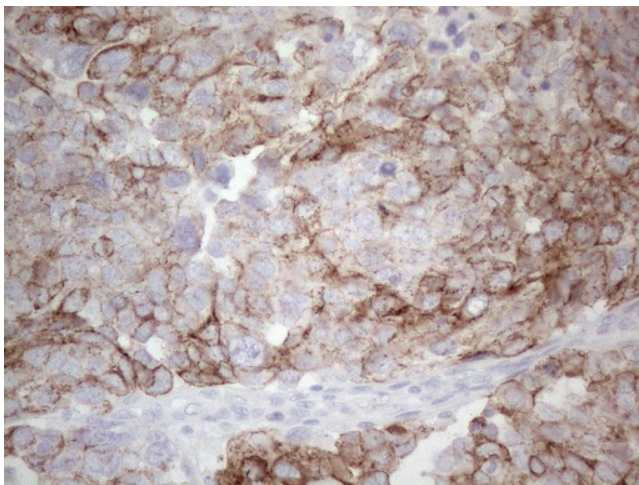
Immunohistochemical staining of paraffin-embedded Human Kidney tissue using anti-KRT19 mouse monoclonal antibody. (Heat-induced epitope retrieval by 1mM EDTA in 10mM Tris buffer (pH8.0) at 110°C for 10min, [UM800080]) (1:200)



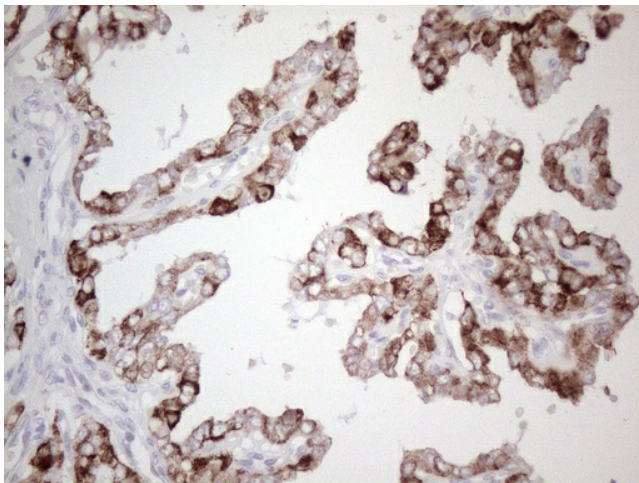
Immunohistochemical staining of paraffin-embedded Human liver tissue using anti-KRT19 mouse monoclonal antibody. (Heat-induced epitope retrieval by 1mM EDTA in 10mM Tris buffer (pH8.0) at 110°C for 10min, [UM800080]) (1:200)



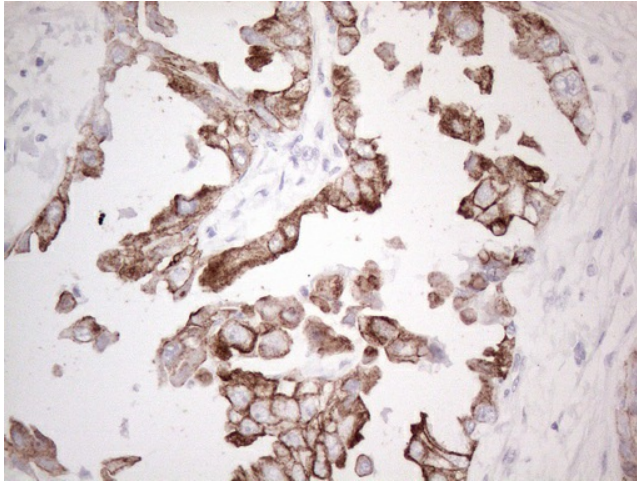
Immunohistochemical staining of paraffin-embedded Carcinoma of Human liver tissue using anti-KRT19 mouse monoclonal antibody. (Heat-induced epitope retrieval by 1mM EDTA in 10mM Tris buffer (pH8.0) at 110°C for 10min, [UM800080]) (1:200)



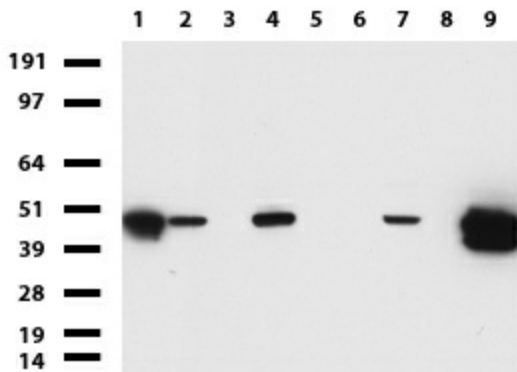
Immunohistochemical staining of paraffin-embedded Adenocarcinoma of Human ovary tissue using anti-KRT19 mouse monoclonal antibody. (Heat-induced epitope retrieval by 1mM EDTA in 10mM Tris buffer (pH8.0) at 110°C for 10min, [UM800080]) (1:200)



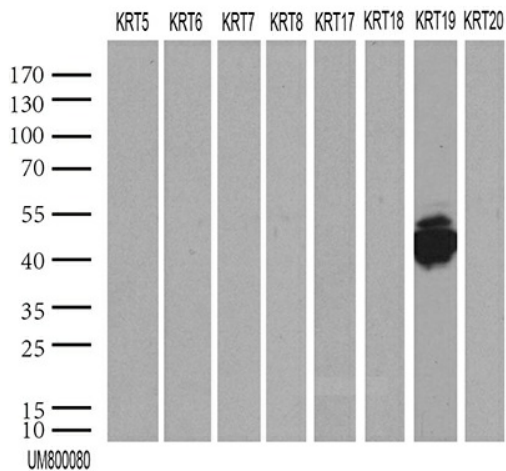
Immunohistochemical staining of paraffin-embedded Carcinoma of Human thyroid tissue using anti-KRT19 mouse monoclonal antibody. (Heat-induced epitope retrieval by 1mM EDTA in 10mM Tris buffer (pH8.0) at 110°C for 10min, [UM800080]) (1:200)



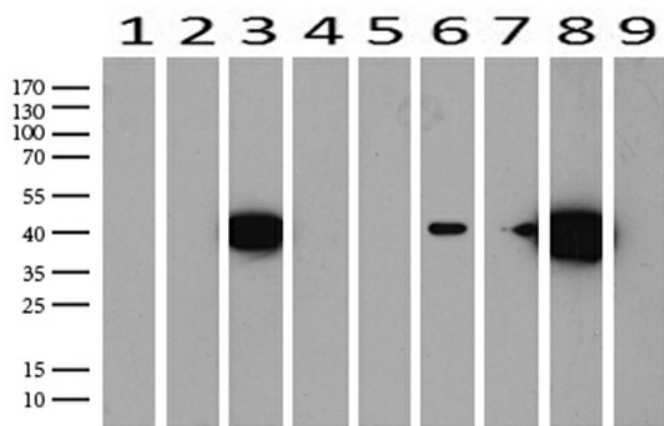
Immunohistochemical staining of paraffin-embedded Adenocarcinoma of Human endometrium tissue using anti-KRT19 mouse monoclonal antibody. (Heat-induced epitope retrieval by 1mM EDTA in 10mM Tris buffer (pH8.0) at 110°C for 10min, [UM800080]) (1:200)



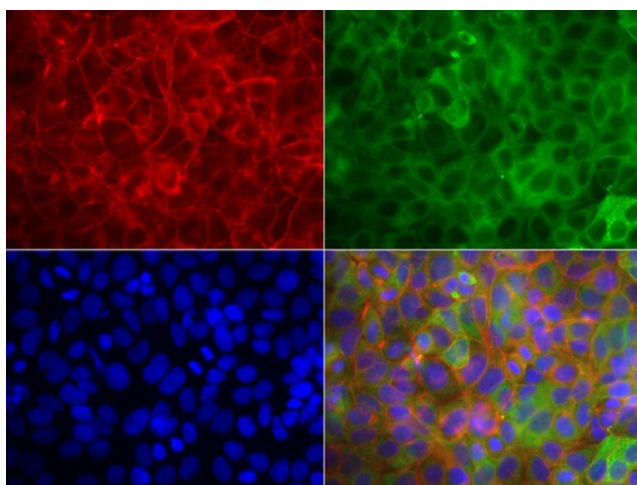
Western blot of cell lysates (35ug) from 9 different cell lines (1: HepG2, 2: HeLa, 3: SV-T2, 4: A549, 5: COS7, 6: Jurkat, 7: MDCK, 8: PC-12, 9: MCF7).



HEK293T were transfected with 55 different plasmids of CK cDNA (1, 2, 4, 5, 6a, 6b, 6c, 7, 8, 9, 12, 13, 14, 15, 16, 17, 18 v1, 18 v2, 19, 20, 24, 25, 26, 27, 28, 31, 32, 33a, 33b, 34, 35, 36, 37, 38, 39, 40, 71, 72 v1, 72 v3, 73, 74, 75, 76, 77, 78, 79, 80 v1, 80 v2, 81, 82, 83, 84, 85, 86 and 222) for 48 hrs and lysed. Cell lysates (5 ug per lane) were separated by SDS-PAGE and blotted with KRT19 antibody. Only KRT19 was positive, while all the others were negative (1:2000).



Western blot analysis of extracts (15ug) from 9 Human tissue by using anti-KRT19 monoclonal antibody (1: Testis; 2: Uterus; 3: Breast; 4: Brain; 5: Liver; 6: Ovary; 7: Thyroid gland; 8: colon;;9:Spleen). (1:500) Dilution: 1:500



Immunofluorescent staining of MCF-7 cells using anti-KRT19 mouse monoclonal antibody ([UM800080], green, 1:100). Actin filaments were labeled with Alexa Fluor® 594 Phalloidin (red), and nuclear with DAPI (blue).