

Product datasheet for **UM870068**

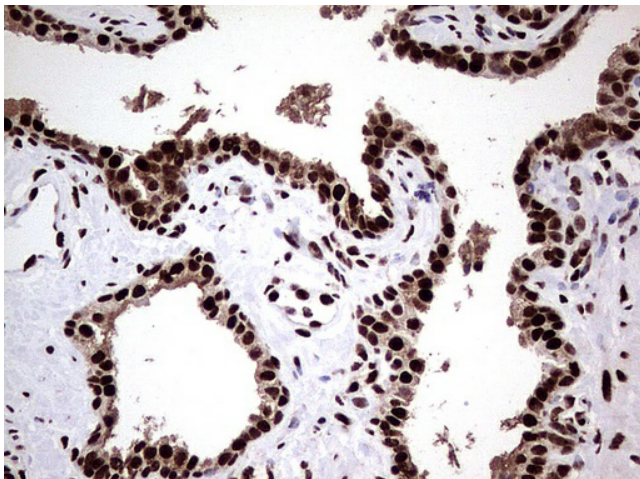
C14orf166 (RTRAF) Mouse Monoclonal Antibody [Clone ID: UMAB175]

Product data:

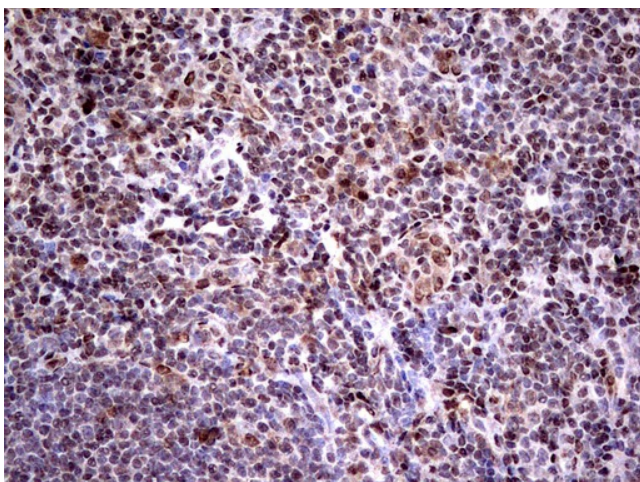
| | |
|-------------------------|---|
| Product Type: | Primary Antibodies |
| Clone Name: | UMAB175 |
| Applications: | 10k-ChIP, IF, IHC, WB |
| Recommended Dilution: | IHC 1:100~200 |
| Reactivity: | Human |
| Host: | Mouse |
| Isotype: | IgG1 |
| Clonality: | Monoclonal |
| Immunogen: | Full length human recombinant protein of human C14orf166 (NP_057123) produced in E.coli. |
| Formulation: | PBS (pH 7.3) containing 1% BSA, 50% glycerol and 0.02% sodium azide. |
| Concentration: | 0.5~1.0 mg/ml (Lot Dependent) |
| Purification: | Purified from mouse ascites fluids or tissue culture supernatant by affinity chromatography (protein A/G) |
| Conjugation: | Unconjugated |
| Storage: | Store at -20°C as received. |
| Stability: | Stable for 12 months from date of receipt. |
| Predicted Protein Size: | 27.9 kDa |
| Gene Name: | RNA transcription, translation and transport factor |
| Database Link: | NP_057123 Entrez Gene 51637 Human Q9Y224 |
| Synonyms: | CGI-99; CGI99; CLE; CLE7; hCLE1; LCRP369; RLLM1 |



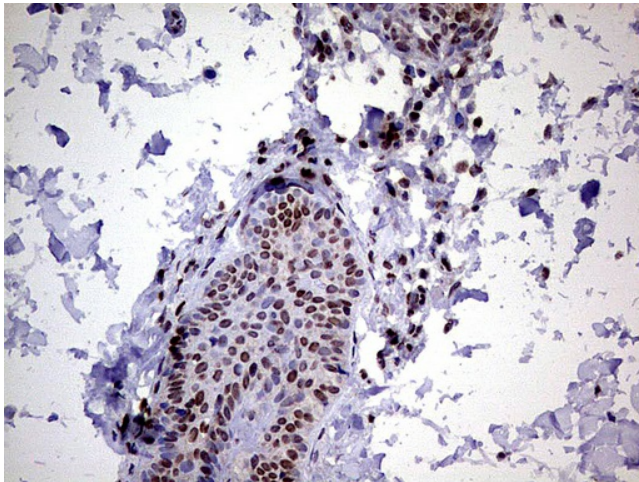
[View online »](#)

Product images:

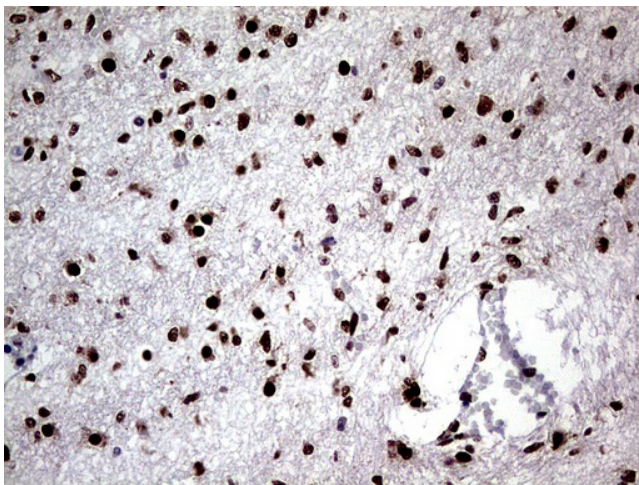
Immunohistochemical staining of paraffin-embedded Human prostate tissue using anti-C14orf166 mouse monoclonal antibody. ([UM800068]; heat-induced epitope retrieval by 1mM EDTA in 10mM Tris, pH8.5, 120°C for 3min)



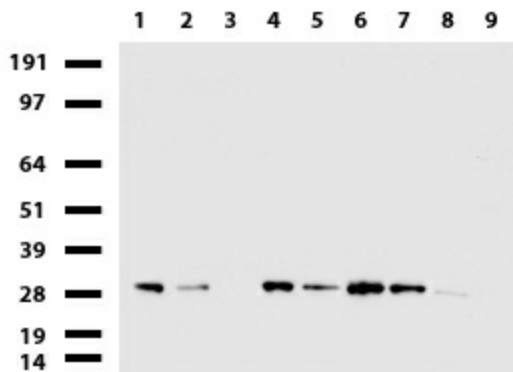
Immunohistochemical staining of paraffin-embedded Human tonsil using anti-C14orf166 mouse monoclonal antibody. ([UM800068]; heat-induced epitope retrieval by 1mM EDTA in 10mM Tris, pH8.5, 120°C for 3min)



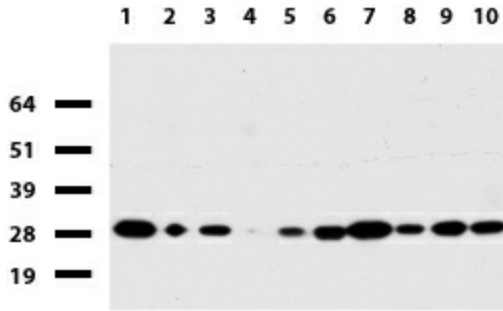
Immunohistochemical staining of paraffin-embedded Human skin tissue using anti-C14orf166 mouse monoclonal antibody. ([UM800068]; heat-induced epitope retrieval by 1mM EDTA in 10mM Tris, pH8.5, 120°C for 3min)



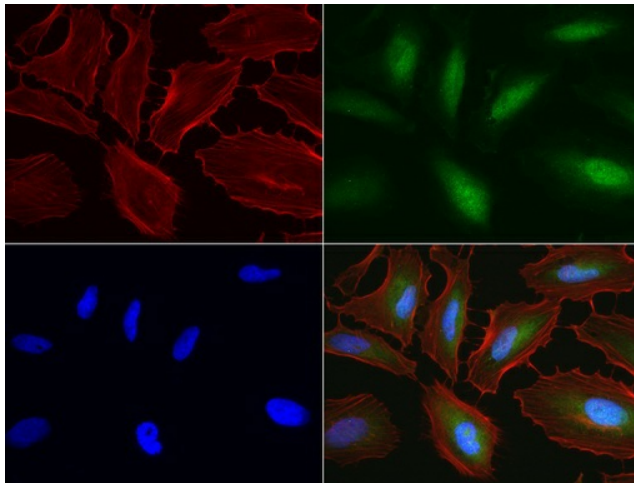
Immunohistochemical staining of paraffin-embedded Human embryonic cerebellum using anti-C14orf166 mouse monoclonal antibody. ([UM800068]; heat-induced epitope retrieval by 1mM EDTA in 10mM Tris, pH8.5, 120°C for 3min)



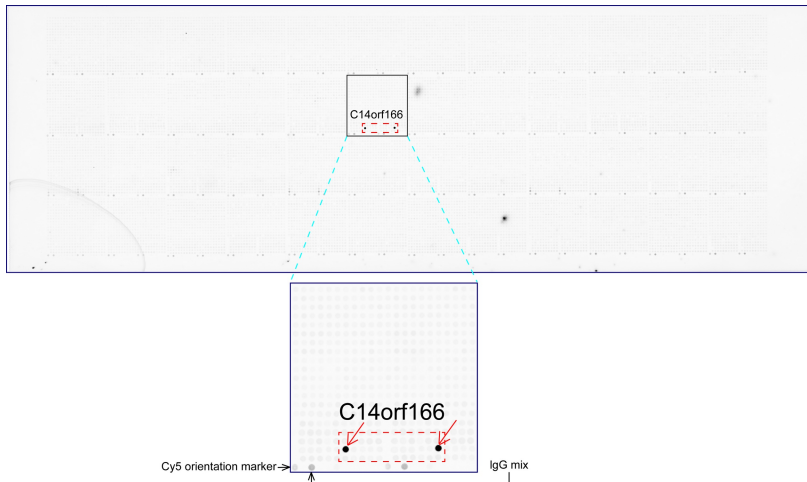
Western blot of cell lysates (35ug) from 9 different cell lines (1: HepG2, 2: HeLa, 3: SV-T2, 4: A549, 5: Jurkat, 6: MDCK, 7: COS7, 8: PC-12, 9: MCF7).



Western blot of human tissue lysates (15ug) from 10 different tissues (1: Testis, 2: Omentum, 3: Uterus, 4: Breast, 5: Brain, 6: Liver, 7: Ovary, 8: Thyroid, 9: Colon, 10: Spleen). Dilution: 1:500.



Immunofluorescent staining of HeLa cells using anti-C14orf166 mouse monoclonal antibody ([UM800068], green, 1:100). Actin filaments were labeled with Alexa Fluor® 594 Phalloidin (red), and nuclear with DAPI (blue).



OriGene overexpression protein microarray chip was immunostained with UltraMAB anti-C14orf166 mouse monoclonal antibody ([UM800068]). The positive reactive proteins are highlighted with two red arrows in the enlarged subarray. All the positive controls spotted in this subarray are also labeled for clarification.