

## Product datasheet for **UM870061**

### **MMP7 Mouse Monoclonal Antibody [Clone ID: UMAB168]**

#### **Product data:**

Product Type:	Primary Antibodies
Clone Name:	UMAB168
Applications:	10k-ChIP, IHC, WB
Recommended Dilution:	IHC 1:100~200
Reactivity:	Human
Host:	Mouse
Isotype:	IgG1
Clonality:	Monoclonal
Immunogen:	Human recombinant protein fragment corresponding to amino acids 95-267 of human MMP7 (NP_002414) produced in E.coli.
Formulation:	PBS (pH 7.3) containing 1% BSA, 50% glycerol and 0.02% sodium azide.
Concentration:	0.5~1.0 mg/ml (Lot Dependent)
Purification:	Purified from mouse ascites fluids or tissue culture supernatant by affinity chromatography (protein A/G)
Conjugation:	Unconjugated
Storage:	Store at -20°C as received.
Stability:	Stable for 12 months from date of receipt.
Predicted Protein Size:	19.1 kDa
Gene Name:	matrix metalloproteinase 7
Database Link:	<a href="#">NP_002414</a> <a href="#">Entrez Gene 4316 Human</a> <a href="#">P09237</a>



[View online »](#)

**Background:**

Proteins of the matrix metalloproteinase (MMP) family are involved in the breakdown of extracellular matrix in normal physiological processes, such as embryonic development, reproduction, and tissue remodeling, as well as in disease processes, such as arthritis and metastasis. Most MMP's are secreted as inactive proproteins which are activated when cleaved by extracellular proteinases. The enzyme encoded by this gene degrades proteoglycans, fibronectin, elastin and casein and differs from most MMP family members in that it lacks a conserved C-terminal protein domain. The enzyme is involved in wound healing, and studies in mice suggest that it regulates the activity of defensins in intestinal mucosa. The gene is part of a cluster of MMP genes which localize to chromosome 11q22.3. [provided by RefSeq, Jul 2008]

**Synonyms:**

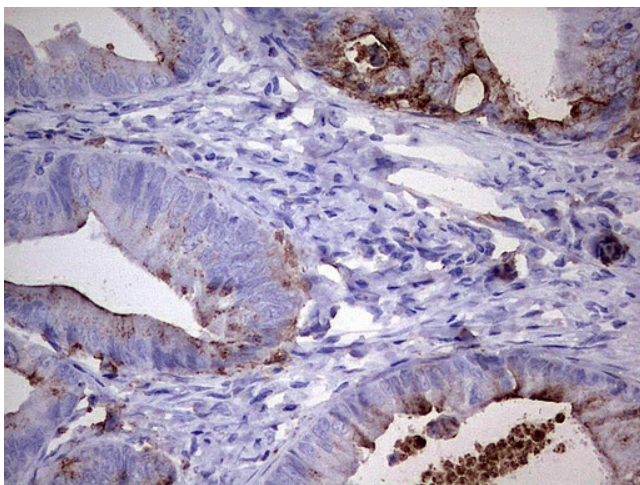
MMP-7; MPSL1; PUMP-1

**Protein Families:**

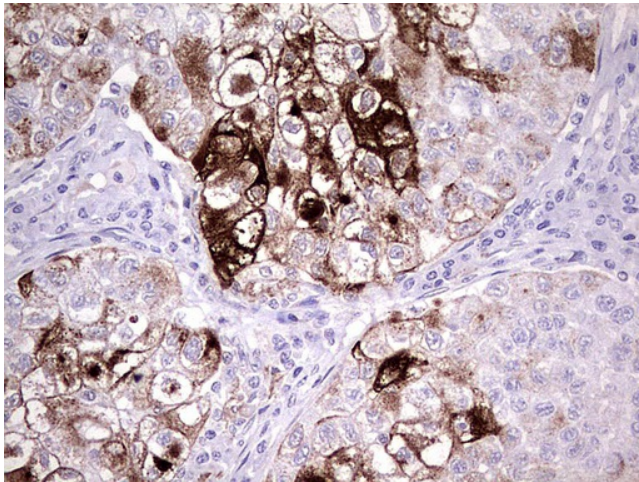
Druggable Genome, Protease

**Protein Pathways:**

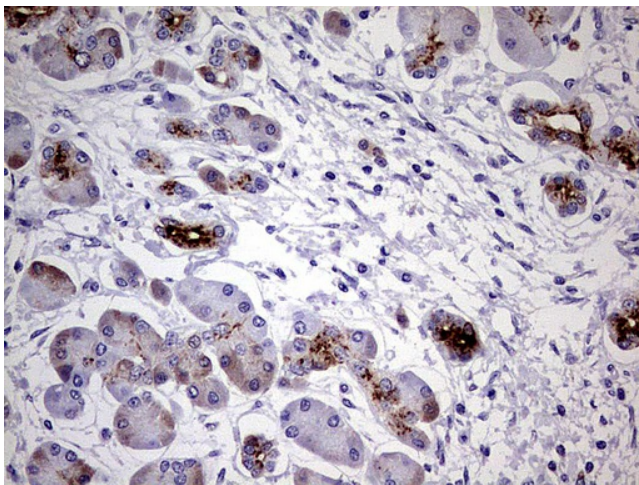
Wnt signaling pathway

**Product images:**

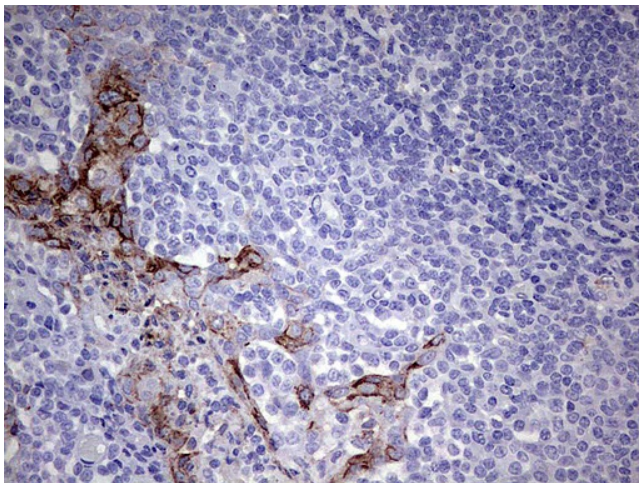
Immunohistochemical staining of paraffin-embedded Adenocarcinoma of Human colon tissue using anti-MMP7 mouse monoclonal antibody. ([UM800061]; heat-induced epitope retrieval by 1mM EDTA in 10mM Tris, pH8.0, 120°C for 3min)



Immunohistochemical staining of paraffin-embedded Carcinoma of Human lung tissue using anti-MMP7 mouse monoclonal antibody. ([UM800061]; heat-induced epitope retrieval by 1mM EDTA in 10mM Tris, pH8.0, 120°C for 3min)

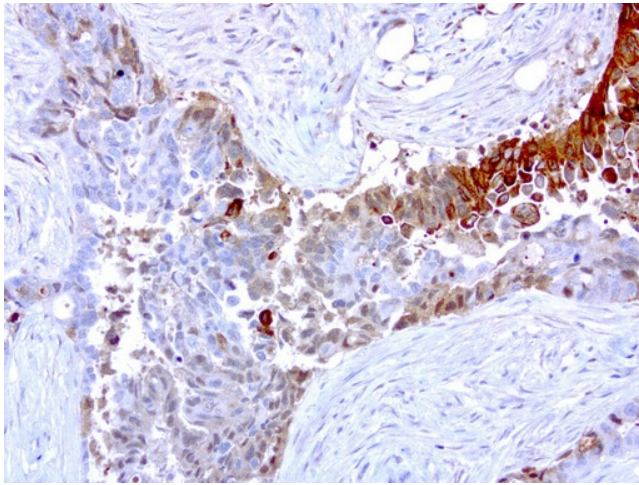


Immunohistochemical staining of paraffin-embedded Carcinoma of Human pancreas tissue using anti-MMP7 mouse monoclonal antibody. ([UM800061]; heat-induced epitope retrieval by 1mM EDTA in 10mM Tris, pH8.0, 120°C for 3min)

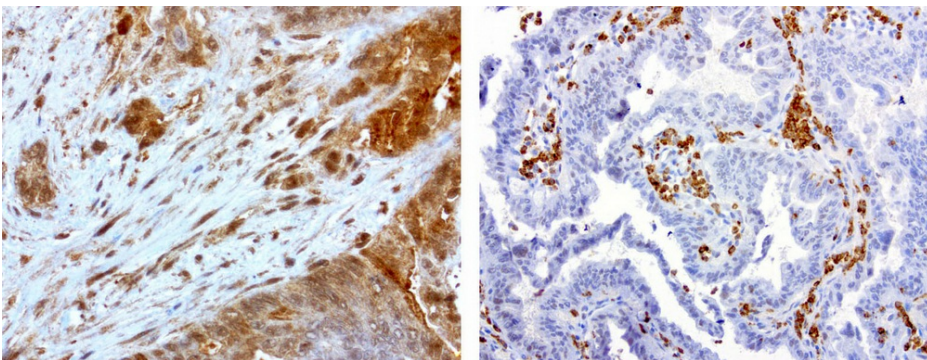


Immunohistochemical staining of paraffin-embedded Human tonsil using anti-MMP7 mouse monoclonal antibody. ([UM800061]; heat-induced epitope retrieval by 1mM EDTA in 10mM Tris, pH8.0, 120°C for 3min)

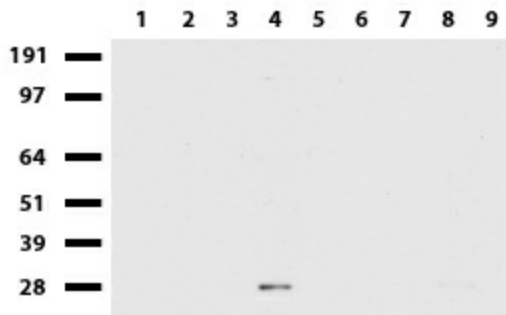




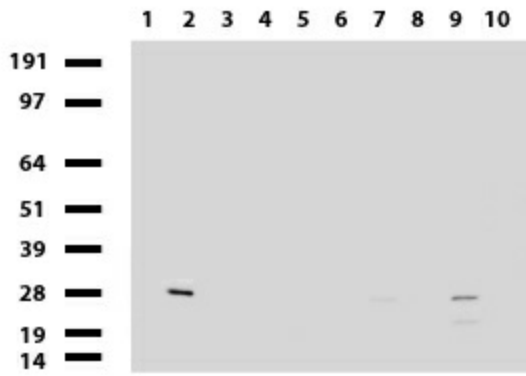
Immunohistochemical staining of paraffin-embedded human endometrial carcinoma using anti-MMP7 clone UMAB168 mouse monoclonal antibody at 1:200 dilution 1mg/mL and detection with Polink2 Broad HRP DAB. [UM800061] requires heat-induced epitope retrieval with EDTA pH 8.0 in a pressure cooker for 3 minutes at 110C. The image shows strong membranous and cytoplasmic staining in the tumor cells.



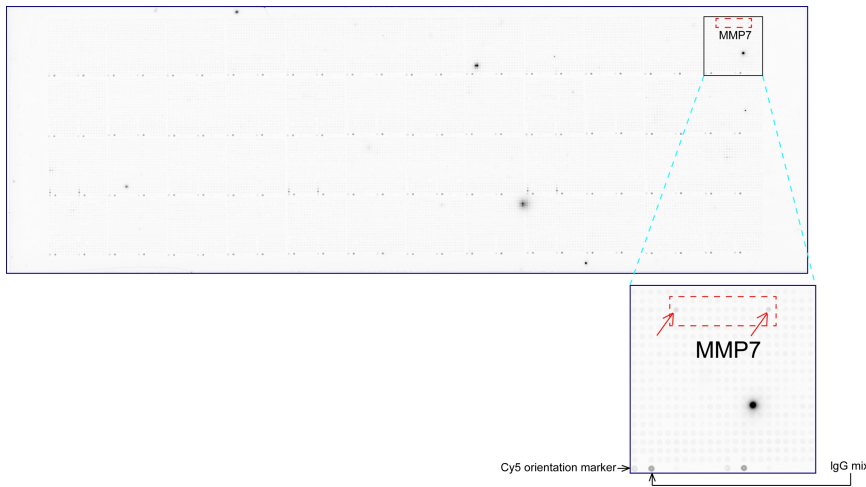
Immunohistochemical staining of paraffin-embedded human gastric tumor using anti-MMP7 clone UMAB168 mouse monoclonal antibody at 1:200 dilution 1mg/mL and detection with Polink2 Broad HRP DAB. [UM800061] requires heat-induced epitope retrieval with EDTA pH 8.0 in a pressure cooker for 3 minutes at 110C. The composite image shows two tumors with membranous and cytoplasmic staining in the tumor cells.



Western blot of cell lysates (35ug) from 9 different cell lines (1: HepG2, 2: HeLa, 3: SV-T2, 4: A549, 5: COS7, 6: Jurkat, 7: PC-12, 8: MDCK, 9: MCF7). Dilution: 1:500



Western blot of human tissue lysates (15ug) from 10 different tissues (1: Testis, 2: Omentum, 3: Uterus, 4: Breast, 5: Brain, 6: Liver, 7: Ovary, 8: Thyroid, 9: Colon, 10: Spleen). Dilution: 1:500.



OriGene overexpression protein microarray chip was immunostained with UltraMAB anti-MMP7 mouse monoclonal antibody ([UM800061]). The positive reactive proteins are highlighted with two red arrows in the enlarged subarray. All the positive controls spotted in this subarray are also labeled for clarification.