

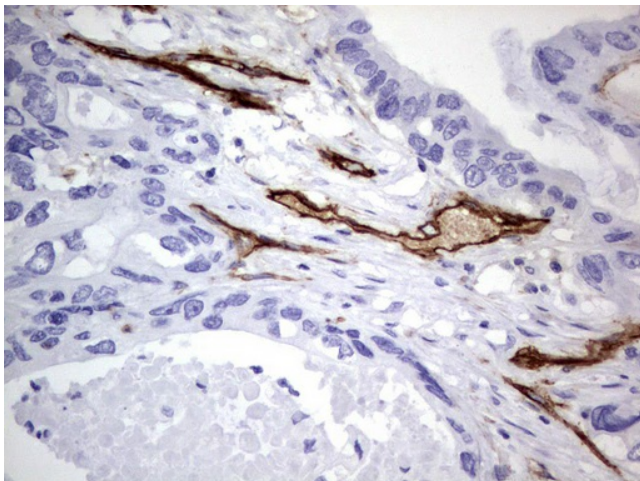
Product datasheet for **UM870052**

CD146 (MCAM) Mouse Monoclonal Antibody [Clone ID: UMAB155]

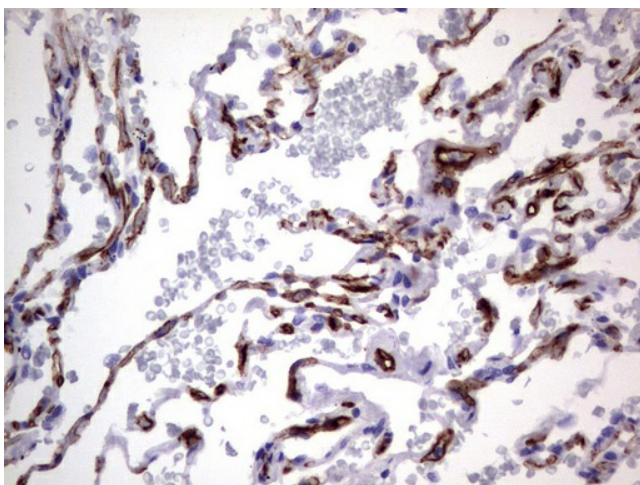
Product data:

Product Type:	Primary Antibodies
Clone Name:	UMAB155
Applications:	IHC, WB
Recommended Dilution:	WB 1:2000, IHC 1:200
Reactivity:	Human
Host:	Mouse
Isotype:	IgG2b
Clonality:	Monoclonal
Immunogen:	Full length human recombinant protein of human MCAM (NP_006491) produced in HEK293T cell.
Formulation:	PBS (pH 7.3) containing 1% BSA, 50% glycerol and 0.02% sodium azide.
Concentration:	0.5~1.0 mg/ml (Lot Dependent)
Purification:	Purified from mouse ascites fluids or tissue culture supernatant by affinity chromatography (protein A/G)
Conjugation:	Unconjugated
Storage:	Store at -20°C as received.
Stability:	Stable for 12 months from date of receipt.
Gene Name:	melanoma cell adhesion molecule
Database Link:	NP_006491 Entrez Gene 4162 Human P43121
Synonyms:	CD146; MUC18
Protein Families:	Druggable Genome, ES Cell Differentiation/IPS, Transmembrane

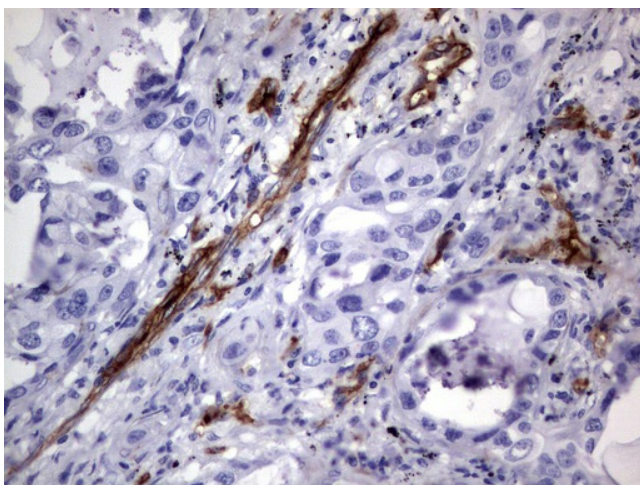
[View online »](#)

Product images:

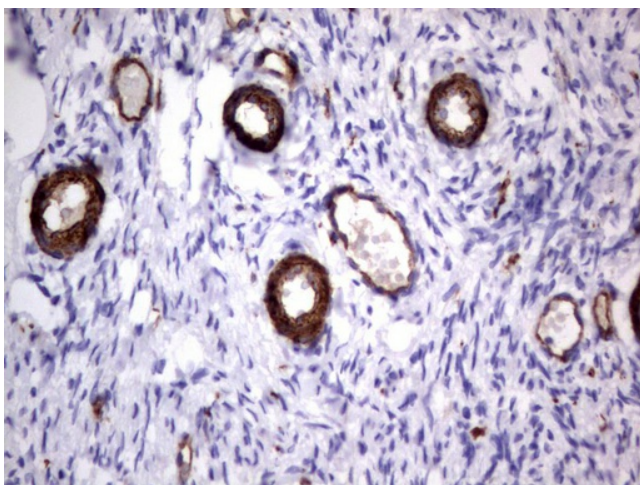
Immunohistochemical staining of paraffin-embedded Adenocarcinoma of Human colon tissue using anti-MCAM mouse monoclonal antibody. ([UM800052]; heat-induced epitope retrieval by 1mM EDTA in 10mM Tris, pH9.0, 120°C for 3min)



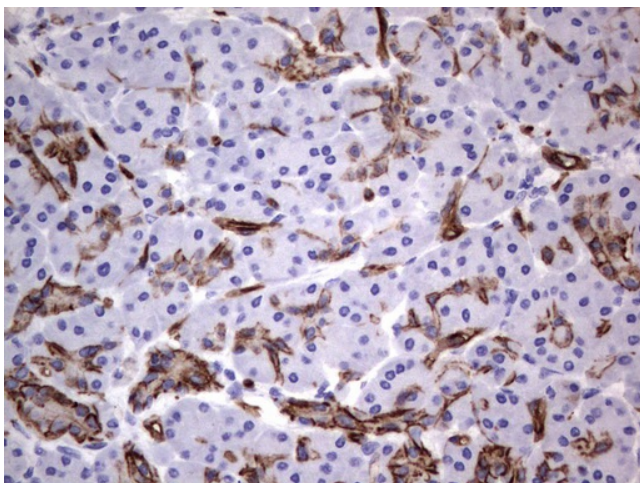
Immunohistochemical staining of paraffin-embedded Human lung tissue using anti-MCAM mouse monoclonal antibody. ([UM800052]; heat-induced epitope retrieval by 1mM EDTA in 10mM Tris, pH9.0, 120°C for 3min)



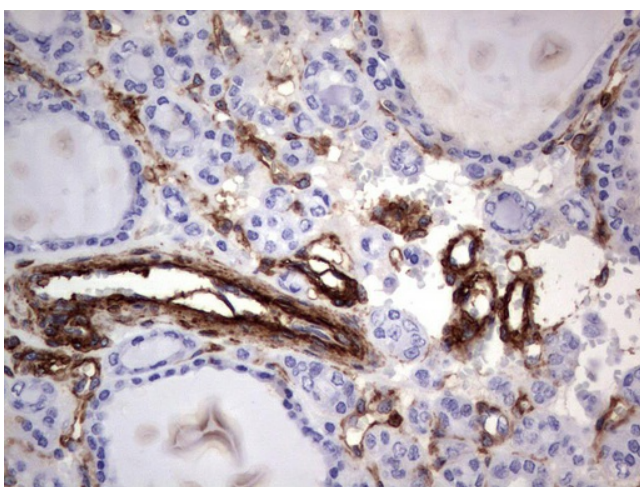
Immunohistochemical staining of paraffin-embedded Carcinoma of Human lung tissue using anti-MCAM mouse monoclonal antibody. ([UM800052]; heat-induced epitope retrieval by 1mM EDTA in 10mM Tris, pH9.0, 120°C for 3min)



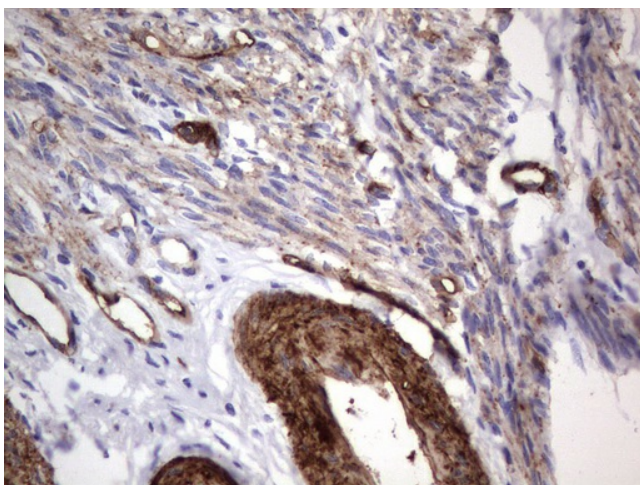
Immunohistochemical staining of paraffin-embedded Human Ovary tissue using anti-MCAM mouse monoclonal antibody. ([UM800052]; heat-induced epitope retrieval by 1mM EDTA in 10mM Tris, pH9.0, 120°C for 3min)



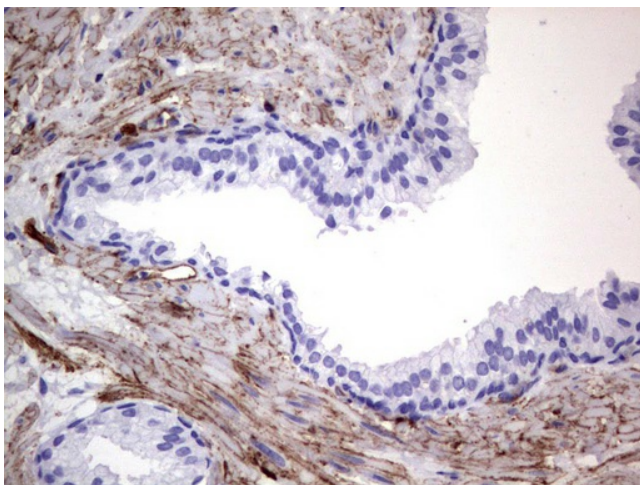
Immunohistochemical staining of paraffin-embedded Human pancreas tissue using anti-MCAM mouse monoclonal antibody. ([UM800052]; heat-induced epitope retrieval by 1mM EDTA in 10mM Tris, pH9.0, 120°C for 3min)



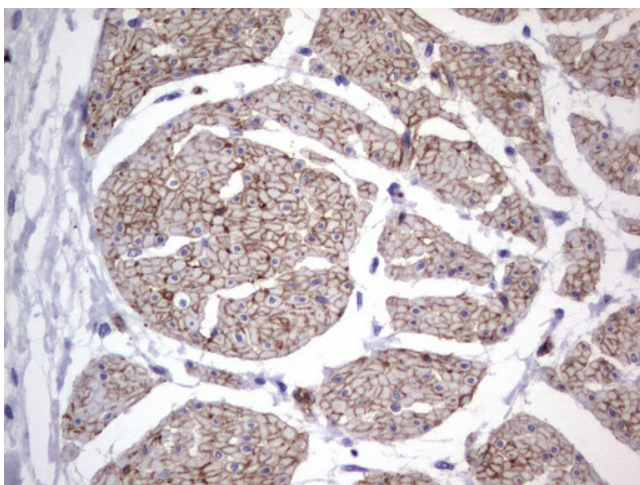
Immunohistochemical staining of paraffin-embedded Carcinoma of Human thyroid tissue using anti-MCAM mouse monoclonal antibody. ([UM800052]; heat-induced epitope retrieval by 1mM EDTA in 10mM Tris, pH9.0, 120°C for 3min)



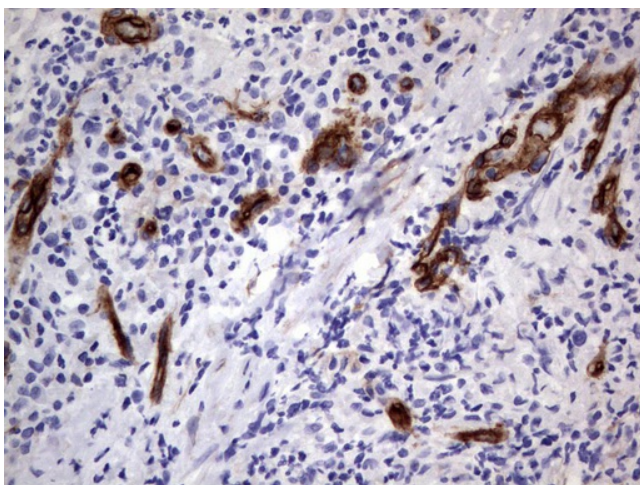
Immunohistochemical staining of paraffin-embedded Human endometrium tissue using anti-MCAM mouse monoclonal antibody. ([UM800052]; heat-induced epitope retrieval by 1mM EDTA in 10mM Tris, pH9.0, 120°C for 3min)



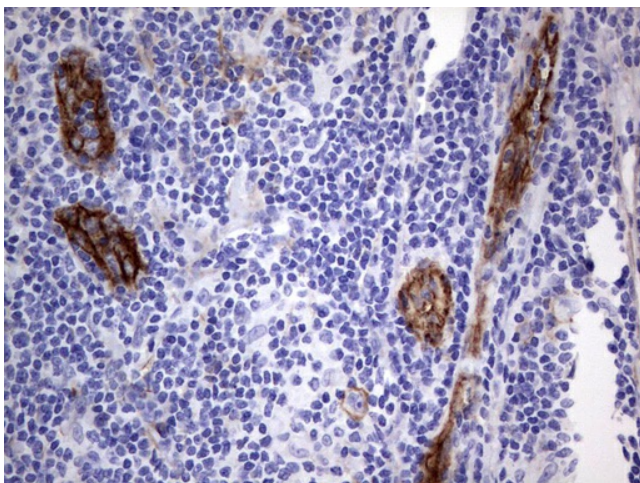
Immunohistochemical staining of paraffin-embedded Carcinoma of Human prostate tissue using anti-MCAM mouse monoclonal antibody. ([UM800052]; heat-induced epitope retrieval by 1mM EDTA in 10mM Tris, pH9.0, 120°C for 3min)



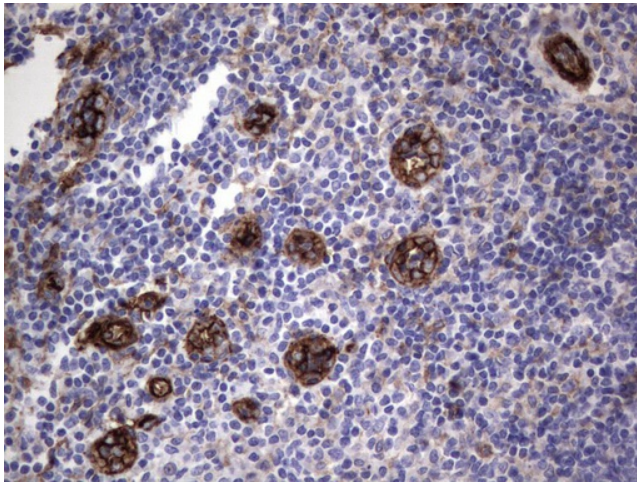
Immunohistochemical staining of paraffin-embedded Human bladder tissue using anti-MCAM mouse monoclonal antibody. (UM800052); heat-induced epitope retrieval by 1mM EDTA in 10mM Tris, pH9.0, 120°C for 3min)



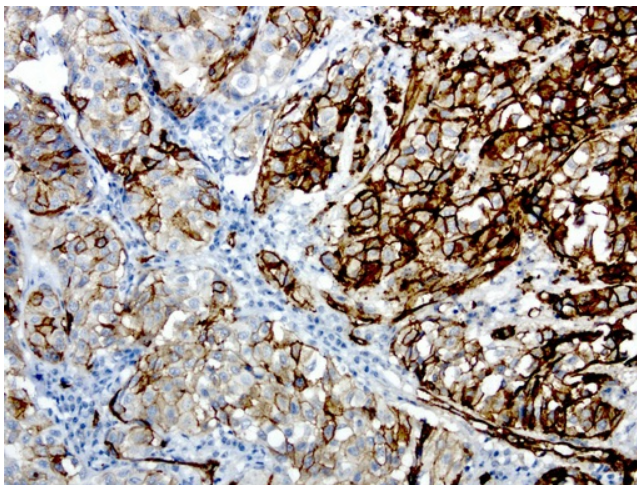
Immunohistochemical staining of paraffin-embedded Human lymph node tissue using anti-MCAM mouse monoclonal antibody. (UM800052); heat-induced epitope retrieval by 1mM EDTA in 10mM Tris, pH9.0, 120°C for 3min)



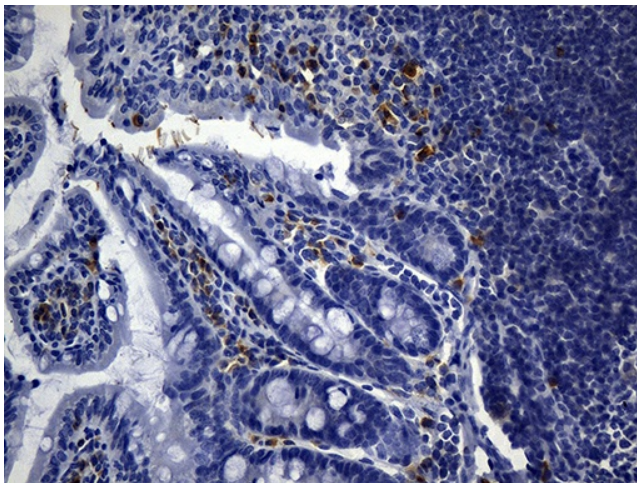
Immunohistochemical staining of paraffin-embedded Human lymphoma tissue using anti-MCAM mouse monoclonal antibody. (UM800052); heat-induced epitope retrieval by 1mM EDTA in 10mM Tris, pH9.0, 120°C for 3min)



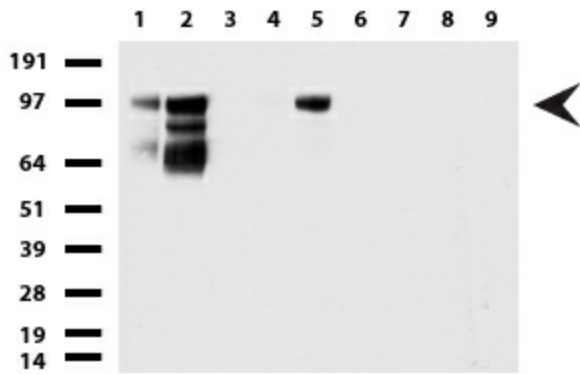
Immunohistochemical staining of paraffin-embedded Human tonsil using anti-MCAM mouse monoclonal antibody. ([UM800052]; heat-induced epitope retrieval by 1mM EDTA in 10mM Tris, pH9.0, 120°C for 3min)



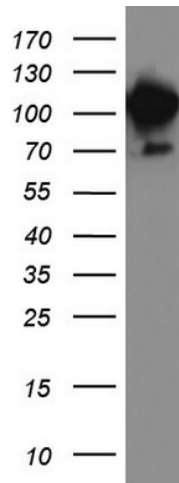
Immunohistochemical staining of paraffin-embedded human melanoma using anti-CD146 (MCAM) clone UMAB155 mouse monoclonal antibody at 1:200 dilution of 1.0 mg/mL using Polink2 Broad HRP DAB for detection. [UM800052] requires HIER with with Accel 3in1 EDTA solution pH8.7 at 110°C for 3min using pressure chamber/cooker. The tumor cells shows strong membraneous and cytoplasmic staining.



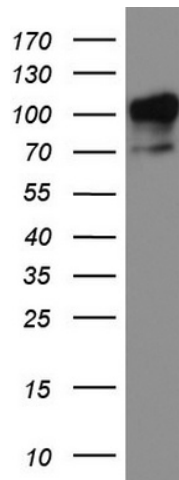
Immunohistochemical staining of paraffin-embedded mouse ascending colon tissue using anti-CD146 clone UMAB155 mouse monoclonal antibody. (Heat-induced epitope retrieval by 1mM EDTA in 10mM Tris buffer (pH8.5) at 120°C for 3min, [UM800052]) (1:300).



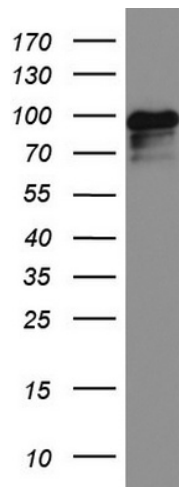
Western blot of cell lysates (35ug) from 9 different cell lines (1: HepG2, 2: HeLa, 3: SV-T2, 4: A549, 5: COS7, 6: Jurkat, 7: MDCK, 8: PC-12, 9: MCF7). Dilution: 1:500



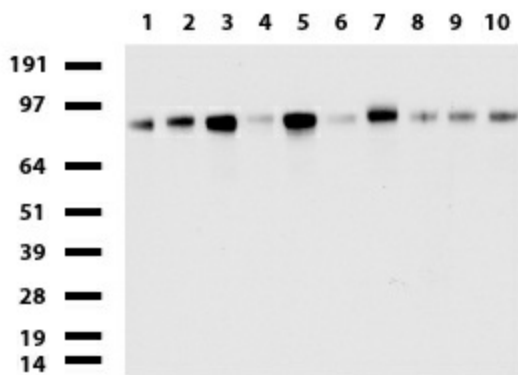
Western blot analysis of HEK293 cell lysate (35ug) by using anti-MCAM monoclonal antibody.



Western blot analysis of HeLa cell lysate (35ug) by using anti-MCAM monoclonal antibody.



Western blot analysis of MALME3M cell lysate (35ug) by using anti-MCAM monoclonal antibody.



Western blot of human tissue lysates (15ug) from 10 different tissues (1: Testis, 2: Omentum, 3: Uterus, 4: Breast, 5: Brain, 6: Liver, 7: Ovary, 8: Thyroid, 9: Colon, 10: Spleen). Dilution: 1:500.