

Product datasheet for **UM870039**

DOCK2 Mouse Monoclonal Antibody [Clone ID: UMAB142]

Product data:

Product Type:	Primary Antibodies
Clone Name:	UMAB142
Applications:	IF, IHC, WB
Recommended Dilution:	WB 1:2000, IHC 1:150
Reactivity:	Human, Mouse, Rat
Host:	Mouse
Isotype:	IgG2a
Clonality:	Monoclonal
Immunogen:	Human recombinant protein fragment corresponding to amino acids 1544-1830 of human DOCK2 (NP_004937) produced in E.coli.
Formulation:	PBS (pH 7.3) containing 1% BSA, 50% glycerol and 0.02% sodium azide.
Concentration:	0.5~1.0 mg/ml (Lot Dependent)
Purification:	Purified from mouse ascites fluids or tissue culture supernatant by affinity chromatography (protein A/G)
Conjugation:	Unconjugated
Storage:	Store at -20°C as received.
Stability:	Stable for 12 months from date of receipt.
Gene Name:	dedicator of cytokinesis 2
Database Link:	NP_004937 Entrez Gene 94176 Mouse Entrez Gene 360509 Rat Entrez Gene 1794 Human Q92608
Background:	The protein encoded by this gene belongs to the CDM protein family. It is specifically expressed in hematopoietic cells, predominantly in the peripheral blood leukocytes, and is involved in remodeling of the actin cytoskeleton required for lymphocyte migration, through the activation of RAC. Mice lacking this gene show a severe impairment in the migration and homing of lymphocytes. These mutant mice also exhibited long-term survival of allografts, suggesting that this gene may be a target for controlling transplant rejection. [provided by RefSeq, Oct 2011]



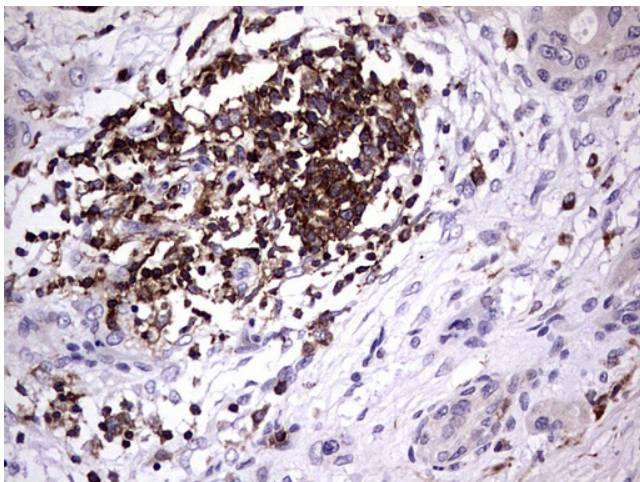
[View online »](#)

Synonyms: FLJ46592; KIAA0209

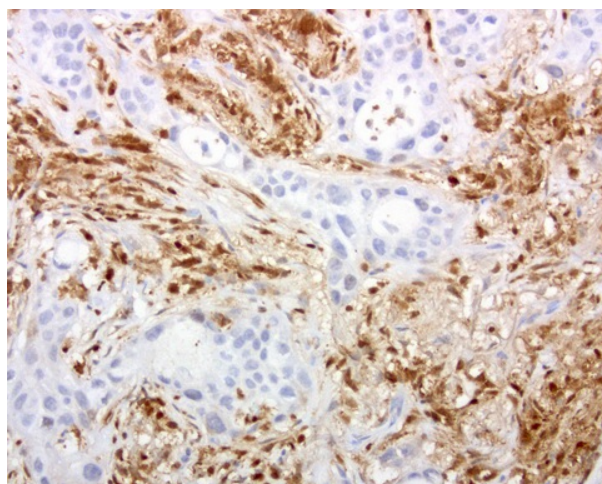
Protein Families: Druggable Genome

Protein Pathways: Chemokine signaling pathway, Fc gamma R-mediated phagocytosis

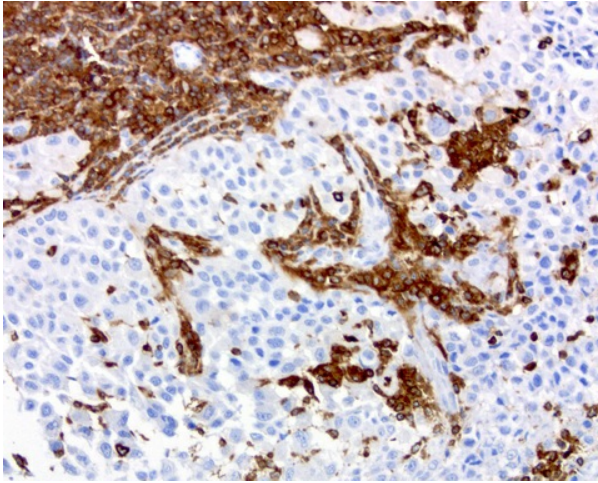
Product images:



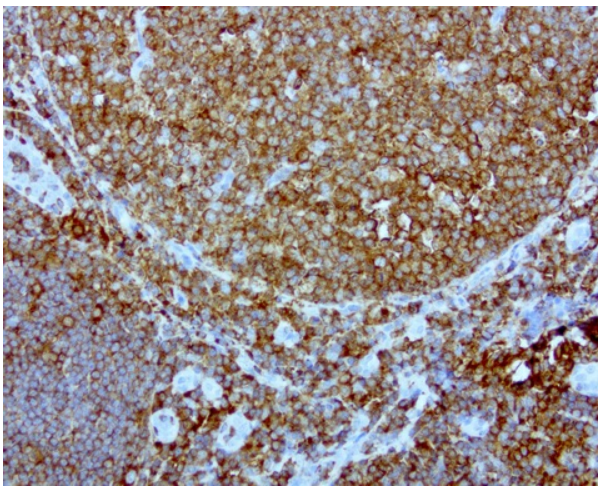
Immunohistochemical staining of paraffin-embedded Carcinoma of Human pancreas tissue using anti-DOCK2 mouse monoclonal antibody. ([UM800039]; heat-induced epitope retrieval by 1mM EDTA in 10mM Tris, pH8.5, 120°C for 3min)



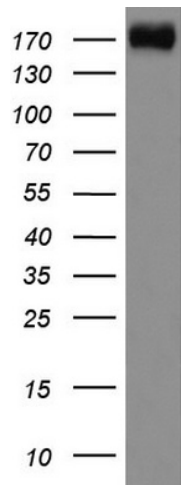
Immunohistochemical staining of paraffin-embedded human lung cancer using anti-DOCK2 clone UMAB142 mouse monoclonal antibody at 1:200 dilution of 1.0 mg/mL using Polink2 Broad HRP DAB for detection. [UM800039] requires HIER with with citrate pH6.0 at 110°C for 3min using pressure chamber/cooker. IHC staining shows tumor cells are negative however infiltrating lymphocytes strongly positive.



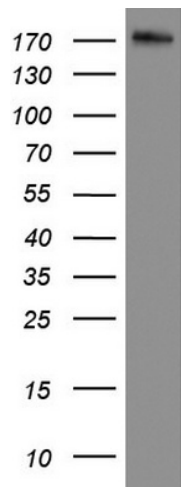
Immunohistochemical staining of paraffin-embedded human melanoma using anti-DOCK2 clone UMAB142 mouse monoclonal antibody at 1:200 dilution of 1.0 mg/mL using Polink2 Broad HRP DAB for detection. [UM800039] requires HIER with with citrate pH6.0 at 110°C for 3min using pressure chamber/cooker. IHC staining shows tumor cells are negative however infiltrating lymphocytes strongly positive.



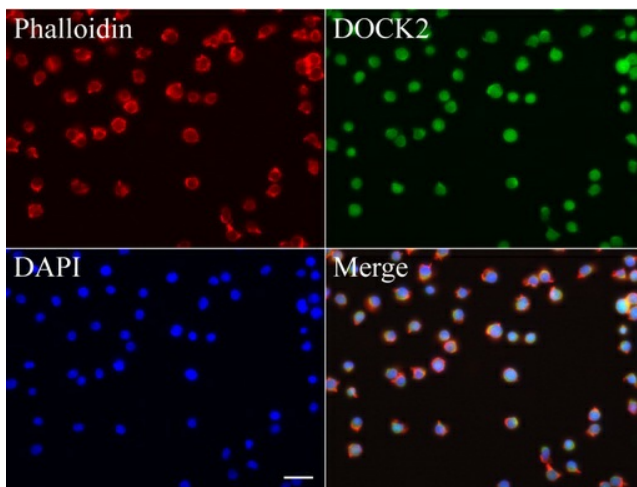
Immunohistochemical staining of paraffin-embedded human tonsil using anti-DOCK2 clone UMAB142 mouse monoclonal antibody at 1:200 dilution of 1.0 mg/mL using Polink2 Broad HRP DAB for detection. [UM800039] requires HIER with with citrate pH6.0 at 110°C for 3min using pressure chamber/cooker. IHC staining shows germinal and nongerminal center with strong stain in the cytoplasm and membrane.



Western blot analysis of Jurkat cell lysate (35ug) by using anti-DOCK2 monoclonal antibody.



Western blot analysis of RPMI8226 cell lysate (35ug) by using anti-DOCK2 monoclonal antibody.



Immunofluorescent staining of Jurkat cells using anti-DOCK2 mouse monoclonal antibody ([UM800039], green, 1:100). Actin filaments were labeled with Alexa Fluor® 594 Phalloidin (red), and nuclear with DAPI (blue). Scale bar, 20µm.