

## Product datasheet for **UM870024**

### **NM23A (NME1) Mouse Monoclonal Antibody [Clone ID: UMAB93]**

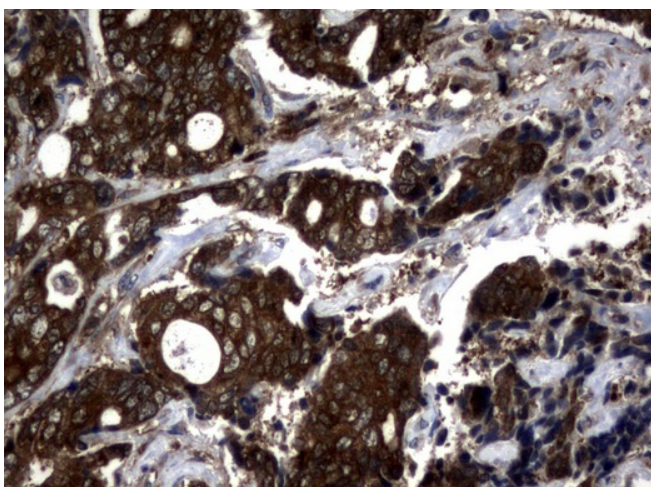
#### **Product data:**

Product Type:	Primary Antibodies
Clone Name:	UMAB93
Applications:	10k-ChIP, IF, IHC, WB
Recommended Dilution:	IHC 1:100, IF 1:100
Reactivity:	Human, Rat, Dog, Mouse
Host:	Mouse
Isotype:	IgG1
Clonality:	Monoclonal
Immunogen:	Full length human recombinant protein of human NME1 (NP_937818) produced in E.coli.
Formulation:	PBS (pH 7.3) containing 1% BSA, 50% glycerol and 0.02% sodium azide.
Concentration:	0.5~1.0 mg/ml (Lot Dependent)
Purification:	Purified from mouse ascites fluids or tissue culture supernatant by affinity chromatography (protein A/G)
Conjugation:	Unconjugated
Storage:	Store at -20°C as received.
Stability:	Stable for 12 months from date of receipt.
Predicted Protein Size:	19.5 kDa
Gene Name:	NME/NM23 nucleoside diphosphate kinase 1
Database Link:	<a href="#">NP_937818</a> <a href="#">Entrez Gene 18102 Mouse</a> <a href="#">Entrez Gene 191575 Rat</a> <a href="#">Entrez Gene 4830 Human</a> <a href="#">P15531</a>

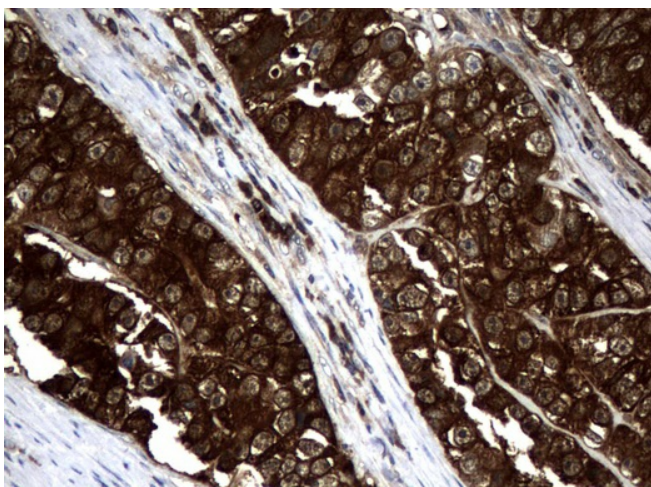


[View online »](#)

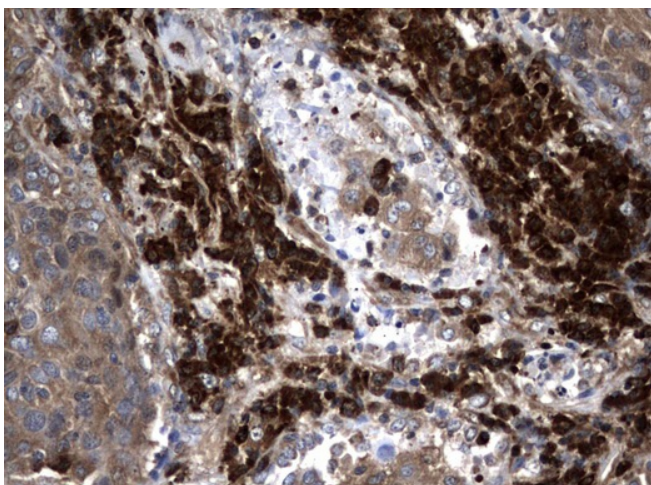
- Background:** This gene (NME1) was identified because of its reduced mRNA transcript levels in highly metastatic cells. Nucleoside diphosphate kinase (NDK) exists as a hexamer composed of 'A' (encoded by this gene) and 'B' (encoded by NME2) isoforms. Mutations in this gene have been identified in aggressive neuroblastomas. Two transcript variants encoding different isoforms have been found for this gene. Co-transcription of this gene and the neighboring downstream gene (NME2) generates naturally-occurring transcripts (NME1-NME2), which encodes a fusion protein comprised of sequence sharing identity with each individual gene product. [provided by RefSeq, Jul 2008]
- Synonyms:** AWD; GAAD; NB; NBS; NDKA; NDPK-A; NDPKA; NM23; NM23-H1
- Protein Families:** Druggable Genome, Stem cell - Pluripotency
- Protein Pathways:** Metabolic pathways, Purine metabolism, Pyrimidine metabolism

**Product images:**

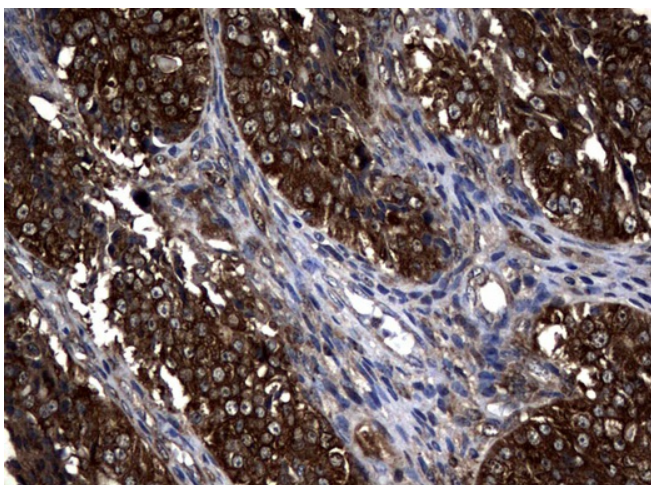
Immunohistochemical staining of paraffin-embedded Adenocarcinoma of Human breast tissue using anti-NME1 mouse monoclonal antibody. ([UM800024]; heat-induced epitope retrieval by 10mM citric buffer, pH6.0, 120°C for 3min)



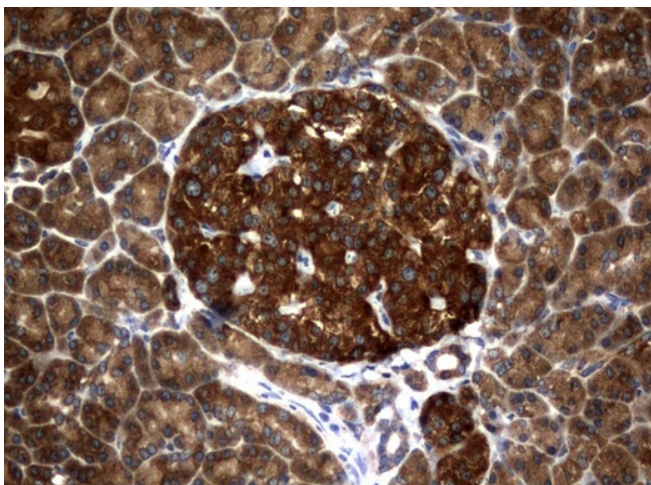
Immunohistochemical staining of paraffin-embedded Adenocarcinoma of Human colon tissue using anti-NME1 mouse monoclonal antibody. ([UM800024]; heat-induced epitope retrieval by 10mM citric buffer, pH6.0, 120°C for 3min)



Immunohistochemical staining of paraffin-embedded Carcinoma of Human lung tissue using anti-NME1 mouse monoclonal antibody. ([UM800024]; heat-induced epitope retrieval by 10mM citric buffer, pH6.0, 120°C for 3min)

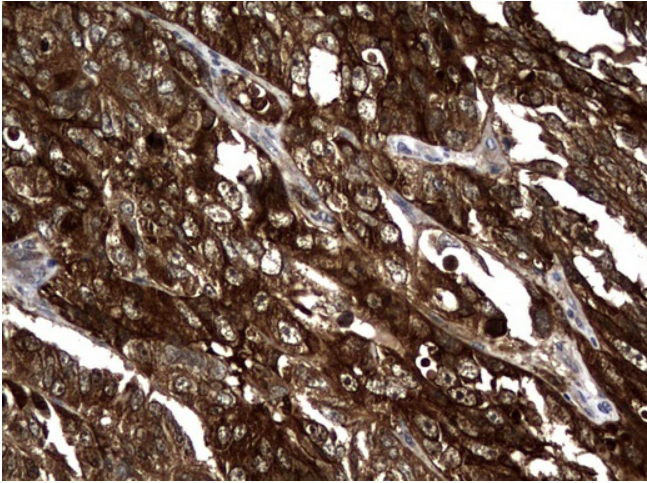


Immunohistochemical staining of paraffin-embedded Adenocarcinoma of Human ovary tissue using anti-NME1 mouse monoclonal antibody. ([UM800024]; heat-induced epitope retrieval by 10mM citric buffer, pH6.0, 120°C for 3min)

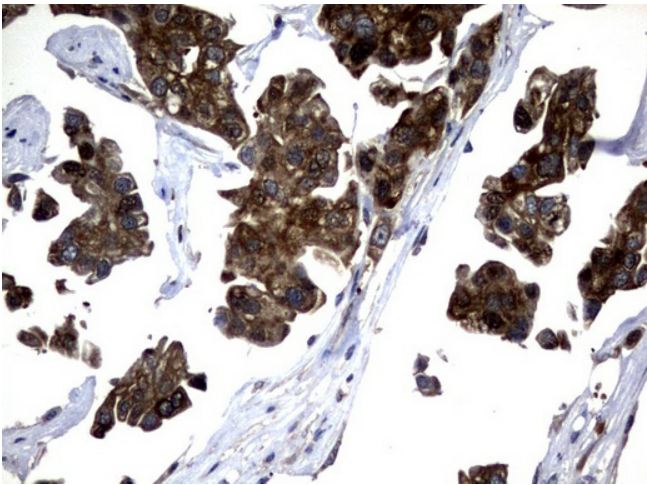


Immunohistochemical staining of paraffin-embedded Human pancreas tissue using anti-NME1 mouse monoclonal antibody. ([UM800024]; heat-induced epitope retrieval by 10mM citric buffer, pH6.0, 120°C for 3min)

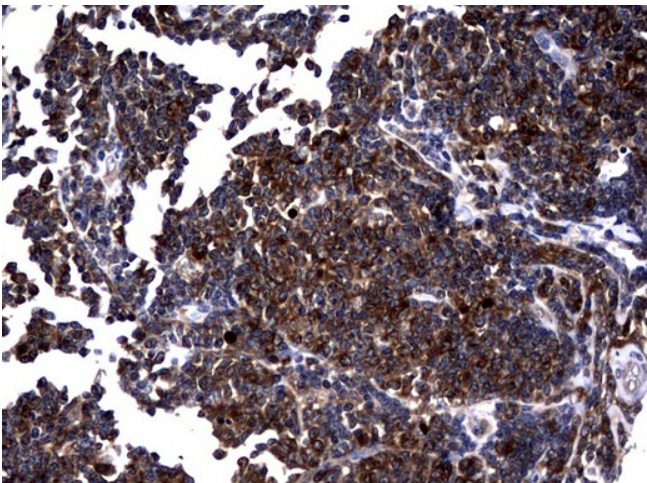




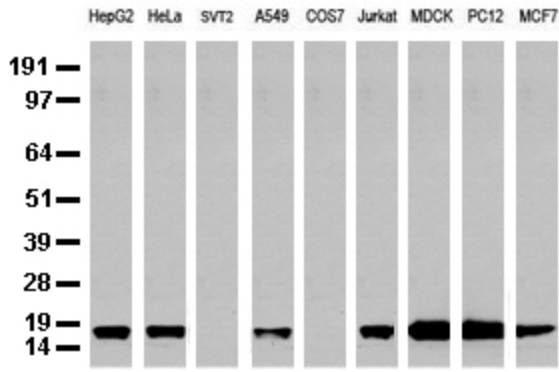
Immunohistochemical staining of paraffin-embedded Adenocarcinoma of Human endometrium tissue using anti-NME1 mouse monoclonal antibody. ([UM800024]; heat-induced epitope retrieval by 10mM citric buffer, pH6.0, 120°C for 3min)



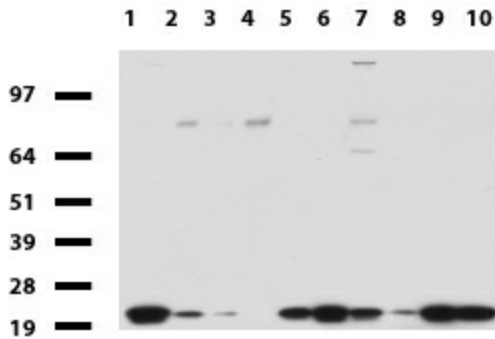
Immunohistochemical staining of paraffin-embedded Carcinoma of Human bladder tissue using anti-NME1 mouse monoclonal antibody. ([UM800024]; heat-induced epitope retrieval by 10mM citric buffer, pH6.0, 120°C for 3min)



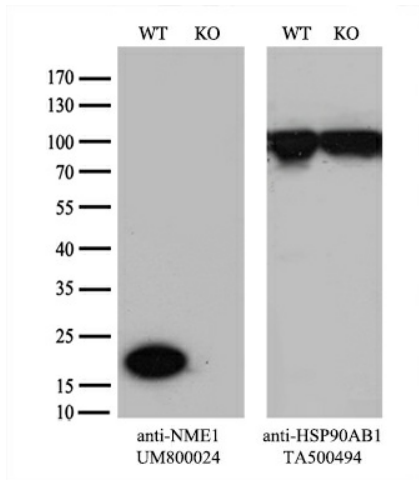
Immunohistochemical staining of paraffin-embedded Human lymphoma tissue using anti-NME1 mouse monoclonal antibody. ([UM800024]; heat-induced epitope retrieval by 10mM citric buffer, pH6.0, 120°C for 3min)



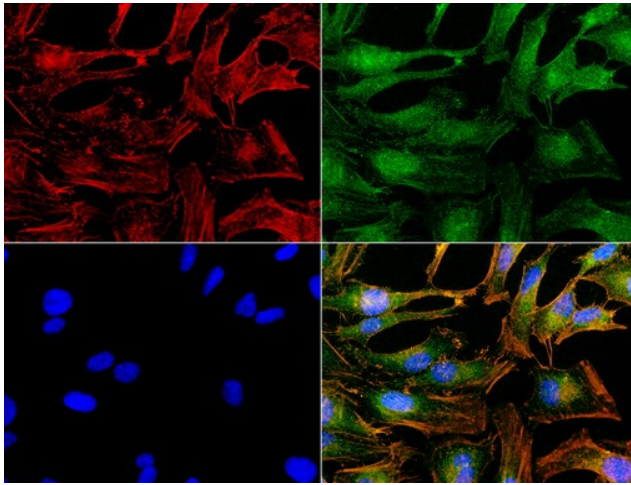
Western blot analysis of extracts (35ug) from 9 different cell lines by using anti-NME1 monoclonal antibody (Clone UMAB93).



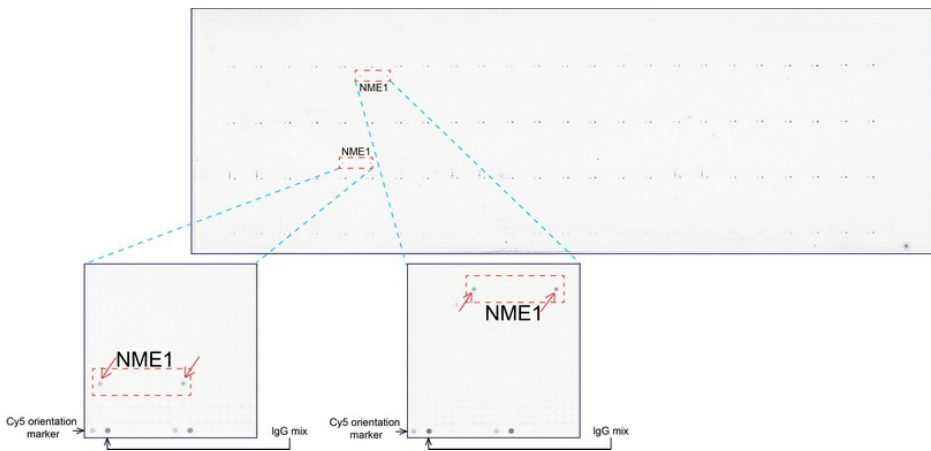
Western blot of human tissue lysates (15ug) from 10 different tissues (1: Testis, 2: Omentum, 3: Uterus, 4: Breast, 5: Brain, 6: Liver, 7: Ovary, 8: Thyroid, 9: Colon, 10: Spleen ). Dilution: 1:500.



Equivalent amounts of cell lysates (10 ug per lane) of wild-type 293T cells (WT, Cat# LC810293T) and NME1-Knockout 293T cells (KO, Cat# LC840085) were separated by SDS-PAGE and immunoblotted with anti-NME1 monoclonal antibody [UM800024] (1:500). Then the blotted membrane was stripped and reprobed with anti-HSP90 antibody as a loading control.



Immunofluorescent staining of HeLa cells using NME1 mouse monoclonal antibody ([UM800024], green). Actin filaments were labeled with TRITC-phalloidin (red), and nuclear with DAPI (blue). The three-color overlay image is located at the bottom-right corner.



OriGene overexpression protein microarray chip was immunostained with UltraMAB anti-NME1 mouse monoclonal antibody ([UM800024]). The positive reactive proteins are highlighted with two red arrows in the enlarged subarray. All the positive controls spotted in this subarray are also labeled for clarification.