

Product datasheet for **UM870020**

FOXP1 Mouse Monoclonal Antibody [Clone ID: UMAB89]

Product data:

Product Type:	Primary Antibodies
Clone Name:	UMAB89
Applications:	10k-ChIP, IHC, WB
Recommended Dilution:	IHC 1:100, IF 1:100
Reactivity:	Human, Mouse, Rat, Monkey
Host:	Mouse
Isotype:	IgG1
Clonality:	Monoclonal
Immunogen:	Full length human recombinant protein of human FOXP1 (NP_116071) produced in SF9 cell.
Formulation:	PBS (pH 7.3) containing 1% BSA, 50% glycerol and 0.02% sodium azide.
Concentration:	0.5~1.0 mg/ml (Lot Dependent)
Purification:	Purified from mouse ascites fluids or tissue culture supernatant by affinity chromatography (protein A/G)
Conjugation:	Unconjugated
Storage:	Store at -20°C as received.
Stability:	Stable for 12 months from date of receipt.
Predicted Protein Size:	75.1 kDa
Gene Name:	forkhead box P1
Database Link:	NP_116071 Entrez Gene 108655 Mouse Entrez Gene 297480 Rat Entrez Gene 27086 Human Q9H334
Background:	This gene belongs to subfamily P of the forkhead box (FOX) transcription factor family. Forkhead box transcription factors play important roles in the regulation of tissue- and cell type-specific gene transcription during both development and adulthood. Forkhead box P1 protein contains both DNA-binding- and protein-protein binding-domains. This gene may act as a tumor suppressor as it is lost in several tumor types and maps to a chromosomal region (3p14.1) reported to contain a tumor suppressor gene(s). Alternative splicing results in multiple transcript variants encoding different isoforms. [provided by RefSeq, Jul

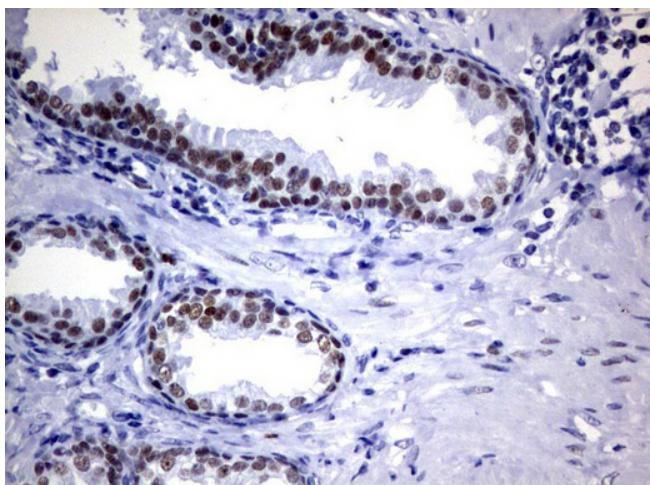


[View online »](#)

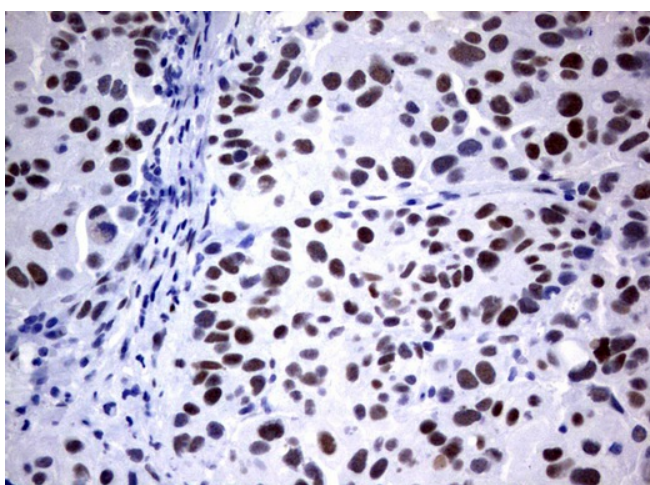
Synonyms: 12CC4; hFKH1B; HSPC215; MFH; QRF1

Protein Families: Transcription Factors

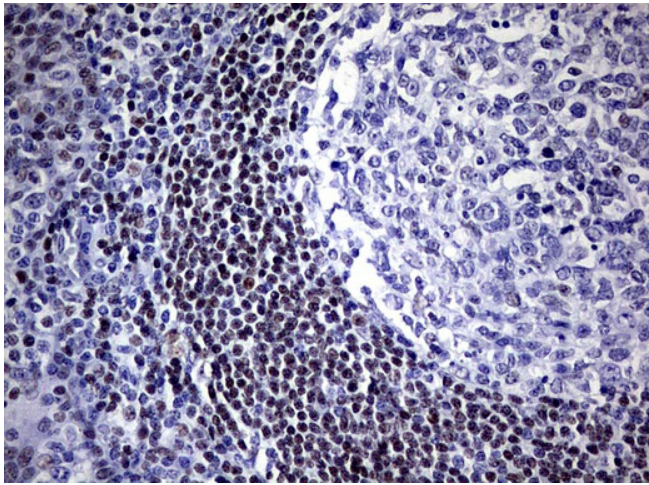
Product images:



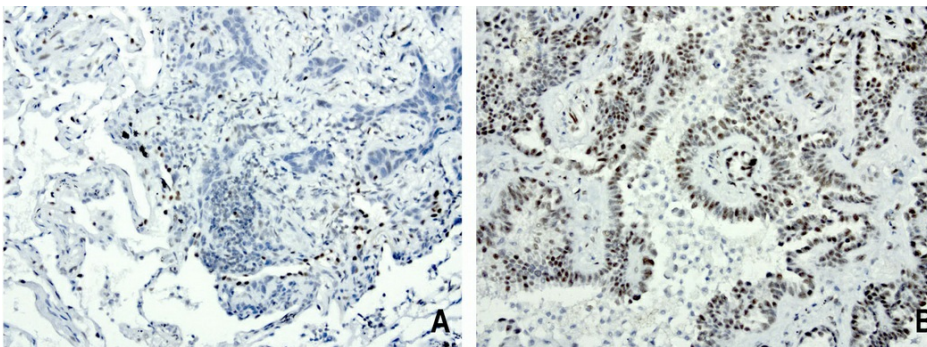
Immunohistochemical staining of paraffin-embedded Human prostate tissue using anti-FOXP1 mouse monoclonal antibody. ([UM800020]; heat-induced epitope retrieval by 1mM EDTA in 10mM Tris, pH8.0, 120°C for 3min)



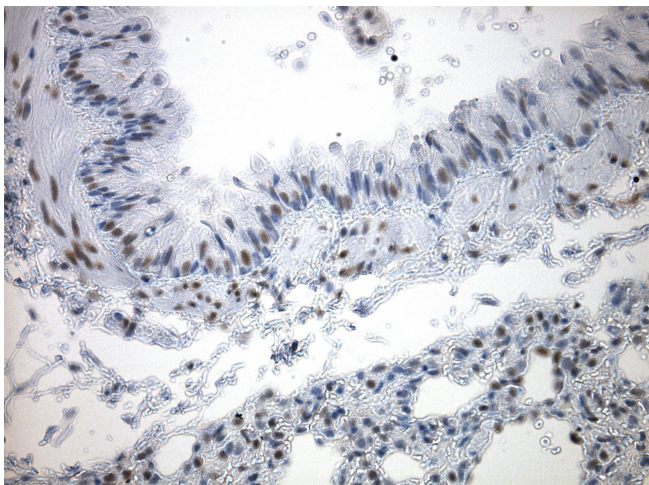
Immunohistochemical staining of paraffin-embedded Carcinoma of Human bladder tissue using anti-FOXP1 mouse monoclonal antibody. ([UM800020]; heat-induced epitope retrieval by 1mM EDTA in 10mM Tris, pH8.0, 120°C for 3min)



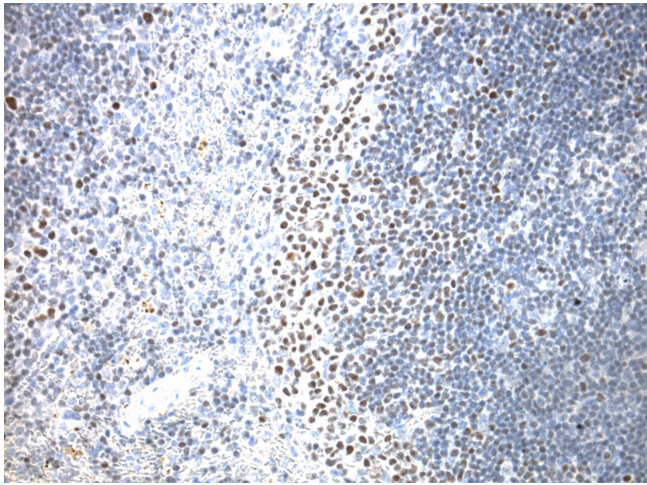
Immunohistochemical staining of paraffin-embedded Human tonsil using anti-FOXP1 mouse monoclonal antibody. ([UM800020]; heat-induced epitope retrieval by 1mM EDTA in 10mM Tris, pH8.0, 120°C for 3min)



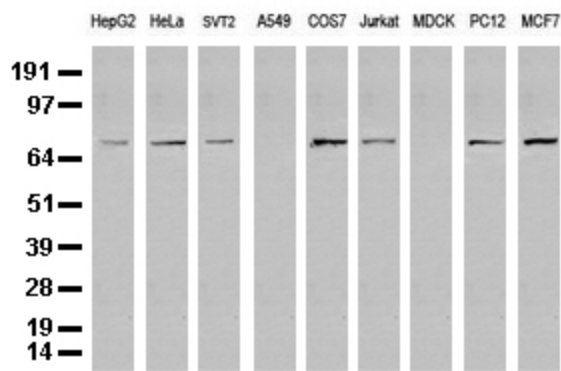
Immunohistochemical staining of paraffin-embedded human lung cancer using anti-FOXP1 clone UMAB89 mouse monoclonal antibody at 1:200 dilution of 1.0 mg/mL using Polink2 Broad HRP DAB for detection. [UM800020] requires HIER with with citrate pH6.0 at 110°C for 3min using pressure chamber/cooker. The panel A shows negative tumor cells of lung carcinoma and panel B strong nuclear staining in the tumor cells.



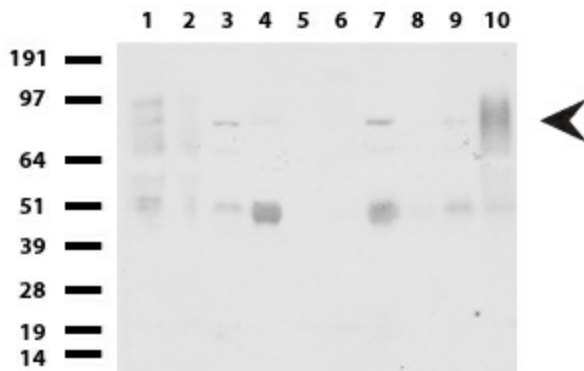
Immunohistochemical staining of paraffin-embedded mouse lung tissue using anti-FOXP1 clone UMAB89 mouse monoclonal antibody. HIER ACCEL buffer ([B22C-125]) (pH8.7) at 110C for 10 min, [UM800020] (1:100). Detection was done with Klear Mouse (C/N [D52-18]) DAB Kit.



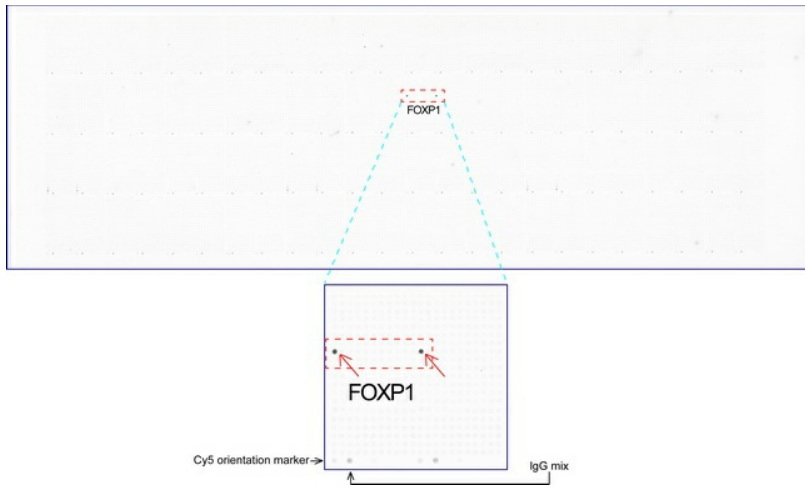
Immunohistochemical staining of paraffin-embedded mouse spleen tissue using anti-FOXP1 clone UMAB89 mouse monoclonal antibody. HIER ACCEL buffer ([B22C-125]) (pH8.7) at 110C for 10 min, [UM800020] (1:100). Detection was done with Klear Mouse (C/N [D52-18]) DAB Kit.



Western blot analysis of extracts (35ug) from 9 different cell lines by using anti-FOXP1 monoclonal antibody (Clone UMAB89).



Western blot of human tissue lysates (15ug) from 10 different tissues (1: Testis, 2: Omentum, 3: Uterus, 4: Breast, 5: Brain, 6: Liver, 7: Ovary, 8: Thyroid, 9: Colon, 10: Spleen). Dilution: 1:500.



OriGene overexpression protein microarray chip was immunostained with UltraMAB anti-FOXP1 mouse monoclonal antibody ([UM800020]). The positive reactive proteins are highlighted with two red arrows in the enlarged subarray. All the positive controls spotted in this subarray are also labeled for clarification.