

Product datasheet for **UM870019**

HE4 (WFDC2) Mouse Monoclonal Antibody [Clone ID: UMAB88]

Product data:

Product Type:	Primary Antibodies
Clone Name:	UMAB88
Applications:	10k-ChIP, IHC, WB
Recommended Dilution:	IHC 1:100
Reactivity:	Human
Host:	Mouse
Isotype:	IgG1
Clonality:	Monoclonal
Immunogen:	Human recombinant protein fragment corresponding to amino acids 31-124 of human WFDC2 (NP_006094) produced in E.coli.
Formulation:	PBS (pH 7.3) containing 1% BSA, 50% glycerol and 0.02% sodium azide.
Concentration:	0.5~1.0 mg/ml (Lot Dependent)
Purification:	Purified from mouse ascites fluids or tissue culture supernatant by affinity chromatography (protein A/G)
Conjugation:	Unconjugated
Storage:	Store at -20°C as received.
Stability:	Stable for 12 months from date of receipt.
Predicted Protein Size:	10 kDa
Gene Name:	WAP four-disulfide core domain 2
Database Link:	NP_006094 Entrez Gene 10406 Human Q14508
Background:	This gene encodes a protein that is a member of the WFDC domain family. The WFDC domain, or WAP Signature motif, contains eight cysteines forming four disulfide bonds at the core of the protein, and functions as a protease inhibitor in many family members. This gene is expressed in pulmonary epithelial cells, and was also found to be expressed in some ovarian cancers. The encoded protein is a small secretory protein, which may be involved in sperm maturation. [provided by RefSeq, Jul 2008]

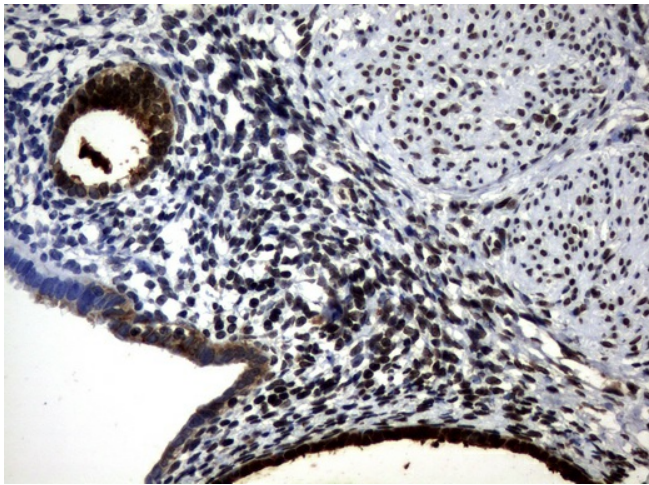


[View online »](#)

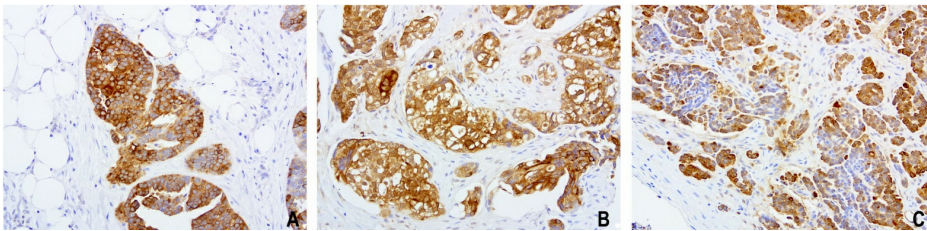
Synonyms: dj461P17.6; EDDM4; HE4; WAP5

Protein Families: Secreted Protein, Transmembrane

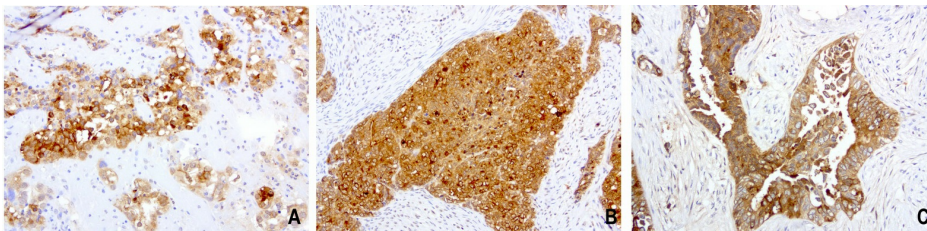
Product images:



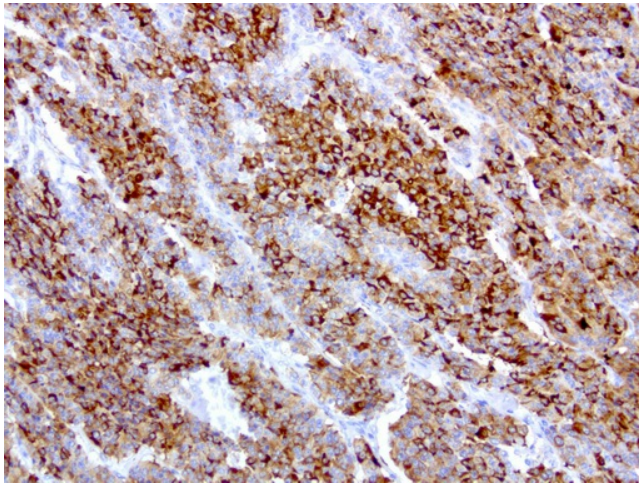
Immunohistochemical staining of paraffin-embedded Human endometrium tissue using anti-WFDC2 mouse monoclonal antibody. ([UM800019]; heat-induced epitope retrieval by 10mM citric buffer, pH6.0, 120°C for 3min)



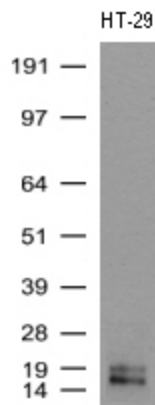
Immunohistochemical staining of paraffin-embedded 3 human ovarian cancer using anti-HE4 clone UMAB88 mouse monoclonal antibody at 1:200 dilution of 1.0 mg/mL using Polink2 Broad HRP DAB for detection. [UM800018] requires HIER with with citrate pH6.0 at 110°C for 3min using pressure chamber/cooker. The tumor cells show membrane and cytoplasmic staining.



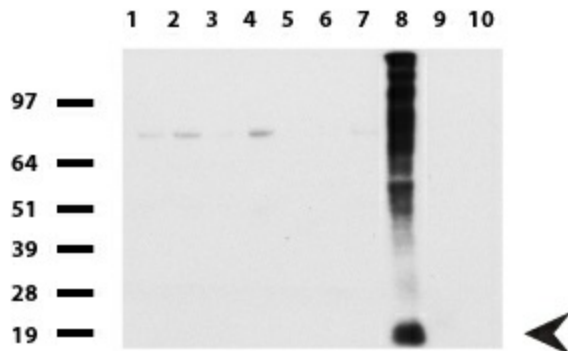
Immunohistochemical staining of paraffin-embedded 3 human endometrial cancer using anti-HE4 clone UMAB88 mouse monoclonal antibody at 1:200 dilution of 1.0 mg/mL using Polink2 Broad HRP DAB for detection. [UM800018] requires HIER with with citrate pH6.0 at 110°C for 3min using pressure chamber/cooker. The tumor cells show membrane and cytoplasmic staining.



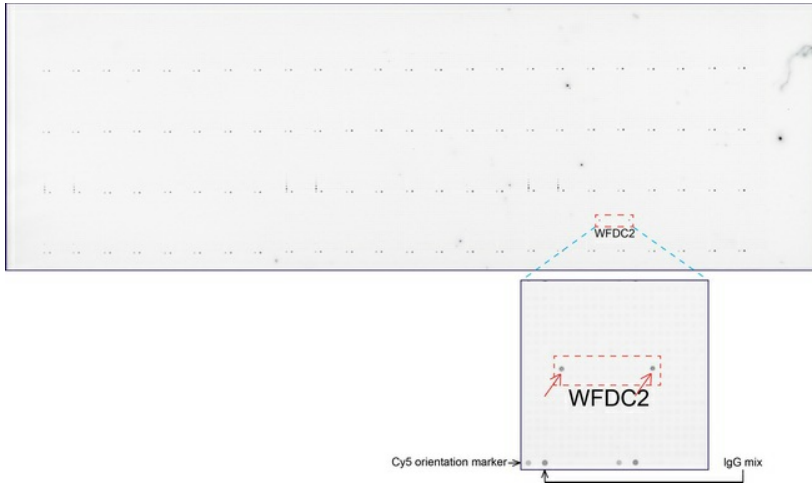
Immunohistochemical staining of paraffin-embedded human lung cancer using anti-HE4 clone UMAB88 mouse monoclonal antibody at 1:200 dilution of 1.0 mg/mL using Polink2 Broad HRP DAB for detection. [UM800018] requires HIER with with citrate pH6.0 at 110°C for 3min using pressure chamber/cooker. The tumor cells show membrane and cytoplasmic staining.



Western Blot analysis of HT-29 cell lysate (35ug) by using anti-WFDC2 monoclonal antibody (Clone UMAB88)



Western blot of human tissue lysates (15ug) from 10 different tissues (1: Testis, 2: Omentum, 3: Uterus, 4: Breast, 5: Brain, 6: Liver, 7: Ovary, 8: Thyroid, 9: Colon, 10: Spleen). Dilution: 1:1000.



OriGene overexpression protein microarray chip was immunostained with UltraMAB anti-WFDC2 mouse monoclonal antibody ([UM800019]). The positive reactive proteins are highlighted with two red arrows in the enlarged subarray. All the positive controls spotted in this subarray are also labeled for clarification.