

Product datasheet for **UM870001**

CD20 (MS4A1) Mouse Monoclonal Antibody [Clone ID: UMAB37]

Product data:

| | |
|-------------------------|---|
| Product Type: | Primary Antibodies |
| Clone Name: | UMAB37 |
| Applications: | IHC |
| Recommended Dilution: | WB 1:2000, IHC 1:150 |
| Reactivity: | Human |
| Host: | Mouse |
| Isotype: | IgG1 |
| Clonality: | Monoclonal |
| Immunogen: | Full length human recombinant protein of human MS4A1 (NP_068769) produced in HEK293T cell. |
| Formulation: | PBS (pH 7.3) containing 1% BSA, 50% glycerol and 0.02% sodium azide. |
| Concentration: | 0.5~1.0 mg/ml (Lot Dependent) |
| Purification: | Purified from mouse ascites fluids or tissue culture supernatant by affinity chromatography (protein A/G) |
| Conjugation: | Unconjugated |
| Storage: | Store at -20°C as received. |
| Stability: | Stable for 12 months from date of receipt. |
| Predicted Protein Size: | 32.9 kDa |
| Gene Name: | membrane spanning 4-domains A1 |
| Database Link: | NP_068769 Entrez Gene 931 Human P11836 |



[View online »](#)

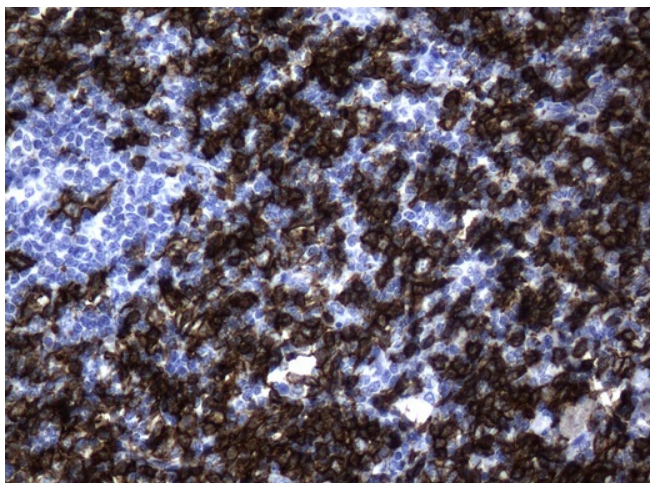
Background: This gene encodes a member of the membrane-spanning 4A gene family. Members of this nascent protein family are characterized by common structural features and similar intron/exon splice boundaries and display unique expression patterns among hematopoietic cells and nonlymphoid tissues. This gene encodes a B-lymphocyte surface molecule which plays a role in the development and differentiation of B-cells into plasma cells. This family member is localized to 11q12, among a cluster of family members. Alternative splicing of this gene results in two transcript variants which encode the same protein. [provided by RefSeq]

Synonyms: B1; Bp35; CD20; CVID5; FMC7; LEU-16; MS4A2; S7

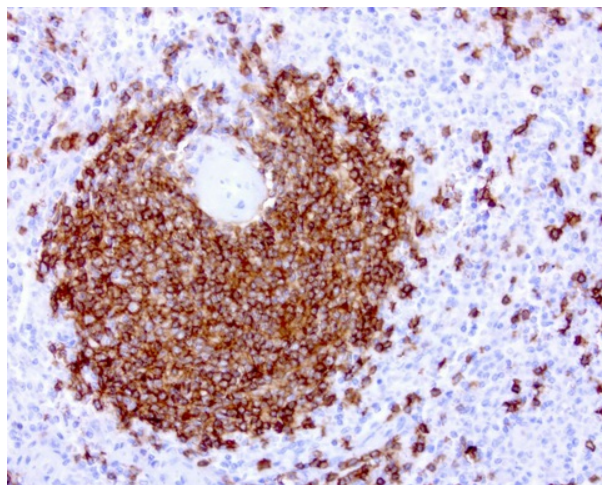
Protein Families: Druggable Genome, Transmembrane

Protein Pathways: Hematopoietic cell lineage

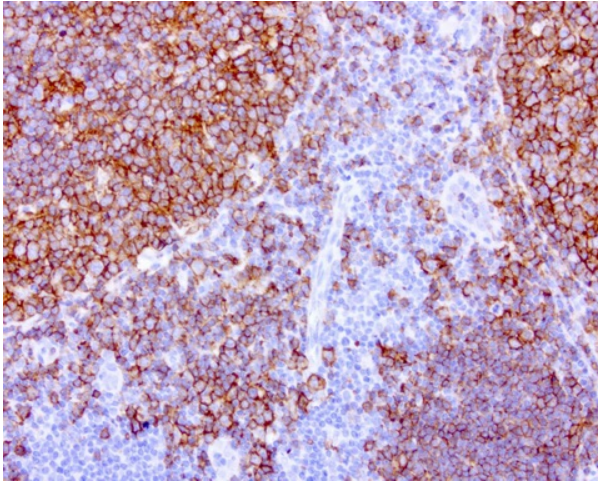
Product images:



Immunohistochemical staining of paraffin-embedded lymph node tissue using anti-CD20 mouse monoclonal antibody. (Clone UMAB37, Dilution 1:100; heat-induced epitope retrieval by 10mM citric buffer, pH6.0, 120°C for 3min)



Immunohistochemical staining of paraffin-embedded human spleen using anti-CD20 mouse monoclonal antibody at 1:200 dilution of 1.0 mg/mL using Polink2 Broad HRP DAB for detection. [UM800001] requires HIER with with citrate pH6.0 at 110°C for 3min using pressure chamber/cooker. The spleen shows strong membrane and cytoplasmic staining in red and white pulp cells.



Immunohistochemical staining of paraffin-embedded human tonsil using anti-CD20 mouse monoclonal antibody at 1:200 dilution of 1.0 mg/mL using Polink2 Broad HRP DAB for detection. [UM800001] requires HIER with with citrate pH6.0 at 110°C for 3min using pressure chamber/cooker. The tonsil shows strong membrane and cytoplasmic staining in the germinal center of the tonsil and some positive cells in the non-germinal center.