

Product datasheet for **UM800188**

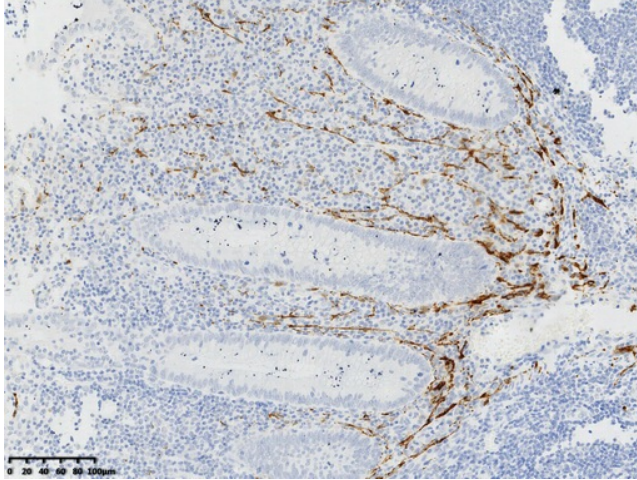
Calretinin (CALB2) Mouse Monoclonal Antibody [Clone ID: UMAB306]

Product data:

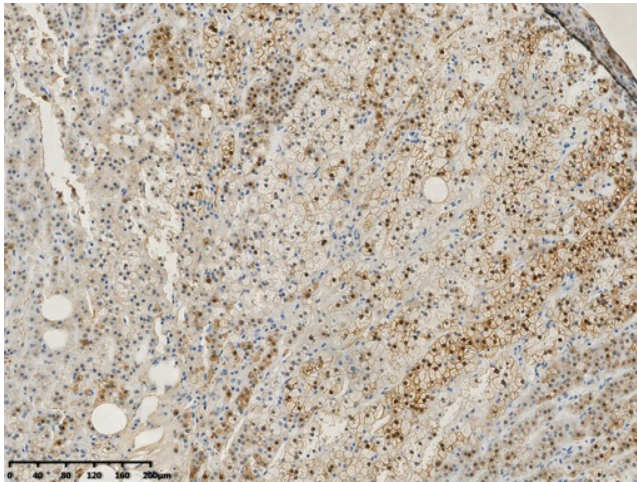
Product Type:	Primary Antibodies
Clone Name:	UMAB306
Applications:	IHC
Recommended Dilution:	IHC 1:500
Reactivity:	Human
Host:	Mouse
Isotype:	IgG1
Clonality:	Monoclonal
Immunogen:	Full length human recombinant protein of human Calretinin(CALB2) (NP_001731) produced in E.coli.
Formulation:	PBS (pH 7.3) containing 1% BSA, 50% glycerol and 0.02% sodium azide.
Concentration:	1.00mg/ml
Purification:	Purified from mouse ascites fluids or tissue culture supernatant by affinity chromatography (protein A/G)
Conjugation:	Unconjugated
Predicted Protein Size:	31.6 kDa
Gene Name:	calbindin 2
Database Link:	NP_001731 Entrez Gene 794 Human P22676
Background:	This gene encodes an intracellular calcium-binding protein belonging to the troponin C superfamily. Members of this protein family have six EF-hand domains which bind calcium. This protein plays a role in diverse cellular functions, including message targeting and intracellular calcium buffering. It also functions as a modulator of neuronal excitability, and is a diagnostic marker for some human diseases, including Hirschsprung disease and some cancers. Alternative splicing results in multiple transcript variants. [provided by RefSeq, Jun 2010]
Synonyms:	CAB29; CAL2; CR



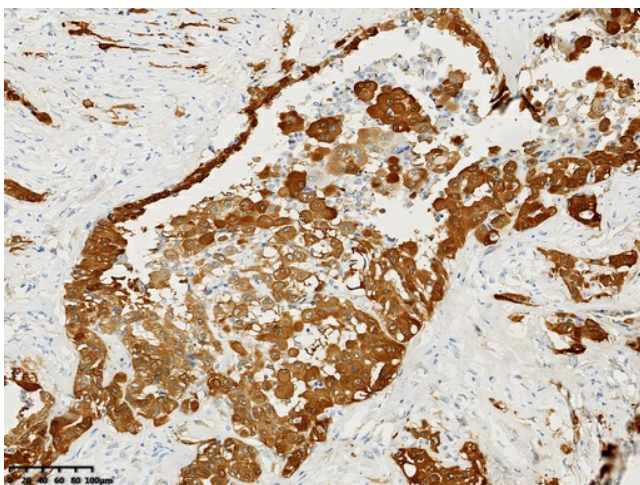
[View online »](#)

Product images:

IHC staining of FFPE human appendix tissue with in the normal limits using anti-Calretinin(CALB2) mouse monoclonal antibody (UM800188) and Polink-2 HRP polymer detection kit ([D22-110]). Heat-induced epitope retrieval by EDTA solution buffer pH 8.0 ([B04C-100]) at 120°C for 3 min. The brown stain indicates positive stain, blue is the counter stain.



IHC staining of FFPE human adrenal gland tissue with in the normal limits using anti-Calretinin(CALB2) mouse monoclonal antibody (UM800188) and Polink-2 HRP polymer detection kit ([D22-110]). Heat-induced epitope retrieval by EDTA solution buffer pH 8.0 ([B04C-100]) at 120°C for 3 min. The brown stain indicates positive stain, blue is the counter stain.



IHC staining of FFPE human mesothelioma tissue using anti-Calretinin(CALB2) mouse monoclonal antibody (UM800188) and Polink-2 HRP polymer detection kit ([D22-110]). Heat-induced epitope retrieval by EDTA solution buffer pH 8.0 ([B04C-100]) at 120°C for 3 min. The brown stain indicates positive stain, blue is the counter stain.