

Product datasheet for **UM800186CF**

Inhibin alpha (INHA) Mouse Monoclonal Antibody [Clone ID: UMAB304]

Product data:

Product Type:	Primary Antibodies
Clone Name:	UMAB304
Applications:	IHC
Recommended Dilution:	IHC 1:12000
Reactivity:	Human
Host:	Mouse
Isotype:	IgG2a
Clonality:	Monoclonal
Immunogen:	Human recombinant protein fragment of human INHA (NP_002182) produced in E.coli.
Formulation:	Lyophilized powder (original buffer 1X PBS, pH 7.3, 8% trehalose)
Reconstitution Method:	For reconstitution, we recommend adding 100uL distilled water to a final antibody concentration of about 1 mg/mL. To use this carrier-free antibody for conjugation experiment, we strongly recommend performing another round of desalting process. (OriGene recommends Zeba Spin Desalting Columns, 7KMWCO from Thermo Scientific)
Concentration:	1mg/ml
Purification:	Purified from mouse ascites fluids or tissue culture supernatant by affinity chromatography (protein A/G)
Conjugation:	Unconjugated
Predicted Protein Size:	39.7 kDa
Gene Name:	inhibin subunit alpha
Database Link:	NP_002182 Entrez Gene 3623 Human P05111



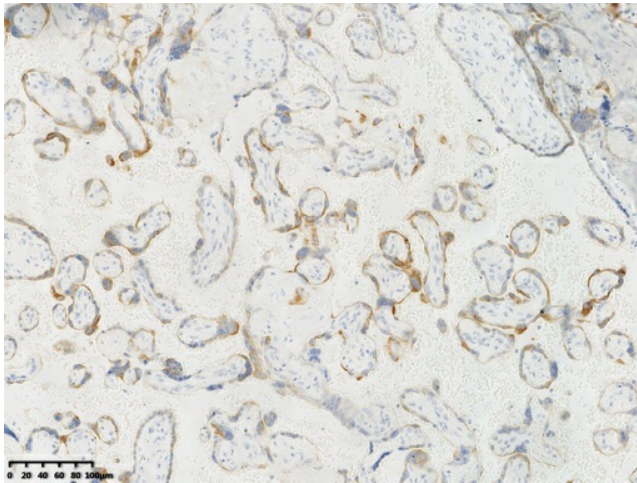
[View online »](#)

Background:

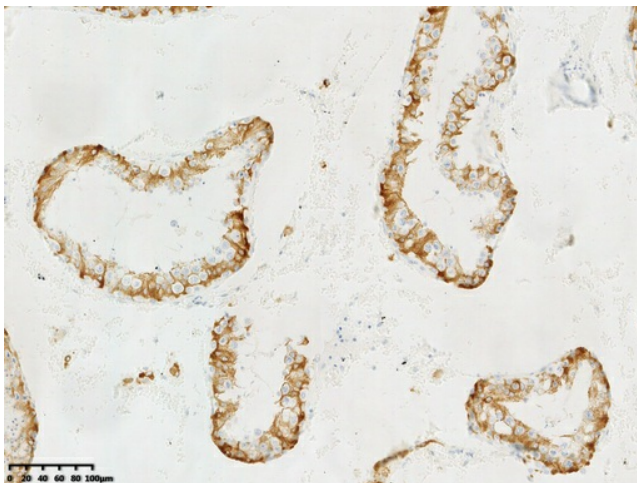
This gene encodes a member of the TGF-beta (transforming growth factor-beta) superfamily of proteins. The encoded preproprotein is proteolytically processed to generate multiple peptide products, including the alpha subunit of the inhibin A and B protein complexes. These complexes negatively regulate follicle stimulating hormone secretion from the pituitary gland. Inhibins have also been implicated in regulating numerous cellular processes including cell proliferation, apoptosis, immune response and hormone secretion. Mutations in this gene may be associated with male infertility and premature ovarian failure in female human patients. [provided by RefSeq, Aug 2016]

Protein Families:

Druggable Genome, Secreted Protein

Product images:

IHC staining of FFPE human placenta tissue with in the normal limits using anti-INHA mouse monoclonal antibody ([UM800186]) and Polink-2 HRP polymer detection kit ([D22-110]). Heat-induced epitope retrieval by EDTA solution buffer pH 9.0 ([B06C-50]) at 120°C for 3 min. The brown stain indicates positive stain, blue is the counter stain.



IHC staining of FFPE human testis tissue with in the normal limits using anti-INHA mouse monoclonal antibody ([UM800186]) and Polink-2 HRP polymer detection kit ([D22-110]). Heat-induced epitope retrieval by EDTA solution buffer pH 9.0 ([B06C-50]) at 120°C for 3 min. The brown stain indicates positive stain, blue is the counter stain.