

Product datasheet for **UM800185CF**

Calcitonin (CALCA) Mouse Monoclonal Antibody [Clone ID: UMAB303]

Product data:

Product Type:	Primary Antibodies
Clone Name:	UMAB303
Applications:	IHC
Recommended Dilution:	IHC 1:10000
Reactivity:	Human
Host:	Mouse
Isotype:	IgG1
Clonality:	Monoclonal
Immunogen:	Synthetic peptide (the amino acid sequence is considered to be commercially sensitive) within Human Calcitonin(CALCA) (NP_001732). The exact sequence is proprietary.
Formulation:	Lyophilized powder (original buffer 1X PBS, pH 7.3, 8% trehalose)
Reconstitution Method:	For reconstitution, we recommend adding 100uL distilled water to a final antibody concentration of about 1 mg/mL. To use this carrier-free antibody for conjugation experiment, we strongly recommend performing another round of desalting process. (OriGene recommends Zeba Spin Desalting Columns, 7KMWCO from Thermo Scientific)
Concentration:	1mg/ml
Purification:	Purified from mouse ascites fluids or tissue culture supernatant by affinity chromatography (protein A/G)
Conjugation:	Unconjugated
Predicted Protein Size:	15.5 kDa
Gene Name:	calcitonin related polypeptide alpha
Database Link:	NP_001732 Entrez Gene 796 Human P01258



[View online »](#)

Background:

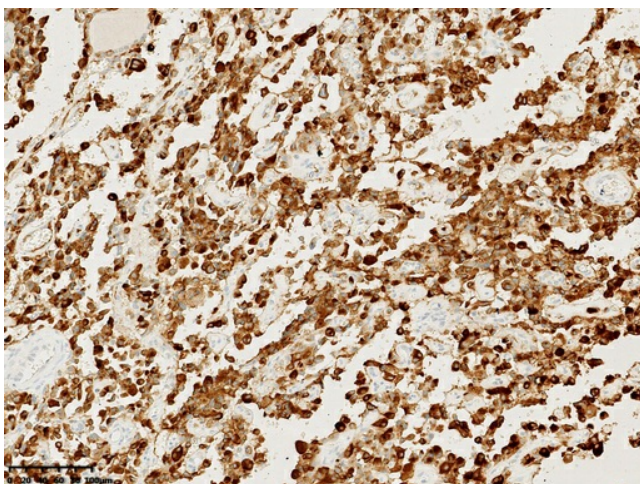
This gene encodes the peptide hormones calcitonin, calcitonin gene-related peptide and katalcacin by tissue-specific alternative RNA splicing of the gene transcripts and cleavage of inactive precursor proteins. Calcitonin is involved in calcium regulation and acts to regulate phosphorus metabolism. Calcitonin gene-related peptide functions as a vasodilator and as an antimicrobial peptide while katalcacin is a calcium-lowering peptide. Multiple transcript variants encoding different isoforms have been found for this gene.[provided by RefSeq, Aug 2014]

Synonyms:

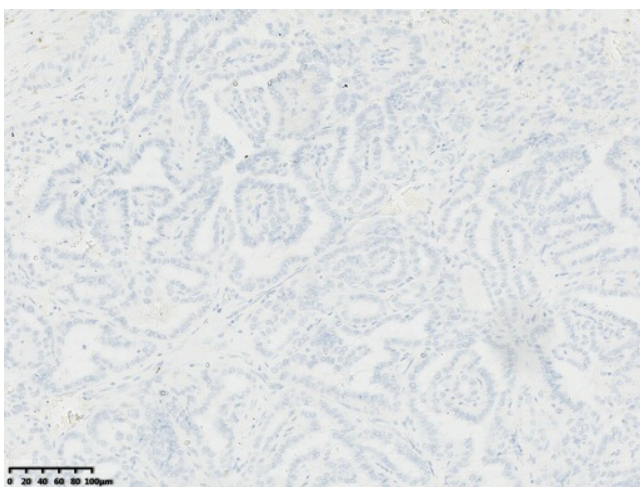
CALC1; CGRP; CGRP-alpha; CGRP-I; CGRP1; CT; KC; PCT

Protein Families:

Druggable Genome, Secreted Protein

Product images:

IHC staining of FFPE human medullary thyroid carcinoma tissue using anti-Calcitonin(CALCA) mouse monoclonal antibody ([UM800185]) and Polink-2 HRP polymer detection kit ([D22-110]). Heat-induced epitope retrieval by EDTA solution buffer pH 8.0 ([B04C-100]) at 120°C for 3 min. The brown stain indicates positive stain, blue is the counter stain.



IHC staining of FFPE human papillary thyroid cancer tissue using anti-Calcitonin(CALCA) mouse monoclonal antibody ([UM800185]) and Polink-2 HRP polymer detection kit ([D22-110]). Heat-induced epitope retrieval by EDTA solution buffer pH 8.0 ([B04C-100]) at 120°C for 3 min. The brown stain indicates positive stain, blue is the counter stain.