

Product datasheet for **UM800178**

Arginase 1 (ARG1) Mouse Monoclonal Antibody [Clone ID: UMAB288]

Product data:

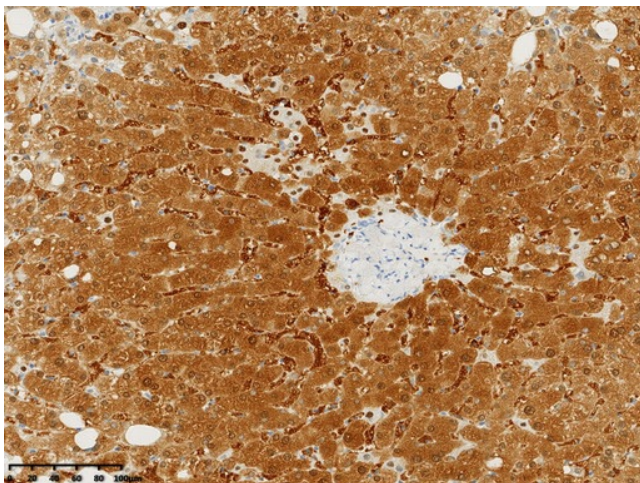
Product Type:	Primary Antibodies
Clone Name:	UMAB288
Applications:	IHC, WB
Recommended Dilution:	WB 1:1000, IHC 1:15000
Reactivity:	Mouse, Rat
Host:	Mouse
Isotype:	IgG2a
Clonality:	Monoclonal
Immunogen:	Full length human recombinant protein of human ARG1 (NP_000036) produced in HEK293T cell.
Formulation:	PBS (pH 7.3) containing 1% BSA, 50% glycerol and 0.02% sodium azide.
Concentration:	1 mg/ml
Purification:	Purified from mouse ascites fluids or tissue culture supernatant by affinity chromatography (protein A/G)
Conjugation:	Unconjugated
Predicted Protein Size:	34.7 kDa
Gene Name:	arginase 1
Database Link:	NP_000036 Entrez Gene 11846 Mouse Entrez Gene 29221 Rat P05089
Background:	Arginase catalyzes the hydrolysis of arginine to ornithine and urea. At least two isoforms of mammalian arginase exist (types I and II) which differ in their tissue distribution, subcellular localization, immunologic crossreactivity and physiologic function. The type I isoform encoded by this gene, is a cytosolic enzyme and expressed predominantly in the liver as a component of the urea cycle. Inherited deficiency of this enzyme results in argininemia, an autosomal recessive disorder characterized by hyperammonemia. Two transcript variants encoding different isoforms have been found for this gene. [provided by RefSeq, Sep 2011].
Protein Families:	Druggable Genome



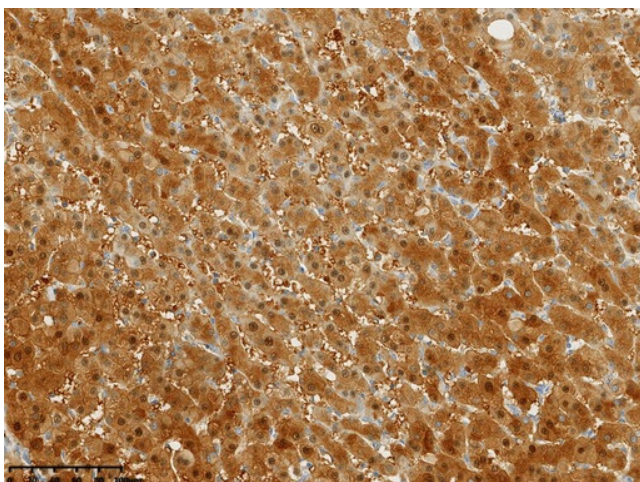
[View online »](#)

Protein Pathways: Arginine and proline metabolism, Metabolic pathways

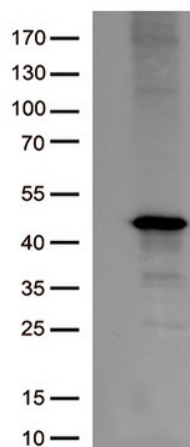
Product images:



Immunohistochemical staining of paraffin-embedded Human liver tissue within the normal limits using anti-Arginase-1 (ARG1) mouse monoclonal antibody. (Heat-induced epitope retrieval by 1mM EDTA in 10mM Tris buffer (pH8.0) at 120°C for 3 min, UM800178) (1:15000)



Immunohistochemical staining of paraffin-embedded Carcinoma of Human liver tissue using anti-Arginase-1(ARG1) mouse monoclonal antibody. (Heat-induced epitope retrieval by 1mM EDTA in 10mM Tris buffer (pH8.0) at 120°C for 3 min, UM800178) (1:15000)



HEK293T cells were transfected with the pCMV6-ENTRY control (Left lane) or pCMV6-ENTRY Arginase-1(ARG1) (Cat# [RC204649], Right lane) cDNA for 48 hrs and lysed. Equivalent amounts of cell lysates (5 ug per lane) were separated by SDS-PAGE and immunoblotted with anti-Arginase-1 (ARG1). (1:1000)