

Product datasheet for **UM800177**

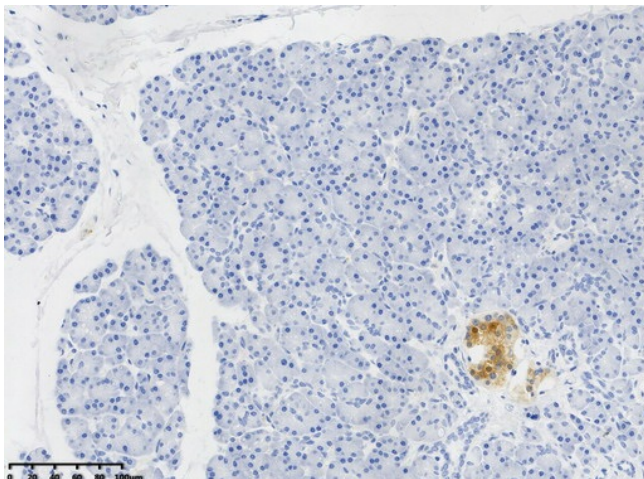
NSE (ENO2) Mouse Monoclonal Antibody [Clone ID: UMAB287]

Product data:

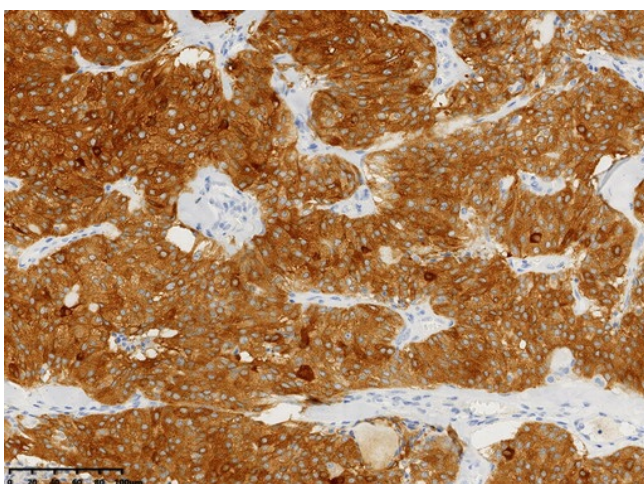
Product Type:	Primary Antibodies
Clone Name:	UMAB287
Applications:	IHC, WB
Recommended Dilution:	WB 1:1000, IHC 1:15000
Reactivity:	Mouse, Rat
Host:	Mouse
Isotype:	IgG2b
Clonality:	Monoclonal
Immunogen:	Human recombinant protein fragment corresponding to amino acids 188-293 of human NSE (NP_001966) produced in E.coli.
Formulation:	PBS (pH 7.3) containing 1% BSA, 50% glycerol and 0.02% sodium azide.
Concentration:	1 mg/ml
Purification:	Purified from mouse ascites fluids or tissue culture supernatant by affinity chromatography (protein A/G)
Conjugation:	Unconjugated
Predicted Protein Size:	47.3 kDa
Gene Name:	enolase 2
Database Link:	NP_001966 Entrez Gene 13807 Mouse Entrez Gene 24334 Rat P09104
Background:	This gene encodes one of the three enolase isoenzymes found in mammals. This isoenzyme, a homodimer, is found in mature neurons and cells of neuronal origin. A switch from alpha enolase to gamma enolase occurs in neural tissue during development in rats and primates. [provided by RefSeq, Jul 2008]
Synonyms:	HEL-S-279; NSE
Protein Pathways:	Glycolysis / Gluconeogenesis, Metabolic pathways, RNA degradation



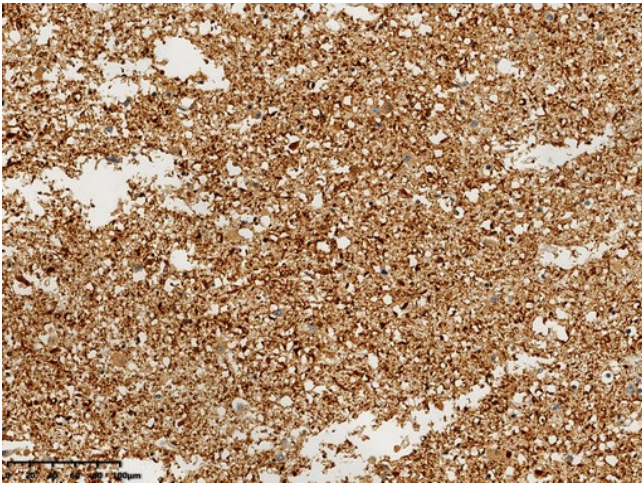
[View online »](#)

Product images:

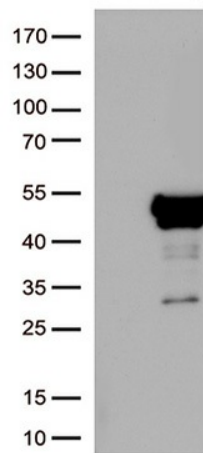
Immunohistochemical staining of paraffin-embedded Human pancreas tissue within the normal limits using anti-NSE (ENO2) mouse monoclonal antibody. (Heat-induced epitope retrieval by 1mM EDTA in 10mM Tris buffer (pH8.0) at 120°C for 3 min, UM800177) (1:15000)



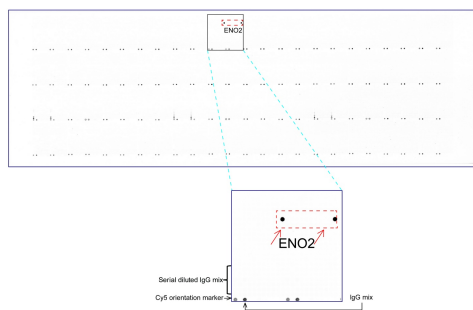
Immunohistochemical staining of paraffin-embedded Carcinoma of Human thyroid tissue using anti-NSE (ENO2) mouse monoclonal antibody. (Heat-induced epitope retrieval by 1mM EDTA in 10mM Tris buffer (pH8.0) at 120°C for 3 min, UM800177) (1:15000)



Immunohistochemical staining of paraffin-embedded Human adult brain tissue within the normal limits using anti-NSE (ENO2) mouse monoclonal antibody. (Heat-induced epitope retrieval by 1mM EDTA in 10mM Tris buffer (pH8.0) at 120 oC for 3 min, UM800177) (1:15000)



HEK293T cells were transfected with the pCMV6-ENTRY control (Cat# [PS100001], Left lane) or pCMV6-ENTRY NSE (ENO2) (Cat# [RC201085], Right lane) cDNA for 48 hrs and lysed. Equivalent amounts of cell lysates (5 ug per lane) were separated by SDS-PAGE and immunoblotted with anti-NSE(ENO2) antibody (Cat# UM800177) (1:1000).



OriGene overexpression protein microarray chip was immunostained with UltraMAB anti-NSE (ENO2) mouse monoclonal antibody (UM800177). The positive reactive proteins are highlighted with two red arrows in the enlarged subarray. All the positive controls spotted in this subarray are also labeled for clarification. (1:100)